

Memorandum



CITY OF DALLAS

DATE January 15, 2010

TO Trinity River Committee Members:

David A. Neumann (Chairman)
Steve Salazar (Vice-Chair)
Mayor Pro Tem Dwaine Caraway
Deputy Mayor Pro Tem Pauline Medrano

Carolyn R. Davis
Vonciel Jones Hill
Delia Jasso
Linda Koop

SUBJECT **Periodic Inspection Report No. 9
Maintenance Deficiency Correction Period (MDCP) December 2009 Update**

As of December 31, 2009, the City has completed 125 of the 198 items in the MDCP plan which is the action plan staff submitted to the US Corps of Engineers (USACE) to address the O&M deficiencies in the levee system as described in the Periodic Inspection Report No. 9. According to the USACE, the O&M repairs of "Unacceptable" items must be completed by April 1, 2010, for the levee system to be eligible for rehabilitation assistance. The USACE approved this City's action plan on June 30, 2009.

Attached are the items completed in December 2009.

If you have additional questions, please let me know.

Jill A. Jordan, P.E.
Assistant City Manager



THE TRINITY
DALLAS

c: Honorable Mayor and Members of the City Council Judge C. Victor Lander
Mary K. Suhm, City Manager Helena Stevens-Thompson, Assistant to the City Manager
Ryan S. Evans, First Assistant City Manager Frank Libro, Director, Public Information Office
A. C. Gonzalez, Assistant City Manager Kelly High, Director, Trinity Watershed Management
Forest E. Turner, Assistant City Manager Rebecca Raser, P.E., Managing Director, Trinity River Corridor
David K. Cook, Chief Financial Officer
Deborah A. Watkins, City Secretary
Thomas P. Perkins, Jr., City Attorney
Craig D. Kinton, City Auditor

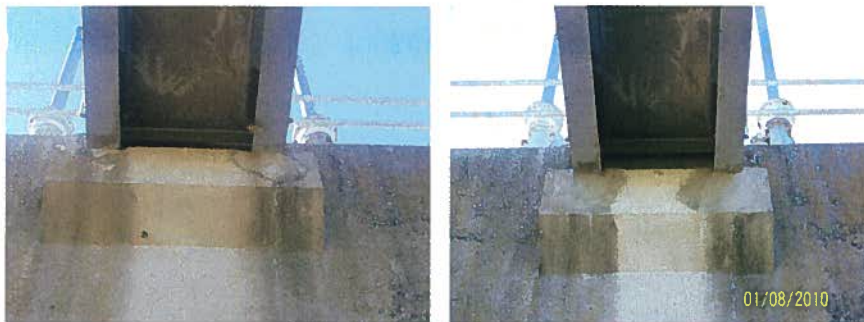
During December 2009, 15 additional “M” & “Obs” items have been addressed. Nine of the addressed items were rated “M” and six were rated “Obs”.

1.1 Five of the addressed items involved concrete repair of spalling, damaged or scouring concrete. The concrete was repaired by chipping away any loose concrete, sealing exposed rebar, then patching the concrete with a cementitious material.

1.1.1 Corps. ID Nos. 042 and 236 – Belleview Pressure Conduit, East Levee – These two “Obs” items referred to the same issue of damage to the concrete around the perimeter of the outlet.



1.1.2 Corps. ID No. 097 – Baker Pump Station, East Levee – This “M” item noted a spall under the bridge support at the control structure.



1.1.3 Corps. ID No. 102 – Charlie Pump Station, West Levee – This “M” item noted scaling concrete on the bridge support corbel under the bridge girders at the control structure.

- 1.1.4 Corps. ID No. 149 – Little Coombs Creek Conduit, West Levee – This “M” item included a failed patch over scour, a second scour area, and a 6” diameter hole in the bottom of the conduit.
- 1.2 Corps. ID No. 183 – Pavaho Pump Station, West Levee – This “M” item noted that the intake right wing wall had a one inch separation from the intake.
The separation was sealed with an expansion joint sealant.
- 1.3 One of the addressed items fell into the category of erosion of slope or slides and was addressed using established levee slide repair procedures.
- 1.3.1 Corps. ID No. 142 – I-35 Northbound Bridge, West Levee – This “M” item notes a group of erosion gullies on the riverside levee slope.
- 1.4 One “M” item was addressed during December 2009 by straightening a trash rack, neutralizing corrosion and painting of metallic parts.
- 1.4.1 Corps. ID No. 169 – Coombs Creek Pressure Diversion, West Levee – Non-mechanical trash rack at inlet was bent and had rust.
- 1.5 Corps. ID No. 003 – System – This “M” item noted that Johnson grass grown was widespread over the entire project. The rapid grown hindered inspection and covered seepage.
Increased mowing cycles have been implemented as part of routine maintenance for the system.
- 1.6 Corps. ID No. 039 – System – This “Obs” item indicates that there is no animal control program for the Dallas Floodway System.
An Animal Damage Control Plan has been prepared and adopted by the City.
- 1.7 After engineering review and/or field investigation, five items were determined to not require any further action by the City.
- 1.7.1 Corps. ID No. 018 – Sta. 175+70, 380+00, 473+90, and 568+70, East Levee – This “M” item noted that these locations had rutting on the levee slopes caused by ATV use.
Rutting was not located during field investigation and ATV use is to be limited in response to Corps. ID No. 056, therefore no action is required for this item.
- 1.7.2 Corps. ID Nos. 023 and 025 – Sta. 320+00, 480+20, 515+75, 520+00, 524+25, 530+75, and 563+40, East Levee – These “M” and “Obs” items respectively call out repaired channel side slides.
As the slides have already been repaired, no action is required. The levees are monitored regularly and slides repaired as necessary.

- 1.7.3 Corps. ID No. 064 – Elm Fork Sluice, East Levee – This “Obs” item noted that erosion had created a 25 foot diameter pond just upstream of the discharge channel.

Upon review, it was noted that the pond had not eroded towards the levee since photos were taken in 2007. This pond is actually the location of the Elm Fork Sluice discharge which is no longer in use. This location should be monitored for future signs of erosion, but no current action is required.

- 1.7.4 Corps. ID No. 203 – CWWTP – This “Obs” item notes that a second flap gate is under water.

The flap gate has been inspected since 2007 during low water and will be inspected as part of routine maintenance.