

# Traffic Grants

Dallas Police Department  
Traffic Section



February 20, 2007

# Funding Source

- ▶ National Highway Traffic Safety Administration (NHTSA)
- ▶ Texas Department of Transportation (TxDOT)

# History

- ▶ Recipient of funding for specific traffic enforcement since 1981 (except 1987).
- ▶ Enforcement targets have changed over the years, but are now combined into the "Comprehensive" Grant.
- ▶ The level of funding to Dallas has varied over the years, but since 2000 the City has received \$11,087,072.

# Comprehensive Grant Enforcement Targets

- ▶ Speeding
- ▶ Seat belt
- ▶ Child safety seat
- ▶ Red Light
- ▶ Driving While Intoxicated

# Funding Levels

▶ 2000 FY	\$1,350,000
▶ 2001 FY	\$1,700,000
▶ 2002 FY	\$1,567,240
▶ 2003 FY	\$1,612,045
▶ 2004 FY	\$ 976,955
▶ 2005 FY	\$1,536,000
▶ 2006 FY	\$1,320,000
▶ 2007 FY	\$1,260,000

# Enforcement

	<u>Citations</u>	<u>DWI Arrests</u>	<u>Hours</u>
2000	97,318	524	39,038
2001	77,412	620	35,551
2002	72,334	676	32,676
2003	75,702	880	31,814
2004	39,688	695	21,100
2005	72,373	921	26,265
2006	75,093	319	20,982
2007	8,068	112	2,650

2007 FY Comp Grant began operations 11-9-06

# Statistical Information

	Fatal Crashes	Fatalities
2000	159	176
2001	171	187
2002	157	169
2003	142	156
2004	170	177
2005	150	158
2006	147	154

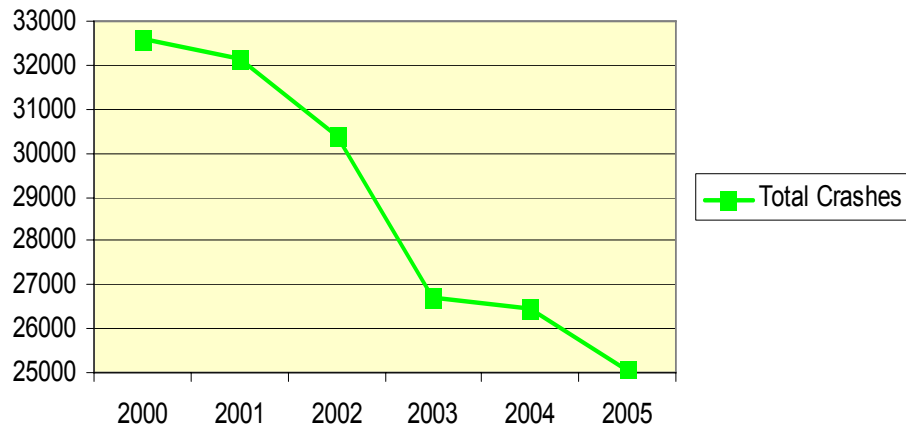
# Factors in Fatality Crashes

	<u>2003</u>	<u>2004</u>	<u>2005</u>
<u>Active Factors</u>			
▶ Speed	45%	27%	35%
▶ Fail Maintain Single Lane	34%	23%	20%
▶ Red Light	12%	8%	4%
<u>Passive Factors</u>			
▶ Seatbelt Non-Use	43%	46%	51%
▶ Alcohol	51%	54%	47%

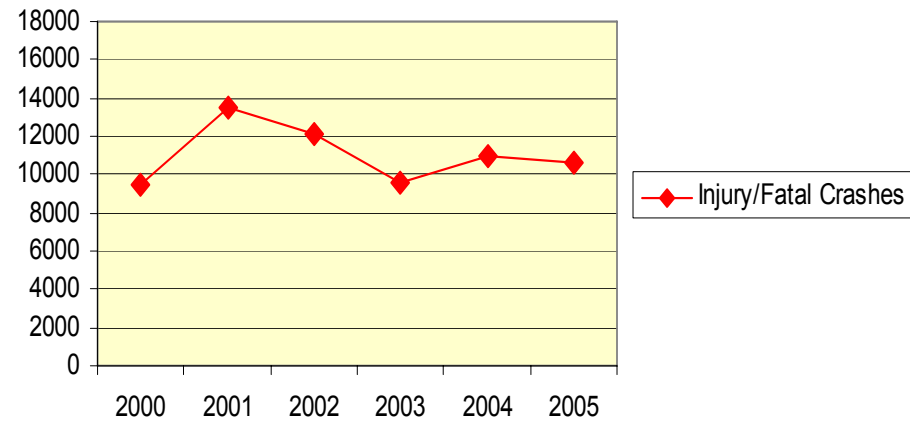


# Injury Crashes

## Total Reported Crashes



## Total Injury/Fatal Crashes



# National and State Traffic Fatality Statistics

	<u>National</u>	<u>Texas</u>
2001	42,196	3,736
2002	43,005	3,823
2003	42,884	3,821
2004	42,836	3,699
2005	43,443	3,504
Change	3%	-6%

City of Dallas down 15.5% during the same period.

# Interpretation

- ▶ The crash statistics along with the analysis of contributing factors aid us in identifying locations and causal actions of crashes.
- ▶ The NHTSA and TXDOT tailor the grants to address causal factors in injury/fatal crashes.
- ▶ Local sites are selected based on historical crash data, surveys for compliance and officer input.

# Site Selection

- ▶ Thirty-six sites within the City of Dallas.
- ▶ Pre and post surveys are conducted to determine the level of non-compliance.
- ▶ Sites are revised annually base on level of non-compliance and ease (safety) of enforcement.
- ▶ All sites are approved by Texas Department of Transportation.

# Success Story

- ▶ The Dallas Police Department Traffic Section is the model for grant effectiveness for the Texas Department of Transportation.
- ▶ Dallas received the maximum amount on the Comprehensive Grant, \$1,200,000, and an additional \$60,000 for the IDM Grant.
- ▶ This is also the largest grant in the State.

# Questions?