

The Great Trinity Forest Trails Plan

Trinity River Council Committee

Briefing

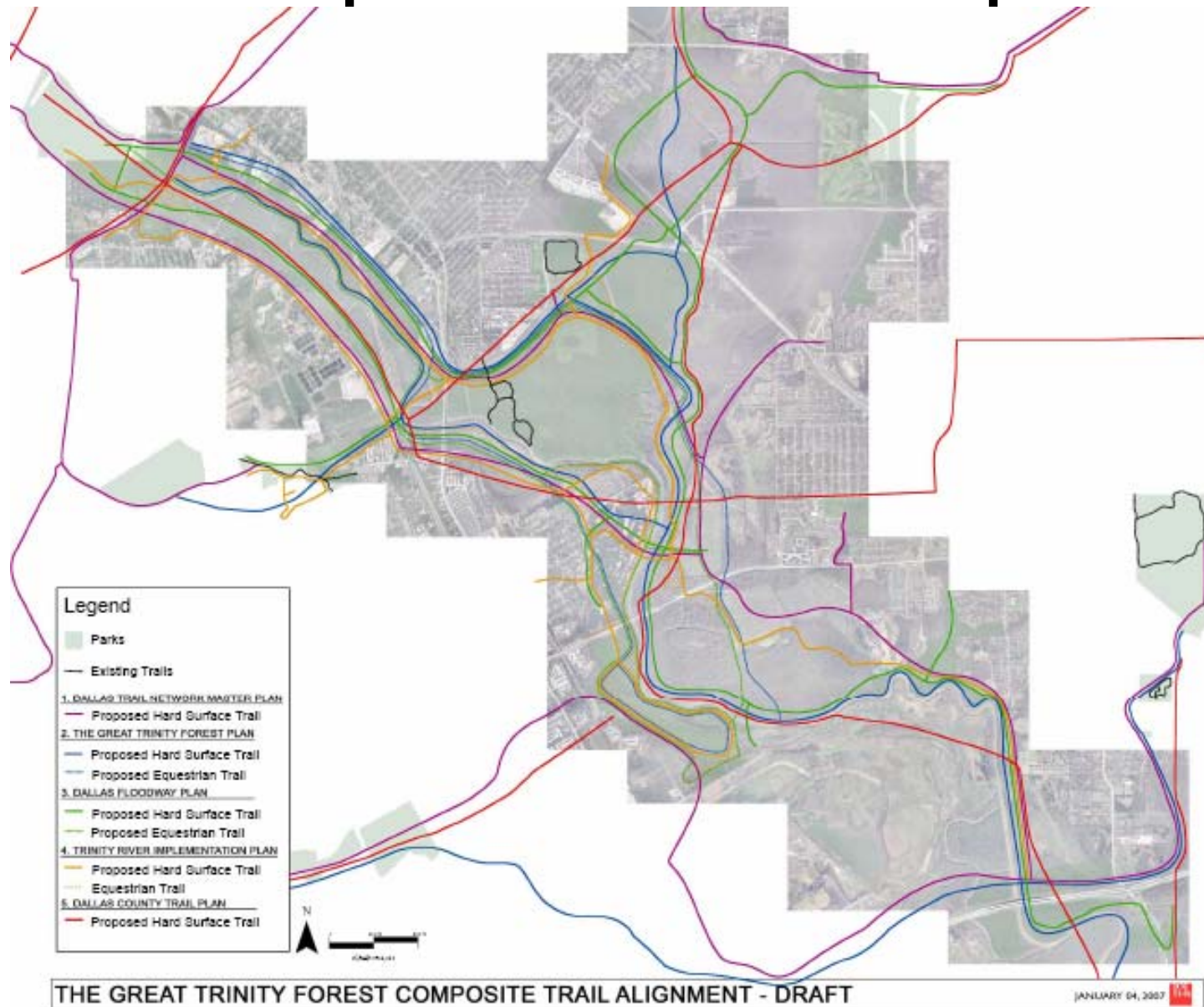
February 26, 2008



First Step

- **Consolidation of Existing Plans**
 - City of Dallas Trail Network Master Plan (March 2005)
 - The Great Trinity Forest Master Plan (1997)
 - Dallas Floodway Extension Recreation and Open Space Plan (February 1999)
 - Trinity Forest Master Plan (December 1999)
 - The Dallas County Trail Plan (1997)
- **Composite Trail Map - Draft**

Composite Trail Map



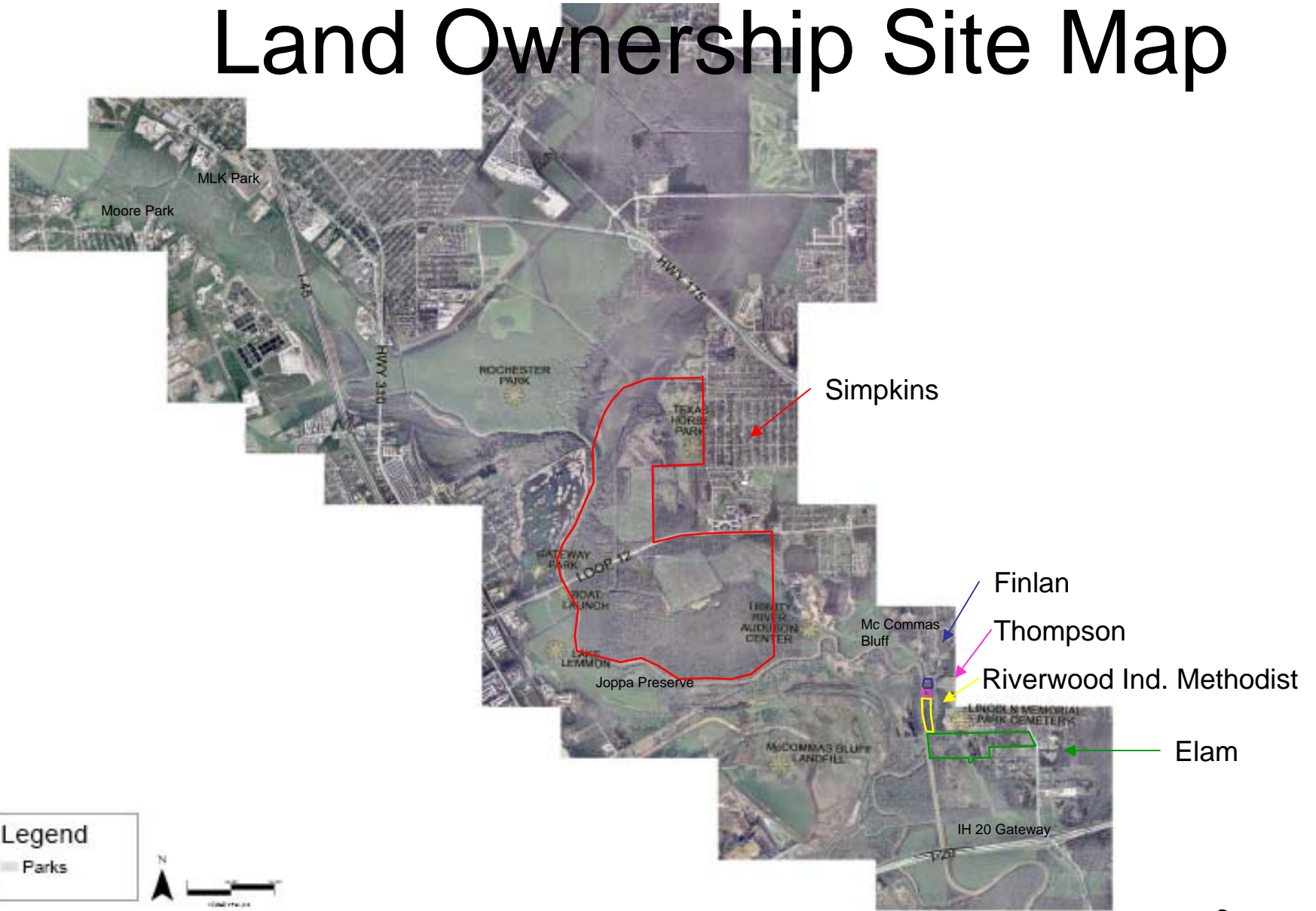
Next Steps

- **Identify Constraints**
 - Land Ownership
 - Logical Destinations
 - Impacts to On-Going Projects
 - Impacts to Mitigation Land
- **Identify Possible Corridors**
 - Coordinate with Park & Recreation Department & Other Partners
 - Walk the Corridors
 - Select Logical Corridors

Identify Constraints Land Ownership

- Project Area – Along the Trinity River from Corinth to Interstate 20
- Tracts of land still to acquire – Simpkins, Elam, Finlan, Thompson & Riverwood Ind. Methodist
- Currently Available Lands – Joppa Nature Preserve, McCommas Bluff Landfill (buffer zone), Sleepy Hollow Golf Course, Rochester Park, Linfield Landfill, McCommas Bluff Park

Land Ownership Site Map



Legend
Parks



Identify Constraints Logical Destinations

- Moore Park Gateway
- MLK Gateway
- Rochester Park Gateway
- Loop 12 Gateway
- Texas Horse Park
- Joppa Nature Preserve
- Trinity River Audubon Center
- McCommas Bluff
- IH 20 Gateway
- Adjacent Neighborhoods

Impacts to On-going Projects

- Upper Chain of Wetlands
 - Design Started
- Lower Chain of Wetlands
 - Under Construction
 - Limited access
- Mitigation Lands
 - Minimal Use of Land



Lower Chain of Wetlands Construction Site



Lower Chain of Wetlands Construction Site

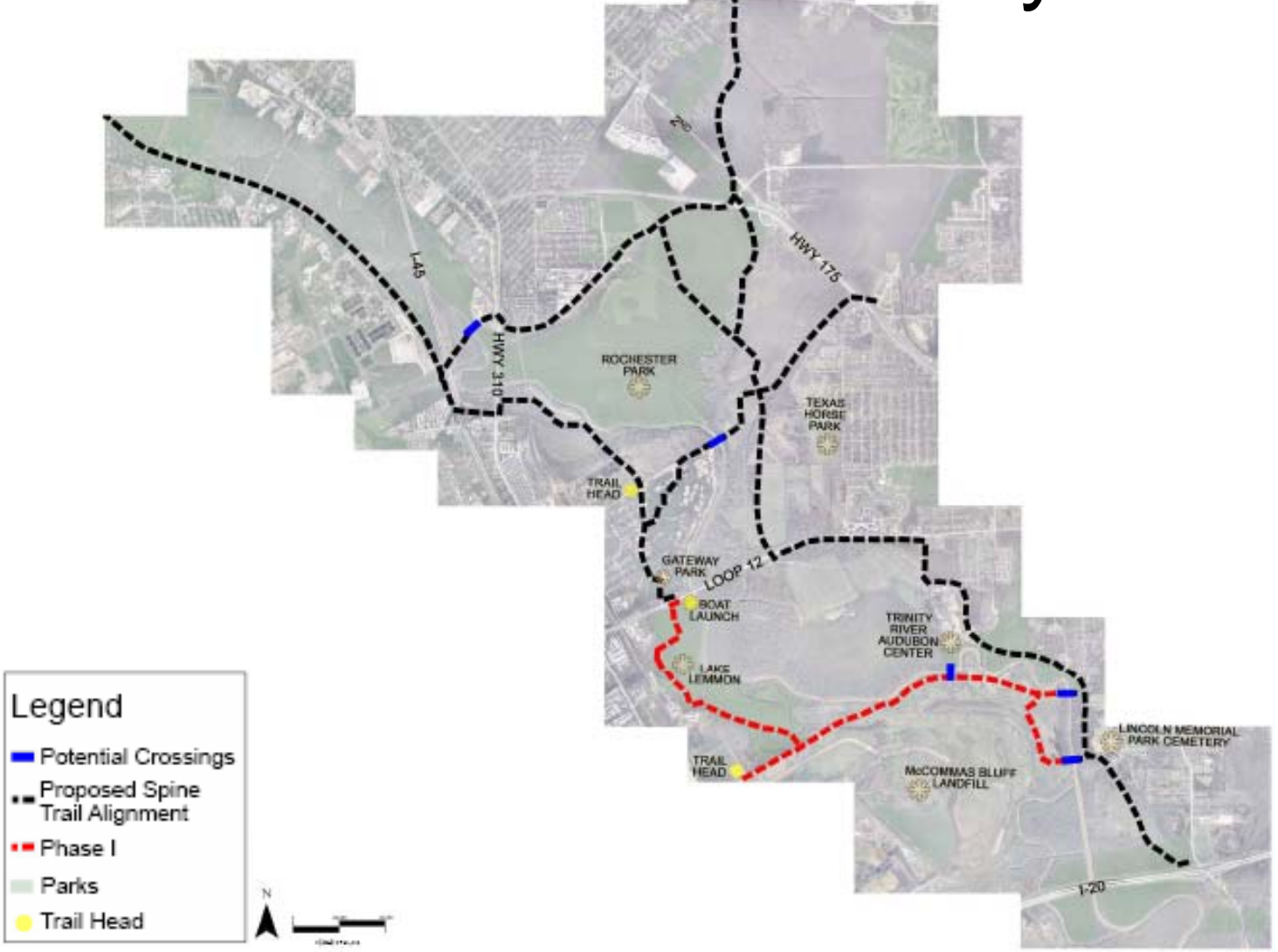
Identify Possible Corridors

- Coordinate with Park and Recreation Department and Other Partners
- Walk the Proposed Corridors
- Select Logical Corridors



Maintenance Road @
McCommas Bluff Landfill

Proposed Trail Alignment – Hard Surface Trails Only



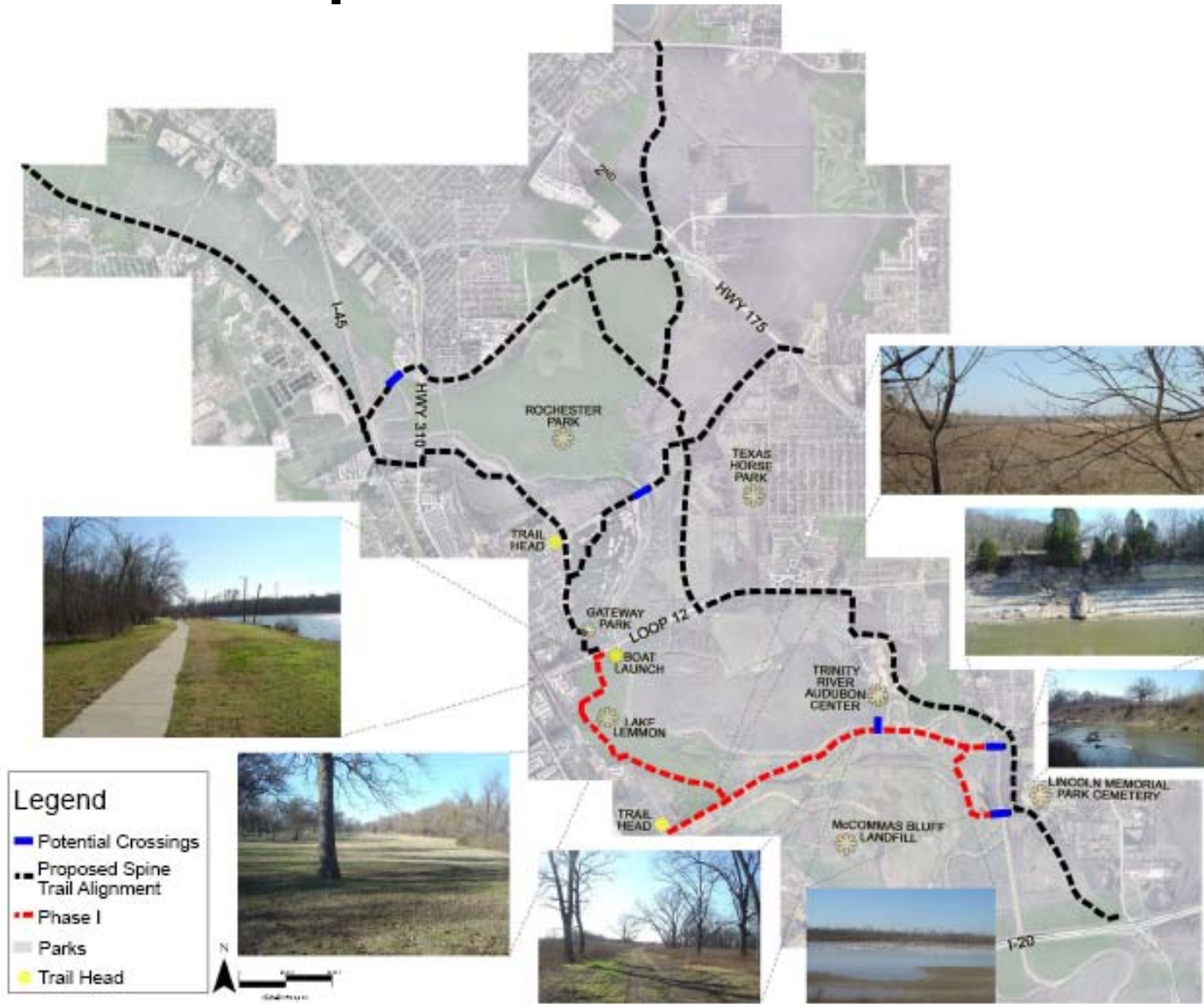
THE GREAT TRINITY FOREST PROPOSED SPINE TRAIL ALIGNMENT JANUARY 10, 2007

Proposed Phase 1

Identify an Achievable Phase 1 project based on all previous constraints

- Available Construction Funding including owners cost and contingencies
 - 98 Bond Funds for hard surface trails \$6.29 M
- Property we own or have access to

Proposed Phase 1



Schedule for Phase 1

- Estimated Construction Cost -- \$3.46 M
- Complete Design – February 29, 2008
- Advertise – March 12, 2008
- Open Bids – April 3, 2008
- Award Construction – May 28, 2008
- Begin Construction – June 2008
- Complete Construction – March 2009
(weather permitting)

Later Phases

- Phase 2 hard surface trails would link from phase 1 trail over to the Trinity River Audubon Center as funding permits
- Future phases would be funded from future bond programs
- The Great Trinity Forest Management Plan will include recommendations for the equestrian trails through the forest as well as other soft surface trails including nature trails