

Memorandum



CITY OF DALLAS

DATE February 13, 2009

TO Trinity River Committee Members:
David A. Neumann (Chair)
Mayor Pro Tem Dr. Elba Garcia (Vice Chair)
Deputy Mayor Pro Tem Dwaine Caraway
Carolyn R. Davis
Linda Koop

Pauline Medrano
Mitchell Rasansky
Steve Salazar

SUBJECT **Bellevue Pedestrian Connector**

The attached is briefing material for the February 17, 2009 Trinity River Corridor Project Committee meeting regarding the Bellevue Pedestrian Connector Project. The purpose of this briefing is to provide you information on the design contract award for this project.

Please contact me if you have questions.

A handwritten signature in cursive script that reads "Jill Jordan".

Jill A. Jordan, P.E.
Assistant City Manager



THE TRINITY
DALLAS

c: Mary K. Suhm, City Manager
Ryan S. Evans, First Assistant City Manager
Ramon F. Miguez, P.E., Assistant City Manager
A.C. Gonzalez, Assistant City Manager
Forest E. Turner, Interim Assistant City Manager
Dave K. Cook, Chief Financial Officer
Thomas P. Perkins, Jr., City Attorney
Craig D. Kinton, City Auditor
Judge Victor C. Landers
Helena Stevens-Thompson, Asst. to the City Manager
Frank Libro, Director, Public Information Office

Bellevue Pedestrian Connector



Trinity River Corridor Project
Committee
February 17, 2009



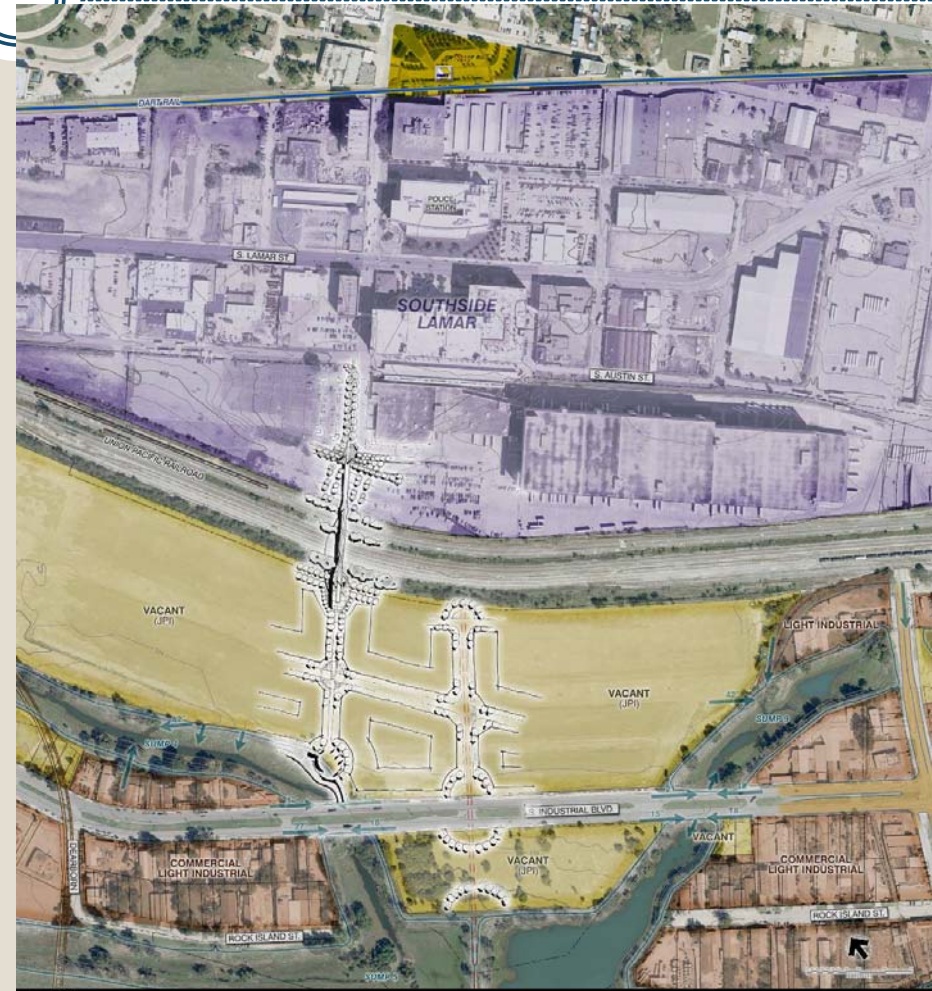
Project Site



THE TRINITY
DALLAS

- **Goal:**

- To provide a vital pedestrian link along Bellevue Street, connecting the Cedars DART Station with a proposed major development, and ultimately into the Trinity River Corridor



January 13, 2009



BELLEVIEW PEDESTRIAN BRIDGE CONCEPT

CITY OF DALLAS, TEXAS



Project Site



THE TRINITY
DALLAS

- **Location:**

- The site is located on Belleview Street, between Cadiz and Corinth Street extending from South Austin Street west to the JPI Property
- This will serve as a major pedestrian linkage to the Trinity River Corridor and other future development in the Cedars area



January 13, 2009



BELLEVIEW PEDESTRIAN BRIDGE CONCEPT
CITY OF DALLAS, TEXAS



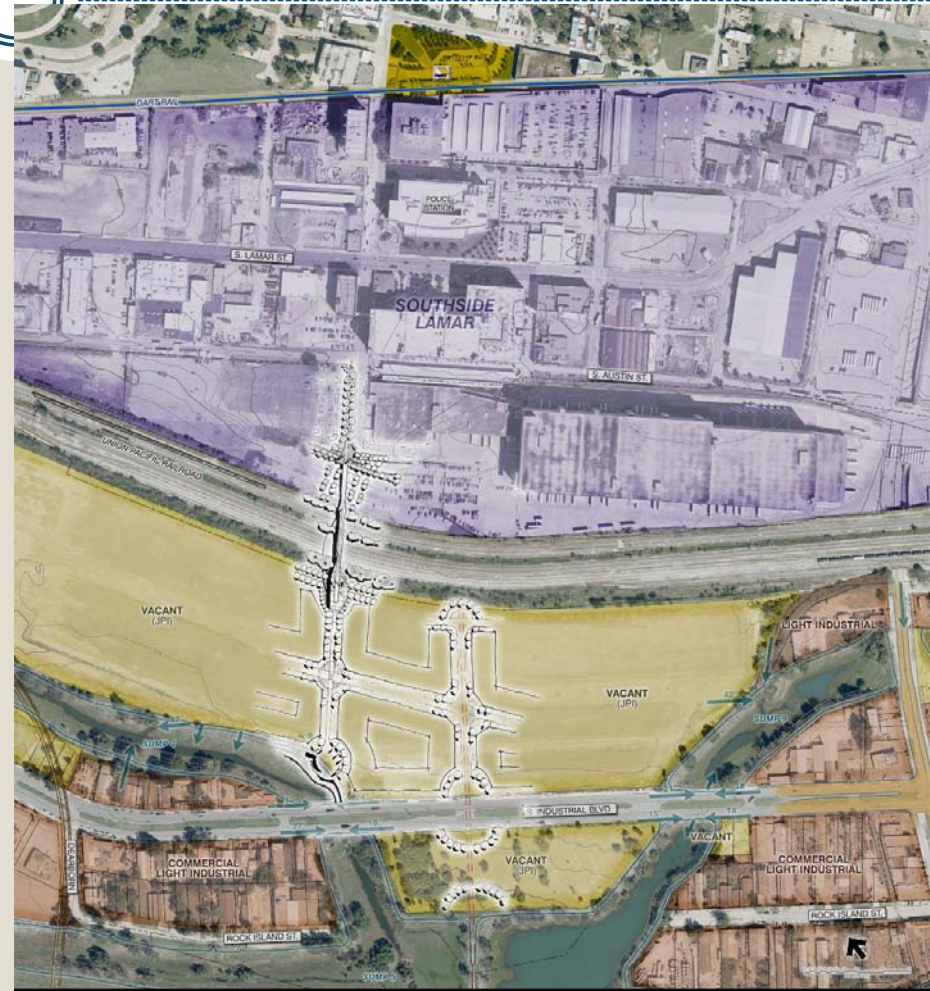
Project Site



THE TRINITY
DALLAS

- **Bridge Components:**

- Pedestrian bridge spanning 450' across a parking lot and the UP railroad tracks (16'-20' in width)
- Bridge platform
- Overlooks
- Ramps
- Stairs
- Pedestrian plazas
- Lighting
- Trails
- Landscaping
- Signage



January 13, 2009



BELLEVIEW PEDESTRIAN BRIDGE CONCEPT
CITY OF DALLAS, TEXAS

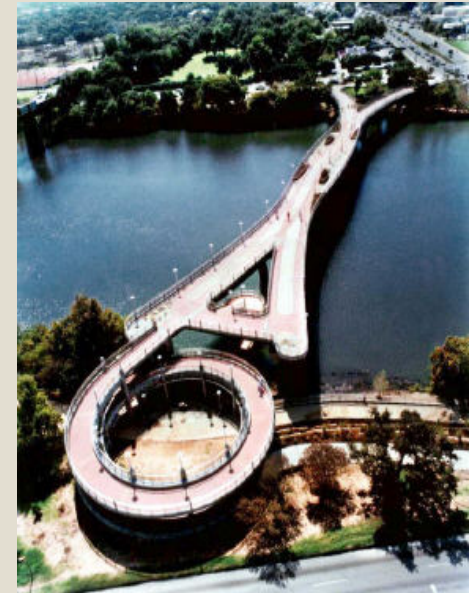




- **Halff Associates Inc.**
 - Landscape Architecture and Engineering - Site and Trail Master Planning and Schematic Design
 - Preliminary Environmental Evaluation
 - 3D Visual Analysis Study
- **Charles Gojer & Associates**
 - Conceptual and Schematic Structural Bridge Design
- **Garcia Land Data**
 - Surveying
- **Apex Cost Consulting**
 - Cost Estimating



- The Bellevue Pedestrian Bridge will provide:
 - Convenient access from the Cedars area and DART Station to the Trinity River Corridor and future developments
 - Signature visual component
 - Streetscaping along Bellevue Street





- Phases 1 and 2
 - ✦ Kick-off Meeting and Completion of Topographical Survey 1 Month
- Phase 3
 - ✦ Master Plan Development 2 Months
- Phase 4
 - ✦ Schematic Design 2 Months
- Phase 5
 - ✦ Preliminary Environmental Assessment 2 to 3 Months
- Phase 6
 - ✦ 3D Visual Analysis Study 1 Month
- **Total time schedule** 6 to 9 Months
(some phases to run concurrently)
- **Estimated Completion** November 2009



- 2006 Capital Bond Funds:
 - November 2008 - \$337,000
 - November 2009 - \$1,348,000

- Professional Services Contract Amount for Consideration:
 - \$187,344



- Park and Recreation Board Approval
 - February 5
- Trinity River Committee Consideration
 - February 17
- City Council Consideration
 - February 25