

Memorandum



DATE: February 17, 2011

TO: Members of the Public Safety Committee

SUBJECT: **Prostitution Diversion Initiative**

Attached is briefing material on the "Prostitution Diversion Initiative" to be presented to the Members of the Public Safety Committee on Tuesday, February 22, 2011.



Ryan S. Evans
First Assistant City Manager

Attachment

CC: Honorable Mayor and Members of the Dallas City Council
Mary K. Suhm, City Manager
Deborah Watkins, City Secretary
Tom Perkins, City Attorney
Craig Kinton, City Auditor
C. Victor Lander, Administrative Municipal Judge
Jill A. Jordan, P.E., Assistant City Manager
A.C. Gonzalez, Assistant City Manager
Forest E. Turner, Assistant City Manager
Jeanne Chipperfield, Chief Financial Officer
Helena Stevens-Thompson, Assistant to the City Manager Mayor/City Council



Prostitute Diversion Initiative (PDI)

Public Safety Committee

February 22, 2011



Problem Identified

- Traditional enforcement efforts addressing the changing dynamics of truck stops and both local and national concerns have lost effectiveness
 - Prostitution
 - Homicides
 - Drug and Human Trafficking
 - Fraudulent Documents
 - Robbery
 - Theft
 - Assaults

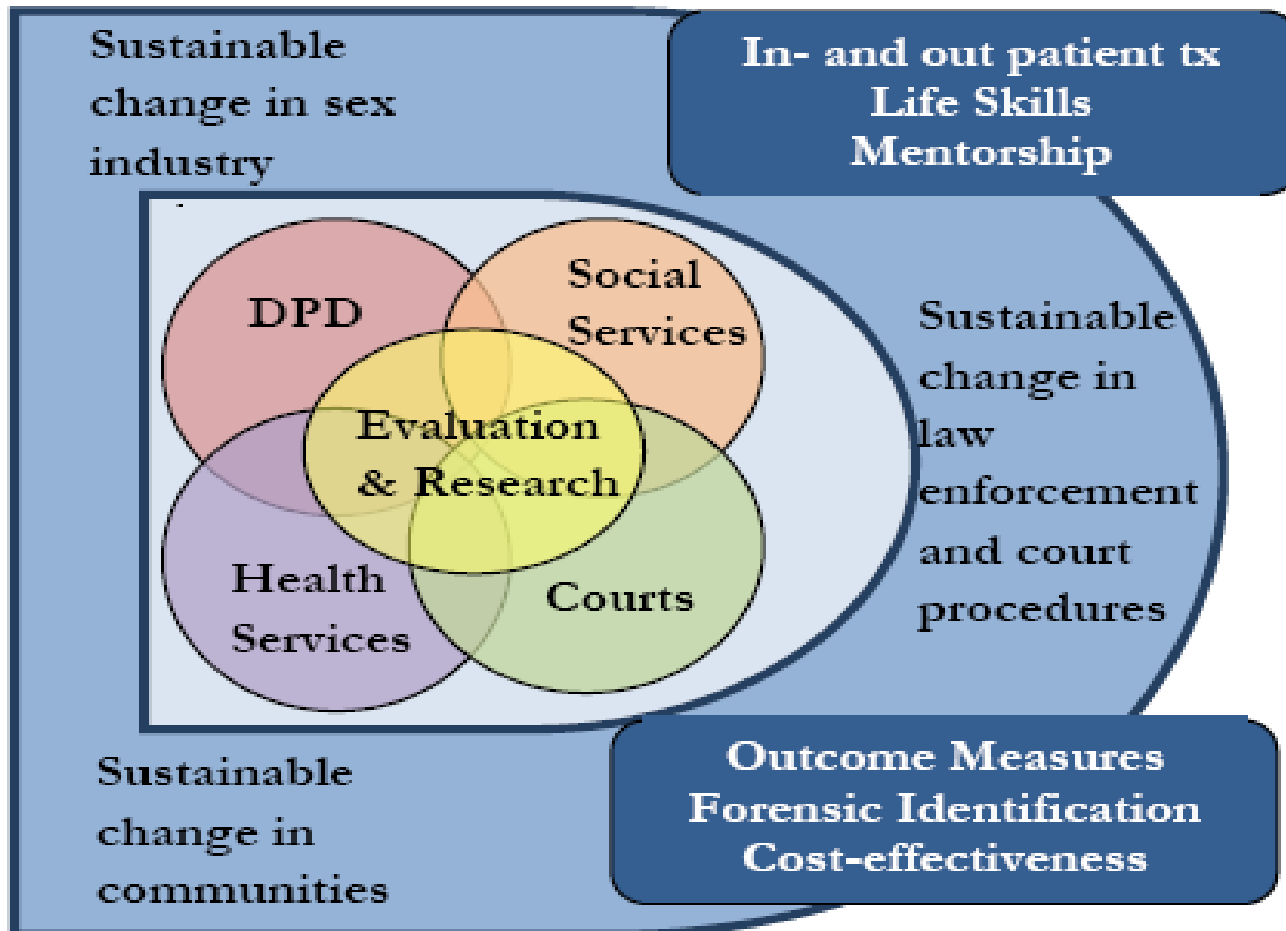
Program Overview

- The PDI program was developed by the Dallas Police Department (DPD) in collaboration with multiple organizations to radically change the way police would approach individuals engaged in prostitution
- The program gives prostitutes an opportunity to gain access to a comprehensive and multi-step in-and-out patient treatment program as an alternative to further victimization

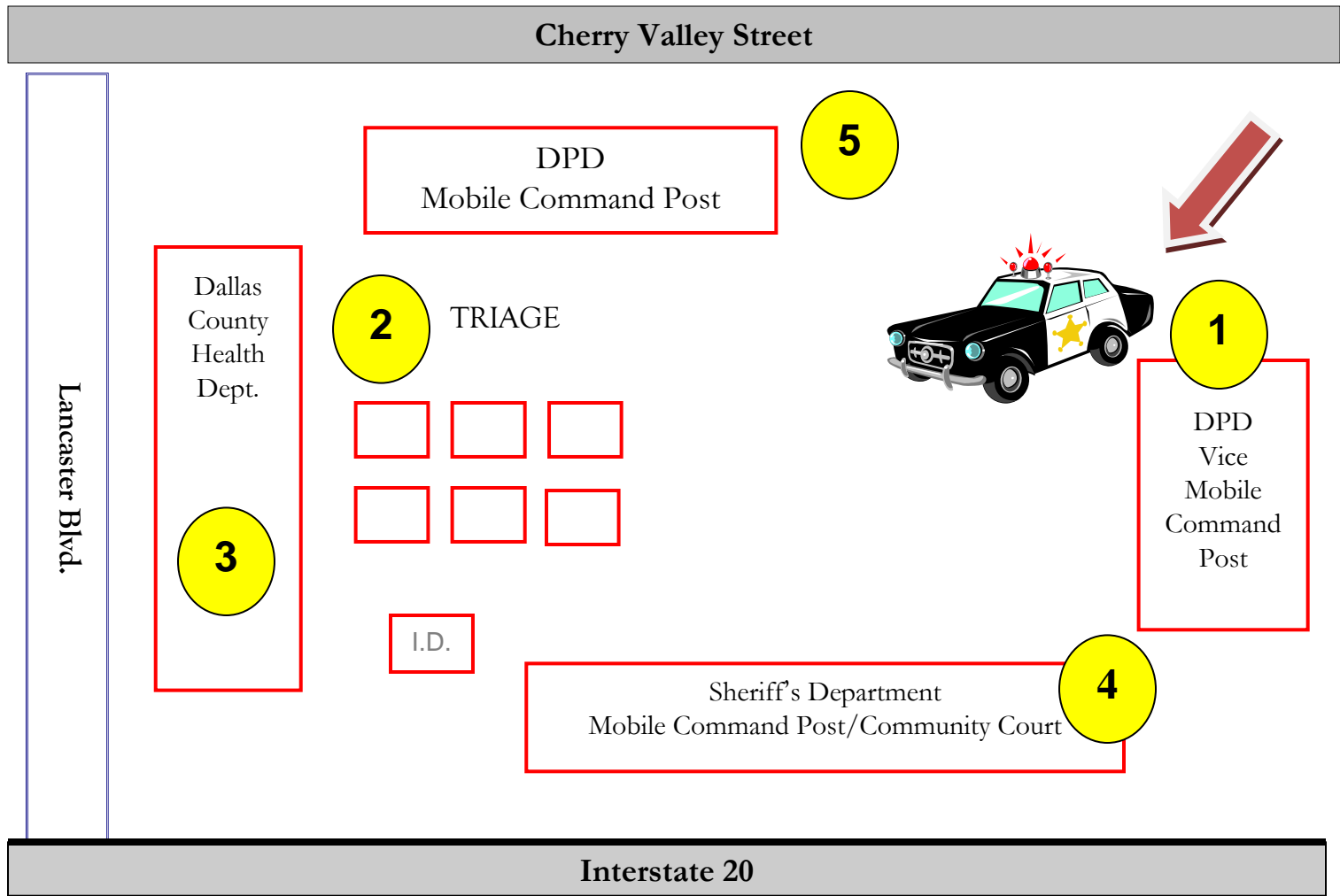
Mission

- Offer professional long-term services for victims of prostitution and options for exit
- PDI is unique from other diversion programs
 - Law enforcement led
 - Brings services to the streets
 - Provides long-term intelligence strategy

Strength in Partnerships



PDI: Schematic Representation of Site



Continuation of Services in Treatment – New Life

- Shelter and food
- Medical and mental health treatment
- Child care
- Job skills training
- Intensive out-patient counseling
- Opportunity for resolution of pending legal issues upon completion of program

High Risk Potential Victim's DNA Database

Dallas County Sheriff's Office
Joint Initiative



Crime Rate Reduction

- Since 2006 there has been a crime reduction of 59.9% at the I-20 truck stops and surrounding neighborhoods

TRUCK STOPS				
OCT 1, 2006 - SEP 30, 2007 VS OCT 1, 2007 - SEP 30, 2008				
OFFENSE	06/07	07/08	NUM DIFF	PCT DIFF
AGGRAVATED ASSAULT	42	30	-12	-28.6%
BURGLARY-BUSINESS	8	15	7	87.5%
BURGLARY-RESIDENCE	36	45	9	25.0%
MURDER	0	1	1	*
OTHER THEFT	104	78	-26	-25.0%
RAPE	5	1	-4	-80.0%
ROBBERY-BUSINESS	9	8	-1	-11.1%
ROBBERY-INDIVIDUAL	85	62	-23	-27.1%
THEFT-BMV	516	519	3	0.6%
THEFT-SHOPLIFT	21	31	10	47.6%
UUMV	99	90	-9	-9.1%
TOTAL	925	880	-45	-4.9%

TRUCK STOPS				
OCT 1, 2008 - SEP 30, 2009 VS OCT 1, 2009 - SEP 30, 2010				
OFFENSE	08/09	09/10	NUM DIFF	PCT DIFF
AGGRAVATED ASSAULT	12	29	17	141.7%
BURGLARY-BUSINESS	13	9	-4	-30.8%
BURGLARY-RESIDENCE	34	32	-2	-5.9%
MURDER	0	0	0	*
OTHER THEFT	54	42	-12	-22.2%
RAPE	2	2	0	0.0%
ROBBERY-BUSINESS	7	3	-4	-57.1%
ROBBERY-INDIVIDUAL	18	26	8	44.4%
THEFT-BMV	338	160	-178	-52.7%
THEFT-SHOPLIFT	27	32	5	18.5%
UUMV	37	36	-1	-2.7%
TOTAL	542	371	-171	-31.5%

TRUCK STOPS				
OCT 1, 2007 - SEP 30, 2008 VS OCT 1, 2008 - SEP 30, 2009				
OFFENSE	07/08	08/09	NUM DIFF	PCT DIFF
AGGRAVATED ASSAULT	30	12	-18	-60.0%
BURGLARY-BUSINESS	15	13	-2	-13.3%
BURGLARY-RESIDENCE	45	34	-11	-24.4%
MURDER	1	0	-1	-100.0%
OTHER THEFT	78	54	-24	-30.8%
RAPE	1	2	1	100.0%
ROBBERY-BUSINESS	8	7	-1	-12.5%
ROBBERY-INDIVIDUAL	62	18	-44	-71.0%
THEFT-BMV	519	338	-181	-34.9%
THEFT-SHOPLIFT	31	27	-4	-12.9%
UUMV	90	37	-53	-58.9%
TOTAL	880	542	-338	-38.4%

TRUCK STOPS				
OCT 1, 2006 - SEP 30, 2007 VS OCT 1, 2009 - SEP 30, 2010				
OFFENSE	06/07	09/10	NUM DIFF	PCT DIFF
AGGRAVATED ASSAULT	42	29	-13	-31.0%
BURGLARY-BUSINESS	8	9	1	12.5%
BURGLARY-RESIDENCE	36	32	-4	-11.1%
MURDER	0	0	0	*
OTHER THEFT	104	42	-62	-59.6%
RAPE	5	2	-3	-60.0%
ROBBERY-BUSINESS	9	3	-6	-66.7%
ROBBERY-INDIVIDUAL	85	26	-59	-69.4%
THEFT-BMV	516	160	-356	-69.0%
THEFT-SHOPLIFT	21	32	11	52.4%
UUMV	99	36	-63	-63.6%
TOTAL	925	371	-554	-59.9%

PDI: Preliminary Evaluation

(October 2007- September 2010)

- 542 contacted on the streets
 - Majority by arrest / 30 walk ups
 - 2 juveniles, 3 promoters of prostitution were excluded for a total of 537
 - 80 re-offended and re-entered program
 - 171 have not been re-arrested
- 295 eligible for immediate diversion
 - 52% opted for treatment
 - 32% completed treatment

Successes

- Prostitute Solicitation School
- Homicide Suspect Apprehended
- Development of informants
- Two juveniles and 1 trafficked person rescued
- Salvation Army Support Group
- PDI/New Life 501c3

Questions?