



West Levee – Norwood 345kV

Overhead and Underground Transmission Line

Update

Trinity River Corridor Project Committee
March 4, 2008





Purpose



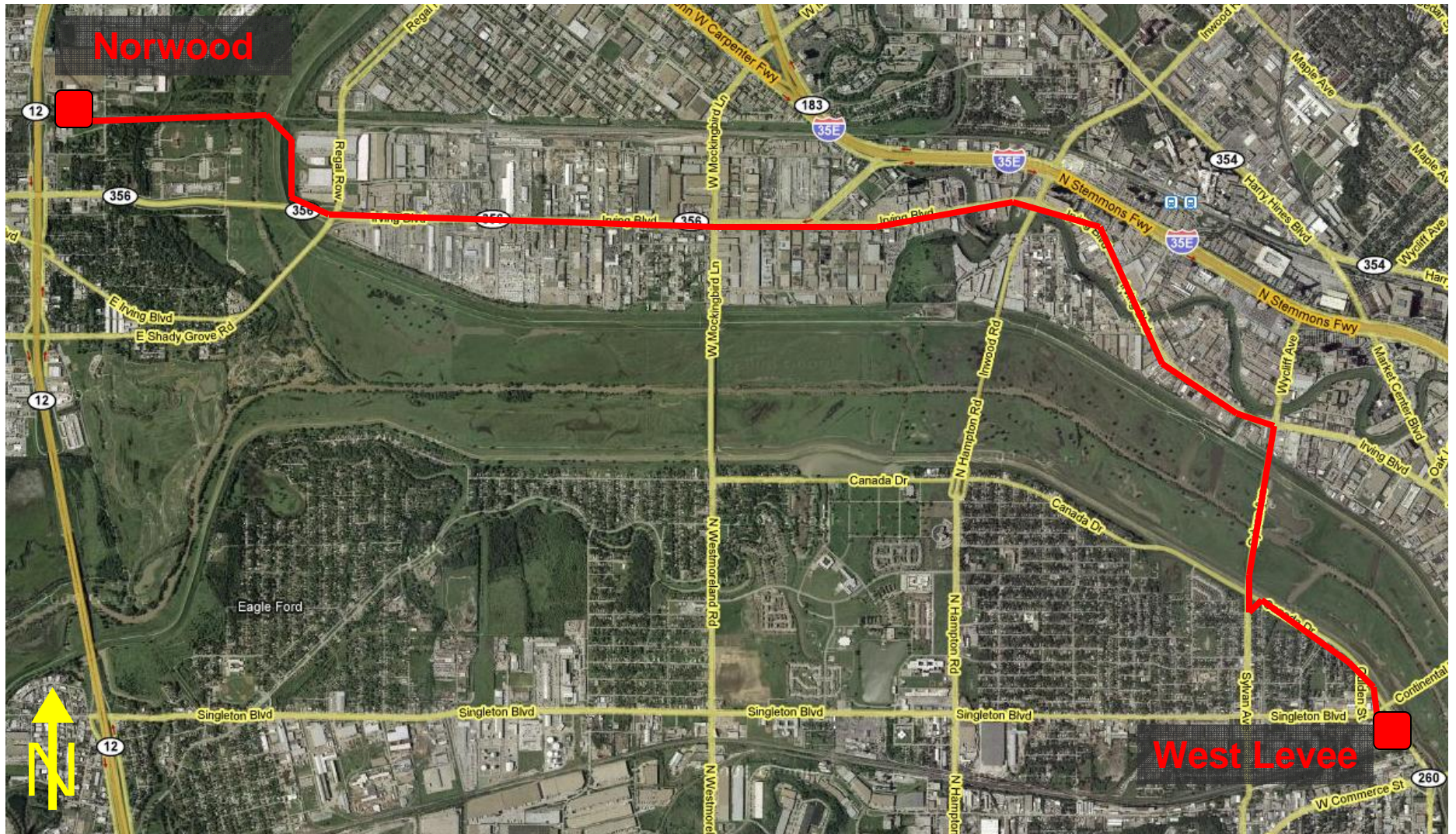
- Update Committee on Oncor Electric Delivery's proposed West Levee – Norwood Transmission Line
 - Background
 - Necessity
 - History
 - Overview / Status
 - Timeline

Project Background and Necessity



- **Construct a 7 mile 345kV Transmission Line between West Levee and Norwood – in service by December 2009**
-
- Currently one 345kV line serving Downtown Dallas and the surrounding area:
 - Enough energy to power 400,000 homes***
 - Without West Levee – Norwood line, loss of the existing line will severely strain the ability to serve this area with potential to cause extended power outages near downtown Dallas during high load conditions.
-

Location



Project Background and Necessity cont.



Benefits to the City of Dallas

- Adds second source to 345kV system serving the area
- Eliminates system strain for loss of existing 345kV line
- Improves reliability
- Without second source and with loss of existing line, local generation would have to run. This generation throughout the summer may not be possible due to NOX emission limits in the City of Dallas.
- Meets Electric Reliability Council of Texas Planning Criteria Guides

First for City of Dallas and Oncor System

- First 345kV underground circuit
- Highest capacity underground line

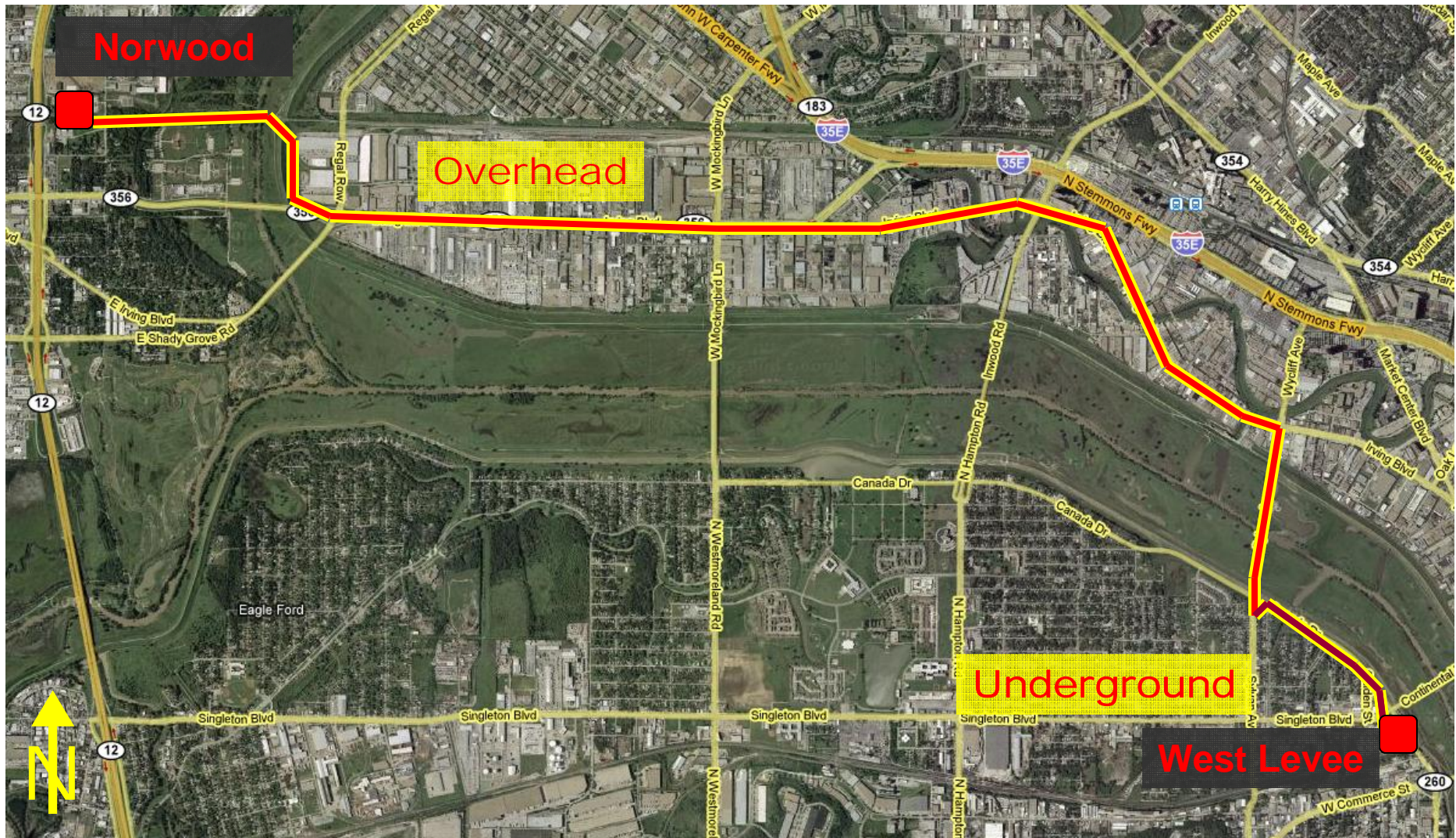
History



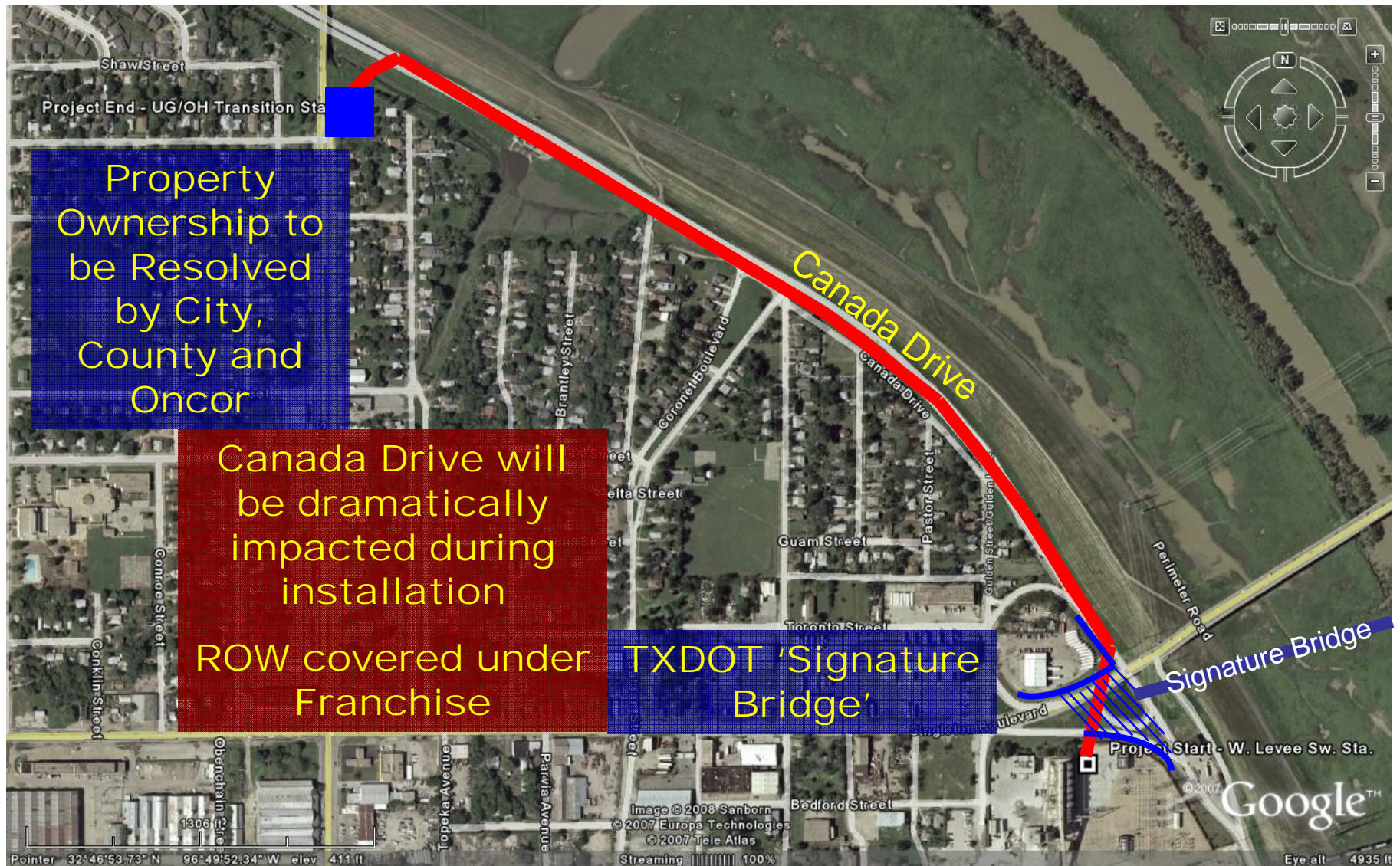
- **March 2004:** City Council approved route negotiated by City and Oncor
- **April 2004:** City Council authorized a Memorandum of Understanding – City and Oncor will work towards mutually agreeable solutions to address issues concerning power transmission lines in the Trinity River Corridor
- **March 2006:** City and Oncor negotiated route filed with PUCT (Public Utility Commission of Texas).
- **May 2007:** City Council authorized an agreement with Oncor permitting the escrow of \$4.5M in City funds to pay for the City's 25% share of the incremental underground cost, \$13.5M remainder to be paid by electric customers of Texas. These costs were developed in 2005.
- **June 2007:** Current route was approved by PUCT along City of Dallas preferred route

Route Sections

PUCT Approved Route



Underground Points of Interest



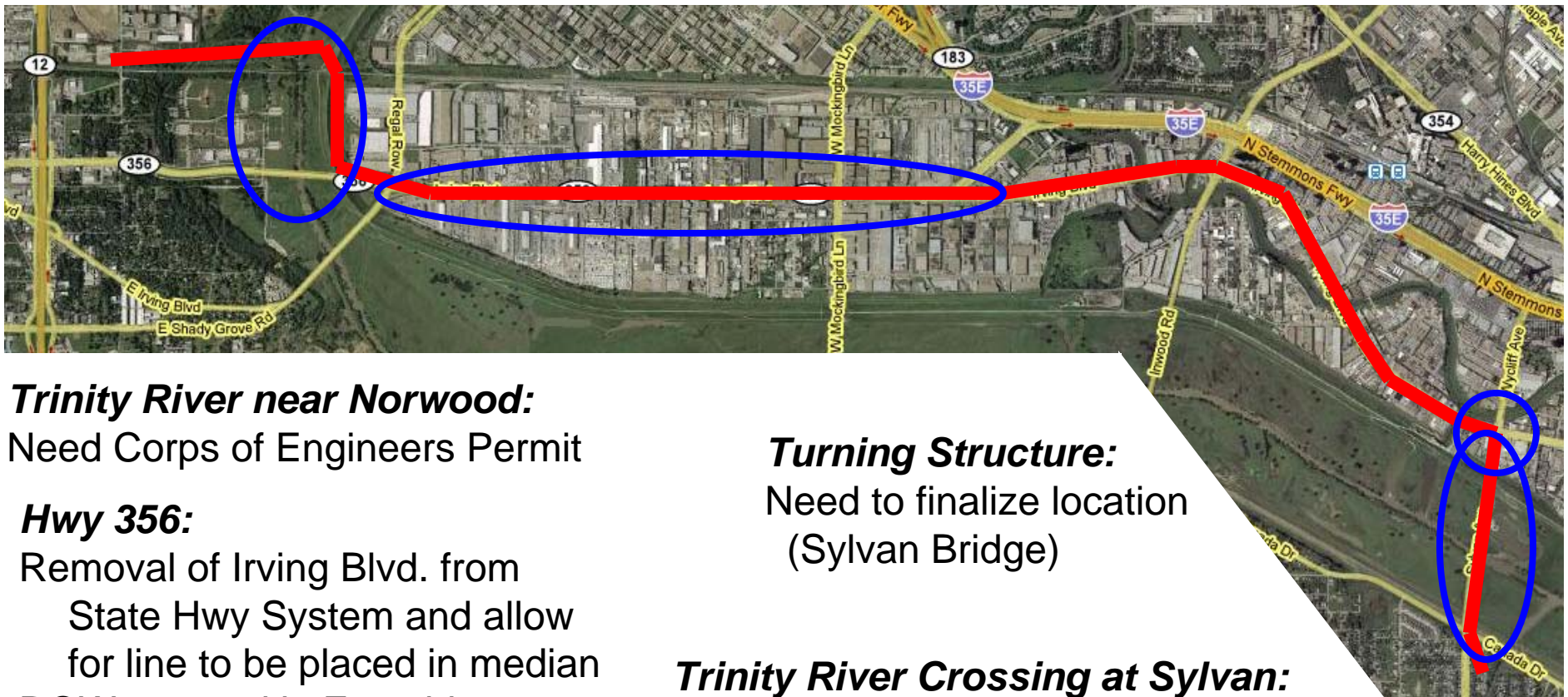
Property Ownership to be Resolved by City, County and Oncor

Canada Drive will be dramatically impacted during installation

ROW covered under TXDOT 'Signature Bridge'

TXDOT 'Signature Bridge'

Overhead Points of Interest



Trinity River near Norwood:
Need Corps of Engineers Permit

Hwy 356:
Removal of Irving Blvd. from
State Hwy System and allow
for line to be placed in median
ROW covered in Franchise
agreements

***Irving Blvd. will be impacted by
construction***

Turning Structure:
Need to finalize location
(Sylvan Bridge)

Trinity River Crossing at Sylvan:
Need Corps of Engineers Permit
Need Easement from City
Establish line alignment along Sylvan Bridge to
minimize impact on Crow Lake

Critical Path

To meet December 1, 2009 in-service



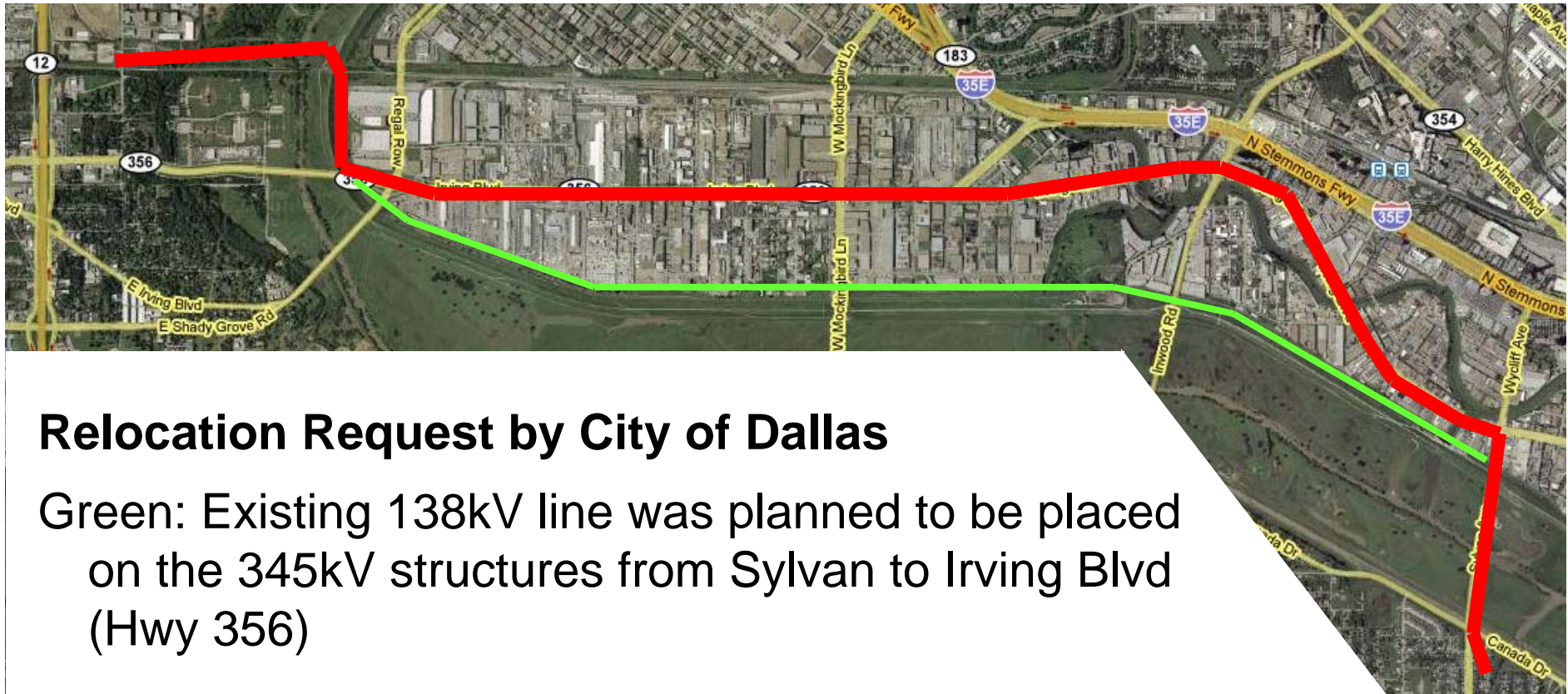
City of Dallas

- **March 25, 2008** Location of underground to overhead transition site to be finalized by City, County and Oncor
- **By April 2, 2008** Removal of Irving Blvd. from State Highway system
- **April 17, 2008** Begin public hearing process for easement from City of Dallas for crossing on the east side of Sylvan Bridge
- **June 11, 2008** Council approval of easement from City of Dallas for crossing on the east side of Sylvan Bridge

Oncor

- **April 2, 2008** Easements must be identified for turning structure at the corner of Sylvan and Irving Blvd
- **March 2, 2009** Corps of Engineers river crossing permits to be completed (Start of Construction)

138kV Relocation



Relocation Request by City of Dallas

Green: Existing 138kV line was planned to be placed on the 345kV structures from Sylvan to Irving Blvd (Hwy 356)

City of Dallas timeline is undetermined

This project is unfunded – Estimated City cost was \$3.2M in 2005

Next Steps



- April 17, 2008 Begin public hearing process for easement from City of Dallas for crossing on the east side of Sylvan Bridge
- June 11, 2008 Council approval of easement from City of Dallas for crossing on the east side of Sylvan Bridge
- Finalize the location and property needed for underground to overhead line transition site.
- Begin actions to secure all easements and permits needed for underground and overhead construction.
- Coordinate construction scheduling with respect to Margaret Hunt Hill Bridge, Sylvan Bridge, and Oncor work
- Coordinate traffic impacts on Canada Dr. and Irving Blvd.
- Work with City of Dallas to locate structure locations on Irving Blvd.