

Memorandum



DATE February 28, 2014

TO Members of the Budget, Finance & Audit Committee: Jerry R. Allen (Chair),
Jennifer S. Gates (Vice Chair), Tennell Atkins, Sheffie Kadane, Philip T. Kingston

SUBJECT Dallas Central Appraisal District 2014- 2015 Proposed Budget

The Budget, Finance, and Audit Committee's March 3, 2014 agenda includes a briefing on the Dallas Central Appraisal District (DCAD) 2014-2015 Proposed Budget. DCAD's summary materials are attached for your information. Mr. Ken Nolan, Executive Director and Chief Appraiser for DCAD, will present the budget and answer questions.

The DCAD Board of Directors plans to adopt the district's budget on May 7, 2014. From that point, taxing units have 30 days to pass a resolution if they choose not to approve the budget. It does not take effect and the DCAD Board must adopt a new budget within 30 days.

Please contact me if you need additional information.



Jeanne Chipperfield
Chief Financial Officer

Attachment

c: Honorable Mayor and Members of the City Council	Jill A. Jordan, P.E., Assistant City Manager
A.C. Gonzalez, City Manager	Forest E. Turner, Assistant City Manager
Rosa A. Rios, City Secretary	Joey Zapata, Assistant City Manager
Warren M.S. Ernst, City Attorney	Charles M. Cato, Interim Assistant City Manager
Daniel F. Solis, Administrative Judge	Theresa O'Donnell, Interim Assistant City Manager
Craig D. Kinton, City Auditor	Frank Libro, Public Information Officer
Ryan S. Evans, Interim First Assistant City Manager	Elsa Cantu, Assistant to the City Manager



**DALLAS CENTRAL
APPRAISAL DISTRICT**

2014 - 2015

PROPOSED BUDGET

BUDGET OVERVIEW



2014 - 2015

PROPOSED BUDGET

@

Dallas Central Appraisal District

2014/2015 Proposed Budget

Budget Comparison

Executive Summary

	2013/2014	2014/2015
	<u>Approved</u>	<u>Proposed</u>
BUDGET EXPENDITURES:		
Salaries & Wages	\$12,315,478	\$12,980,393
Auto Expense	764,890	765,140
Supplies & Materials	544,590	616,421
Operational Services	68,500	75,000
Maintenance of Structure	375,934	352,928
Maintenance of Equipment	221,045	260,145
Contractual Services	559,617	499,539
Sundry Expenses	289,358	295,704
Insurance & Benefits	5,030,951	5,544,681
Professional Services	1,505,024	1,500,781
Capital Expenditures	197,590	119,100
Technology Development	0	0
Contingency	0	0
Total Expenditures	\$21,872,977	\$23,009,832
OPERATING FUND SOURCES:		
Entity Allocations (Local Support)	\$21,632,977	\$22,339,832
Transfer Funds from 2012/2013	0	430,000
Rendition Fees	230,000	230,000
Investment Proceeds	0	0
Other Income	10,000	10,000
Total Revenues	\$21,872,977	\$23,009,832



2014/2015

PROPOSED BUDGET OVERVIEW

The 2014/2015 Proposed Budget is highlighted in the attached document as follows:

1. The 2014/2015 Proposed Budget of \$23,009,832 is an increase of 5.20% from the 2013/2014 Approved Budget of \$21,872,977. However, the net effective increase to the taxing entities is 3.23% due to the utilization of reserve surplus funds from the 2012/2013 Budget for merit salary increases. That budget amount is \$22, 579,832. This is the first significant budget increase in several years.
2. The 2014/2015 Proposed Budget calls for a total of 228 full-time positions which is down one from the total in the 2013/2014 Budget. Twenty-two (22) positions have been eliminated over the last previous 6 years. The budget notes personnel by departments/divisions as follows:
 - **Office of Chief Appraiser Department.** The department has seven (7) positions and includes the divisions of Chief Appraiser's Office, the Community Relations Officer, Human Resources, and Quality Control.
 - **Administrative Services Department.** The divisions included in this department are Administration, Finance/Purchasing, Customer Service, Appeals and Support, Building Services and the Appraisal Review Board (ARB). There are thirty two (32) employees in this department and ninety (90) ARB members.
 - **Legal Services Department.** There are a total of three (3) employees in this department.
 - **Information Technology (IT) Department.** The divisions included are Information Technology and the Geographic Information System (GIS) . There is a total of fifteen (15) employees in this department.
 - **Appraisal Services Department.** This department includes the divisions of Central Appraisal, Residential, Commercial, Business Personal Property, and Property Records/Exemptions totaling one hundred seventy one (171) employees. One position was eliminated in this budget for 2014/2015.
3. For the past budget years, 2010/2011, 2011/2012 and 2012/2013, the DCAD Budgets did not contain any merit increase or structure adjustments for District employees with full time salaries and wages. The 2013/2014 Proposed Budget provided a 3.00% merit increase and structure adjustment for employees which was funded with reserve surplus funds approved by the Board of Directors. For the 2014/2015 Proposed Budget a 3% merit increase is proposed. This figure is tied directly to the average salary/merit increases and adjustments given by the taxing entities in 2013/2014, which was 2.92%. DCAD bases any merit increases on what the taxing entities have been afforded to their employees. Funds are added to address the Paid Time Off program. Overall all salaries and wages increased again in this proposed budget.
4. Overtime funds are included for appraisal support staff assisting with legally required after hours informal and formal hearings with property owners during the ARB process. Funds are also included for Building Services, Appeals and Support, Customer Service, and the Appraisal Departments during the ARB process.

5. Contract Labor includes funds for temporary services for the Business Personal Property verification and leased equipment projects, temporary clerical help during the ARB process, and for off-duty police officers used during the ARB process.
6. Other increases and decreases in the Proposed Budget are noted as follows:
Auto Expenses for the monthly auto allowance for all appraisal staff remains at \$600 per month and for management/administrative staff at \$200 per month.

Supplies and Materials increased slightly versus last year's budget primarily in the categories of Postage and Freight, Computer Supplies, and Software costs. Postage costs were increased for the mailing of appraisal and ARB notices and due to a postal increase. Cost increases were also noted in Office Equipment Expense and Building Supplies.

Operational Services is the District's telephone communication system. Slight increase was noted from the previous year.

Maintenance of Structure shows a slight decrease overall. Electricity costs decreased based on projected lower rates procured by the P3 Power Pool. However, Electrical Maintenance, which is performed every other year, increased as this budget represents the year this service is performed.

Maintenance of Equipment increased in the line items of PC Maintenance and Software Maintenance. Software maintenance costs increased which maintains the new iPad computers as the field devices for the appraisal staff. The PC Maintenance includes maintenance funds on thirty four scanners, and three in house printers for small print jobs. The maintenance on the iPad devices has been added.

Contractual Services decreased slightly due to the Lease of Equipment category which covered the lease payments of the Pen Pad devices and for the orthography updates in GIS.

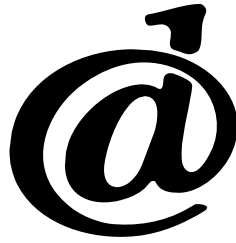
Sundry Expenses noted a slight increase in the categories of Training costs, Dues and Subscriptions, and Recruitment costs. Legal Notice and Advertising also had a slight decrease in projected expenses.

Insurance and Benefits increased in the categories of Group Medical Insurance and Retirement. Group Medical costs are anticipated at a rate of 14% and the Retirement expense was increased to 19% to keep the employee program current. A slight increase was noted for Group Benefits which captures only the premium payments for all ancillary insurance programs and in the Medicare Tax category. Also a slight increase was noted in the General Insurance category.

Professional Services decreased slightly overall from last year due to reduced costs in ARB Compensation service fees. Total number of hearing days and members service were reduced. Lawsuit activity showed a slight decrease from the previous fiscal year but the costs remain constant. A slight increase in the Consultants category was noted for possible lawsuit activity and for new the SOAH hearings, (State Office of Administrative Hearings) which was passed by the Legislature this last session.

Capital Expenditures notes an overall decrease. Funds are budgeted for Equipment in Customer Service and IT including one (1) ST imaging ST Viewcam, one (1) Dell R820 and R720, one (1) Dell MD3220 Disk Array, one (1) Dell MD1220 Disk Array, and one (1) DBA and GIS workstation for IT.

Technology Development and Capital Improvement, includes no requested or budgeted funds for this fiscal year. Capital Improvement projects are funded from surplus funds approved by the Board of Directors upon the approval of the Capital Improvement Plan annually.



Dallas Central Appraisal District 10 Year Budget Analysis

	2005/2006	2006/2007	2007/2008	2008/2009	2009/2010
Budget Amount	\$19,872,073	\$20,373,440	\$20,960,025	\$21,380,063	\$21,799,127
Budget Increase/Decrease	\$527,997	\$501,367	\$586,585	\$420,038	\$419,064
% Budget Increase/Decrease	2.73%	2.52%	2.88%	2.00%	1.96%
Merit Increases	3.00%	3.75%	4.00%	3.50%	3.00%
Entity Salary Survey	3.55%	3.74%	4.23%	3.58%	3.19%
# of Personnel	255	255	255	250	245



Dallas Central Appraisal District 10 Year Budget Analysis

2010/2011	2011/2012	2012/2013	2013/2014	2014/2015
\$21,733,893	\$21,516,555	\$21,516,555	\$21,872,977	\$23,009,832
-\$65,234	-\$217,338	\$0	\$356,422	\$1,136,855
-0.30%	-1.00%	0.00%	1.66%	5.20%
0.00%	0.00%	0.00%	3.00%	3.00%
1.50%	1.09%	1.08%	3.13%	2.92%
240	232	229	229	228

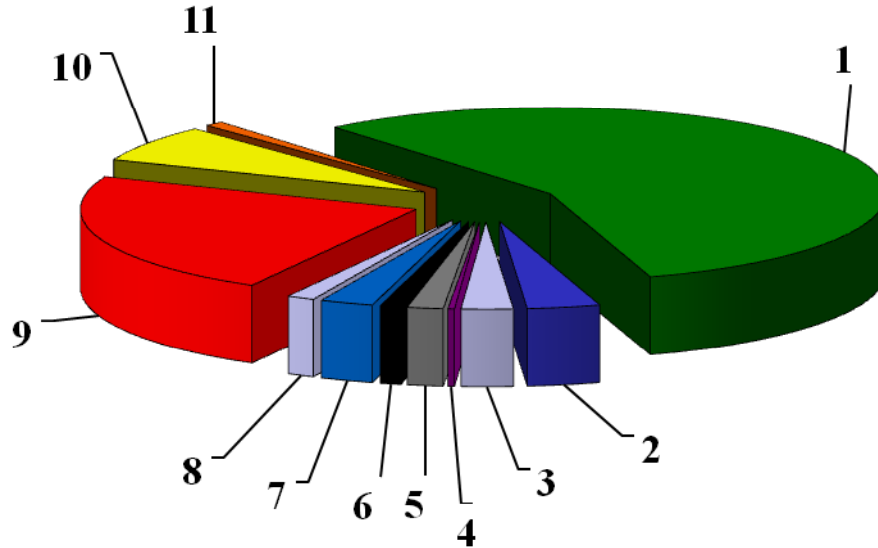
Dallas Central Appraisal District

Proposed Areas Of Change

	2013/2014	2014/2015	Increase or	Percent
	<u>Approved</u>	<u>Proposed</u>	<u>Decrease</u>	<u>Variance</u>
BUDGET EXPENDITURES:				
Salaries & Wages	\$12,315,478	\$12,980,393	\$664,915	5.40%
Auto Expense	\$764,890	\$765,140	\$250	0.03%
Supplies & Materials	\$544,590	\$616,421	\$71,831	13.19%
Operational Services	\$68,500	\$75,000	\$6,500	9.49%
Maintenance of Structure	\$375,934	\$352,928	(\$23,006)	-6.12%
Maintenance of Equipment	\$221,045	\$260,145	\$39,100	17.69%
Contractual Services	\$559,617	\$499,539	(\$60,078)	-10.74%
Sundry Expenses	\$289,358	\$295,704	\$6,346	2.19%
Insurance & Benefits	\$5,030,951	\$5,544,681	\$513,730	10.21%
Professional Services	\$1,505,024	\$1,500,781	(\$4,243)	-0.28%
Capital Expenditures	\$197,590	\$119,100	(\$78,490)	-39.72%
Technology Development	\$0	\$0	\$0	0.00%
Contingency	\$0	\$0	\$0	0.00%
Total Expenditures	<u>\$21,872,977</u>	<u>\$23,009,832</u>	<u>\$1,136,855</u>	<u>5.20%</u>

2014/2015

Budget by Category

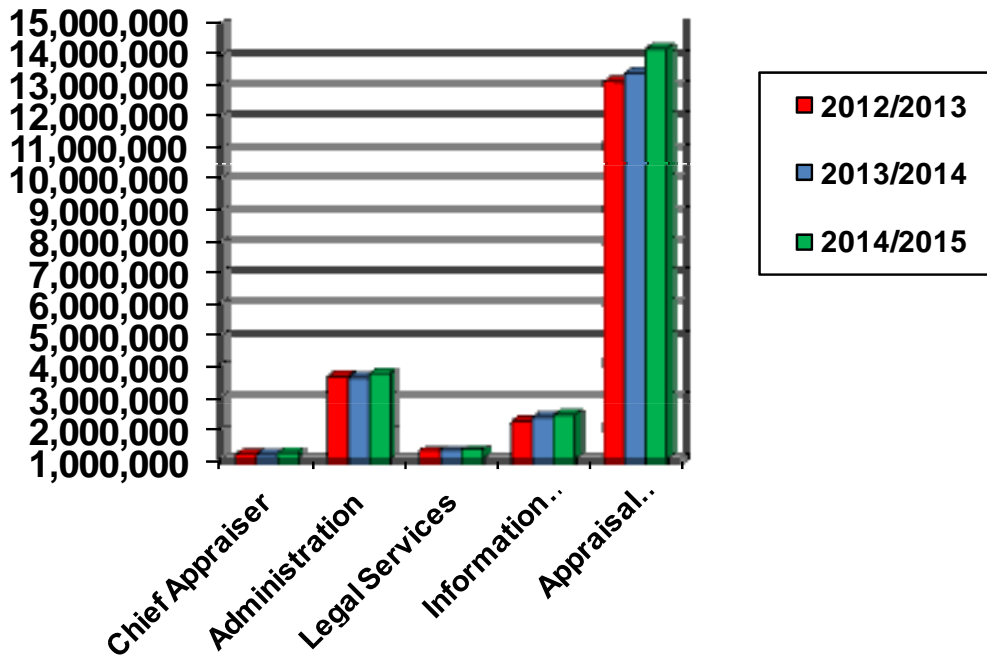


<u>Category</u>	<u>Budget Total</u>	<u>Percent</u>
1 Salaries & Wages	\$12,980,393	56.4%
2 Auto Expenses	765,140	3.3%
3 Supplies & Materials	616,421	2.7%
4 Operational Services	75,000	0.3%
5 Maintenance of Structure	352,928	1.5%
6 Maintenance of Equipment	260,145	1.1%
7 Contractual Services	499,539	2.2%
8 Sundry Expenses	295,704	1.3%
9 Insurance & Benefits	5,544,681	24.1%
10 Professional Services	1,500,781	6.5%
11 Capital Expenditures	119,100	0.5%
Total	\$23,009,832	100%

Dallas Central Appraisal District

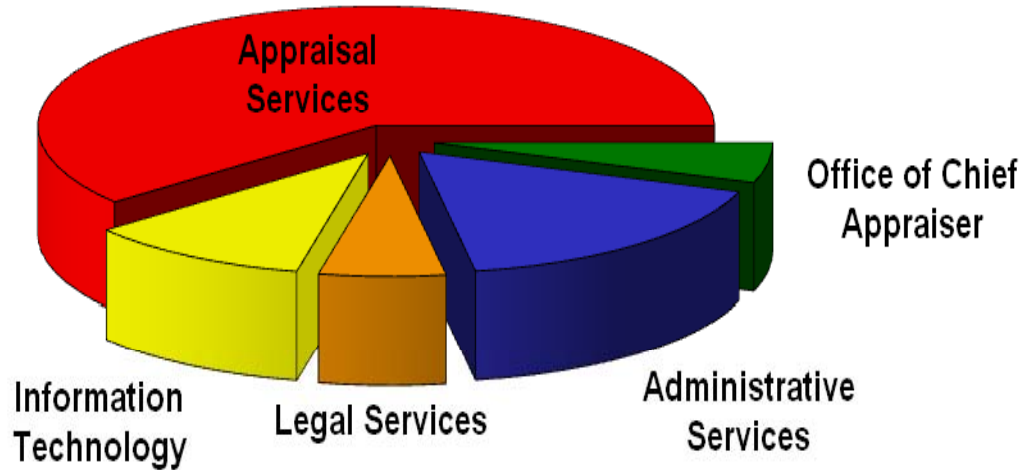
Budget Comparison

<u>Category</u>	<u>2012/2013 Approved</u>	<u>2012/2013 Actual</u>	<u>2013/2014 Approved</u>	<u>2014/2015 Proposed</u>
Consolidated				
Office of Chief Appraiser	\$1,152,841	\$1,103,349	\$1,145,975	\$1,209,012
Consolidated				
Administrative Services	3,655,153	3,913,562	3,616,040	3,745,608
Consolidated				
Legal Services	1,297,337	1,282,037	1,304,260	1,327,816
Consolidated				
Information Technology	2,296,976	2,460,658	2,421,716	2,498,819
Consolidated				
Appraisal Services	13,114,248	13,030,279	13,384,986	14,228,577
Contingency	0	0	0	0
Total	\$21,516,555	\$21,789,885	\$21,872,977	\$23,009,832



2014/2015

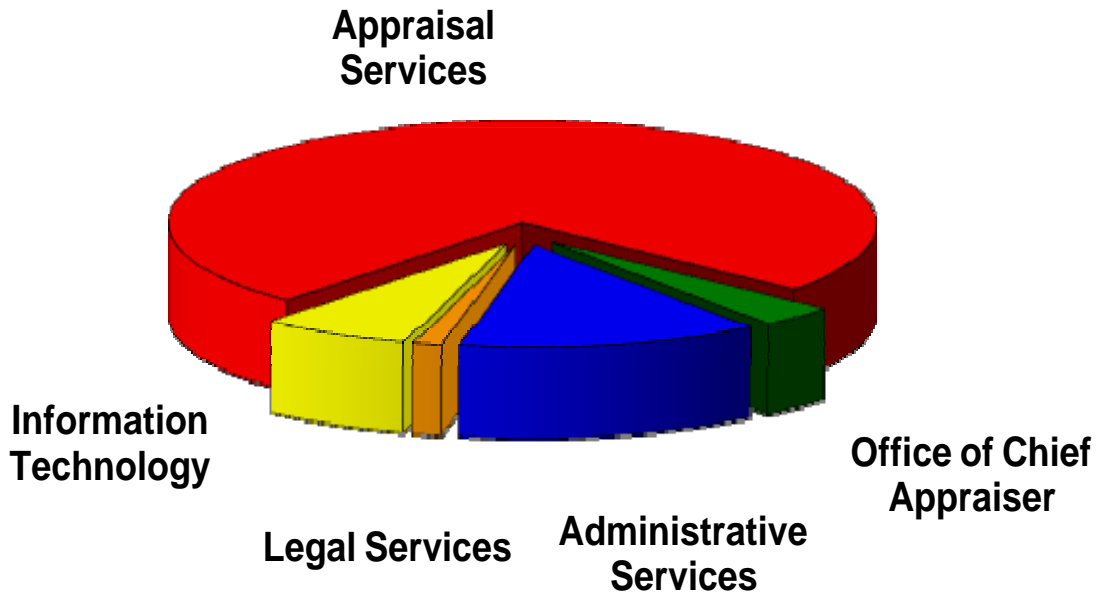
Budget By Department



<u>Department</u>	<u>Budget Total</u>	<u>Percent</u>
Office of Chief Appraiser	\$1,209,012	5.3%
Administrative Services	3,745,608	16.3%
Legal Services	1,327,816	5.8%
Information Technology	2,498,819	10.9%
Appraisal Services	<u>14,228,577</u>	<u>61.8%</u>
Total	\$23,009,832	100%

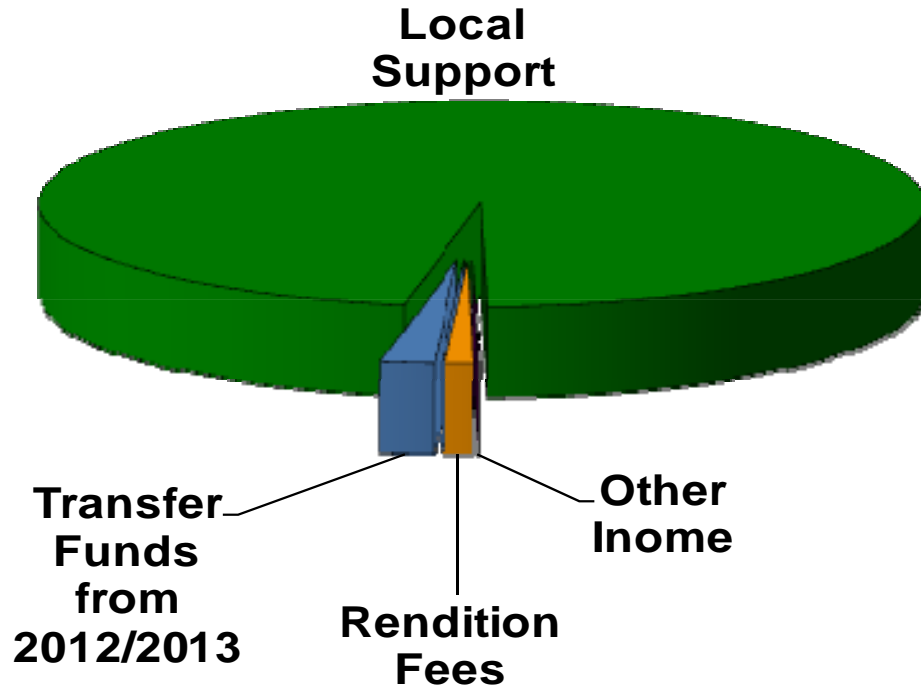
2014/2015

Personnel Breakdown



<u>Department</u>	<u>Number of Personnel</u>	<u>Percent</u>
Office of Chief Appraiser	7	3.1%
Administrative Services	32	14.0%
Legal Services	3	1.3%
Information Technology	15	6.6%
Appraisal Services	<u>171</u>	<u>75.0%</u>
Total	228	100%

2014/2015 Operating Funds Sources



<u>Source</u>	<u>Amount</u>	<u>Percent</u>
Local Support	\$22,339,832	97.09%
Transfer Funds from 2012/2013	430,000	1.87%
Investment Proceeds	0	0.00%
Rendition Fees	230,000	1.00%
Other Income	10,000	0.04%
Total	\$23,009,832	100.00%

Revenue Summary Budget Allocation Comparison

	<u>2013/2014 Approved Allocation</u>	%	<u>2014/2015 Proposed Allocation</u>	%
Local Support				
Municipalities	\$5,595,043	25.86%	\$5,749,805	25.74%
School Districts	\$8,826,942	40.80%	\$9,143,416	40.93%
County/County Wide	\$6,924,253	32.01%	\$7,136,996	31.95%
Special Districts				
Non-County Wide	\$286,739	1.33%	\$309,615	1.39%
Special Districts				
TOTAL	\$21,632,977	100%	\$22,339,832	100%

2014/2015

PROPOSED BUDGET ALLOCATIONS

	<u>2013/2014 Approved Allocation</u>	<u>2014/2015 Proposed Allocation</u>	<u>Increase or (Decrease)</u>	<u>% Change</u>
County/County-wide				
Special Districts:				
Dallas County	2,815,668	2,853,175	37,507	1.33%
D.C.H.D.	3,142,493	3,243,041	100,548	3.20%
D.C.C.C.D.	966,092	1,040,780	74,688	7.73%
Subtotal	6,924,253	7,136,996	212,743	3.07%
Non-County-Wide				
Special Districts:				
Dallas URD	214,059	225,162	11,103	5.19%
Valwood Imp. Authority	23,022	21,946	(1,076)	-4.67%
Irving FCD 1	6,545	6,550	5	0.08%
Irving FCD 3	9,613	10,257	644	6.70%
Dallas FCD1	23,854	36,296	12,442	52.16%
Denton County LID #1	1,835	1,659	(176)	-9.59%
Denton County RUD #1	75	0	(75)	-100.00%
Lancaster MUD #1	1,411	1,414	3	0.21%
Grand Prairie Metro URD	526	545	19	3.61%
Northwest FCD	5,799	5,786	(13)	-0.22%
Subtotal	286,739	309,615	22,876	7.98%

PROPOSED BUDGET ALLOCATIONS

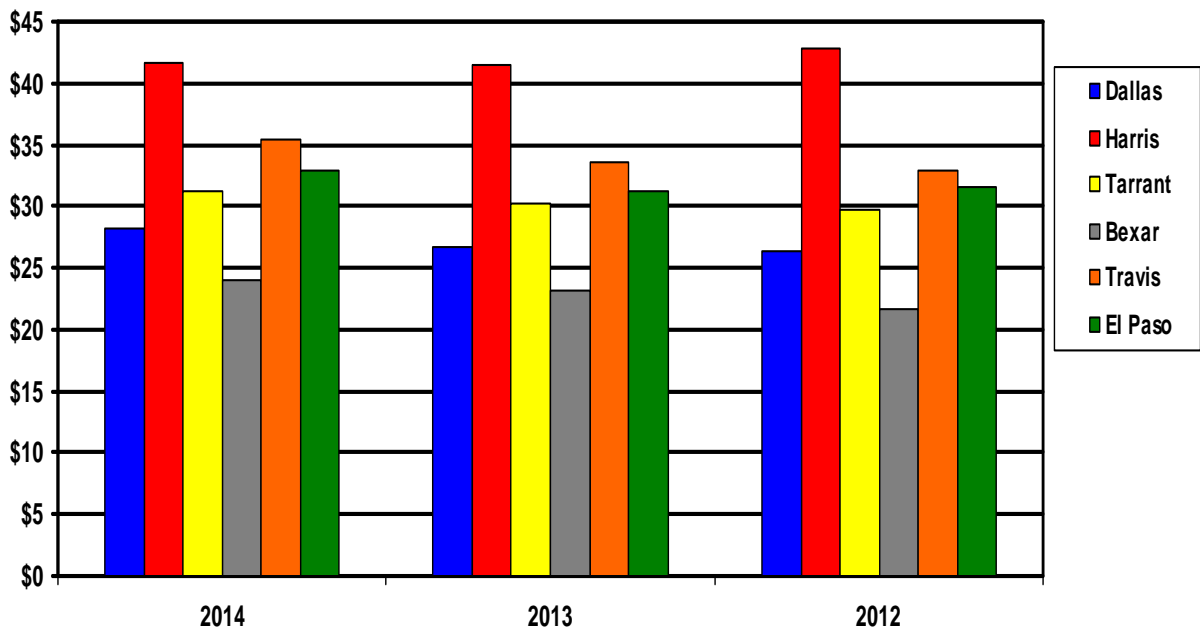
	2013/2014	2014/2015	Increase or	% Change
Cities:	<u>Approved</u>	<u>Proposed</u>	<u>(Decrease)</u>	
	<u>Allocation</u>	<u>Allocation</u>		
Addison	89,236	96,374	7,138	8.00%
Balch Springs	25,527	24,194	(1,333)	-5.22%
Carrollton	140,030	145,834	5,804	4.14%
Cedar Hill	89,279	88,466	(813)	-0.91%
Cockrell Hill	3,483	3,440	(43)	-1.23%
Combine	151	156	5	3.31%
Coppell	159,154	158,188	(966)	-0.61%
Dallas	3,083,651	3,190,128	106,477	3.45%
DeSoto	103,427	105,556	2,129	2.06%
Duncanville	58,777	60,139	1,362	2.32%
Farmers Branch	95,812	105,288	9,476	9.89%
Ferris	346	402	56	16.18%
Garland	344,938	345,642	704	0.20%
Glenn Heights	10,643	10,544	(99)	-0.93%
Grand Prairie	149,527	151,174	1,647	1.10%
Grapevine	2,271	2,279	8	0.35%
Highland Park	47,874	48,813	939	1.96%
Hutchins	8,675	9,115	440	5.07%
Irving	505,563	521,881	16,318	3.23%
Lancaster	62,087	61,591	(496)	-0.80%
Lewisville	1,406	1,452	46	3.27%
Mesquite	175,184	173,648	(1,536)	-0.88%
Ovilla	736	737	1	0.14%
Richardson	199,218	204,342	5,124	2.57%
Rowlett	97,132	95,279	(1,853)	-1.91%
Sachse	30,178	30,539	361	1.20%
Seagoville	15,424	15,750	326	2.11%
Sunnyvale	15,121	15,839	718	4.75%
University Park	76,083	78,078	1,995	2.62%
Wilmer	3,764	4,580	816	21.68%
Wylie	346	357	11	3.18%
Total	5,595,043	5,749,805	154,762	2.77%

PROPOSED BUDGET ALLOCATIONS

	<u>2013/2014</u> <u>Approved</u> <u>Allocation</u>	<u>2014/2015</u> <u>Proposed</u> <u>Allocation</u>	<u>Increase or</u> <u>(Decrease)</u>	<u>% Change</u>
School Districts:				
Carrollton/F.B.	607,080	639,140	32,060	5.28%
Cedar Hill	146,453	154,569	8,116	5.54%
Coppell	421,971	451,337	29,366	6.96%
Dallas	3,949,536	4,116,222	166,686	4.22%
Dallas County Schools	62,813	65,708	2,895	4.61%
DeSoto	118,939	124,068	5,129	4.31%
Duncanville	184,949	187,101	2,152	1.16%
Ferris	903	993	90	9.97%
Garland	662,918	667,640	4,722	0.71%
Grand Prairie	273,248	283,919	10,671	3.91%
Grapevine/Colleyville	11,626	9,729	(1,897)	-16.32%
Highland Park	506,909	525,574	18,665	3.68%
Irving	534,086	549,391	15,305	2.87%
Lancaster	83,329	83,369	40	0.05%
Mesquite	341,419	339,379	(2,040)	-0.60%
Richardson	874,517	896,510	21,993	2.51%
Sunnyvale	46,246	48,767	2,521	5.45%
Wilmer/Hutchins	0	0	0	0.00%
Total	8,826,942	9,143,416	316,474	3.59%

APPRAISAL DISTRICT COMPARISONS

	2014	Real	Personal	Total	Cost Per Parcel		
	<u>Budget Amount</u>	<u>Property</u>	<u>Property</u>	<u>Parcels</u>	<u>2014</u>	<u>2013</u>	<u>2012</u>
Dallas CAD	\$23,009,832	718,294	99,030	817,324	\$28.15	\$26.76	\$26.45
Harris CAD	\$68,676,380	1,466,266	179,873	1,646,139	\$41.72	\$41.48	\$42.75
Tarrant CAD	\$21,059,373	629,311	46,396	675,707	\$31.17	\$30.23	\$29.71
Bexar CAD	\$15,016,438	579,649	44,052	623,701	\$24.08	\$23.12	\$21.70
Travis CAD	\$14,246,848	360,717	41,257	401,974	\$35.44	\$33.53	\$32.84
El Paso CAD	\$13,103,813	376,614	21,333	397,947	\$32.93	\$31.20	\$31.56



APPRAISAL DISTRICT EMPLOYEE COMPARISONS

Appraisal District	2014 Budget	Total Parcels	Number of Employees	Parcels per Employee	Number of Appraisers	Parcels per Appraiser
Dallas Central Appraisal District	\$23,009,832	817,324	228	3,585	95	8,603
Harris Central Appraisal District	\$68,676,380	1,646,139	639	2,576	292	5,637
Tarrant Appraisal District	\$21,059,373	675,707	197	3,430	85	7,949
Bexar Appraisal District	\$15,016,438	623,701	150	4,158	60	10,395
Travis Central Appraisal District	\$14,246,848	401,257	128	3,135	55	7,296
El Paso Central Appraisal District	\$13,103,813	397,947	140	2,842	42	9,475

2013-2014 BUDGET/LEVY COMPARISON

	2013	2014	
	Tax Levy	Budget Amount	Cost As % Of Levy
Dallas CAD	\$4,626,607,251	\$23,009,832	0.50
Harris CAD *	\$7,790,850,852	\$68,676,380	0.88
Tarrant CAD	\$3,205,220,128	\$21,059,373	0.66
Bexar CAD	\$2,550,385,199	\$15,016,438	0.59
Travis CAD	\$2,783,705,249	\$14,246,848	0.51
El Paso CAD	\$947,125,331	\$13,103,813	1.38

* 2012 Tax Levy

ACCURACY OF APPRAISALS

	Median Level of Appraisals	Coefficient of Dispersion
Dallas Central Appraisal District	0.99	7.78
Harris Central Appraisal District *	0.99	11.23
Tarrant Appraisal District*	1.00	7.36
Bexar Appraisal District	0.99	12.87
Travis Central Appraisal District	1.00	6.72
El Paso Central Appraisal District	1.00	10.11

*2011

@

2013/2014 ENTITY SALARY SURVEY

Entity	Contact Person	Title	Increase	Notes
City of Addison	Passion Hayes	Director of Human Resources	6.00%	
City of Balch Springs	Debra Bradshaw	Finance Director	3.00%	
City of Carrollton	Tara Chapman	Administrative Support Assistant	3.00%	
City of Cedar Hill	Jennifer Sweeney	H. R. Generalist	4.00%	
City of Cockrell Hill	Bret Haney	Asst. City Administrator	3.00%	
City of Combine	Ivy Kidd	City Secretary		One out of six employees received \$1500
City of Coppell	Dustin Yater	H.R. Analyst	3.00%	
City of Dallas	Annabelle Eanes	Sr. H.R. Analyst	3.00%	
City of Desoto	Kathleen Shields	H.R. Director	1.00%	
City of Duncanville	Jennifer Otey	Personnel Manager	2.50%	Lump Sum with min. of \$1200 and max. \$1450
City of Farmers Branch	Charles Cox	Director of Finance	3.00%	
City of Ferris	Melissa Garcia	Director of Finance	4.00%	Percentages ranged from 2.67 to 17.6
City of Garland	Daniel Bensinger	H.R. Analyst	3.00%	1% base & 2% lump sum
City of Glenn Heights	Connie Hearne	Management Analyst	0.00%	
City of Grand Prairie	Pat Alexander	Sr. Financial Analyst	3.00%	
City of Grapevine	Gary Livingston	Budget Manager	3.11%	
Town of Highland Park	Bill Pollock	Director of Finance	3.47%	
City of Hutchins	Patti Holloway	Director of Finance	3.00%	
City of Irving	Chelsea Cole	Employee Relations & Comp. Specialist	5.50%	
City of Lancaster	Amanda Pritchett	H.R. Assistant	3.00%	
City of Lewisville	Nancy Davis	Risk Manager	3.00%	
City of Mesquite	Lindsey Rumburg	H.R. Generalist	3.00%	
City of Ovilla	Sharon Jungman	City Accountant	3.00%	
City of Richardson	Robert Clymire	Assistant Budget Officer	4.00%	5% for 48% emp. and 3% for 52%
City of Rowlett	Terri Doby	Budget Officer	1.50%	COLA
City of Sachse	Laura Morrow	H.R. Manager	4.00%	Proposed 2% COLA & 2% Merit
City of Seagoville	Cindy Brown	Director of Human Resources	3.00%	
Town of Sunnyvale	Leslie Malone	Town Secretary	5.00%	
City of University Park	Luanne Hanford	Director of Human Resources	2.00%	
City of Wilmer	Shelia Martin	Interim City Secretary	2.00%	
City of Wylie**	Lynn Fagerstrom	H.R. Manager		call back after Dec. 1
Average			3.11%	

Entity	Contact Person	Title	Increase	Notes
C/FB ISD	Dr. Bobby Burns	Superintendent	2.50%	
Cedar Hill ISD	Rosa Johnson	Staffing Specialist	3.00%	
Coppell ISD	Vicky Cason	Admin. Asst.	3.00%	
Dallas ISD	Kristian Coopwood	Compensation Analyst	2.00%	
DeSoto ISD	Sue Land	Position Control Coordinator	1.00%	
Duncanville ISD	Ronald Kuehler	CFO	3.50%	
Ferris	Ron Smith	Business Manager	2.50%	
Garland ISD	Christie Godfrey	Secretary to Exec. Director of H.R.	3.00%	
Grand Prairie ISD	Nancy Bridges	Sr. Executive Director of H.R.	2.00%	
Grapevine/Colleyville	DaiAnn Mooney	CFO	2.00%	
Highland Park ISD	Rita Bryan	Personnel/Certification Specialist	2.00%	
Irving ISD	Mia Stroy	Compensation & Benefits Manager	2.61%	
Lancaster ISD	Ted Warren	Executive Director of Finance	2.50%	
Mesquite ISD	Richard Koonce	Asst. Superintendent	4.00%	
Richardson ISD	Barbara Hargrove	Director of Salary Administration	5.00%	
Sunnyvale ISD	Margaret Davis	Business Manager	3.50%	
Average			2.76%	

Dallas County	James Sparkman	H.R. Analyst IV	2.00%	2% across board & 2% applied to salary schedule
DCCCD	John Robertson	Associate Vice Chancellor of Business	1.00%	
Average			1.50%	

Total Average Approved Increase for All Entities			2.92%	
---	--	--	--------------	--

2014/2015 Dallas Central Appraisal District Proposed Budget Allocation Analysis

ENTITY and ENTITY CODE		2012 Grand Total Taxable Value 9/2012	2013 Grand Total Taxable Value 9/2013	Taxable Value Change	Taxable Value Percent Change	2012 Tax Rates	2013 Tax Rates	Tax Rate Change	Tax Rate Percent Change	2012 Levy	2013 Levy	Levy Change	Levy Percent Change	2013/2014 Approved Budget Allocation	2014/2015 Proposed Budget Allocation	Budget Allocation Change	Budget Allocation Percent Change
CITIES																	
Addison	CA	\$3,139,592,071	\$3,490,355,617	\$350,763,546	11.17%	0.580000	0.571800	(0.008200)	(1.41%)	\$18,209,634	\$19,957,853	\$1,748,219	9.60%	\$89,236	\$96,374	7,138	8.00%
Barcl Springs	CB	648,527,967	650,571,666	2,043,699	0.32%	0.803000	0.770000	(0.033000)	(4.11%)	5,207,680	5,009,402	(198,278)	(3.81%)	25,527	24,194	(1,333)	(5.22%)
Carrollton - Dallas Co.	CC	4,624,943,981	4,888,397,168	263,453,187	5.70%	0.617875	0.617875	0.000000	0.00%	28,576,373	30,204,184	1,627,811	5.70%	140,030	145,834	5,804	4.14%
Cedar Hill - Dallas Co.	CH	2,619,103,538	2,621,973,307	2,869,769	0.11%	0.695690	0.698760	0.003070	0.44%	18,220,841	18,321,301	100,459	0.55%	89,279	88,466	(813)	(0.91%)
Cockrell Hill	CL	86,249,254	87,909,776	1,660,522	1.93%	0.823145	0.811905	(0.011240)	(1.37%)	709,956	713,744	3,787	0.53%	3,483	3,440	(43)	(1.23%)
Combine	OM	11,626,311	11,589,034	(37,277)	(0.32%)	0.250000	0.270000	0.020000	8.00%	29,066	31,290	2,225	7.65%	151	156	5	3.31%
Coppell - Dallas Co	CO	4,844,244,864	5,138,837,097	294,592,233	6.08%	0.670460	0.637500	(0.032960)	(4.92%)	32,478,724	32,760,086	281,362	0.87%	159,154	158,188	(966)	(0.61%)
Dallas	DA	78,959,838,261	82,896,070,607	3,936,232,346	4.99%	0.797000	0.797000	0.000000	0.00%	629,309,911	660,681,683	31,371,772	4.99%	3,083,651	3,190,128	106,477	3.45%
DeSoto	CS	2,786,797,542	2,886,025,550	99,228,008	3.56%	0.757400	0.757400	0.000000	0.00%	21,107,205	21,858,758	751,553	3.56%	103,427	105,556	2,129	2.06%
Duncanville	CV	1,626,293,054	1,642,075,787	15,782,733	0.97%	0.737692	0.758447	0.020755	2.81%	11,997,034	12,454,275	457,241	3.81%	58,777	60,139	1,362	2.32%
Farmers Branch	CF	3,692,382,761	3,942,109,808	249,727,047	6.76%	0.529500	0.553100	0.023600	4.46%	19,551,167	21,803,809	2,252,643	11.52%	95,812	105,288	9,476	9.89%
Ferris	FE	10,128,860	12,418,461	2,289,601	22.60%	0.687134	0.687134	0.000000	0.00%	69,599	85,331	15,733	22.60%	346	402	56	16.18%
Garland - Dallas Co	CG	9,990,630,274	10,159,649,141	169,018,867	1.69%	0.704600	0.704600	0.000000	0.00%	70,393,981	71,584,888	1,190,907	1.69%	344,938	345,642	704	0.20%
Glenn Heights - Dallas Co	CE	273,240,255	274,663,105	1,422,850	0.52%	0.795000	0.795000	0.000000	0.00%	2,172,260	2,183,572	11,312	0.52%	10,643	10,544	(99)	(0.93%)
Grand Prairie - Dallas Co	CP	4,554,693,319	4,672,879,002	118,185,683	2.59%	0.669998	0.669998	0.000000	0.00%	30,516,354	31,308,196	791,842	2.59%	149,527	151,174	1,647	1.10%
Grapevine	GV	134,625,698	137,323,415	2,697,717	2.00%	0.345695	0.342500	(0.003195)	(0.92%)	465,394	470,333	4,938	1.06%	2,271	2,279	8	0.35%
Highland Park	TH	4,441,054,562	4,594,079,983	153,025,421	3.45%	0.220000	0.220000	0.000000	0.00%	9,770,320	10,106,976	336,656	3.45%	47,874	48,813	939	1.96%
Hutchins	CU	268,044,212	273,264,544	5,220,332	1.95%	0.660907	0.690907	0.030000	4.54%	1,771,523	1,888,004	116,481	6.58%	8,675	9,115	440	5.07%
Irving	CI	17,235,766,413	18,055,855,517	820,089,104	4.76%	0.598600	0.598600	0.000000	0.00%	103,173,298	108,082,351	4,909,053	4.76%	505,563	521,881	16,318	3.23%
Lancaster	CN	1,460,608,442	1,470,183,673	9,575,231	0.66%	0.867500	0.867500	0.000000	0.00%	12,670,778	12,753,843	83,065	0.66%	62,087	61,591	(496)	(0.80%)
Lewisville	LE	65,516,151	68,063,254	2,547,103	3.89%	0.440210	0.440210	0.000000	0.00%	288,409	299,621	11,213	3.89%	1,406	1,452	46	3.27%
Mesquite - Dallas Co	CM	5,585,976,392	5,619,343,068	33,366,676	0.60%	0.640000	0.640000	0.000000	0.00%	35,750,249	35,963,796	213,547	0.60%	175,184	173,648	(1,536)	(0.88%)
Ovilla	OV	22,749,379	22,515,567	(233,812)	(1.03%)	0.667500	0.671900	0.004400	0.66%	151,852	151,282	(570)	(0.38%)	736	737	1	0.14%
Richardson	CR	6,400,603,215	6,662,810,168	262,206,953	4.10%	0.635160	0.635160	0.000000	0.00%	40,654,071	42,319,505	1,665,434	4.10%	199,218	204,342	5,124	2.57%
Rowlett - Dallas Co	CW	2,653,131,611	2,640,850,402	(12,281,209)	(0.46%)	0.747173	0.747173	0.000000	0.00%	19,823,483	19,731,721	(91,762)	(0.46%)	97,132	95,279	(1,853)	(1.91%)
Sachse	CK	798,830,517	820,519,950	21,689,433	2.72%	0.770819	0.770819	0.000000	0.00%	6,157,537	6,324,724	167,186	2.72%	30,178	30,539	361	1.20%
Seagoville - Dallas Co	CJ	455,436,461	456,887,839	1,451,378	0.32%	0.690853	0.713794	0.022941	3.32%	3,146,396	3,261,238	114,842	3.65%	15,424	15,750	326	2.11%
Sunnyvale	TS	756,254,491	804,115,737	47,861,246	6.33%	0.407962	0.407962	0.000000	0.00%	3,085,231	3,280,487	195,256	6.33%	15,121	15,839	718	4.75%
University Park	CQ	5,576,230,778	5,894,852,538	318,621,760	5.71%	0.278450	0.274320	(0.004130)	(1.48%)	15,527,015	16,170,759	643,745	4.15%	76,083	78,078	1,995	2.62%
Wilmer	CT	208,946,098	244,053,999	35,107,901	16.80%	0.366818	0.389438	0.022620	6.17%	766,452	950,439	183,987	24.01%	3,764	4,580	816	21.68%
Wylie	WY	8,172,787	8,521,284	348,497	4.26%	0.888900	0.883900	(0.005000)	(0.56%)	72,648	75,320	2,672	3.68%	346	357	11	3.18%
COUNTYWIDE ENTITIES																	
Dallas County	DC	157,908,256,062	165,164,823,816	7,256,567,754	4.60%	0.243100	0.243100	0.000000	0.00%	383,874,970	401,515,687	17,640,716	4.60%	2,815,668	2,853,175	37,507	1.33%
Dallas Co Community College	DO	165,159,472,596	172,852,243,507	7,692,770,911	4.66%	0.119375	0.124700	0.005325	4.46%	197,159,120	215,546,748	18,387,627	9.33%	966,092	1,040,780	74,688	7.73%
Parkland Hospital	PH	158,093,223,620	165,355,034,790	7,261,811,170	4.59%	0.271000	0.276000	0.005000	1.85%	428,432,636	456,379,896	27,947,260	6.52%	3,142,493	3,243,041	100,548	3.20%
SCHOOL DISTRICTS																	
Carrollton/Farmers Branch ISD	AS	11,397,326,225	12,138,397,348	741,071,123	6.50%	1.330600	1.323500	(0.007100)	(0.53%)	151,652,823	160,651,689	8,998,866	5.93%	607,080	639,140	32,060	5.28%
Cedar Hill ISD	ES	2,540,617,628	2,547,666,194	7,048,566	0.28%	1.440000	1.525000	0.085000	5.90%	36,584,894	38,851,909	2,267,016	6.20%	146,453	154,569	8,116	5.54%
Coppell ISD	OS	7,429,613,113	7,920,021,426	490,408,313	6.60%	1.418800	1.432400	0.013600	0.96%	105,411,351	113,446,387	8,035,036	7.62%	421,971	451,337	29,366	6.96%
Dallas ISD	DS	76,461,684,502	80,699,597,540	4,237,913,038	5.54%	1.290347	1.282085	(0.008262)	(0.64%)	986,621,052	1,034,637,435	48,016,383	4.87%	3,949,536	4,116,219	166,683	4.22%
DeSoto ISD	SS	2,063,314,339	2,092,966,735	29,652,396	1.44%	1.440000	1.490000	0.050000	3.47%	29,711,726	31,185,204	1,473,478	4.96%	118,939	124,068	5,129	4.31%
Duncanville ISD	US	3,230,870,008	3,335,394,098	104,524,090	3.24%	1.430000	1.410000	(0.020000)	(1.40%)	46,201,441	47,029,057	827,616	1.79%	184,949	187,101	2,152	1.16%
Ferris ISD	FS	17,215,353	19,061,981	1,846,628	10.73%	1.310000	1.310000	0.000000	0.00%	225,521	249,712	24,191	10.73%	903	993	90	9.97%
Garland ISD	GS	13,213,222,270	13,389,896,468	176,674,198	1.34%	1.253300	1.253300	0.000000	0.00%	165,601,315	167,815,572	2,214,258	1.34%	662,918	667,640	4,722	0.71%
Grand Prairie ISD	PS	4,659,327,959	4,871,313,438	211,985,479	4.55%	1.465000	1.465000	0.000000	0.00%	68,259,155	71,364,742	3,105,587	4.55%	273,248	283,919	10,671	3.91%
Grapevine-Colleyville ISD	VS	219,994,374	185,237,898	(34,756,476)	(15.80%)	1.320100	1.320100	0.000000	0.00%	2,904,146	2,445,325	(458,820)	(15.80%)	11,626	9,729	(1,897)	(16.32%)
Highland Park ISD	HS	11,164,646,462	11,725,071,940	560,425,478	5.02%	1.134200	1.126700	(0.007500)	(0.66%)	126,629,420	132,106,386	5,476,965	4.33%	506,909	525,574	18,665	3.68%
Irving ISD	IS	9,107,044,610	9,426,128,696	319,084,086	3.50%	1.465000	1.465000	0.000000	0.00%	133,418,204	138,092,785	4,674,582	3.50%	534,086	549,391	15,305	2.87%
Lancaster ISD	LS	1,467,995,765	1,477,801,521	9,805,756	0.67%	1.418000	1.418000	0.000000	0.00%	20,816,180	20,955,226	139,046	0.67%	83,329	83,369	40	0.05%
Mesquite ISD	MS	6,006,250,091	6,050,008,560	43,758,469	0.73%	1.420000	1.410000	(0.010000)	(0.70%)	85,288,751	85,305,121	16,369	0.02%	341,419	339,379	(2,040)	(0.60%)
Richardson ISD	RS	16,302,401,300	16,816,036,626	513,635,326	3.15%	1.340050	1.340050	0.000000	0.00%	218,460,329	225,343,299	6,882,970	3.15%	874,517	896,510	21,993	2.51%
Sunnyvale ISD	YS	819,332,967	869,360,937	50,027,970	6.11%	1.410000	1.410000	0.000000	0.00%	11,552,595	12,257,989	705,394	6.11%	46,246	48,767	2,521	5.45%
Dallas County Schools		157,908,256,062	165,164,8														

2014/2015 Dallas Central Appraisal District Proposed Budget Allocation Analysis

ENTITY and ENTITY CODE		2012 Grand Total Taxable Value 9/2012	2013 Grand Total Taxable Value 9/2013	Taxable Value Change	Taxable Value Percent Change	2012 Tax Rates	2013 Tax Rates	Tax Rate Change	Tax Rate Percent Change	2012 Levy	2013 Levy	Levy Change	Levy Percent Change	2013/2014 Approved Budget Allocation	2014/2015 Proposed Budget Allocation	Budget Allocation Change	Budget Allocation Percent Change
SPECIAL DISTRICTS																	
Dallas County FCD #1	DD	159,610,993	273,346,590	113,735,597	71.26%	3.050000	2.750000	(0.300000)	(9.84%)	4,868,135	7,517,031	2,648,896	54.41%	23,854	36,296	12,442	52.16%
Dallas County URD	DM	2,374,180,413	2,603,645,344	229,464,931	9.67%	1.840000	1.791000	(0.049000)	(2.66%)	43,684,920	46,631,288	2,946,369	6.74%	214,059	225,162	11,103	5.19%
Denton Co. LID #1	NL	180,885,565	185,744,358	4,858,793	2.69%	0.207000	0.185000	(0.022000)	(10.63%)	374,433	343,627	(30,806)	(8.23%)	1,835	1,659	(176)	(9.59%)
Denton Co. RUD #1	NR	152,908,947	156,805,121	3,896,174	2.55%	0.010000	0.000000	(0.010000)	#####	15,291	0	(15,291)	(100.00%)	75	0	(75)	(100.00%)
Grand Prairie Metro URD	GU	17,907,674	18,815,591	907,917	5.07%	0.600000	0.600000	0.000000	0.00%	107,446	112,894	5,448	5.07%	526	545	19	3.61%
Irving FCD, Section I	IF	287,063,256	271,297,891	(15,765,365)	(5.49%)	0.465300	0.500000	0.034700	7.46%	1,335,705	1,356,489	20,784	1.56%	6,545	6,550	5	0.08%
Irving FCD, Section III	ID	1,411,311,957	1,494,958,655	83,646,698	5.93%	0.139000	0.142100	0.003100	2.23%	1,961,724	2,124,336	162,613	8.29%	9,613	10,257	644	6.70%
Lancaster MUD #1	LM	27,158,258	27,629,454	471,196	1.74%	1.060000	1.060000	0.000000	0.00%	287,878	292,872	4,995	1.74%	1,411	1,414	3	0.21%
Northwest Dallas Co FCD	NF	394,482,142	399,399,238	4,917,096	1.25%	0.300000	0.300000	0.000000	0.00%	1,183,446	1,198,198	14,751	1.25%	5,799	5,786	(13)	(0.22%)
Valwood Improvement Auth.	FF	1,527,913,950	1,567,273,984	39,360,034	2.58%	0.307500	0.290000	(0.017500)	(5.69%)	4,698,335	4,545,095	(153,241)	(3.26%)	23,022	21,946	(1,076)	(4.67%)

DALLAS CENTRAL APPRAISAL DISTRICT 2014 PRELIMINARY ESTIMATED REAPPRAISAL PLAN - As of February 201.

ENTITY	RESIDENTIAL			COMMERCIAL			BPP			TOTAL OF ALL DIVISIONS		
	ACCOUNTS REAPPRAISED	TOTAL NUMBER OF ACCOUNTS	PERCENT REAPPRAISED	ACCOUNTS REAPPRAISED	TOTAL NUMBER OF ACCOUNTS	PERCENT REAPPRAISED	ACCOUNTS REAPPRAISED	TOTAL NUMBER OF ACCOUNTS	PERCENT REAPPRAISED	ACCOUNTS REAPPRAISED	TOTAL NUMBER OF ACCOUNTS	PERCENT REAPPRAISED
<u>CITIES</u>												
Addison	1,387	2,349	59.05%	688	689	99.85%	2,970	2,970	100.00%	5,045	6,008	83.97%
Balch Springs	2,700	6,764	39.92%	626	952	65.76%	736	736	100.00%	4,062	8,452	48.06%
Carrollton	7,532	12,259	61.44%	1,398	1,781	78.50%	3,511	3,511	100.00%	12,441	17,551	70.88%
Cedar Hill	9,279	16,207	57.25%	677	1,205	56.18%	1,225	1,225	100.00%	11,181	18,637	59.99%
Cockrell Hill	930	930	100.00%	0	103	0.00%	166	166	100.00%	1,096	1,199	91.41%
Combine	203	326	62.27%	75	75	100.00%	15	15	100.00%	293	416	70.43%
Coppell	7,491	11,752	63.74%	669	971	68.90%	1,489	1,489	100.00%	9,649	14,212	67.89%
Dallas	148,274	291,459	50.87%	19,112	39,083	48.90%	47,593	47,593	100.00%	214,979	378,135	56.85%
Desoto	8,705	16,631	52.34%	589	1,284	45.87%	1,282	1,282	100.00%	10,576	19,197	55.09%
Duncanville	7,609	11,962	63.61%	804	1,114	72.17%	1,391	1,391	100.00%	9,804	14,467	67.77%
Farmers Branch	5,684	8,081	70.34%	592	1,235	47.94%	3,033	3,033	100.00%	9,309	12,349	75.38%
Ferris	0	0	0.00%	15	15	100.00%	6	6	100.00%	21	21	100.00%
Garland	30,254	64,402	46.98%	2,651	4,688	56.55%	5,664	5,664	100.00%	38,569	74,754	51.59%
Glenn Heights	1,759	3,160	55.66%	0	198	0.00%	80	80	100.00%	1,839	3,438	53.49%
Grand Prairie	13,932	35,825	38.89%	942	4,272	22.05%	2,780	2,780	100.00%	17,654	42,877	41.17%
Grapevine	0	0	0.00%	28	28	100.00%	81	81	100.00%	109	109	100.00%
Highland Park	2,639	3,400	77.62%	72	80	90.00%	343	343	100.00%	3,054	3,823	79.88%
Hutchins	28	1,332	2.10%	68	392	17.35%	276	276	100.00%	372	2,000	18.60%
Irving	21,903	43,498	50.35%	2,230	5,541	40.25%	8,022	8,022	100.00%	32,155	57,061	56.35%
Lancaster	5,522	12,729	43.38%	563	1,568	35.91%	808	808	100.00%	6,893	15,105	45.63%
Lewisville	85	299	28.43%	10	10	100.00%	15	15	100.00%	110	324	33.95%
Mesquite	17,422	38,182	45.63%	756	2,618	28.88%	3,119	3,119	100.00%	21,297	43,919	48.49%
Ovilla	79	162	48.77%	0	23	0.00%	5	5	100.00%	84	190	44.21%
Richardson	12,535	21,496	58.31%	1,074	1,617	66.42%	4,474	4,474	100.00%	18,083	27,587	65.55%
Rowlett	6,652	17,367	38.30%	477	1,025	46.54%	940	940	100.00%	8,069	19,332	41.74%
Sachse	2,464	5,277	46.69%	47	315	14.92%	265	265	100.00%	2,776	5,857	47.40%
Seagoville	2,365	4,901	48.26%	789	790	99.87%	440	440	100.00%	3,594	6,131	58.62%
Sunnyvale	1,459	2,209	66.05%	239	623	38.36%	426	426	100.00%	2,124	3,258	65.19%
University Park	6,386	6,927	92.19%	216	318	67.92%	774	774	100.00%	7,376	8,019	91.98%
Wilmer	752	1,495	50.30%	233	234	99.57%	141	141	100.00%	1,126	1,870	60.21%
Wylie	181	197	91.88%	1	16	6.25%	12	12	100.00%	194	225	86.22%
Total Cities	326,211	641,578	50.85%	35,641	72,863	48.92%	92,082	92,082	100.00%	453,934	806,523	56.28%
<u>SCHOOLS</u>												
Carrollton/Farmers Branch	15,680	23,255	67.43%	2,174	3,493	62.24%	5,834	5,834	100.00%	23,688	32,582	72.70%
Cedar Hill	9,799	16,872	58.08%	679	1,276	53.21%	1,201	1,201	100.00%	11,679	19,349	60.36%
Coppell	9,831	14,252	68.98%	867	1,358	63.84%	2,250	2,250	100.00%	12,948	17,860	72.50%
Dallas	131,446	268,742	48.91%	20,426	39,811	51.31%	47,370	47,370	100.00%	199,242	355,923	55.98%
Desoto	8,872	18,577	47.76%	362	1,122	32.26%	932	932	100.00%	10,166	20,631	49.28%
Duncanville	13,439	20,527	65.47%	980	2,208	44.38%	1,913	1,913	100.00%	16,332	24,648	66.26%
Ferris	114	114	100.00%	96	97	98.97%	15	15	100.00%	225	226	99.56%
Garland	37,452	82,717	45.28%	3,072	6,124	50.16%	6,474	6,474	100.00%	46,998	95,315	49.31%
Grand Prairie	13,199	34,431	38.33%	852	4,196	20.31%	2,831	2,831	100.00%	16,882	41,458	40.72%
Grapevine-Colleyville	0	0	0.00%	2	18	11.11%	144	144	100.00%	146	162	90.12%
Highland Park	8,961	10,740	83.44%	339	482	70.33%	1,884	1,884	100.00%	11,184	13,106	85.33%
Irving	15,350	36,109	42.51%	2,450	4,972	49.28%	5,704	5,704	100.00%	23,504	46,785	50.24%
Lancaster	6,032	13,079	46.12%	709	1,740	40.75%	802	802	100.00%	7,543	15,621	48.29%
Mesquite	19,852	46,788	42.43%	1,091	3,258	33.49%	3,456	3,456	100.00%	24,399	53,502	45.60%
Richardson	35,650	56,878	62.68%	2,296	3,394	67.65%	9,426	9,426	100.00%	47,372	69,698	67.97%
Sunnyvale	1,459	2,209	66.05%	251	636	39.47%	426	426	100.00%	2,136	3,271	65.30%
Total Schools	327,136	645,290	50.70%	36,646	74,185	49.40%	90,662	90,662	100.00%	454,444	810,137	56.09%

DALLAS CENTRAL APPRAISAL DISTRICT 2013 ESTIMATED REAPPRAISAL PLAN

ENTITY	RESIDENTIAL			COMMERCIAL			BPP			TOTAL OF ALL DIVISIONS		
	ACCOUNTS REAPPRAISED	TOTAL NUMBER OF ACCOUNTS	PERCENT REAPPRAISED	ACCOUNTS REAPPRAISED	TOTAL NUMBER OF ACCOUNTS	PERCENT REAPPRAISED	ACCOUNTS REAPPRAISED	TOTAL NUMBER OF ACCOUNTS	PERCENT REAPPRAISED	ACCOUNTS REAPPRAISED	TOTAL NUMBER OF ACCOUNTS	PERCENT REAPPRAISED
CITIES												
Addison	1,040	2,351	44.24%	364	687	52.98%	3,040	3,040	100.00%	4,444	6,078	73.12%
Balch Springs	2,274	6,764	33.62%	0	946	0.00%	736	736	100.00%	3,010	8,446	35.64%
Carrollton	4,850	12,259	39.56%	943	1,771	53.25%	3,495	3,495	100.00%	9,288	17,525	53.00%
Cedar Hill	5,500	16,172	34.01%	363	1,202	30.20%	1,173	1,173	100.00%	7,036	18,547	37.94%
Cockrell Hill	0	930	0.00%	107	108	99.07%	161	161	100.00%	268	1,199	22.35%
Combine	5	326	1.53%	75	75	100.00%	17	17	100.00%	97	418	23.21%
Coppell	5,410	11,727	46.13%	443	984	45.02%	1,472	1,472	100.00%	7,325	14,183	51.65%
Dallas	102,083	291,391	35.03%	17,368	39,103	44.42%	46,848	46,848	100.00%	166,299	377,342	44.07%
Desoto	6,087	16,632	36.60%	697	1,286	54.20%	1,270	1,270	100.00%	8,054	19,188	41.97%
Duncanville	4,411	11,964	36.87%	352	1,115	31.57%	1,325	1,325	100.00%	6,088	14,404	42.27%
Farmers Branch	3,392	8,082	41.97%	872	1,245	70.04%	3,110	3,110	100.00%	7,374	12,437	59.29%
Ferris	0	0	0.00%	13	13	100.00%	5	5	100.00%	18	18	100.00%
Garland	24,556	64,243	38.22%	2,710	4,682	57.88%	5,603	5,603	100.00%	32,869	74,528	44.10%
Glenn Heights	1,507	3,181	47.38%	0	199	0.00%	74	74	100.00%	1,581	3,454	45.77%
Grand Prairie	13,526	35,781	37.80%	1,824	4,254	42.88%	2,741	2,741	100.00%	18,091	42,776	42.29%
Grapevine	0	0	0.00%	29	29	100.00%	76	76	100.00%	105	105	100.00%
Highland Park	1,793	3,396	52.80%	34	83	40.96%	366	366	100.00%	2,193	3,845	57.04%
Hutchins	119	1,298	9.17%	384	390	98.46%	299	299	100.00%	802	1,987	40.36%
Irving	13,763	42,991	32.01%	2,311	5,521	41.86%	7,949	7,949	100.00%	24,023	56,461	42.55%
Lancaster	4,886	12,736	38.36%	616	1,562	39.44%	821	821	100.00%	6,323	15,119	41.82%
Lewisville	0	293	0.00%	10	10	100.00%	14	14	100.00%	24	317	7.57%
Mesquite	11,880	38,184	31.11%	991	2,608	38.00%	3,096	3,096	100.00%	15,967	43,888	36.38%
Ovilla	0	162	0.00%	0	23	0.00%	5	5	100.00%	5	190	2.63%
Richardson	13,443	21,464	62.63%	870	1,626	53.51%	4,426	4,426	100.00%	18,739	27,516	68.10%
Rowlett	6,347	17,257	36.78%	447	1,027	43.52%	911	911	100.00%	7,705	19,195	40.14%
Sachse	1,971	5,220	37.76%	48	321	14.95%	255	255	100.00%	2,274	5,796	39.23%
Seagoville	2,177	4,891	44.51%	66	784	8.42%	441	441	100.00%	2,684	6,116	43.88%
Sunnyvale	505	2,205	22.90%	193	613	31.48%	403	403	100.00%	1,101	3,221	34.18%
University Park	4,957	6,904	71.80%	251	321	78.19%	761	761	100.00%	5,969	7,986	74.74%
Wilmer	219	1,463	14.97%	11	229	4.80%	127	127	100.00%	357	1,819	19.63%
Wylie	0	193	0.00%	16	16	100.00%	13	13	100.00%	29	222	13.06%
Total Cities	236,701	640,460	36.96%	32,408	72,833	44.50%	91,033	91,033	100.00%	360,142	804,326	44.78%
SCHOOLS												
Carrollton/Farmers Branch	10,235	23,018	44.47%	2,237	3,496	63.99%	5,827	5,827	100.00%	18,299	32,341	56.58%
Cedar Hill	5,978	16,837	35.51%	373	1,273	29.30%	1,156	1,156	100.00%	7,507	19,266	38.97%
Coppell	6,060	14,082	43.03%	719	1,363	52.75%	2,197	2,197	100.00%	8,976	17,642	50.88%
Dallas	88,733	268,620	33.03%	17,212	39,807	43.24%	46,960	46,960	100.00%	152,905	355,387	43.02%
Desoto	7,288	18,598	39.19%	547	1,124	48.67%	897	897	100.00%	8,732	20,619	42.35%
Duncanville	6,494	20,531	31.63%	1,015	2,205	46.03%	1,835	1,835	100.00%	9,344	24,571	38.03%
Ferris	0	113	0.00%	97	97	100.00%	15	15	100.00%	112	225	49.78%
Garland	30,660	82,386	37.22%	3,206	6,132	52.28%	6,340	6,340	100.00%	40,206	94,858	42.39%
Grand Prairie	13,123	34,390	38.16%	1,821	4,183	43.53%	2,778	2,778	100.00%	17,722	41,351	42.86%
Grapevine-Colleyville	0	0	0.00%	18	18	100.00%	137	137	100.00%	155	155	100.00%
Highland Park	7,064	10,713	65.94%	379	492	77.03%	1,872	1,872	100.00%	9,315	13,077	71.23%
Irving	10,388	35,981	28.87%	1,293	4,961	26.06%	5,705	5,705	100.00%	17,386	46,647	37.27%
Lancaster	5,605	13,084	42.84%	664	1,734	38.29%	830	830	100.00%	7,099	15,648	45.37%
Mesquite	13,663	46,777	29.21%	989	3,242	30.51%	3,426	3,426	100.00%	18,078	53,445	33.83%
Richardson	31,623	56,828	55.65%	1,767	3,401	51.96%	9,257	9,257	100.00%	42,647	69,486	61.37%
Sunnyvale	505	2,205	22.90%	194	626	30.99%	403	403	100.00%	1,102	3,234	34.08%
Total Schools	237,419	644,163	36.86%	32,531	74,154	43.87%	89,635	89,635	100.00%	359,585	807,952	44.51%

DALLAS CENTRAL APPRAISAL DISTRICT 2012 ESTIMATED REAPPRAISAL PLAN

ENTITY	RESIDENTIAL			COMMERCIAL			BPP			TOTAL OF ALL DIVISIONS		
	ACCOUNTS REAPPRAISED	TOTAL NUMBER OF ACCOUNTS	PERCENT REAPPRAISED	ACCOUNTS REAPPRAISED	TOTAL NUMBER OF ACCOUNTS	PERCENT REAPPRAISED	ACCOUNTS REAPPRAISED	TOTAL NUMBER OF ACCOUNTS	PERCENT REAPPRAISED	ACCOUNTS REAPPRAISED	TOTAL NUMBER OF ACCOUNTS	PERCENT REAPPRAISED
CITIES												
Addison	1,036	2,345	44.18%	359	687	52.26%	3,050	3,050	100.00%	4,445	6,082	73.08%
Balch Springs	2,119	6,773	31.29%	320	940	34.04%	733	733	100.00%	3,172	8,446	37.56%
Carrollton	6,197	12,258	50.55%	939	1,766	53.17%	3,512	3,512	100.00%	10,648	17,536	60.72%
Cedar Hill	7,148	16,169	44.21%	358	1,195	29.96%	1,169	1,169	100.00%	8,675	18,533	46.81%
Cockrell Hill	159	932	17.06%	105	105	100.00%	169	169	100.00%	433	1,206	35.90%
Combine	206	331	62.24%	68	68	100.00%	14	14	100.00%	288	413	69.73%
Coppell	2,501	11,550	21.65%	481	836	57.54%	1,393	1,393	100.00%	4,375	13,779	31.75%
Dallas	103,587	291,489	35.54%	19,890	39,121	50.84%	46,651	46,651	100.00%	170,128	377,261	45.10%
Desoto	8,925	16,632	53.66%	302	1,281	23.58%	1,238	1,238	100.00%	10,465	19,151	54.64%
Duncanville	4,212	11,965	35.20%	263	1,114	23.61%	1,296	1,296	100.00%	5,771	14,375	40.15%
Farmers Branch	1,639	8,086	20.27%	577	1,238	46.61%	3,070	3,070	100.00%	5,286	12,394	42.65%
Ferris	0	0	0.00%	13	13	100.00%	4	4	100.00%	17	17	100.00%
Garland	25,362	64,392	39.39%	1,618	4,660	34.72%	5,645	5,645	100.00%	32,625	74,697	43.68%
Glenn Heights	1,398	3,239	43.16%	198	198	100.00%	82	82	100.00%	1,678	3,519	47.68%
Grand Prairie	16,358	35,782	45.72%	1,294	3,494	37.03%	2,703	2,703	100.00%	20,355	41,979	48.49%
Grapevine	0	0	0.00%	29	29	100.00%	76	76	100.00%	105	105	100.00%
Highland Park	991	3,398	29.16%	38	83	45.78%	370	370	100.00%	1,399	3,851	36.33%
Hutchins	332	1,299	25.56%	64	389	16.45%	302	302	100.00%	698	1,990	35.08%
Irving	15,082	42,783	35.25%	2,654	5,461	48.60%	7,700	7,700	100.00%	25,436	55,944	45.47%
Lancaster	6,921	12,609	54.89%	706	1,474	47.90%	792	792	100.00%	8,419	14,875	56.60%
Lewisville	101	293	34.47%	10	10	100.00%	9	9	100.00%	120	312	38.46%
Mesquite	13,854	38,184	36.28%	1,195	2,604	45.89%	3,116	3,116	100.00%	18,165	43,904	41.37%
Ovilla	35	162	21.60%	23	23	100.00%	7	7	100.00%	65	192	33.85%
Richardson	2,022	21,253	9.51%	764	1,606	47.57%	4,417	4,417	100.00%	7,203	27,276	26.41%
Rowlett	5,770	17,021	33.90%	854	1,018	83.89%	925	925	100.00%	7,549	18,964	39.81%
Sachse	1,695	5,029	33.70%	313	313	100.00%	246	246	100.00%	2,254	5,588	40.34%
Seagoville	1,316	4,909	26.81%	65	754	8.62%	453	453	100.00%	1,834	6,116	29.99%
Sunnyvale	898	2,164	41.50%	206	614	33.55%	400	400	100.00%	1,504	3,178	47.33%
University Park	1,898	6,908	27.48%	223	343	65.01%	756	756	100.00%	2,877	8,007	35.93%
Wilmer	263	1,433	18.35%	13	260	5.00%	134	134	100.00%	410	1,827	22.44%
Wylie	177	191	92.67%	15	15	100.00%	11	11	100.00%	203	217	93.55%
Total Cities	232,202	639,579	36.31%	33,957	71,712	47.35%	90,443	90,443	100.00%	356,602	801,734	44.48%
SCHOOLS												
Carrollton/Farmers Branch	9,216	22,867	40.30%	1,293	3,486	37.09%	5,729	5,729	100.00%	16,238	32,082	50.61%
Cedar Hill	7,901	16,833	46.94%	374	1,265	29.57%	1,157	1,157	100.00%	9,432	19,255	48.98%
Coppell	3,199	13,905	23.01%	658	1,201	54.79%	2,080	2,080	100.00%	5,937	17,186	34.55%
Dallas	97,999	268,764	36.46%	19,698	39,796	49.50%	46,622	46,622	100.00%	164,319	355,182	46.26%
Desoto	9,515	18,650	51.02%	518	1,118	46.33%	906	906	100.00%	10,939	20,674	52.91%
Duncanville	9,219	20,535	44.89%	591	2,202	26.84%	1,790	1,790	100.00%	11,600	24,527	47.29%
Ferris	0	115	0.00%	95	95	100.00%	12	12	100.00%	107	222	48.20%
Garland	30,024	82,088	36.58%	2,938	6,091	48.24%	6,412	6,412	100.00%	39,374	94,591	41.63%
Grand Prairie	16,036	34,398	46.62%	1,321	3,423	38.59%	2,744	2,744	100.00%	20,101	40,565	49.55%
Grapevine-Colleyville	0	0	0.00%	10	10	100.00%	129	129	100.00%	139	139	100.00%
Highland Park	2,977	10,717	27.78%	353	514	68.68%	1,914	1,914	100.00%	5,244	13,145	39.89%
Irving	11,652	35,888	32.47%	2,312	4,905	47.14%	5,576	5,576	100.00%	19,540	46,369	42.14%
Lancaster	6,993	13,083	53.45%	689	1,726	39.92%	790	790	100.00%	8,472	15,599	54.31%
Mesquite	16,039	46,720	34.33%	1,494	3,236	46.17%	3,444	3,444	100.00%	20,977	53,400	39.28%
Richardson	10,850	56,611	19.17%	1,492	3,382	44.12%	9,311	9,311	100.00%	21,653	69,304	31.24%
Sunnyvale	898	2,164	41.50%	206	627	32.85%	400	400	100.00%	1,504	3,191	47.13%
Total Schools	232,518	643,338	36.14%	34,042	73,077	46.58%	89,016	89,016	100.00%	355,576	805,431	44.15%