
Sidewalk Cafes and Head-In Parking on Greenville Avenue

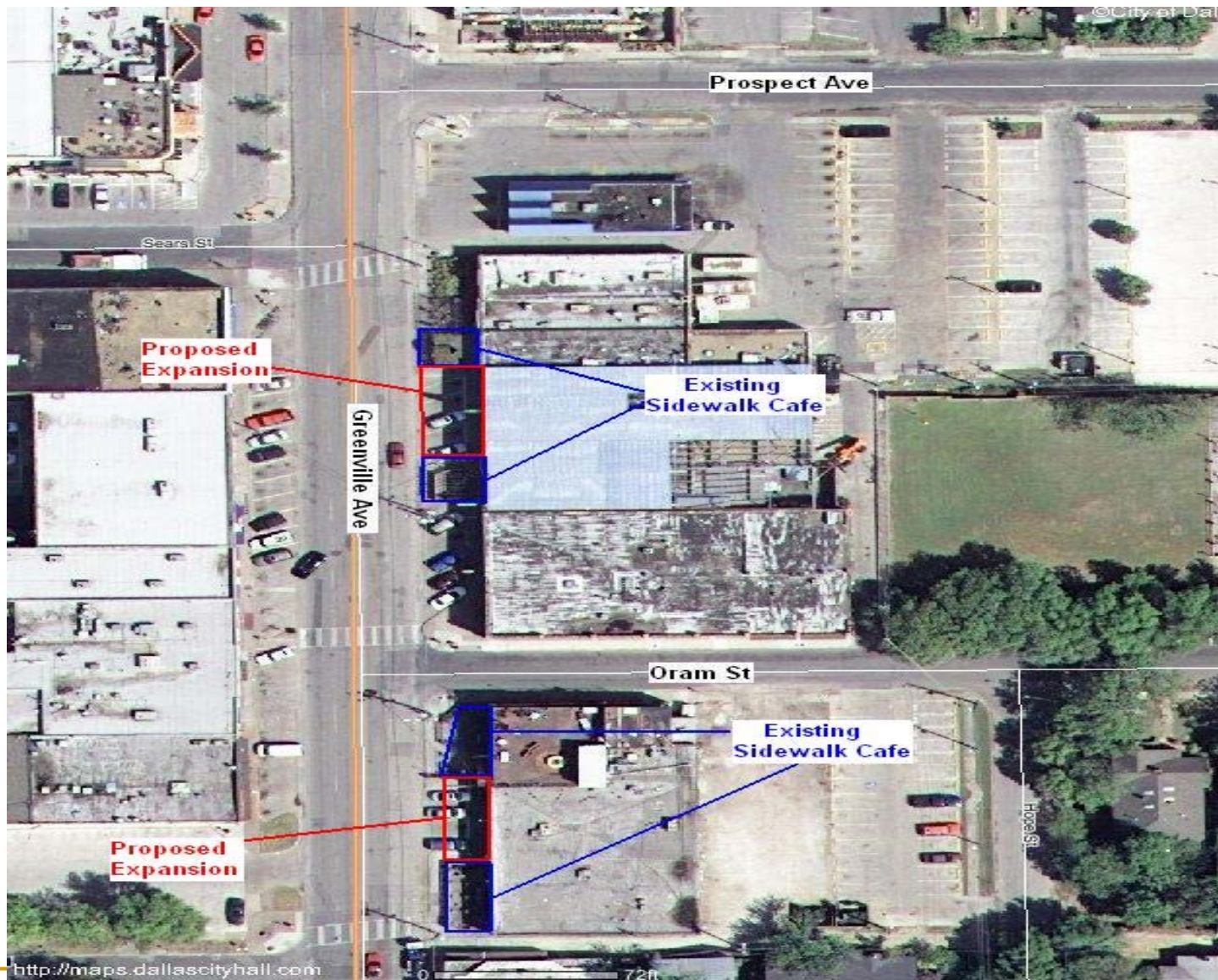
Economic Development and Housing
Committee

April 17, 2006

Requests Pending

- Wonderful Seven A, LP has requested the addition of 609 square feet to its existing sidewalk café license areas on the east side of Greenville between Oram and Prospect for a total licensed area of 1,360 square feet
- Lowgreen, PS has requested the addition of 659 square feet to its existing sidewalk café license areas on the east side of Greenville south of Oram for a total licensed area of 1,165 square feet
 - A minimum 6-foot wide sidewalk is to be constructed adjacent to the curb in the café areas with the elimination of a total of 10 head-in parking spaces
 - The applicants have obtained parking agreements which will provide the necessary off street parking pursuant to Resolution No. 95-2162 (This resolution requires that the applicant of new licenses for public dining on City-owned right-of-way on Greenville Avenue replace any parking spaces in the right-of-way with off street parking spaces on a one-for-one basis plus additional off-street parking for each 300 square feet of public dining space)

Aerial Photo Location View



Pros and Cons

■ Pros

- ❑ Increased retail activity and tax revenue
- ❑ Elimination of head-in parking traffic bottleneck on Greenville
- ❑ Restoration of sidewalks along curbs within public right-of-way

■ Cons

- ❑ Loss of convenient parking spaces on street
- ❑ Neighborhood concerns that it results in increased traffic and parking demand in area

Recommendation

- Approval of both current sidewalk café license requests and future café license requests in the area that meet staff review requirements and have adequate parking provided