



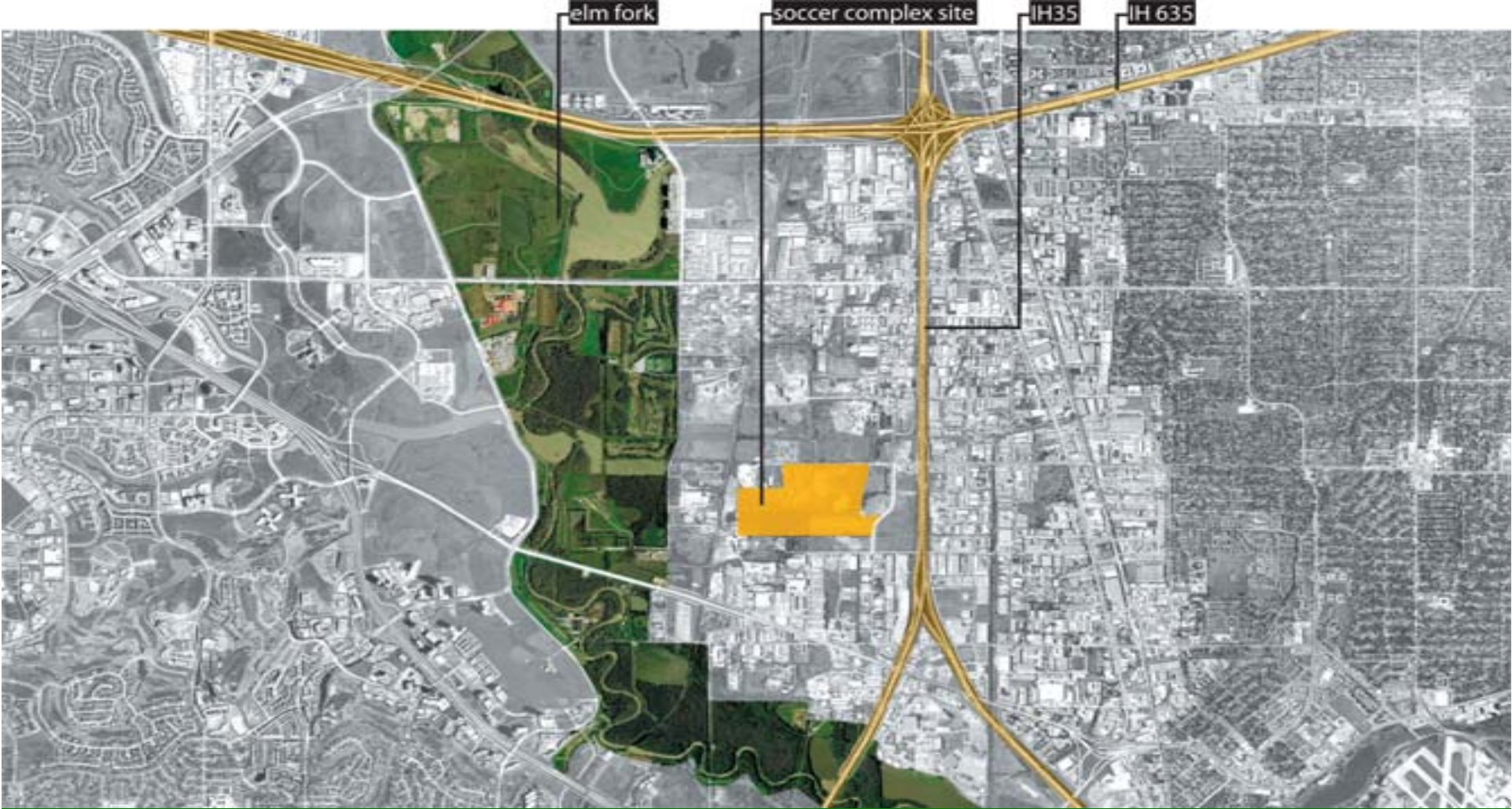
**elm fork  
athletic complex  
project update  
trinity river committee**

**april 16, 2007**

1 of 14

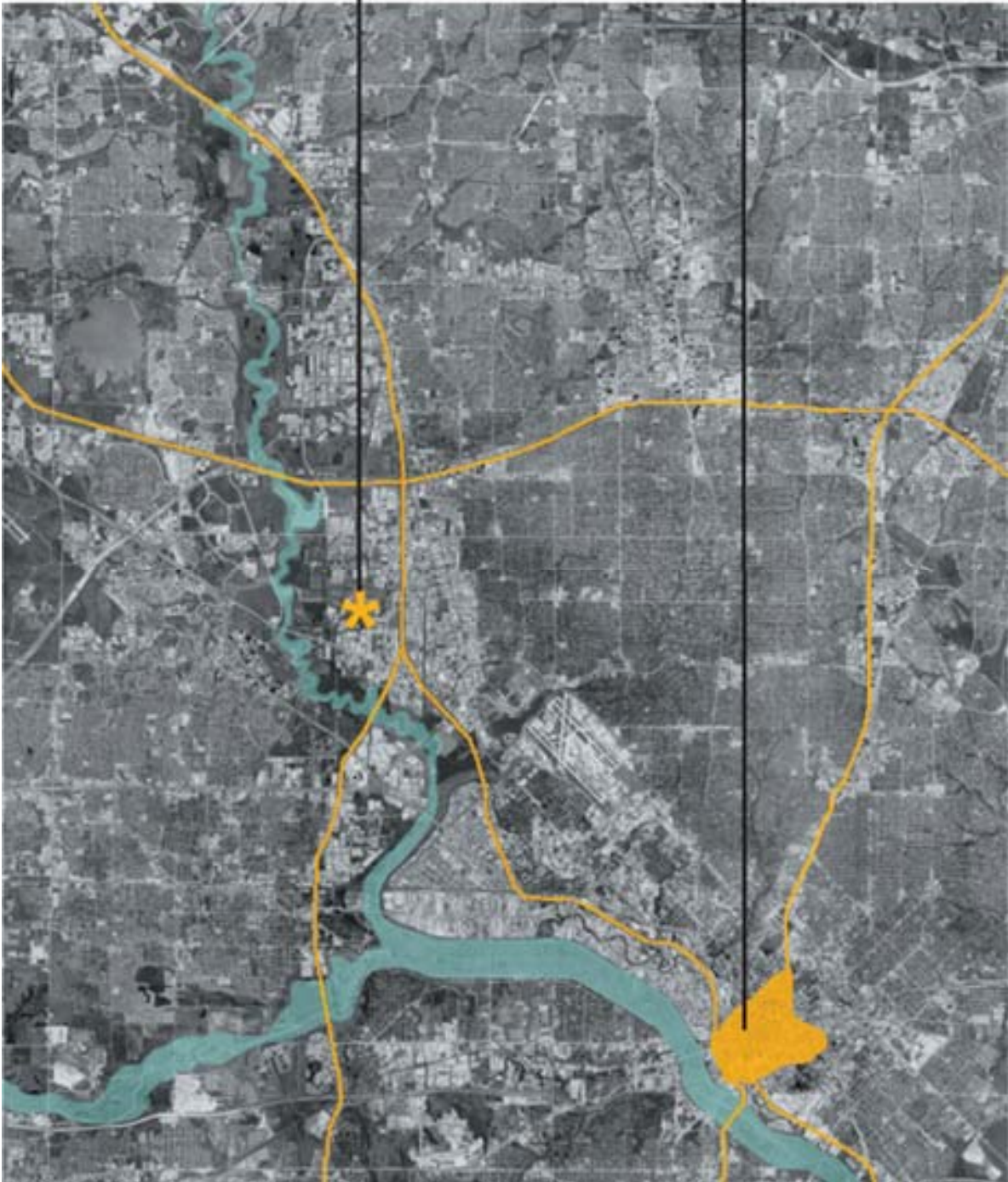


# project location



elm fork

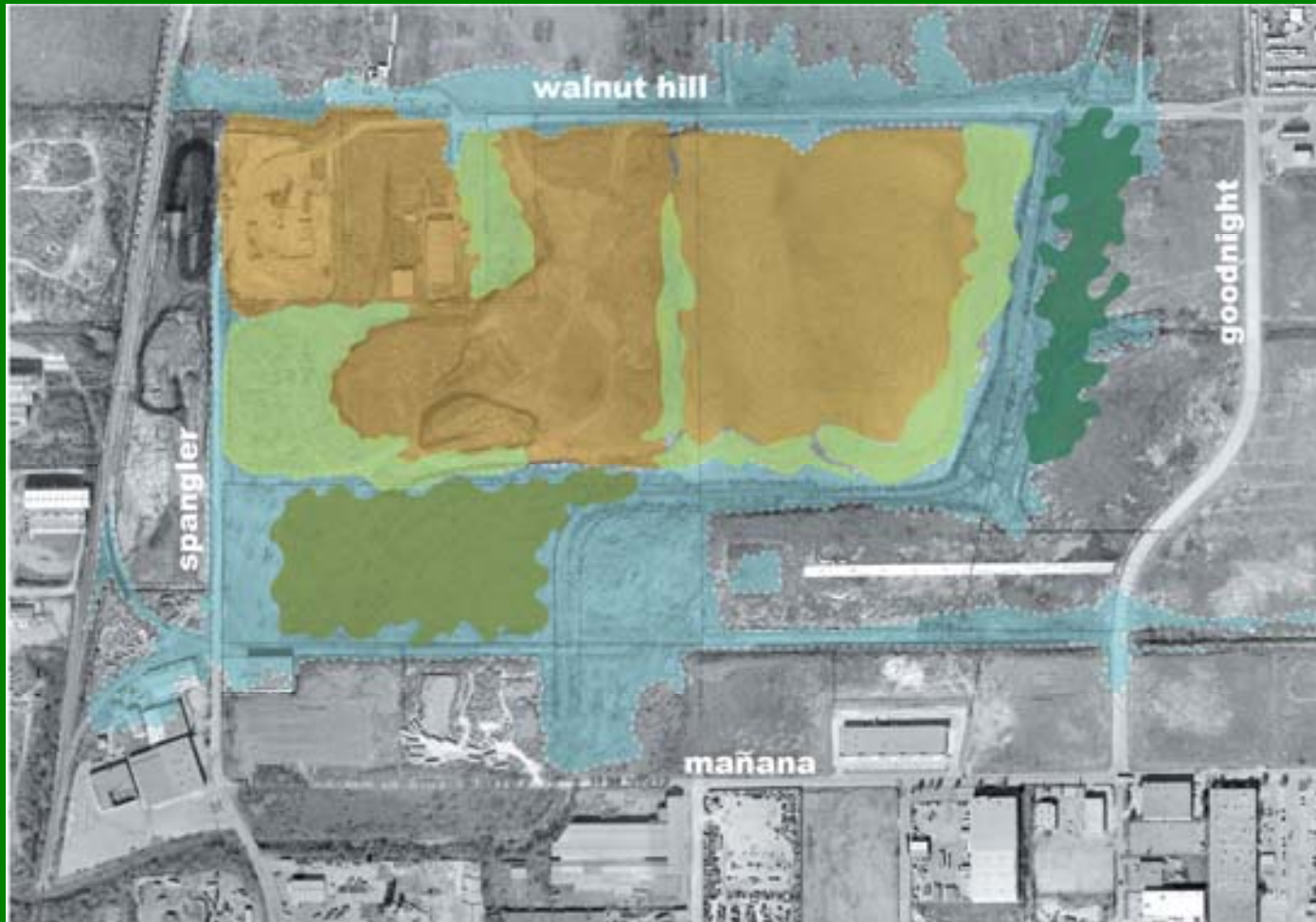
downtown dallas



# project location



# site analysis



# master plan

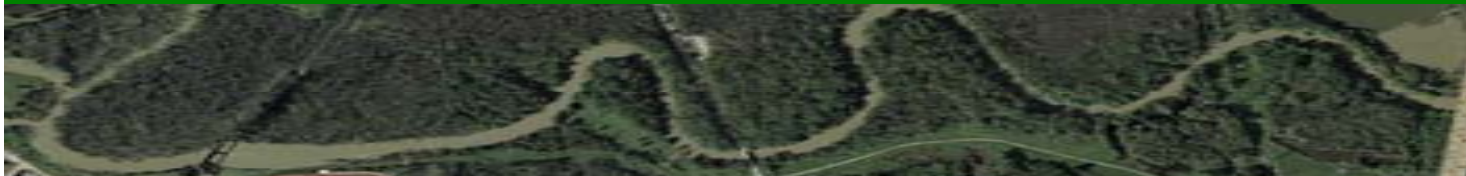
- 160 acres total
- 22 playing fields (16 adult , 6 youth)
- championship field
- 1,200 parking spaces
- overflow parking option north of walnut hill (to be negotiated)
- 3 shade pavilions
- maintenance building
- 4 miles of paths and trails
- 3 secured entry/exit points
- sustainable design practices
- concessions, restrooms, playground
- presented to park board march '07



5 of 14



# master plan



# phasing plan



7 of 14



# shade pavilions



8 of 14





# main pavilion



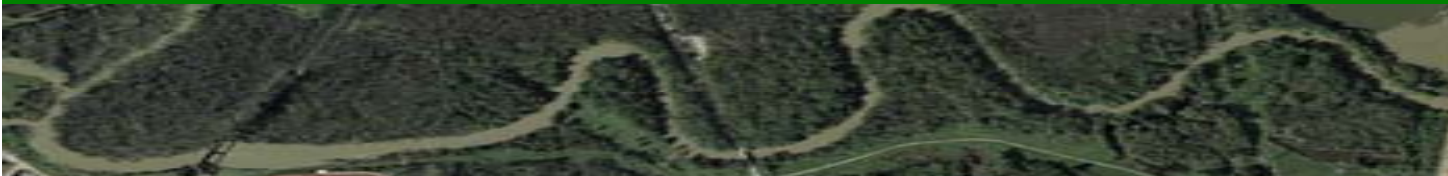
9 of 14



# championship field



10 of 14



# trails



11 of 14



# funding sources



## ■ elm fork athletic complex phase one funding sources

■ 98' bonds:	\$13,300,000
■ 03' bonds:	\$ 2,500,000
■ 06' bonds:	\$14,200,000
■ total bond funds:	\$30,000,000

■ elm fork athletic complex land acquisition: \$13,000,000

■ elm fork athletic complex phase one (design and construction): \$16,800,000

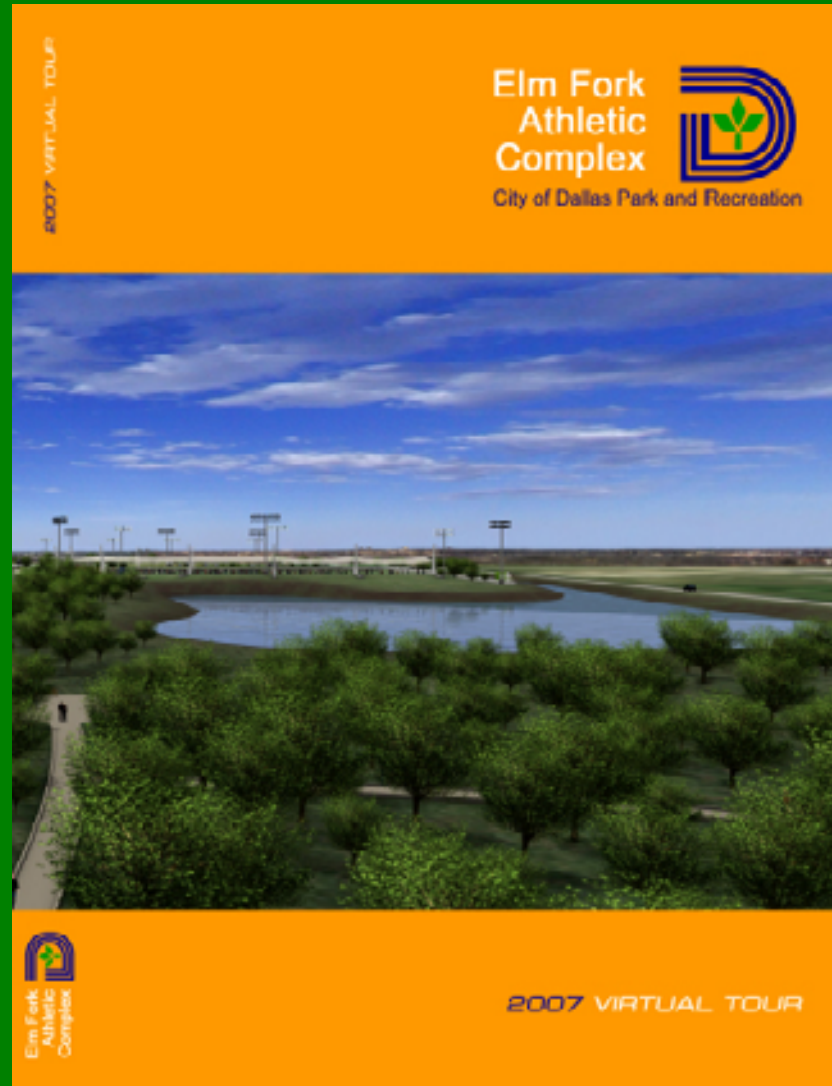
■ elm fork athletic complex phase two (design and construction): \$ 8,800,000

■ elm fork athletic complex total \$38,600,000

12 of 14



# computer animation



13 of 14



# next steps and schedule

- detailed site characterization
- permitting – tceq, fema, corps of engineers
- continue phase 2 property acquisitions
- detailed topographic survey
- construction documents
- brief trinity river committee on update of flood control project in may
- design to begin august 2007, construction estimated to commence spring 2009



14 of 14

