

Memorandum



CITY OF DALLAS

DATE April 15, 2010

TO Trinity River Corridor Project Committee Members:
David A. Neumann (Chairman) Vonciel Jones Hill
Steve Salazar (Vice-Chair) Delia Jasso
Mayor Pro Tem Dwaine Caraway Linda Koop
Deputy Mayor Pro Tem Pauline Medrano
Carolyn R. Davis

SUBJECT **Riverfront Boulevard Design from Continental Avenue to Cadiz Street**

Attached you will find a briefing entitled Riverfront Boulevard "Preliminary Design" Public Meeting Presentation Preview that will be presented to the Trinity River Corridor Project Committee on April 20, 2010. The briefing will provide information regarding the Riverfront Boulevard from Continental Avenue to Cadiz Street project, as well as a preview of a presentation planned for the May 10, 2010 Riverfront Boulevard Public Involvement Workshop presentation.

Please contact me if you have questions.

Jill A. Jordan, P.E.
Assistant City Manager



THE TRINITY
DALLAS

C: Honorable Mayor and Members of the City Council
Mary K. Suhm, City Manager
Ryan S. Evans, First Assistant City Manager
A.C. Gonzalez, Assistant City Manager
Forest E. Turner, Assistant City Manager
Jeanne Chipperfield, Chief Financial Officer
Deborah A. Watkins, City Secretary
Thomas P. Perkins, Jr., City Attorney
Craig D. Kinton, City Auditor
Judge C. Victor Lander
Helena Stevens-Thompson, Assistant to the City Manager
Frank Libro, Director, Public Information Office
Kelly High, Director, Trinity Watershed Management
Rebecca Rasor, P.E., Managing Director, Trinity River Corridor Project

Riverfront Boulevard Design

From

Continental Avenue to Cadiz Street

Trinity River Corridor Project Committee

Prepared by
City of Dallas Public Works and Transportation
Dallas County
Hayden Consultants, Inc.
April 20, 2010



THE TRINITY
DALLAS



Purpose



- Provide information regarding the reconstruction and expansion of Riverfront Boulevard
- Provide preview of May 10th Riverfront Boulevard public involvement workshop presentation

Background



- Riverfront Boulevard project is a joint partnership project between the City of Dallas and Dallas County
- The City of Dallas and Dallas County are hosting a public involvement workshop on May 10th to present information regarding the context of the project, the preliminary alignment, and to gather community/stakeholder input regarding the project

Riverfront Boulevard Design

From

Continental Avenue to Cadiz Street

Public Involvement Workshop

May 10th, 2010

Dallas City Hall, Conference Center Auditorium

6:30-7:00 Open House

7:00-8:00 Presentation followed by Question/Answer

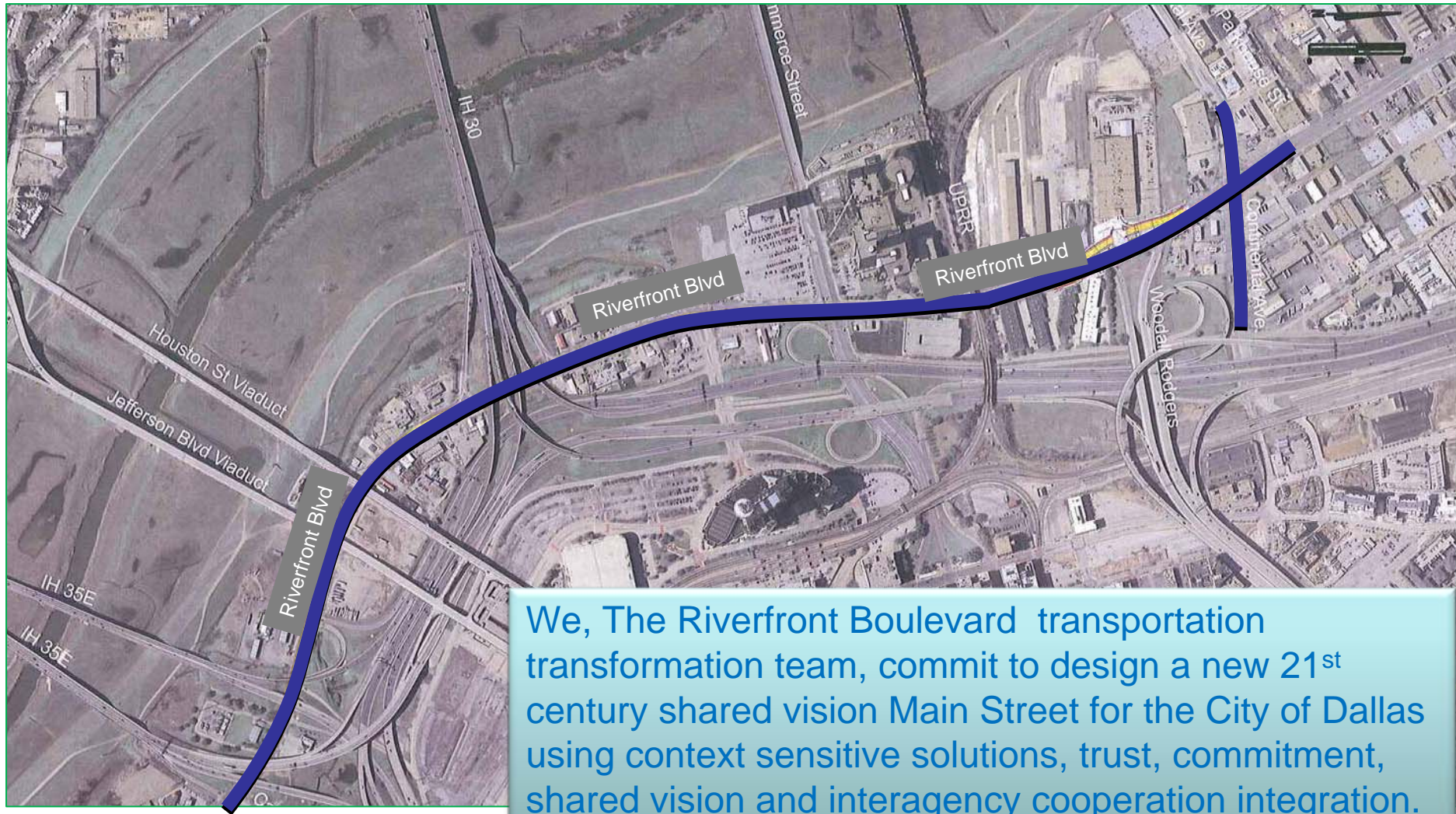


Project Background



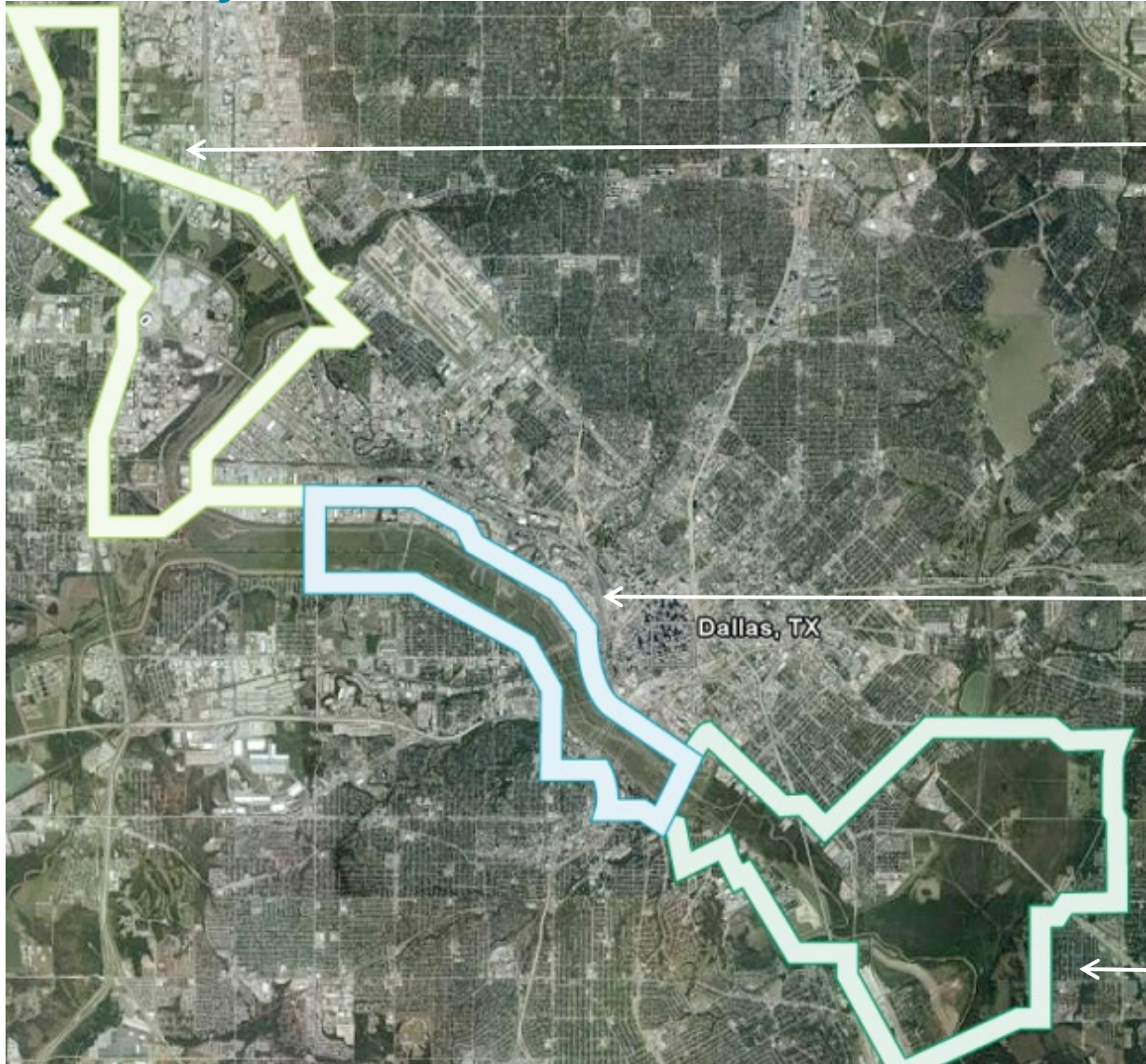
- Joint project between the City of Dallas and Dallas County
- Project Limits
 - Riverfront Boulevard from Continental Avenue to Cadiz Street
 - Continental Avenue from Riverfront Boulevard to southbound IH35 frontage road

Project Background (cont'd)



We, The Riverfront Boulevard transportation transformation team, commit to design a new 21st century shared vision Main Street for the City of Dallas using context sensitive solutions, trust, commitment, shared vision and interagency cooperation integration.

Trinity Context



TRINITY FIELDS



TRINITY LAKES



TRINITY FOREST

Trinity Loop Wayfinding Program



Trinity Lakes Loop Road

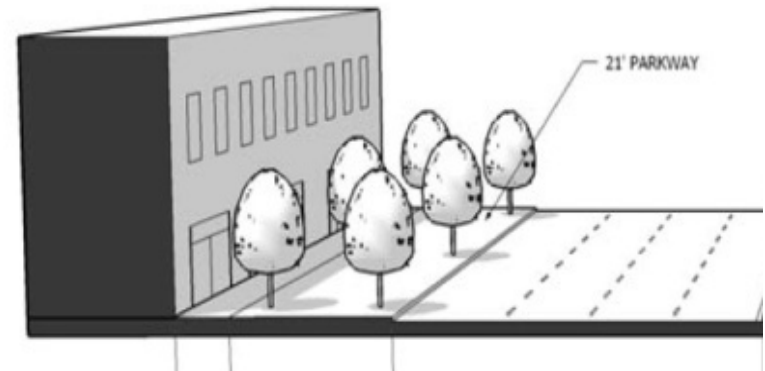
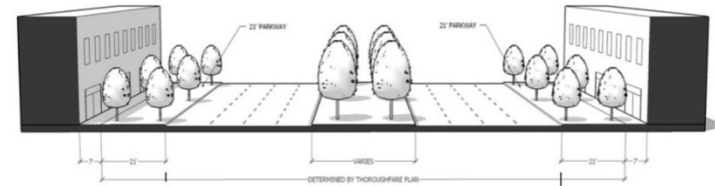
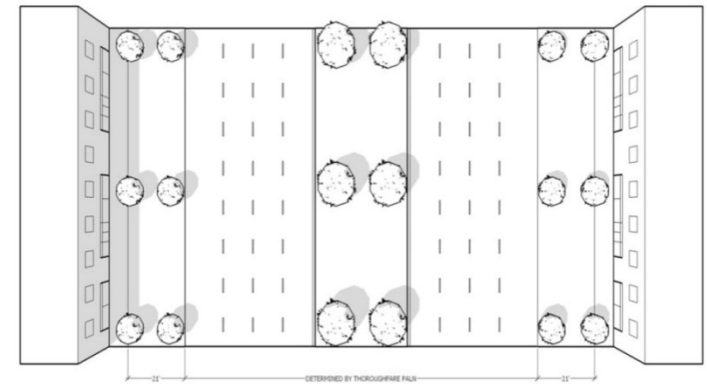
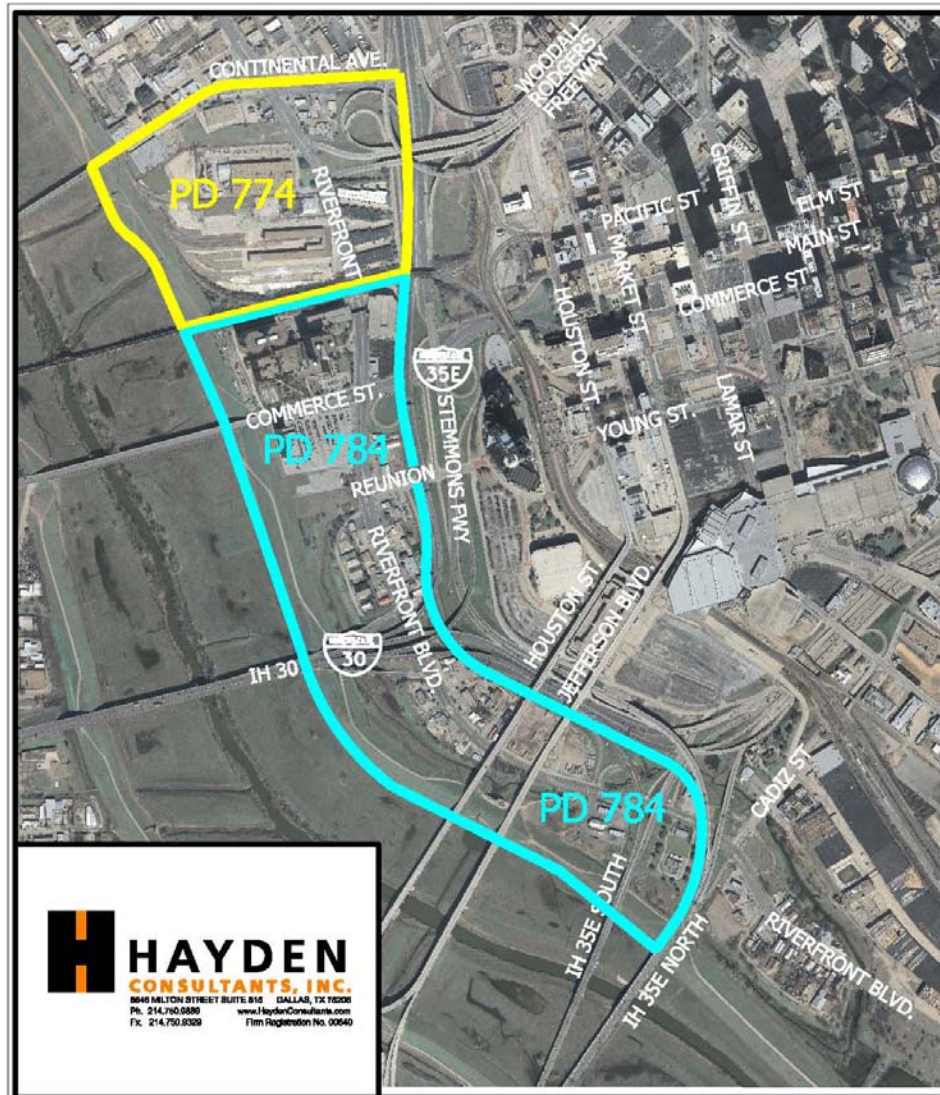
Trinity Wayfinding Program:
Examples of Proposed Signage

Riverfront/Trinity Lakes Context

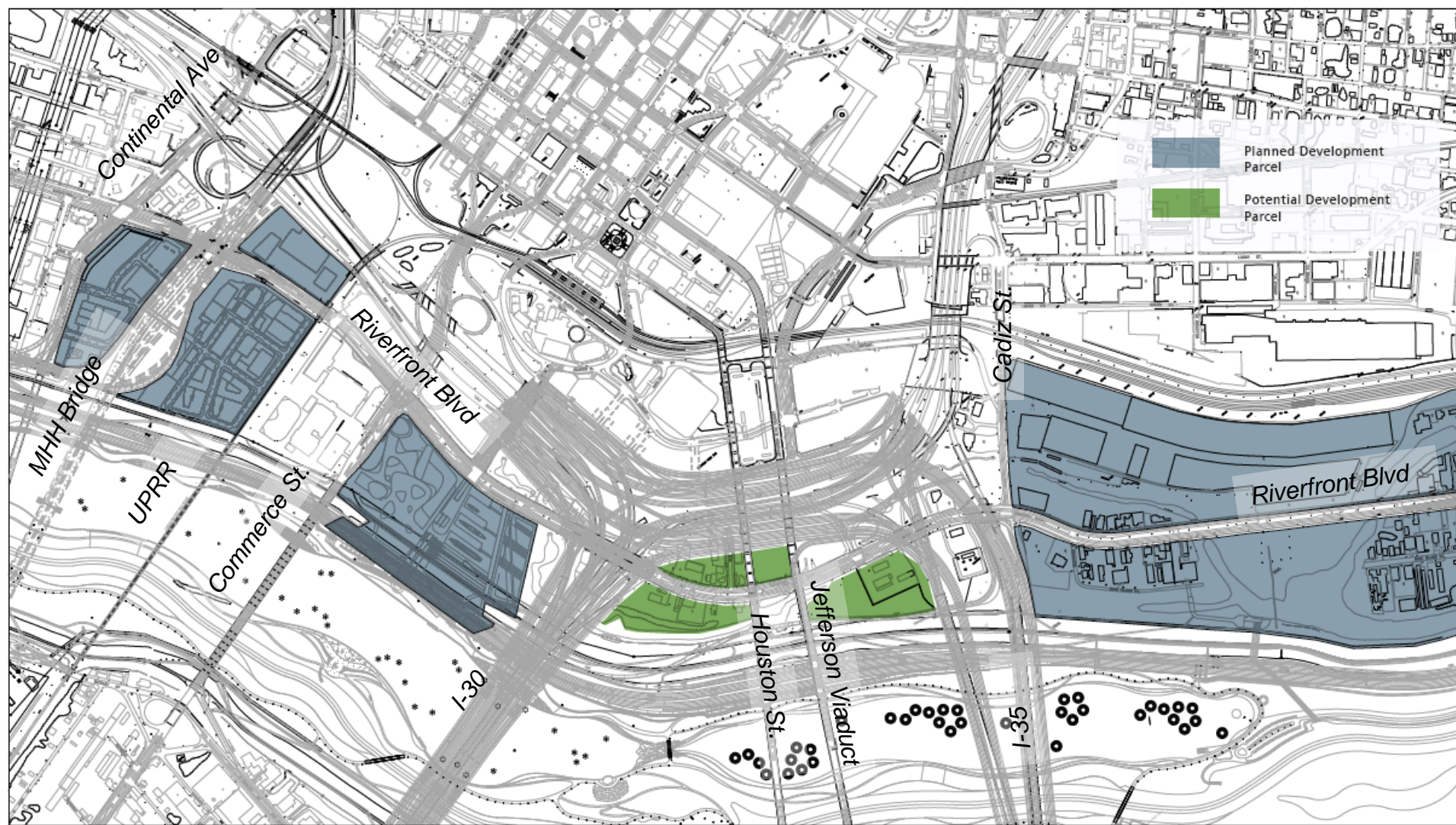


- Riverfront Boulevard will become the primary frontage road for the Trinity Lakes area of the Park.
- A new emphasis on mobility options such as transit, bicycles, pedestrians and sustainability.
- New diverse developments.
- Opportunities for green infrastructure and public open space.

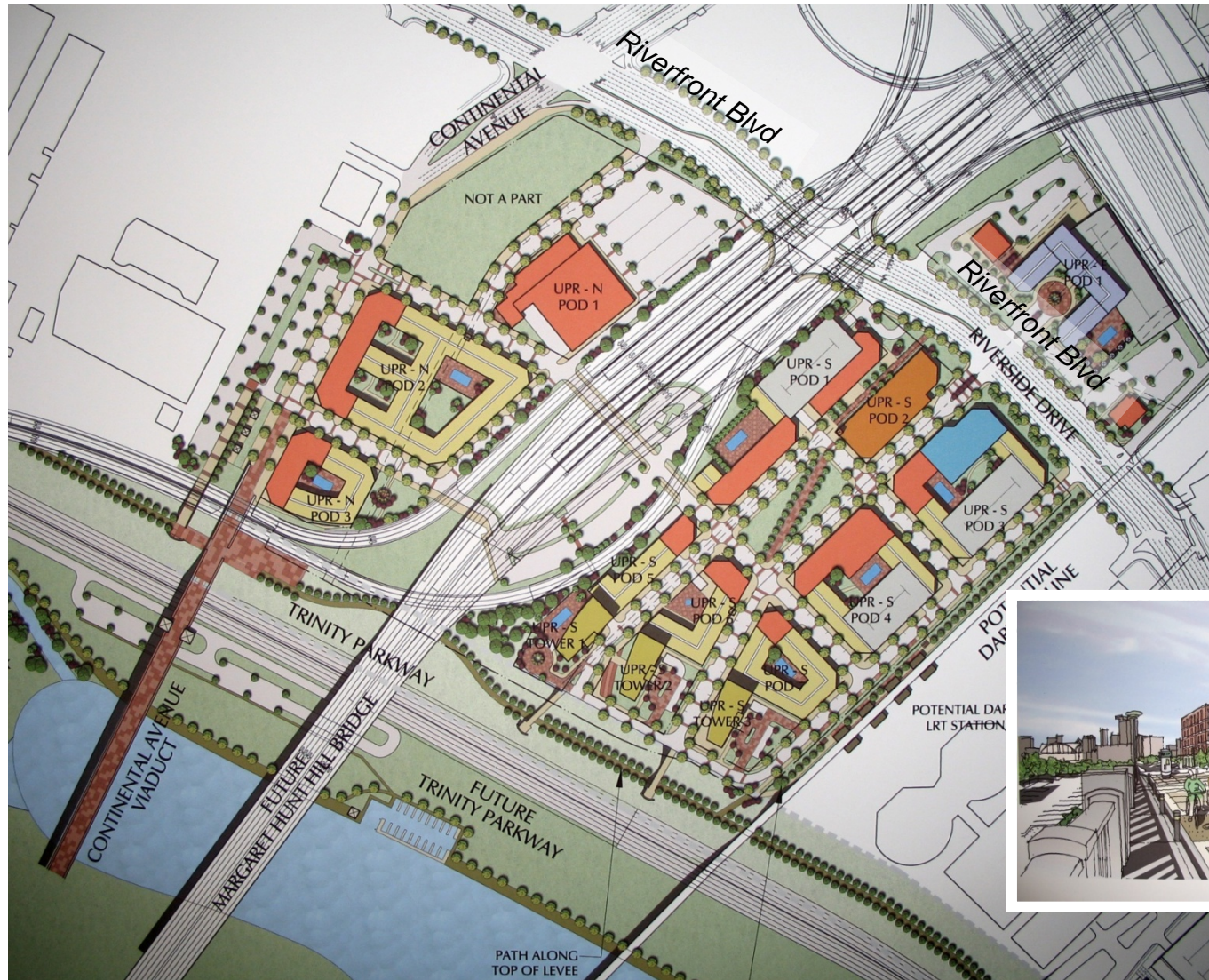
Riverfront Corridor Planned Development Districts



Development Parcels



Development Parcels (cont'd)





Potential Trinity Gateway Development

Development Parcels (cont'd)

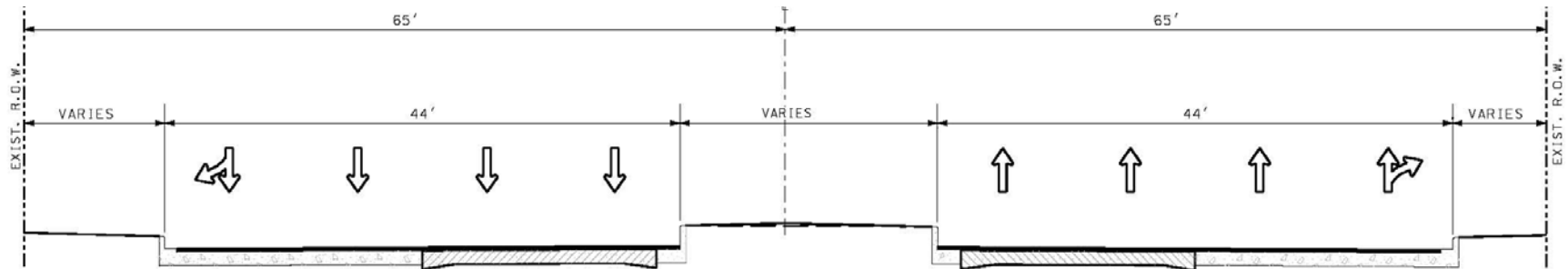


Existing Conditions

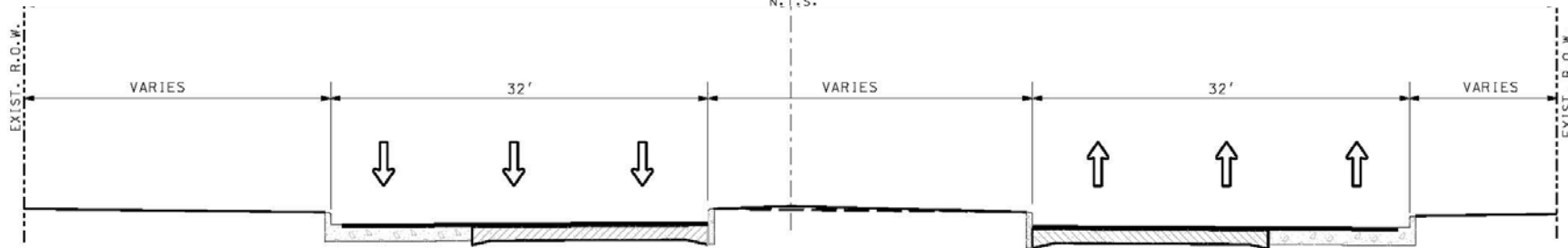


- 6 lane arterial from I30 to Cadiz Street
- 6 lane arterial, plus turn lanes from Continental Avenue to I30
- 130' Right of Way
- Pavement and drainage originally constructed in 1929
 - Expansions and overlays since 1929
- Water and wastewater over 40 years in age
- Few existing sidewalks
- Undersized drainage system

Existing Conditions (cont'd)



EXISTING TYPICAL SECTION
RIVERFRONT BLVD NORTH OF I-30
N.T.S.



EXISTING TYPICAL SECTION
RIVERFRONT BLVD SOUTH OF I-30
N.T.S.



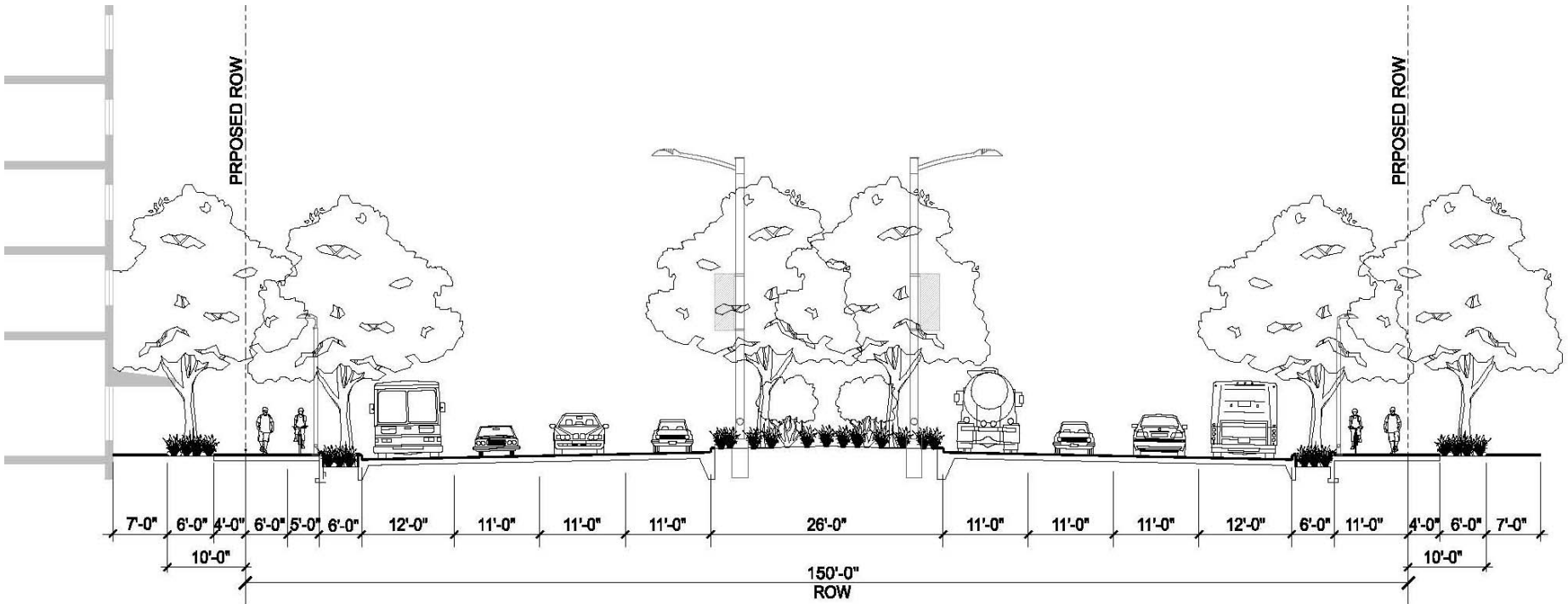
Existing Typical Cross Section

Project Details and Scope



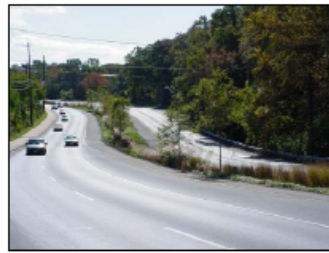
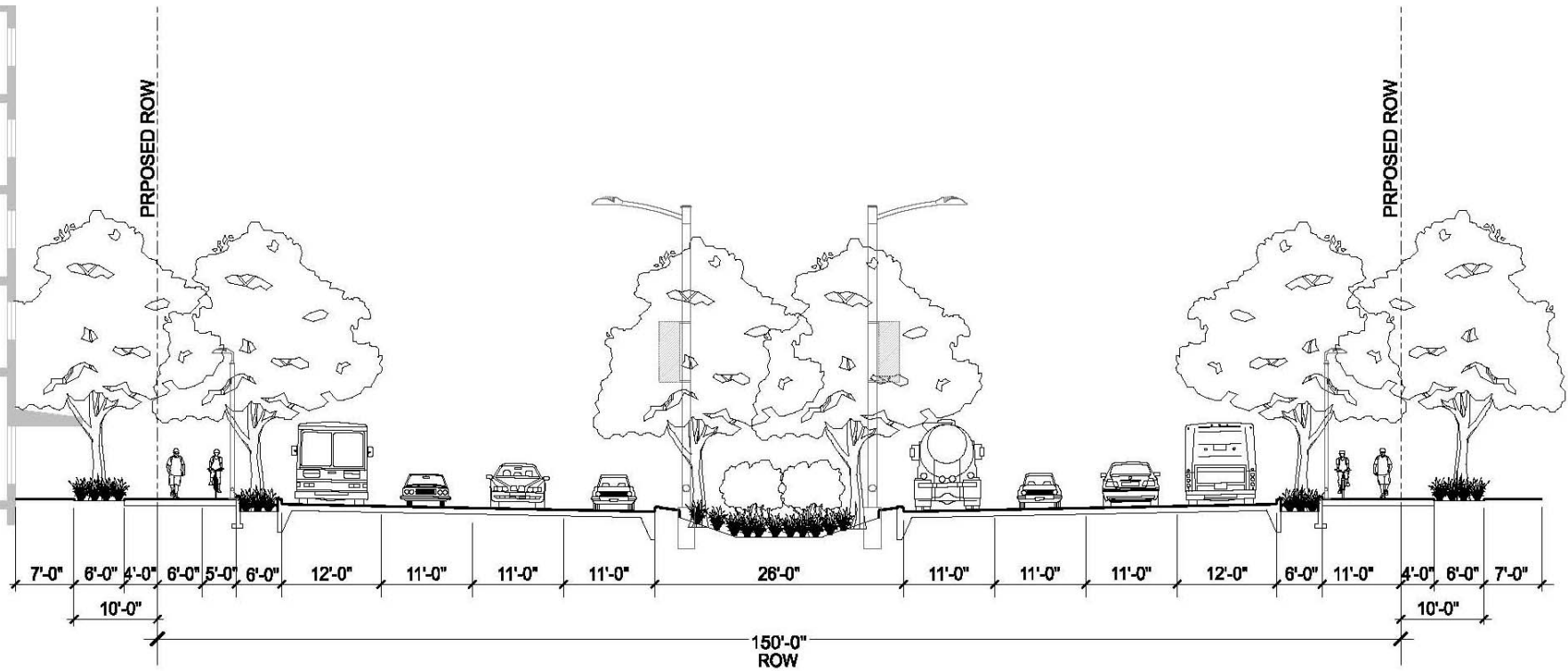
- 1.5 mile, 8 lane thoroughfare based on City of Dallas thoroughfare master plan
- 150 foot Right of Way
- “Complete Street” – includes landscape zones, 5’ cycle tracks and 6’ pedestrian sidewalks
- Upgrade of drainage system
- Sustainable landscaping and drainage considerations
- Replacement/upgrade of existing water and wastewater transmission and distribution lines

Proposed Conditions



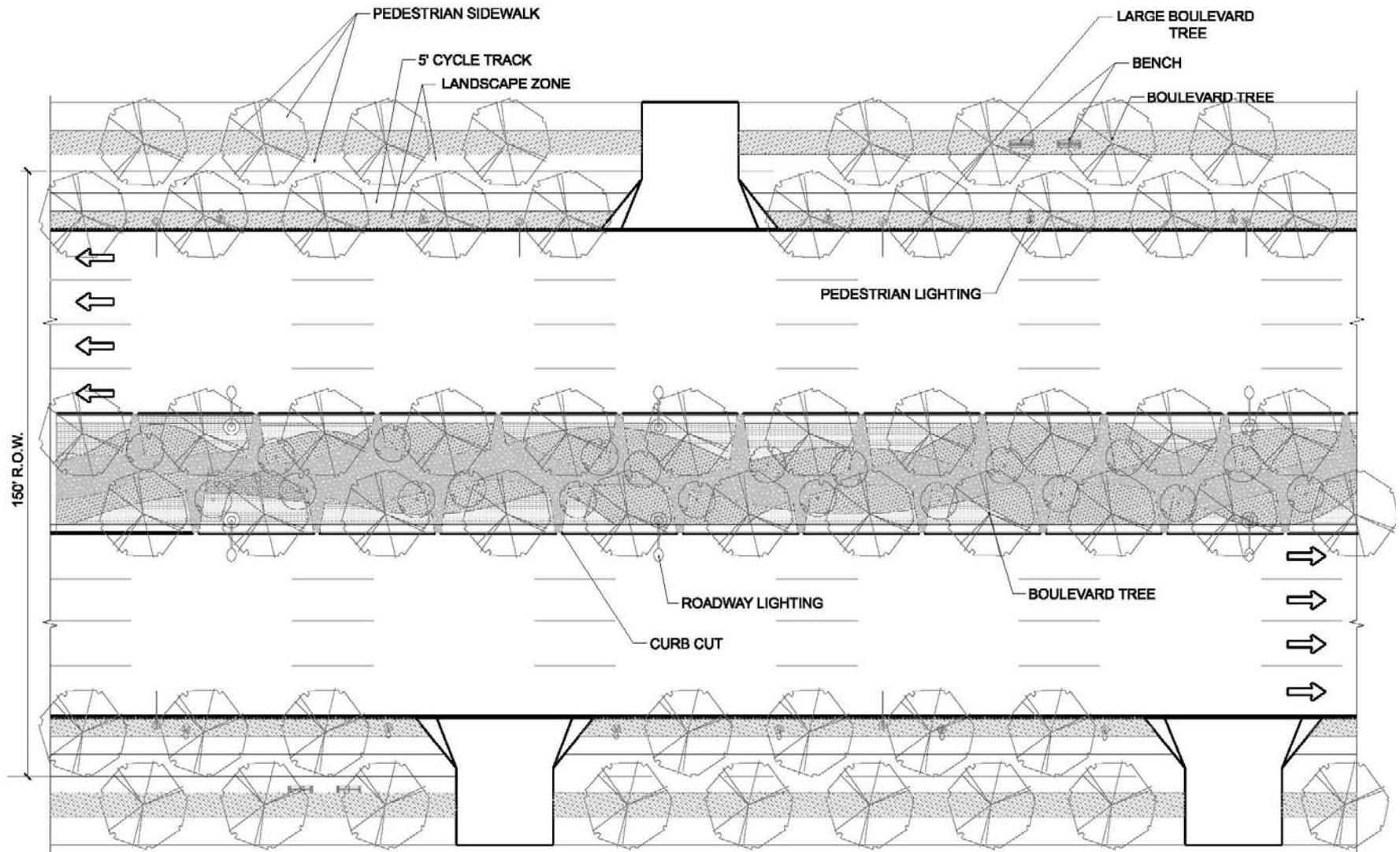
Typical Cross Section - Raised Median

Proposed Conditions (cont'd)



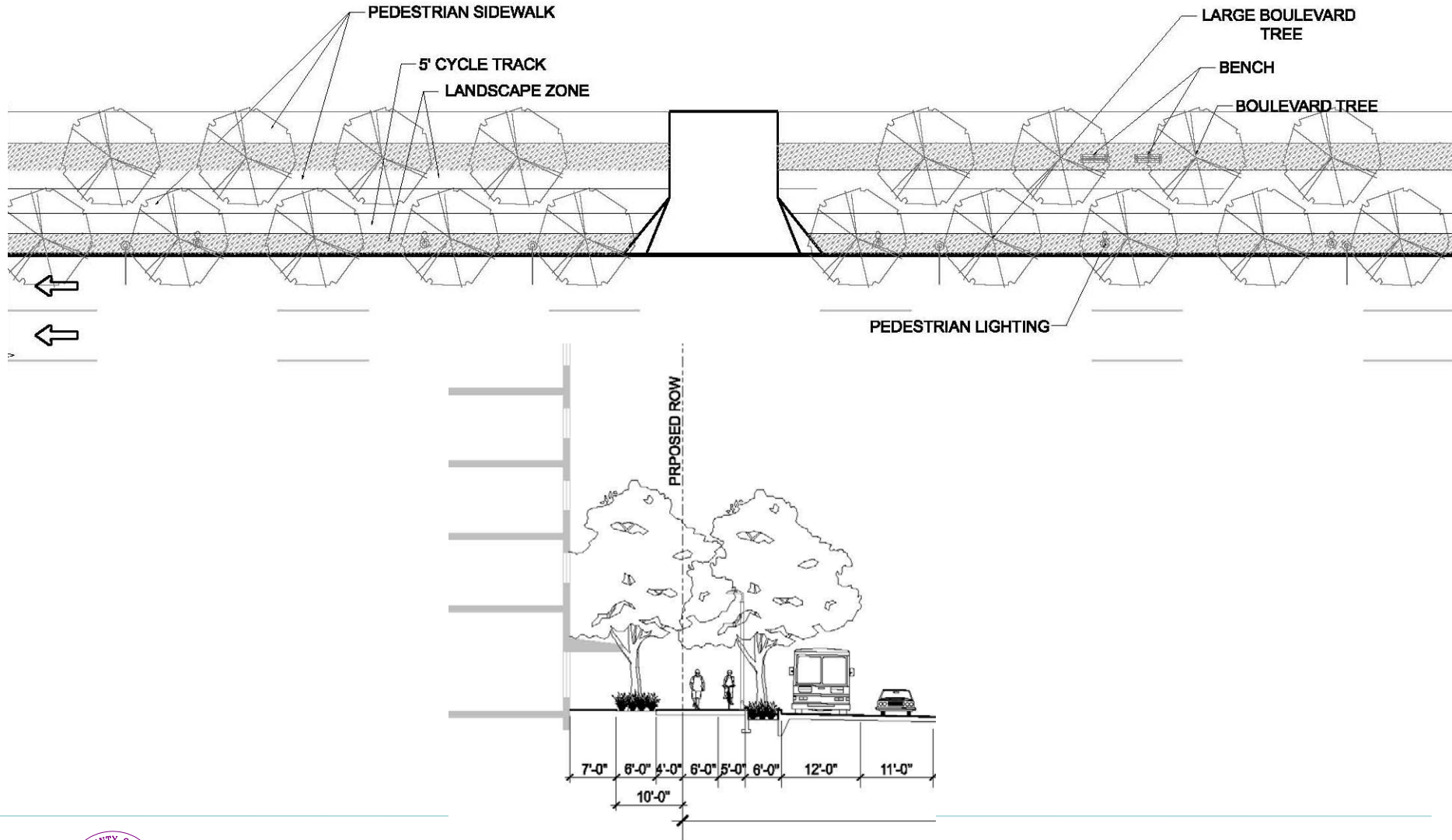
Typical Cross Section - Vegetated Median Bioswale

Proposed Conditions (cont'd)

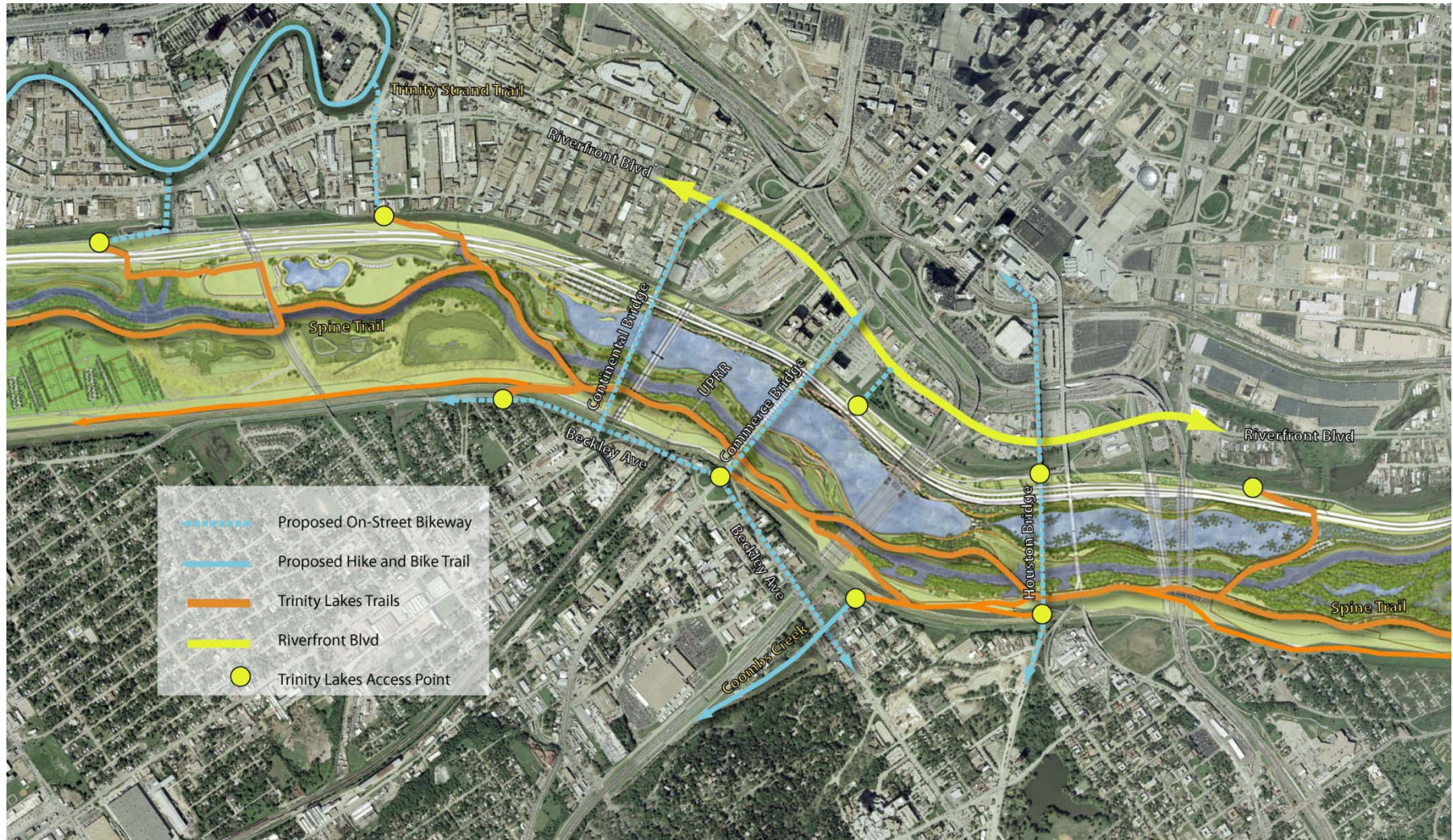


Typical Plan View

Proposed Conditions (cont'd)



Bike Plan Context



Landscape Concepts



Urban Zones:

- Median Trees: Red Oak
Caddo Maple
- Parkway Trees: Mexican Plum
Texas Persimmon
Desert Willow



Caddo Maple
Acer barbatum

- Readily available
- Native to Texas, adapted to Dallas County
- Grows best in more acidic soils



Texas Persimmon
Diospyrus texana

- Readily available
- Native to Dallas County
- Very hardy, high wildlife value



Mexican Plum
Prunus mexicana

- Readily available
- Native to Dallas County area
- Hardy, very attractive



Desert Willow
Chilopsis linearis

- Readily available
- Native to Texas, adapted to Dallas County
- Great summer flowering tree
- Best on parkway only, not floodway

Green Zone:

- Median Trees: Bald Cypress
- Parkway Trees: Pond Cypress
Possum haw
Redbud



Bald Cypress
Taxodium distichum

- Readily available
- Native to Texas, adapted in Dallas County
- Very adaptable



Pond Cypress
Taxodium ascendens

- Readily available
- Not native, adapted to Dallas County
- Very adaptable
- Smaller/more columnar than Bald Cypress



Possumhaw Holly
Ilax decidua

- Readily available
- Native to Dallas County area
- Hardy, winter interest



Texas Redbud
Cercis canadensis var texensis

- Readily available
- Native to Dallas County area
- Very adaptable, early blooms, nice Fall color

Intersections:

- Median Trees: Sweet gum
- Parkway Trees: Chinese Pistachio



Sweetgum
Liquidambar styraciflua

- Readily available
- Native to Texas, adapted to Dallas County
- More suited to East Texas



Chinese Pistachio
Pistacia chinensis

- Readily available
- Not native, adapted to Dallas County
- Very heat tolerant and adaptive

Landscape Concepts (cont'd)



Median and Parkway Landscape Palette:



Big Bluestem
Andropogon gerardii



Little Bluestem
Schizachyrium scaparium



Prairie Cordgrass
Spartina pectinata



Cherokee Sedge
Carex cherokeensis



Hard-stem Blurush
Scirpus acutus



Eastern Gamagrass
Tripsacum dactyloides



Creeping Spikerush
Eleocharis palustris



Purple Muhly
Muhlenbergia capillaris



Deer Grass
Muhlenbergia rigens



Virginia Wildrye
Elymus virginicus

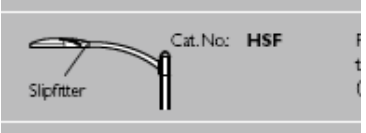


Switch Grass
Panicum virgatum

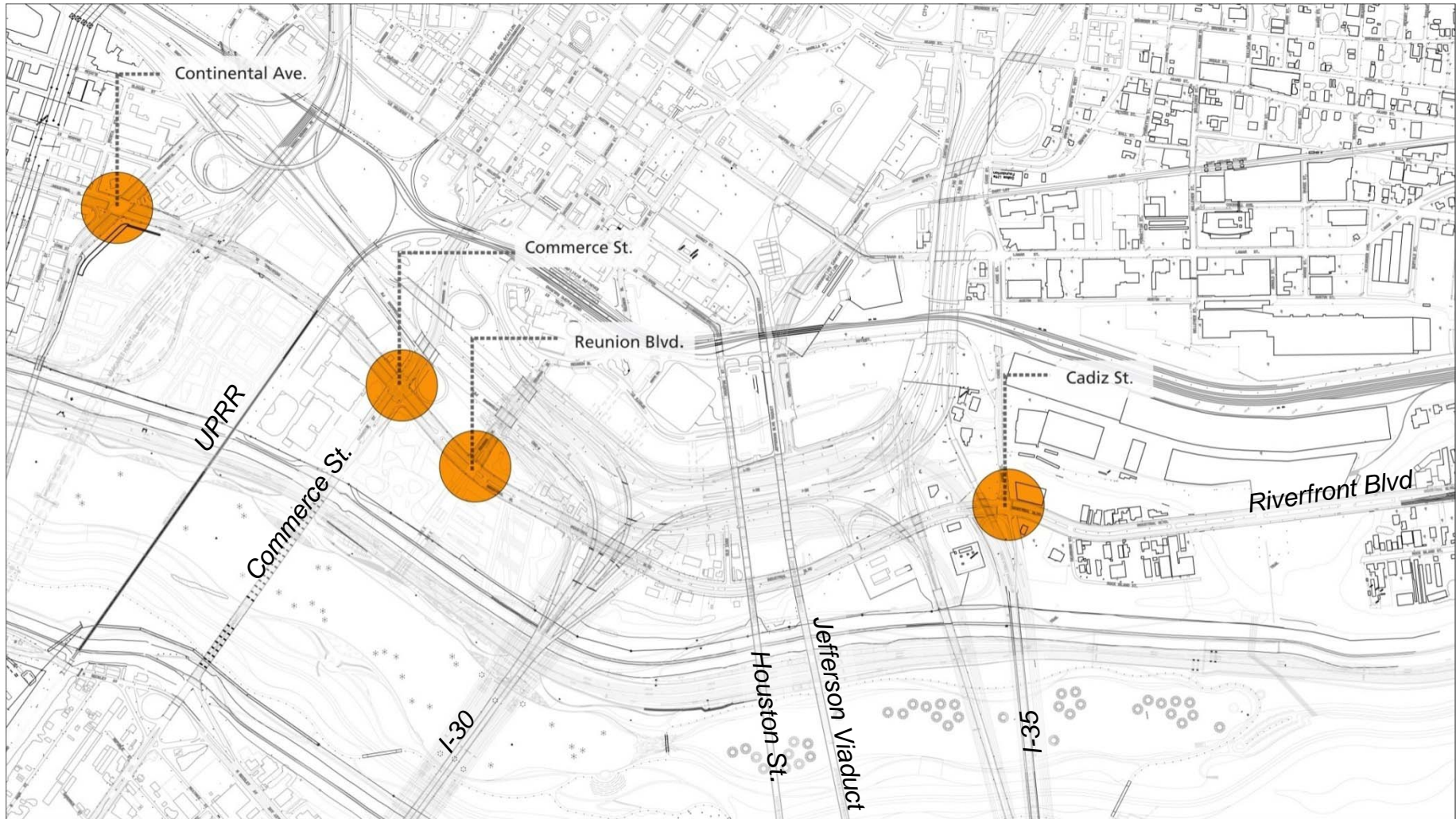


Mexican Feather Grass
Nassella tenuissima

Amenities Concepts

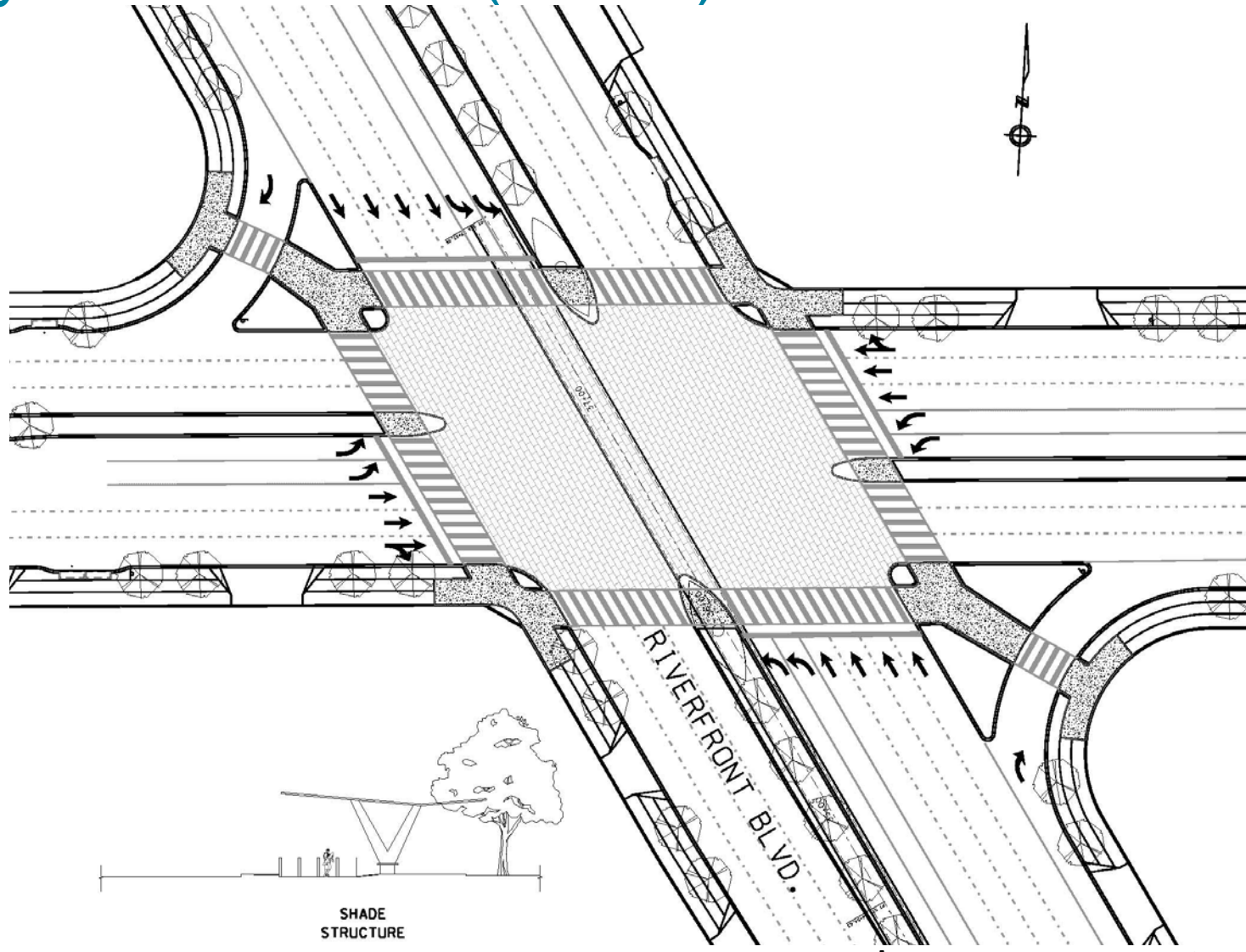


Key Intersections



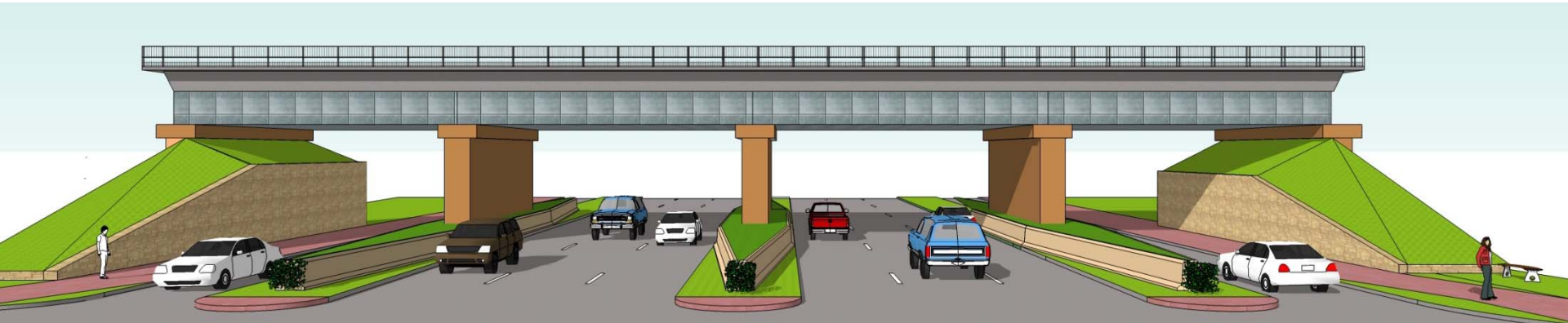
● Key Intersections

Key Intersections (cont'd)



Conceptual Key Intersection Layout

Special Considerations



Union Pacific Railroad Bridge

Special Considerations (cont'd)



NE 28th Street, Portland, Oregon (example)

Modern Streetcar - Potential Future Option

Budget



Estimated Costs:

Design and Project Delivery	\$6,500,000
Right-of-Way and Utilities	\$9,000,000
Construction*	<u>\$39,000,000</u>
Total Project Cost	\$54,500,000

* Estimated construction cost includes costs for paving, drainage, traffic signals, landscaping, and amenities.

Available Funding:

City of Dallas 2003 Bond Program	\$300,000
City of Dallas 2006 Bond Program	\$5,488,091
Dallas County	\$5,756,219
Regional Toll Revenue (RTR) funds	<u>\$29,127,713</u>
Total Available Funding	\$40,672,023

Estimated Project Schedule



- **Began Preliminary Design** **June 2009**
- **Complete Preliminary Design** **April 2010**

- **Public Involvement Meeting** **May 2010**

- **Begin Final Design** **May 2010**
- **Complete Final Design** **April 2011**

- **Begin Right-of-Way Acquisition** **November 2010**
- **Complete Right-of-Way Acquisition** **July 2011**

- **Begin Utility Relocations** **April 2011**
- **Complete Utility Relocations** **November 2011**

- **Begin Construction*** **November 2011**
- **Complete Construction*** **November 2013**

*The northern section of the Riverfront Boulevard project will be constructed in conjunction with the City of Dallas' Continental Avenue from Riverfront Boulevard to IH 35E reconstruction project. The Continental Avenue project is estimated to commence construction in July 2011, and the estimated construction duration is 18 months.

Questions and Discussion



THE TRINITY
DALLAS