

# Memorandum

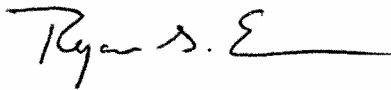


DATE: April 1, 2011

TO: Members of the Public Safety Committee

SUBJECT: **Community Engagement Unit**

Attached is briefing material on the "Community Engagement Unit" to be presented to the Members of the Public Safety Committee on Monday, April 4, 2011.



Ryan S. Evans  
First Assistant City Manager

Attachment

CC: Honorable Mayor and Members of the Dallas City Council

Mary K. Suhm, City Manager

Deborah Watkins, City Secretary

Tom Perkins, City Attorney

Craig Kinton, City Auditor

C. Victor Lander, Administrative Municipal Judge

Jill A. Jordan, P.E., Assistant City Manager

A.C. Gonzalez, Assistant City Manager

Forest E. Turner, Assistant City Manager

Jeanne Chipperfield, Chief Financial Officer

Helena Stevens-Thompson, Assistant to the City Manager Mayor/City Council



# Community Engagement Unit (CEU)

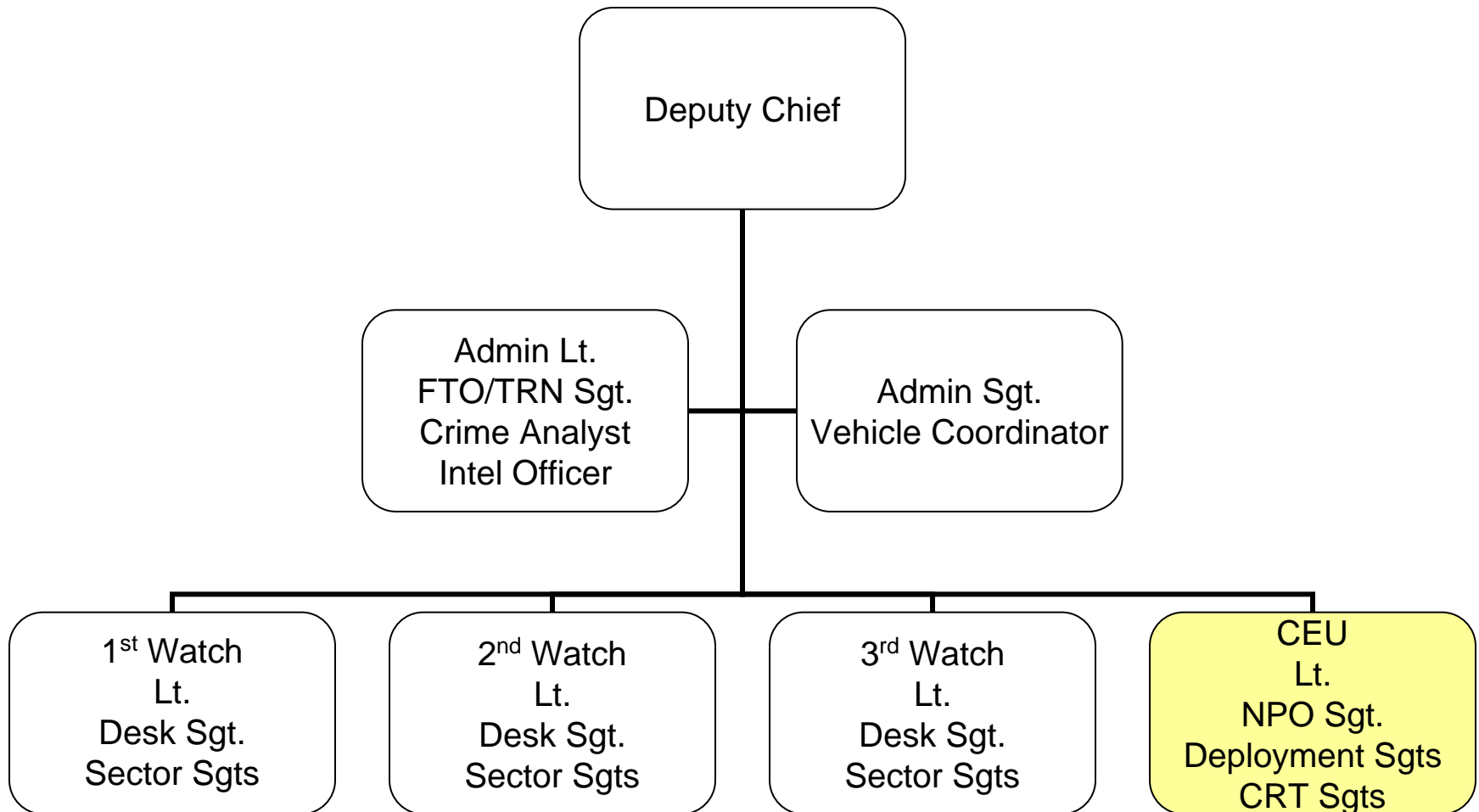
Public Safety Committee  
April 4, 2011



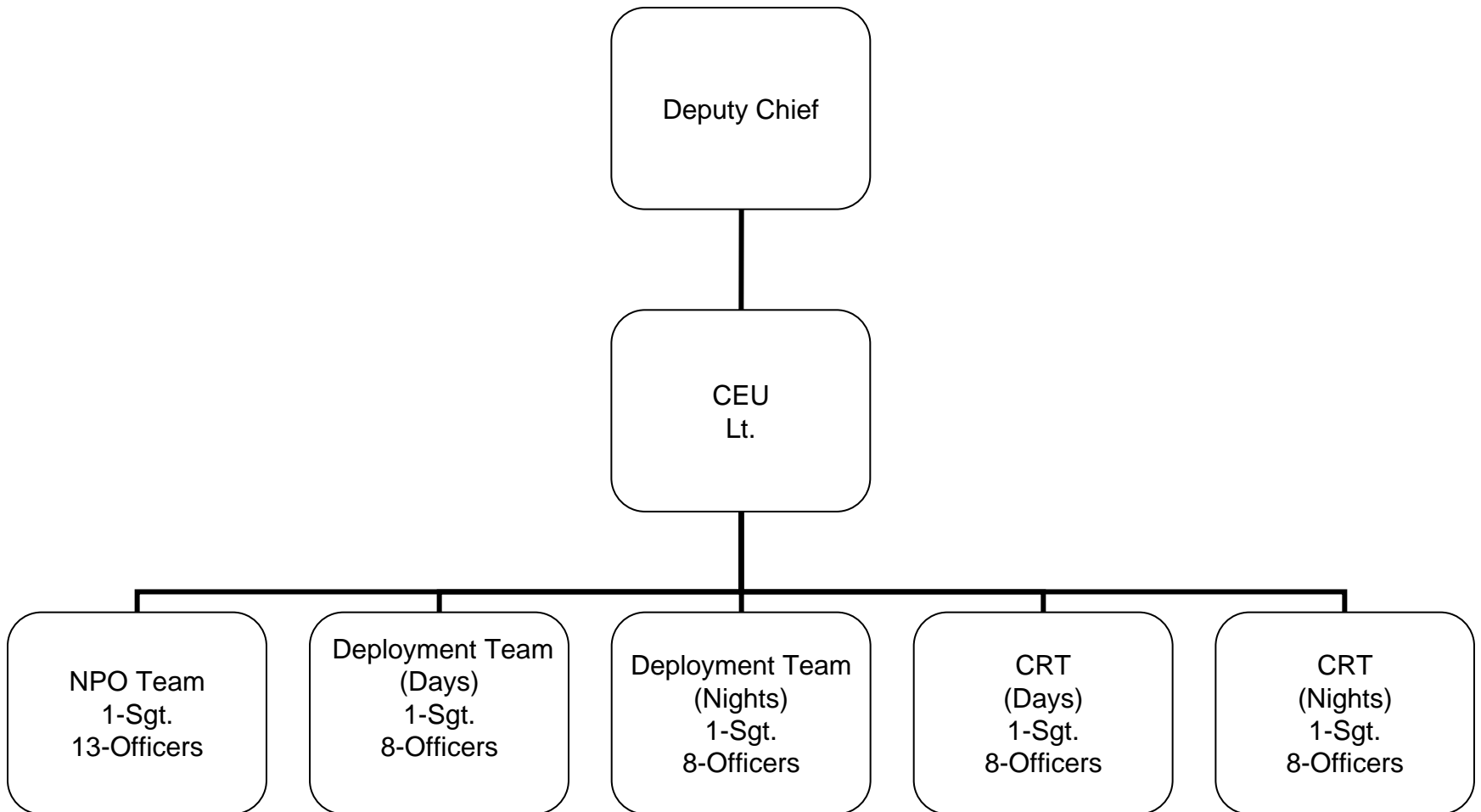
# Community Engagement Unit (CEU)

- Each Patrol Division is assigned a CEU
- Gives Patrol Commanders a sustainable and comprehensive approach in addressing the neighborhood problems quickly
- The Unit's mission is to effectively, efficiently, and collaboratively reduce crime
- The Unit's work schedule is flexible to address specific crime issues

# Patrol Division ORG Chart



# CEU ORG Chart



# CEU Staffing

- **A CEU consists of a Lieutenant supervising 3 teams:**
  - Deployment Unit Team: 2 squads, each consisting of:
    - 1 sergeant
    - 8 officers
  - CRT (Crime Response Team): 2 squads each consisting of:
    - 1 sergeant
    - 8 officers
  - NPO Team (Neighborhood Police Officer): 1 squad, consisting of:
    - 1 Sergeant
    - 12 officers
    - 1 SAFE detective

# Deployment Unit Team

- Undercover / Plainclothes officers
- Conduct covert surveillance on targeted suspects and/or locations determined by current intelligence and crime trends
- Utilize specialized training to locate and arrest suspects with warrants issued by various Investigative Units
- Collect/analyze /distribute criminal information with other units, departments, and agencies.
- Assist patrol officers by responding to offenses in progress

# Crime Response Team (CRT)

- Uniformed patrol officers
- Trained to conduct 'Knock-and-Talk' pertaining to initial drug complaints
- As a team approach, assist Divisional Deployment officers in arresting suspects
- Assist other DPD investigative units and outside agencies in the arrest of a suspect
- Trained to execute search / arrest warrants
- Provide extra (saturation) patrol to high crime areas, based on current actionable intelligence and crime trends



# Neighborhood Police Officer (NPO) Team

- Uniformed officers
- Form partnerships with citizens/businesses to proactively reduce crime through crime prevention and education programs (i.e. iWatch Dallas and other Social Media, HEAT, Operation ID, home security)
- Assist in organizing/coordinating neighborhood crime watches to include 10/70/20 project
- Oversee the Mandatory Crime Reduction Program, Convenience Store Program, and Gold Star Program

# NPO Team

- Oversee coordination of abating nuisance properties including the filing of SAFE cases if necessary
- Assist in special events (i.e. parades, safety fairs, National Night Out)
- Continue to encourage volunteerism for COPS, CHIPS, and VIP programs

# Advantages of CEU

- Opportunity to retool with fresh strategies and mission
- The CEU's problem solving tactics are incorporated with the geographic lieutenant, sector sergeant, and beat officers' mission in resolving neighborhood issues
- NPO, beat officers, and supervisors attend crime watch meetings to develop or maintain strong lines of communication
- CEU is sustainable resource that is not tied to call response

# Questions ?