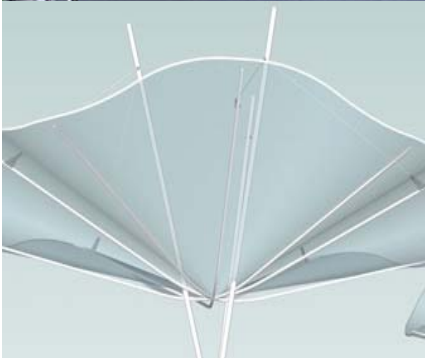




THE TRINITY
DALLAS



Texas Paddling Trail Program

Trinity River Corridor Project Committee

May 18, 2010



- To provide details of the Texas Paddling Trail Program
- To announce preliminary acceptance into the Texas Parks and Wildlife Department (TPWD) Texas Paddling Trail Program
- To provide benefits of the Texas Paddling Trail Program
- To outline City's responsibilities and next steps for inclusion into the Texas Paddling Trail Program



What is the Texas Paddling Trail (TPT) Program?

- The TPT Program is a partnership with TPWD to encourage paddling, angling and public access to Texas rivers and bays
 - Fosters a constituency for river conservation
 - Creates a sustainable economic development tool
- TPT Program Criteria includes the following:
 - Minimum of 4 paddling miles to maximum of 12 paddling miles
 - Presence of natural or historical attractions, unique habitat and wildlife diversity
 - Adequate flows
 - Population centers within 100 miles
 - Canoe/Kayak rentals available
 - Public access with designated parking

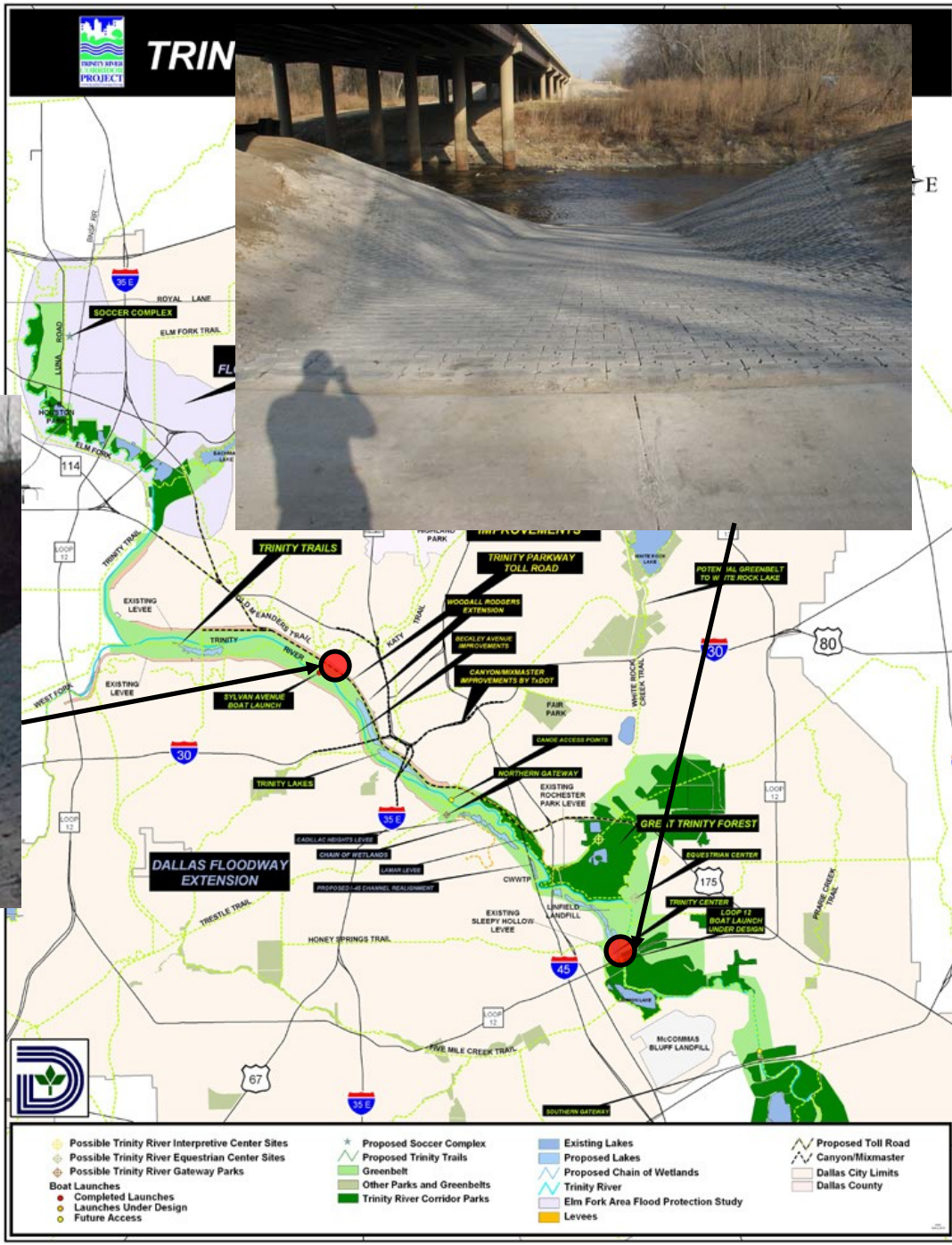


Trinity River Inclusion in Texas Paddling Trail (TPT) Program

- In February 2010, City staff submitted an application to TPWD for a segment of the Trinity River to be included in the TPT Program
- Application contained the following information:
 - 10 mile stretch of the Trinity River, from Sylvan Ave. to Loop 12
 - Designated parking at both put in and take out points
 - Description of wildlife, habitat and historic features along the Trinity River
 - Contact information for canoe/kayak rentals
- On April 23, 2010, Staff received a preliminary letter of acceptance into the TPT Program, contingent upon meetings and visual inspection of the river segment by TPWD staff



Trinity River segment for TPT Program



- TPWD will assist City staff with the following:
 - Develop site specific information for developing trail map
 - Promote the trail as part of the TPT program on TPWD website
 - Provide interpretive, conservation and river ethics information
 - Provide official TPT marker signage for roadways and put in/take out locations
 - Provide approved TPT kiosk design options, vinyl insert and estimated costs for kiosk construction



- City staff will provide the following:
 - Summary of historic & wildlife information, local attractions and community calendar for use in maps, kiosk and web content
 - Coordination with appropriate agencies (City, County, TxDOT) for TPT marker signage installation
 - Construction and maintenance of TPT informational kiosk at all put in/take out locations
 - Distribution of press release and hosting of launch event upon final acceptance into TPT program



- TPWD will provide plans for construction of informational kiosks at put in and take out points
- These simple, inexpensive plans can be built by City staff



Materials

- (1) 4"-round steel pipe - 20' long
- (1) 3"x3"x1/4" steel angle - 20' long
- (2) fence top caps for steel posts
- (1) Rustoleum rusty metal primer - quart
- (1) Rustoleum Hunter Green - quart
- (1) 4'x8'x3/4" treated plywood
- (2) 2"x6"x8' rough cedar
- (2) 1"x4"x8' cedar
- (1/2) box 3 1/2" coated deck screws
- (1/2) box 1 5/8" coated deck screws
- (1) box sd8 strong drive wafer screws
- (3) bags of ready-mix concrete
- (1) roll 2" masking tape
- (1) can 3M Super 77 adhesive spray

Tools

- Drill
- Drill Bits: 3/16" drill bit, Phillips head driver and Deck screw driver
- Circular saw
- Metal cut-off saw
- Hand grinder
- Speed square
- Arc welder
- Cutting torch
- Wheelbarrow and shovel for mixing concrete

Step 1

First build the removable, wooden display box. Cut 2"x6" cedar into two 53 3/4" boards and two 43 1/2" boards. Using coated 3 1/2" deck screws, screw the longer top and bottom boards onto the ends of the shorter side boards.

Cut 3/4" treated plywood for back: 53 3/4"x47". Lay on one side of box, align with box, and screw on with 1 5/8" deck screws.

Center and level laminated panel inside box and secure top edge with masking tape. Cut 1"x4" cedar for trim with 90 degree angles in corners. Two are 43 1/2" on the short side and two are 36 1/2" on the long side. Hold the trim up to panel and make sure they slightly overlap the colored display. Adjust panel as necessary. When properly aligned, remove trim and lift bottom of panel and spray backboard with 3M Super 77. Carefully roll and press panel down from tape, and center outwards to backboard. Remove masking tape. Nail or screw on trim while being careful not to put nails or screws through panel paper, but through the lamination only.

- City staff will meet with TPWD staff in June 2010 to accomplish the following:
 - Discussion of timeline and answer questions
 - Site visits and river survey
 - Discussion and editing of Partnership Agreement
 - Plan future visits (if needed) and meetings to develop informational material
- Process for officially sanctioning this segment of the Trinity River for the TPT will take 2-6 months

