

Memorandum



CITY OF DALLAS

DATE June 17, 2010

TO Trinity River Corridor Project Committee Members:
David A. Neumann (Chairman) Vonciel Jones Hill
Steve Salazar (Vice-Chair) Delia Jasso
Mayor Pro Tem Dwaine Caraway Linda Koop
Deputy Mayor Pro Tem Pauline Medrano
Carolyn R. Davis

SUBJECT **Rochester Park Levee, Phase I**

At the next Trinity River Corridor Project Committee meeting on June 22, 2010, the attached briefing will be presented by Kevin Craig, P.E., Trinity River Corridor Project Director, United States Army Corps of Engineers (Corps). This briefing discusses improvements to the Rochester Park Levee.

Please contact me if you have questions.

Jill A. Jordan, P.E.
Assistant City Manager



THE TRINITY
DALLAS

Attachment

C: Honorable Mayor and Members of the City Council
Mary K. Suhm, City Manager
Ryan S. Evans, First Assistant City Manager
A.C. Gonzalez, Assistant City Manager
Forest E. Turner, Assistant City Manager
Jeanne Chipperfield, Chief Financial Officer
Deborah A. Watkins, City Secretary
Thomas P. Perkins, Jr., City Attorney
Craig D. Kinton, City Auditor
Judge C. Victor Lander
Helena Stevens-Thompson, Assistant to the City Manager
Frank Libro, Director, Public Information Office
Kelly High, Director, Trinity Watershed Management
Rebecca Rasor, P.E., Managing Director, Trinity River Corridor Project

ROCHESTER PARK LEVEE, PHASE I

City of Dallas, TX
Trinity River Corridor Project Committee

JUNE 22, 2010

Kevin L. Craig, P.E.
Director, Trinity River Corridor Project



Rochester Park Levee, Phase I

AGENDA

- ▶ **Project History**
- ▶ **Project Description**
 - Current Levee Location
 - Phase I Project Area / Map
- ▶ **Construction Process / Schedule**
 - Draining Lake / Fish Relocation
 - Other Facilities (Piers, Parking, Paths, Lights)
 - Municipal Street
- ▶ **Project Funding**
- ▶ **Future Actions (Phase II)**



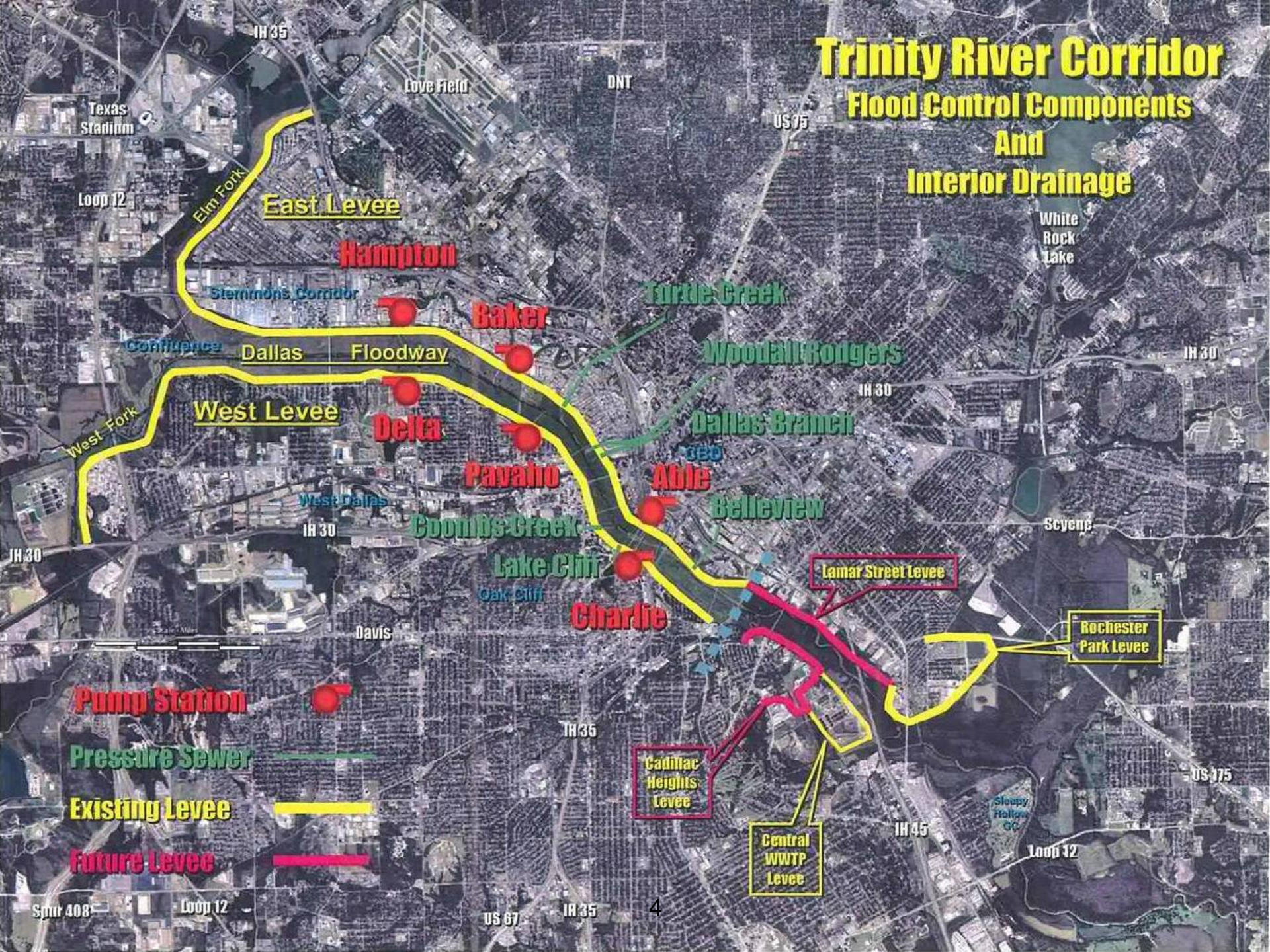
Rochester Park Levee, Phase I

► Project History

- City of Dallas and U.S. Army Corps of Engineers (USACE) have been partners in the Trinity River Corridor since the 1950's.
- Projects include the existing Dallas Floodway and the Dallas Floodway Extension, which is currently under construction
- 1991 – Rochester Park Levee constructed by City of Dallas
- 1996 – Congress added Rochester Park Levee to Dallas Floodway Extension (DFE) project
- 2010 – As part of ongoing construction, Rochester Park being modified to provide authorized level of protection



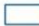

Trinity River Corridor Flood Control Components And Interior Drainage



Rochester Park Levee



Legend

-  Water Bodies
-  Rochester Levee

5



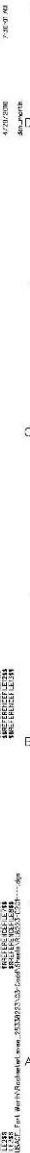
BUILDING STRONG®

Rochester Park Levee, Phase I

► Project Description

- Constructs approximately 2,200 linear feet of earthen levee
 - ▷ Removes 2 acres of 27-acre lake
- Replaces Mechanically Stabilized Earth (MSE) Wall
- Shifts alignment off TxDOT Right-of-Way along U.S. Hwy. 175
- Provides seepage control measures – prohibits water flow under levee
- Removes and rebuilds Municipal Street



[illegible][illegible][illegible][illegible][illegible][illegible][illegible][illegible][illegible]

Rochester Park Levee, Phase I

► Construction Process / Schedule

- Sep 2010 – Advertise construction contract
- Oct 2010 – Award construction contract
- Within 30 days after award:
 - ▷ Begin draining lake
 - *Requires 2-3 weeks to drain; allows fish harvesting*
 - *Water pumped directly to Rochester pump station*
 - *Fish transported to lake south of existing levee by trucks specifically designed for fish transport (aerated tubs)*
 - *Fish (e.g., sunfish, catfish, bass, bullhead minnows, maybe crappie) will be restocked into lake*
 - *Slope design for new levee will provide stable platform for native aquatic plants*
 - ▷ Begin earthwork
 - ▷ Begin removal/relocation of affected park facilities
 - *Sidewalk, park benches, trees, eastern part of the parking lot, bollards, fishing piers, lights at parking lot and ball field, power poles*



[illegible][illegible][illegible][illegible][illegible][illegible][illegible][illegible][illegible]

6/27/2003 11:40 AM

REF: REFERENCE FILE 245
REF: REFERENCE FILE 255

2007年12月25日

Journal of Management Education

- 23-0308-0000-0000-0000

2007-08-01

44445
44445
44445

06-07-2011 11:23:59
06-07-2011 11:33:59

Rochester Park Levee, Phase I

► Construction Process / Schedule (cont'd)

- 4 – 5 months after construction start – Allow lake to begin refilling
- 8 – 10 months – Complete earthwork
- Oct 2011 – Complete flood protection project
 - ▷ Earthen levee sufficient for 100-year certification to be completed prior to Aug 2011
- Spring 2012 – Complete restoration / replacement of park facilities



Rochester Park Levee, Phase I

► Project Funding

- Cost-shared project between the Corps of Engineers and City of Dallas
- Federal Funds – Construction
- City Funds – Real Estate acquisition; Relocation of facilities/utilities
- Phase I Project Costs – Estimated at \$10M - \$15M



Rochester Park Levee, Phase I

► Future Actions (Phase II)

- Remainder of Rochester Park Levee being investigated to determine if levee meets current Corps design standards and required level of protection
- No future impacts to lake or park area anticipated
- Levee access will be limited during construction
- Increased amount of construction traffic during construction

