

Memorandum



CITY OF DALLAS

DATE July 29, 2010

TO Trinity River Corridor Project Committee Members:
David A. Neumann (Chairman) Vonciel Jones Hill
Steve Salazar (Vice-Chair) Delia Jasso
Mayor Pro Tem Dwaine Caraway Linda Koop
Deputy Mayor Pro Tem Pauline Medrano
Carolyn R. Davis

SUBJECT Trinity River Levee System Emergency Action Plan Overview

At the next Trinity River Corridor Project Committee meeting on August 3, 2010, the attached Trinity River Levee System Emergency Action Plan Overview will be presented by Kelly High, Director, Trinity Watershed Management. This briefing provides an overview of the City's planning and operational processes to address emergency events with respect to the levees. The City does not anticipate imminent failure of the Trinity River Levee System; however, it is important that we make you aware of the protocol and response should this Emergency Action Plan need to be exercised.

Please contact me if you have questions.

Jill A. Jordan, P.E.
Assistant City Manager



THE TRINITY
DALLAS

Attachment

C: Honorable Mayor and Members of the City Council
Mary K. Suhm, City Manager
Ryan S. Evans, First Assistant City Manager
A.C. Gonzalez, Assistant City Manager
Forest E. Turner, Assistant City Manager
Jeanne Chipperfield, Chief Financial Officer
Deborah A. Watkins, City Secretary
Thomas P. Perkins, Jr., City Attorney
Craig D. Kinton, City Auditor
Judge C. Victor Lander
Helena Stevens-Thompson, Assistant to the City Manager
Frank Libro, Director, Public Information Office
Kelly High, Director, Trinity Watershed Management
Rebecca Rasor, P.E., Managing Director, Trinity River Corridor Project



Trinity River Levee System Emergency Action Plan Overview

Trinity River Corridor Project Committee
August 3, 2010





Trinity River Emergency Action Plan

- It is important to note that the levees we have today are the same levees that have protected us over the years, but every critical system needs a contingency plan
- The City of Dallas continues to maintain a Master Emergency Operations Plan (MEOP) to address emergency events
- The Trinity River Levee Emergency Action Plan is an effort to proactively address the specifics of an emergency levee event



Trinity River Emergency Action Plan

- The purpose of this Emergency Action Plan (EAP) is to establish procedures to be followed in the event of an emergency associated with the Trinity River Levee system along the Trinity River.
- The Trinity River Levee system consists of the Dallas Floodway East and West Levees, the Rochester Levee, and the Central Wastewater Treatment Plant (CWWTP) Levee.



What is an EAP?

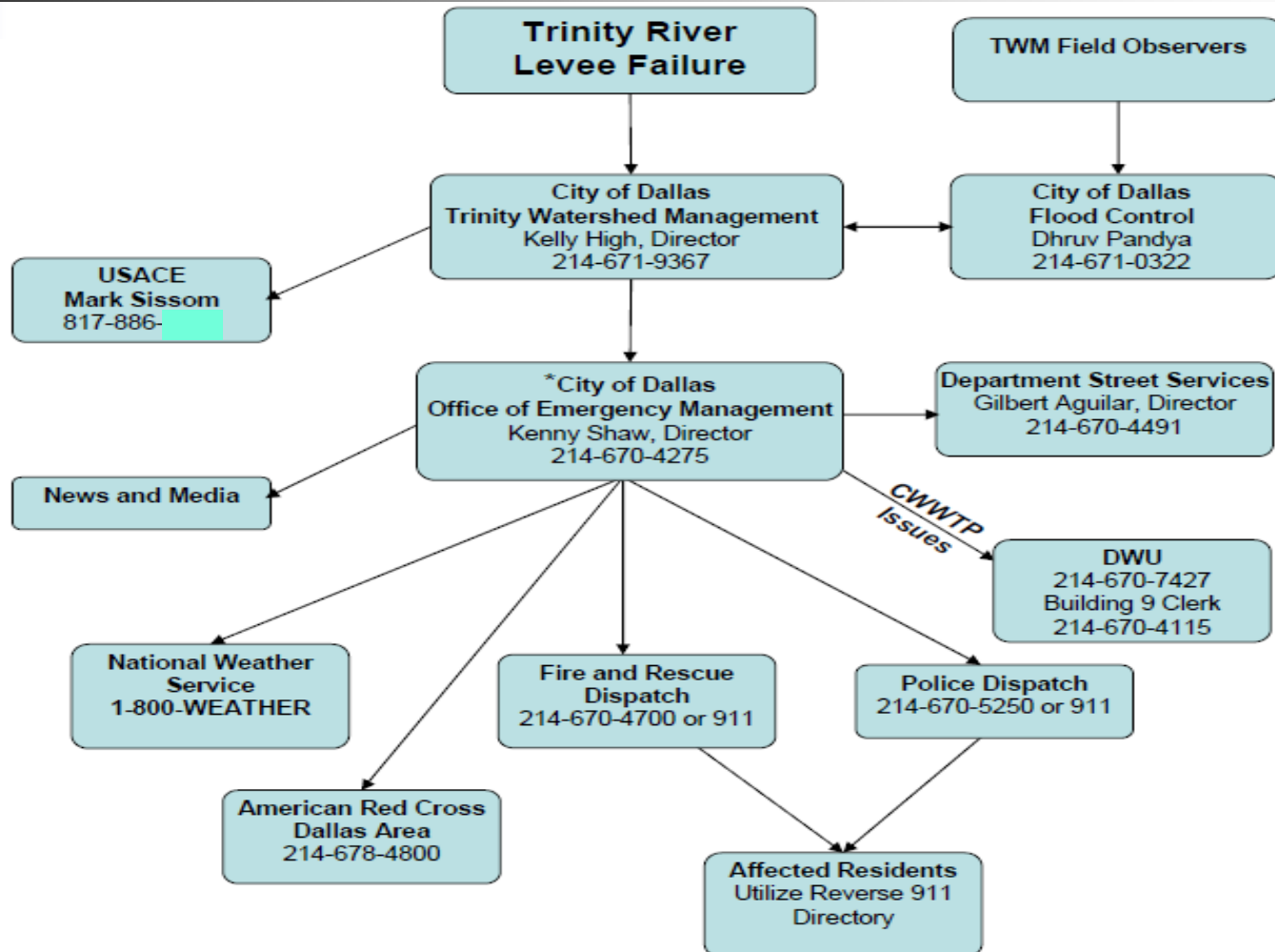
- An **Emergency Action Plan (EAP)** is a formal document that identifies potential emergency conditions and specifies preplanned actions to be followed to minimize property damage and loss of life. An EAP identifies:
 - Actions to be taken for different emergency levels, beginning with notification flowcharts
 - Roles parties will take to alert and evacuate citizens to safe locations
 - Critical areas where emergency response personnel will be needed to evacuate the population if needed.



Basic Components of the EAP

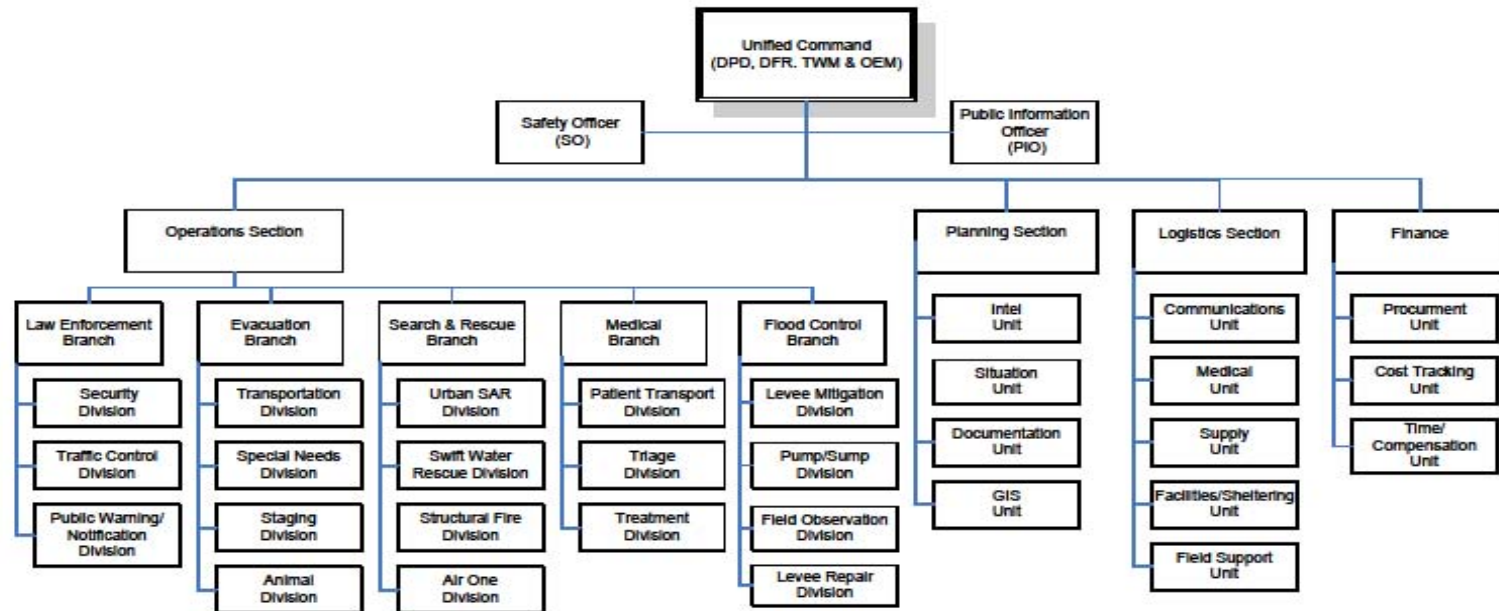
- Emergency Staffing Notifications
- Incident Command Structure
- General Responsibilities
- Communication Plan
- Evacuation Plan
- Shelter Plan
- Recovery

Emergency Staffing Notification



Emergency Operations Staffing

Incident Command Structure - Trinity Levee Breach





General Responsibilities

- Mayor or County Judge
 - Request mandatory evacuation (Mayor or County Judge - pursuant to state law)
 - Declaration of local disaster and any extension
- City Manager
 - Ensure EAP is implemented and updated
 - Manage the City's response efforts in an emergency event



General Responsibilities

- Trinity Watershed Management
 - Provide levee inspections and determine emergency classification levels
 - Report flooding conditions and critical flooding issues
 - Identify areas of concern and flood maps
 - Take lead role in flood fighting responsibilities
 - Monitor and report on weather and river levels



General Responsibilities

- Office of Emergency Management
 - Activate the Emergency Operations Center (EOC)
 - Coordinate the emergency response efforts of the Police, Fire-Rescue, Parks, Streets and outside agencies
 - Contact and update key department personnel
 - Coordinate and communicate emergency warnings
 - Request that a mandatory evacuation order be issued from the Mayor, if necessary.



General Responsibilities

- Dallas Fire-Rescue
 - Lead emergency rescue efforts
 - Lead water rescue efforts
 - Assist in evacuation and notification
- Dallas Police Department
 - Lead evacuation efforts and assist in notification
 - Control evacuation routes and traffic
 - Enforce laws and protect lives during evacuation
 - Protect property in evacuated areas



General Responsibilities

- Park and Recreation
 - Provide shelter space at community recreation centers
- Street Services
 - Assist emergency response efforts with personnel, supplies and equipment needs
 - Assist Police with traffic control and barricades
- Dallas Water Utilities
 - Takes the lead related emergency levee response at the Central Waste Water Treatment Plant
 - Assist emergency response efforts with personnel, supplies and equipment needs



General Responsibilities

- Public Information Office
 - Press conference coordination
 - Media alerts and information
 - City website notification and information
- Code Compliance
 - Temporary animal shelters
 - Structural assessment in recovery



Outside Agency Assistance

- American Red Cross
 - Lead mass care and sheltering operations
- Texas Division of Emergency Management
 - Texas National Guard resources
 - Other State assets
- Other Regional Assistance
 - Public safety assistance from other cities



Public Communication Plan

- The general public will be notified of developing emergency situations by:
 - Emergency Operation Center press conferences/press releases
 - News broadcasts (radio and television)
 - Cable override
 - Reverse 911
 - City Website Notification and Information
 - Emergency Alert System (EAS)
 - Police and Fire notification in the neighborhoods



Evacuation Plan

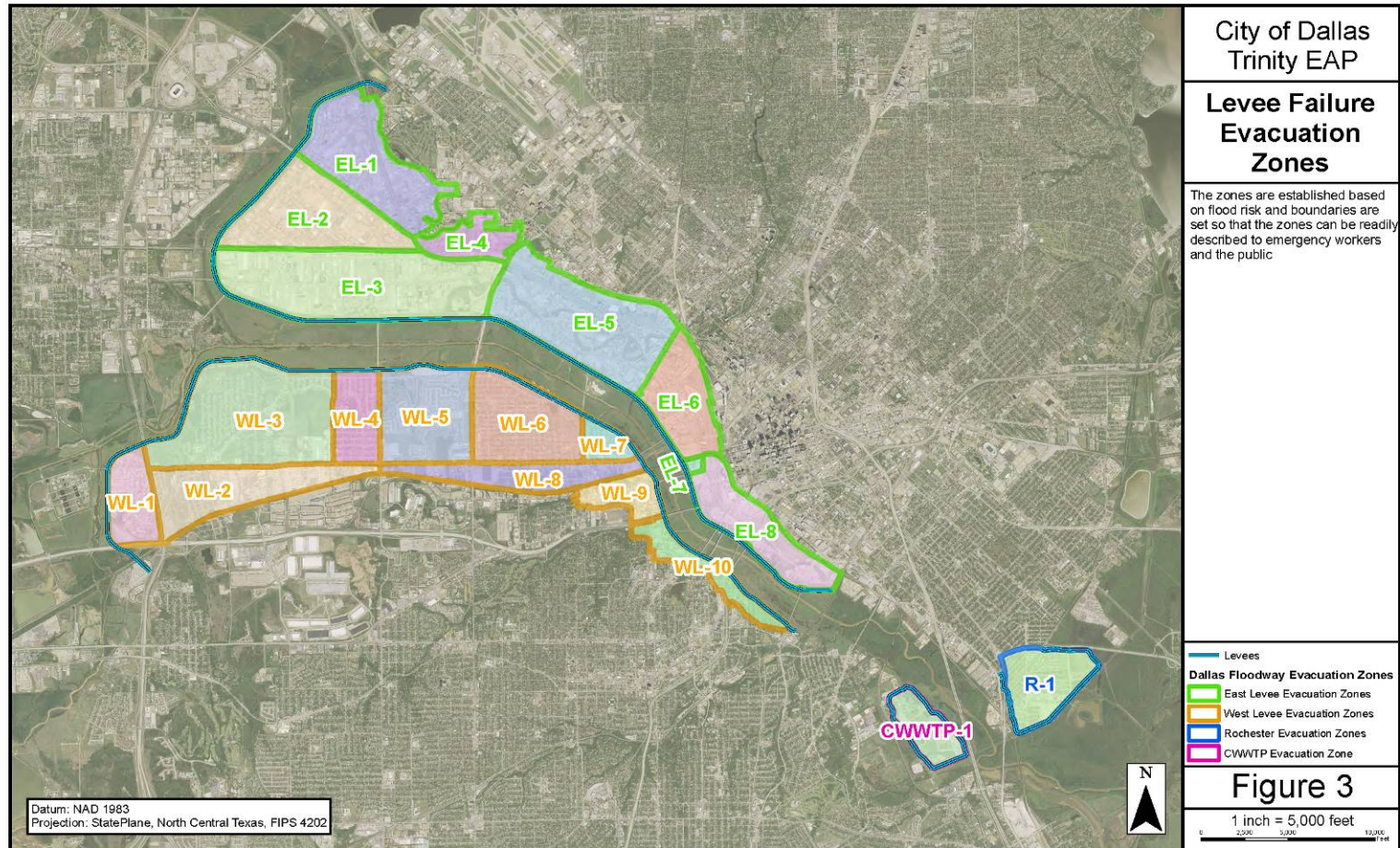
- Evacuation is a means of protecting the public by moving people away from a hazard.
- State Law provides a county judge or mayor with the authority to order an evacuation
 - Voluntary evacuation is preferred, but some emergency situations may call for mandatory evacuations
- Critical components of an evacuation plan include:
 - Evacuation Routes/Zones
 - Transportation and traffic control



Trinity River Evacuation Zones

- East, West, Rochester and CWWTP levees have been broken down into 20 evacuation zones
 - East Levee (8 zones)
 - West Levee (10 zones)
 - Rochester (1 zone)
 - CWWTP (1 zone)
- Zones were established based on risk, major thoroughfare boundaries, and to create identifiable areas for the public and emergency workers.

Evacuation Zone Map

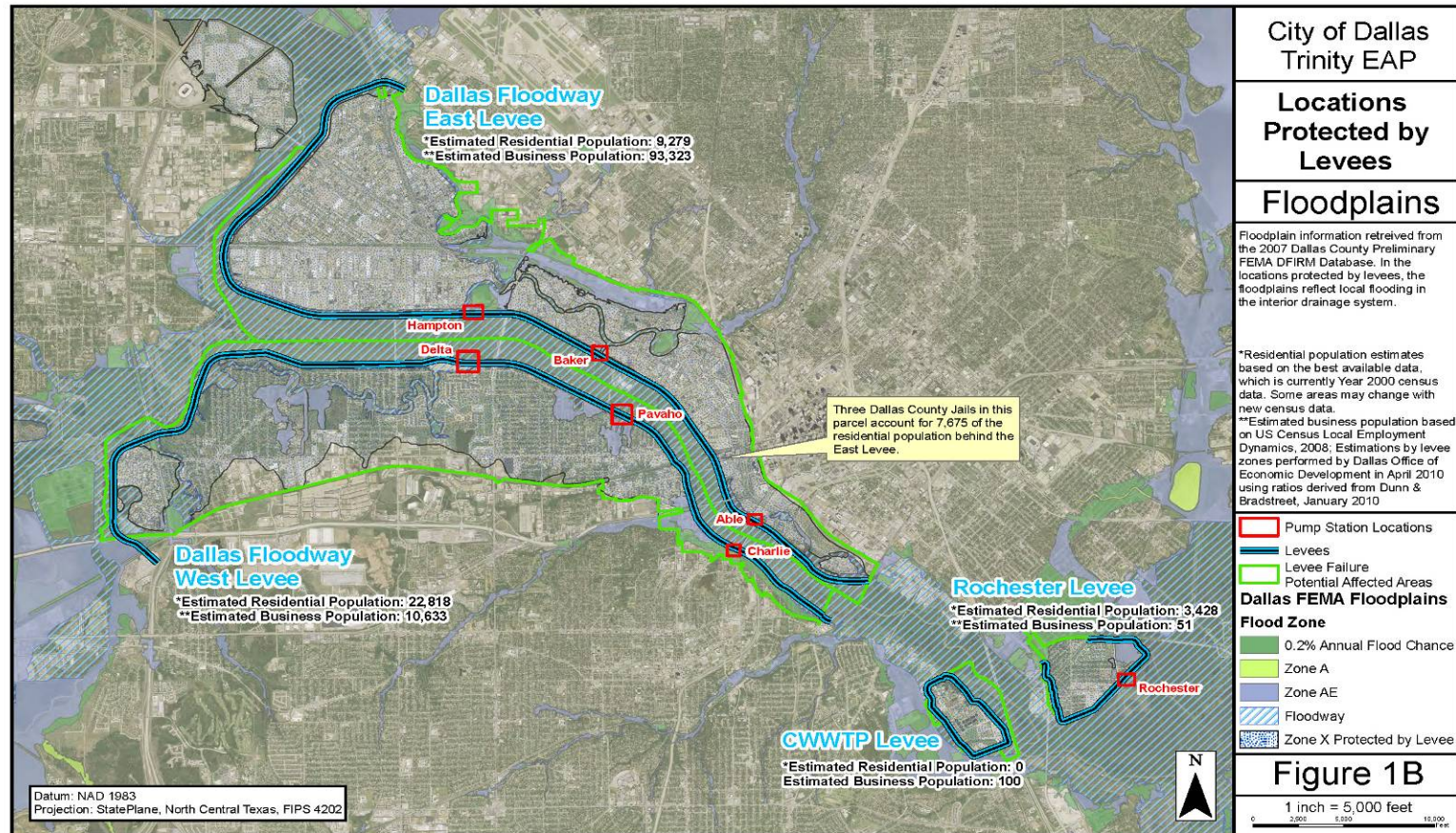




Evacuation Zone – Populations

- Within each zone the population estimates were categorized into residential and business
- Special needs population also identified
 - Over 65
 - Disabled
 - Schools
 - Childcare Facilities
 - Hospitals

Evacuation Zones – Population Estimates

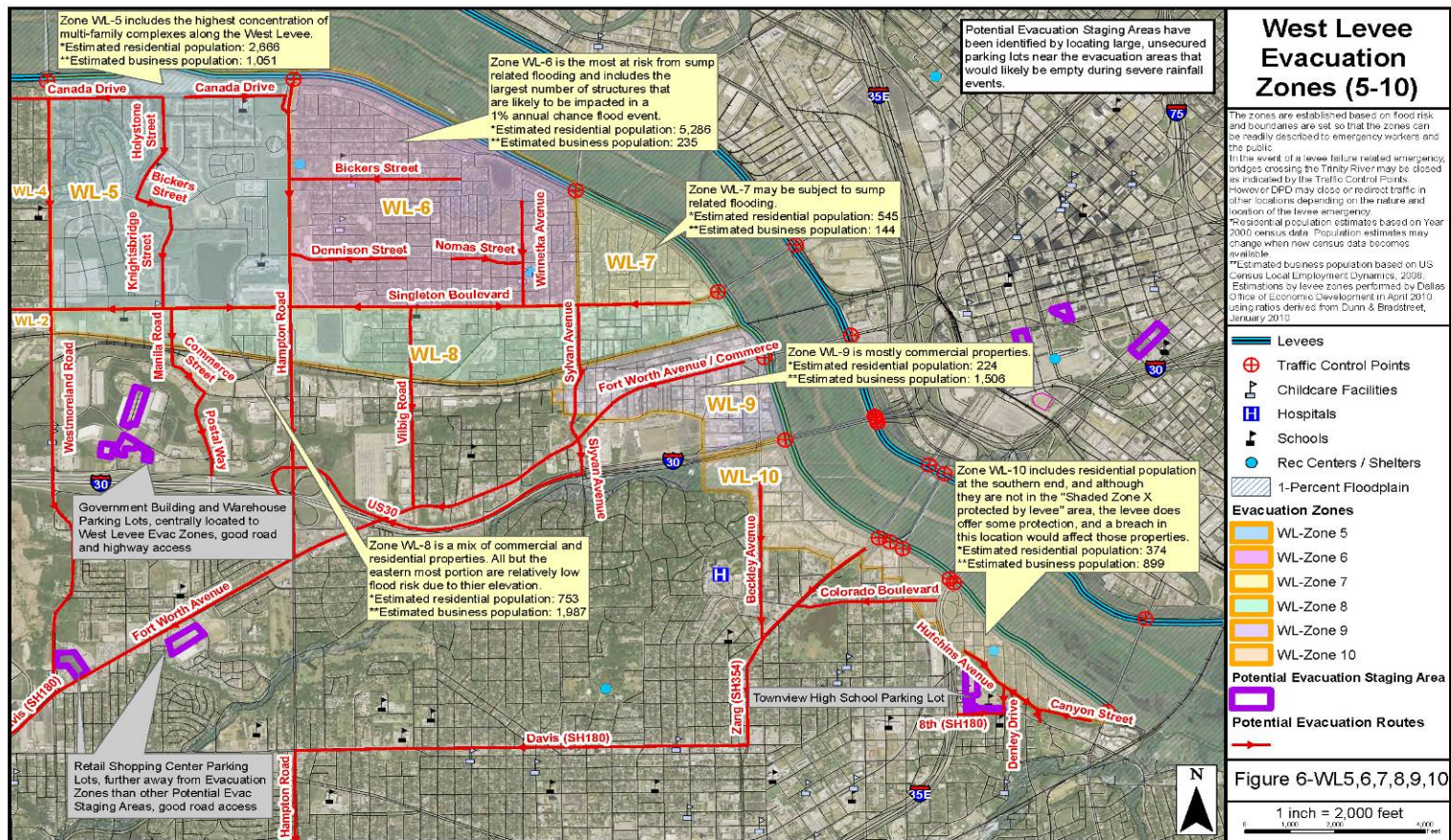




Evacuation Zone Routes

- Recommended evacuation routes were identified per zone to limit traffic congestion and expedite egress
- Routes/roads chosen were typically large arterials with road surfaces elevated higher than local streets
- Traffic control points identified to restrict ingress/egress and assist evacuation
- Residents needing evacuation assistance will be encouraged to call 911

Example - Zone Routes





Evacuation Assistance

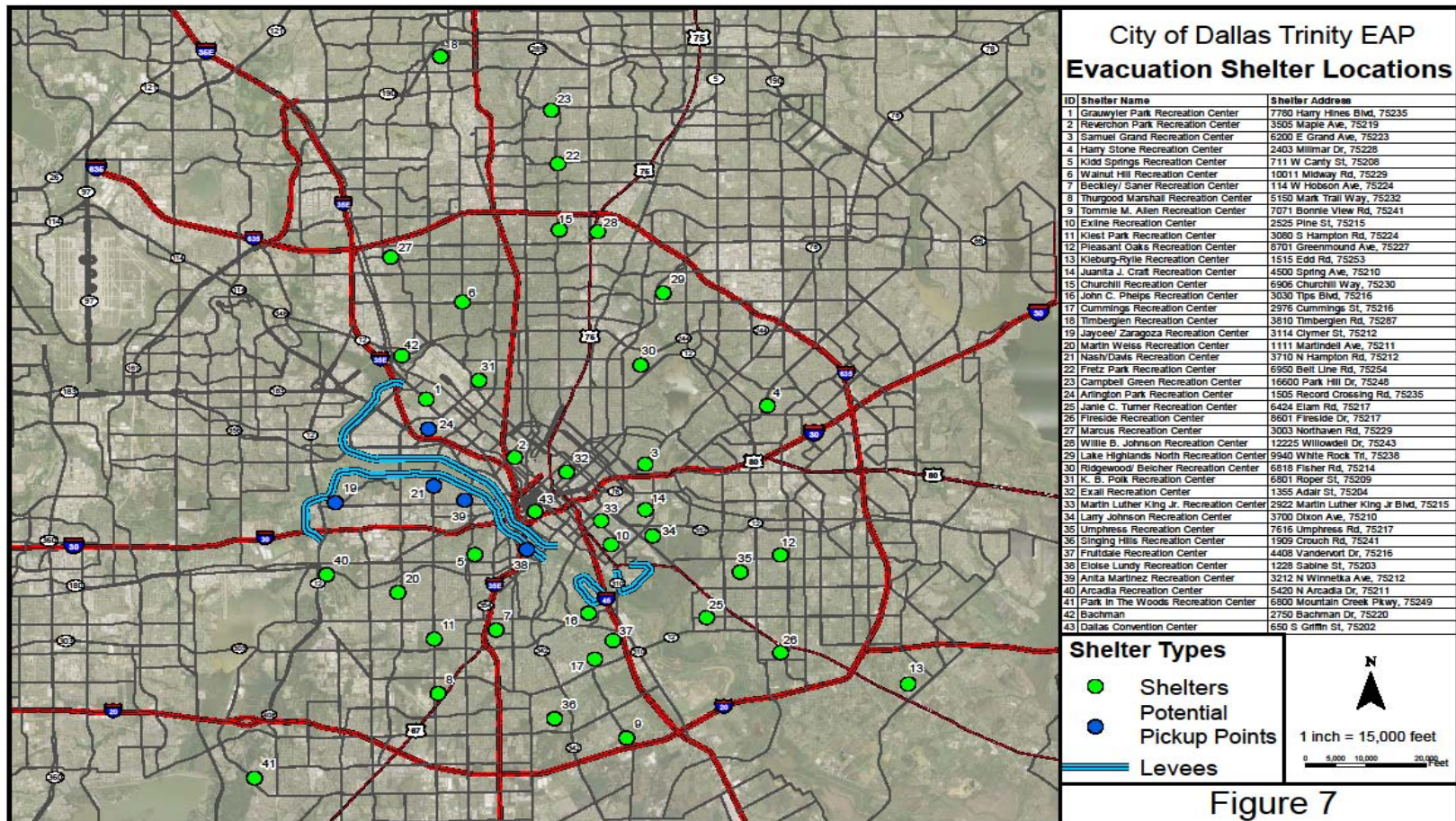
- Dallas County School buses will evacuate school children and assist with other special needs request
- Dallas Area Rapid Transit could potentially assist in evacuation efforts (depending on availability)



Shelter Locations

- Recreation Centers will be used as primary shelter facilities
- 42 Dallas recreation centers have been identified in areas outside the evacuation zones
- American Red Cross will assist in mass care and sheltering operations

Shelter Locations





Recovery

- If a disastrous event occurs, recovery will be a critical component
 - Potential request for state and federal assistance and declaration of disaster
 - Damage assessments
 - Health and safety assessments
 - Security and public safety
 - Clean up and debris management
 - Recovery efforts detailed in the Dallas Master Emergency Operations Plan (MEOP)



EAP Table Top

- Office of Emergency Management recently conducted a EAP table top exercise
 - Examples of lessons learned from exercise
 - Need to identify locations with hazardous chemicals
 - Ensure departments have updated internal notification plans
 - Need for additional flood mapping (breach analyses)
 - Need to conduct training for response personnel to become familiar with EAP plan
 - Refine listing of private schools, childcare, long-term care and assisted living facilities



Next Steps

- Conduct a public information campaign related to this Emergency Action Plan and FEMA remapping
 - Emergency and Evacuation preparedness
 - Community meetings
 - Linkages of information on City website
 - “KnoWhat2do. Com” checklist – Appendix A
 - Floodplain and flooding:
 - National Flood Insurance Program (FEMA)
 - Turn Around Don’t Drown (NOAA)



Next Steps

- Continue to refine and update EAP
- Continue community data collection
 - Refine listing of special needs population, private schools, childcare, long-term care and assisted living facilities
 - Promote the registration of cell phones for access to Reverse 911 system

Appendix - A



EMERGENCY SUPPLY KIT CHECKLIST

Pack supplies in a duffel bag, suitcase or storage container and keep it in an easily accessible place. Remember: check and update your kit every year—test batteries, check expiration dates and update important documents.

- ☐ **WATER**
one gallon of water per person per day for at least three days, for drinking and sanitation
- ☐ **FOOD**
at least a three-day supply of non-perishable food
- ☐ **RADIO**
Battery-powered or hand crank radio and a NOAA Weather Radio with tone alert and extra batteries for both
- ☐ **FLASHLIGHT**
with extra batteries
- ☐ **FIRST-AID KIT**
- ☐ **WHISTLE**
to signal for help
- ☐ **DUST MASK**
to help filter contaminated air and plastic sheeting and duct tape to shelter-in-place
- ☐ **PERSONAL SANITATION**
Moist towelettes, garbage bags and plastic ties
- ☐ **WRENCH OR PLIERS**
to turn off utilities
- ☐ **CAN OPENER**
for canned food, make sure it's a manual can opener
- ☐ **LOCAL MAPS**
- ☐ **CASH**
in case ATMs are unavailable or something prevents the use of credit/debit cards

Don't forget to include critical items for:

- ☐ **SPECIAL NEEDS FAMILY MEMBER**
Medications, special foods, medical equipment
- ☐ **INFANTS**
formula, diapers, bottles
- ☐ **PETS**
food, leash, medications

And items you'll need in your vehicle:

If you're on the road when an emergency strikes or you have to evacuate, you'll want to have these supplies on hand.

- ☐ **FLASHLIGHT**
with extra batteries
- ☐ **FIRST-AID KIT AND MANUAL**
- ☐ **WHITE DISTRESS FLAG**
- ☐ **BOTTLED WATER**
- ☐ **NON-PERISHABLE FOOD ITEMS**
- ☐ **SEASONAL SUPPLIES**
to combat weather condition like blankets, gloves, etc.
- ☐ **AUTO REPAIR SUPPLIES**
Tire repair kit, booster/jumper cables, pump and flares
- ☐ **LOCAL MAPS**

Additional personal items:

.....

.....

.....