

# Memorandum



DATE July 29, 2010

TO Trinity River Corridor Project Committee Members:  
David A. Neumann (Chairman)                      Vonciel Jones Hill  
Steve Salazar (Vice-Chair)                      Delia Jasso  
Mayor Pro Tem Dwaine Caraway                      Linda Koop  
Deputy Mayor Pro Tem Pauline Medrano  
Carolyn R. Davis

SUBJECT **West Dallas Gateway**

At the next Trinity River Corridor Project Committee meeting on August 3, 2010, the attached briefing will be presented by David Whitley, Dallas CityDesign Studio. This briefing provides an update on the schematic design underway by the Studio for the western gateway to the Continental Bridge.

Please contact me if you have questions.



Jill A. Jordan, P.E.  
Assistant City Manager



THE TRINITY  
DALLAS

Attachment

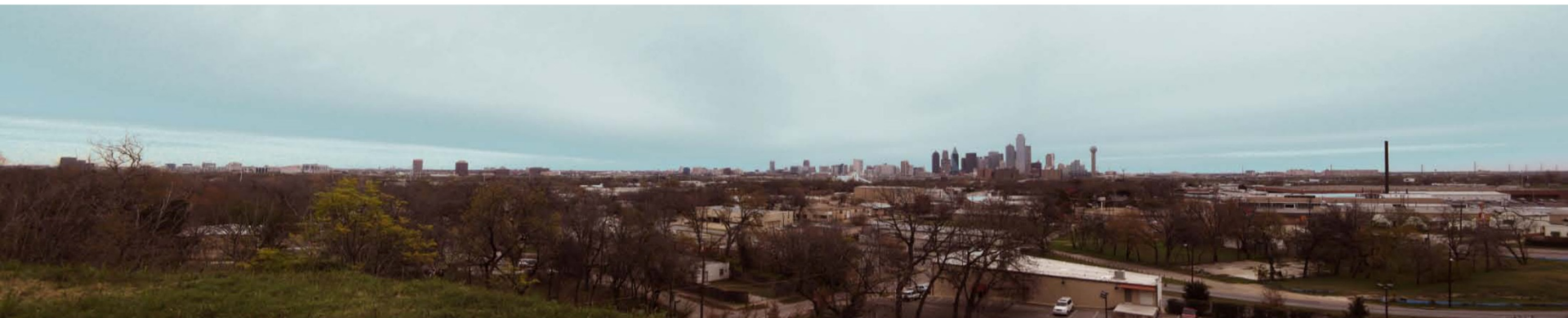
C: Honorable Mayor and Members of the City Council  
Mary K. Suhm, City Manager  
Ryan S. Evans, First Assistant City Manager  
A.C. Gonzalez, Assistant City Manager  
Forest E. Turner, Assistant City Manager  
Jeanne Chipperfield, Chief Financial Officer  
Deborah A. Watkins, City Secretary  
Thomas P. Perkins, Jr., City Attorney  
Craig D. Kinton, City Auditor  
Judge C. Victor Lander  
Helena Stevens-Thompson, Assistant to the City Manager  
Frank Libro, Director, Public Information Office  
Kelly High, Director, Trinity Watershed Management  
Rebecca Rasor, P.E., Managing Director, Trinity River Corridor Project





\$1.8 million from 2006 bond election

gateway to function as a major portal from West Dallas to  
the Continental Pedestrian Bridge





Beckley/Canada at Singleton intersection under construction as part of TxDOT's project constructing the Margaret Hunt Hill Bridge

design is underway for the Continental bridge

significant coordination with TxDOT & WRT adjacent projects

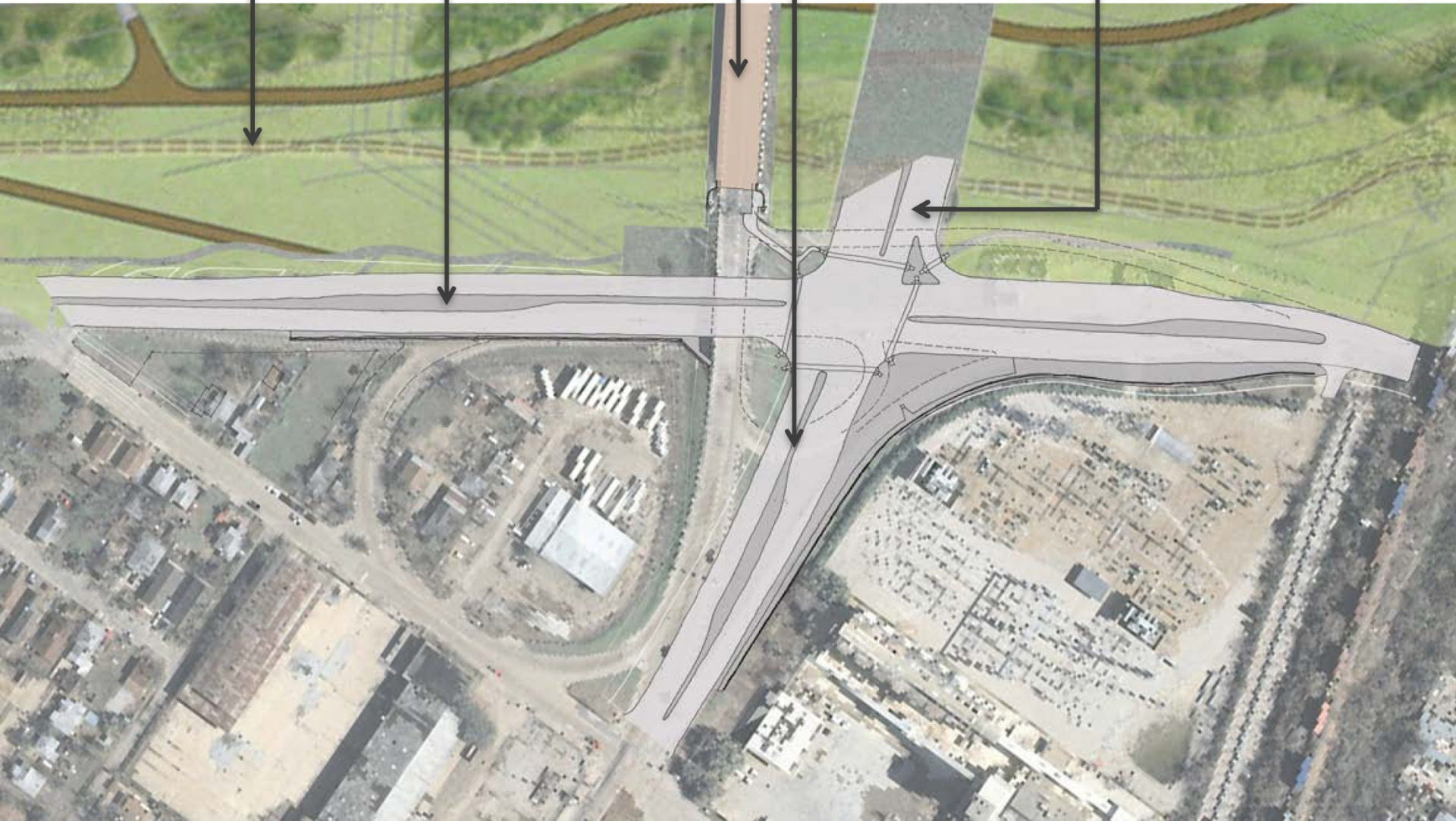
no impact to the construction timeline for Margaret Hunt Hill Bridge

seamless pedestrian connection to adjacent Continental Bridge





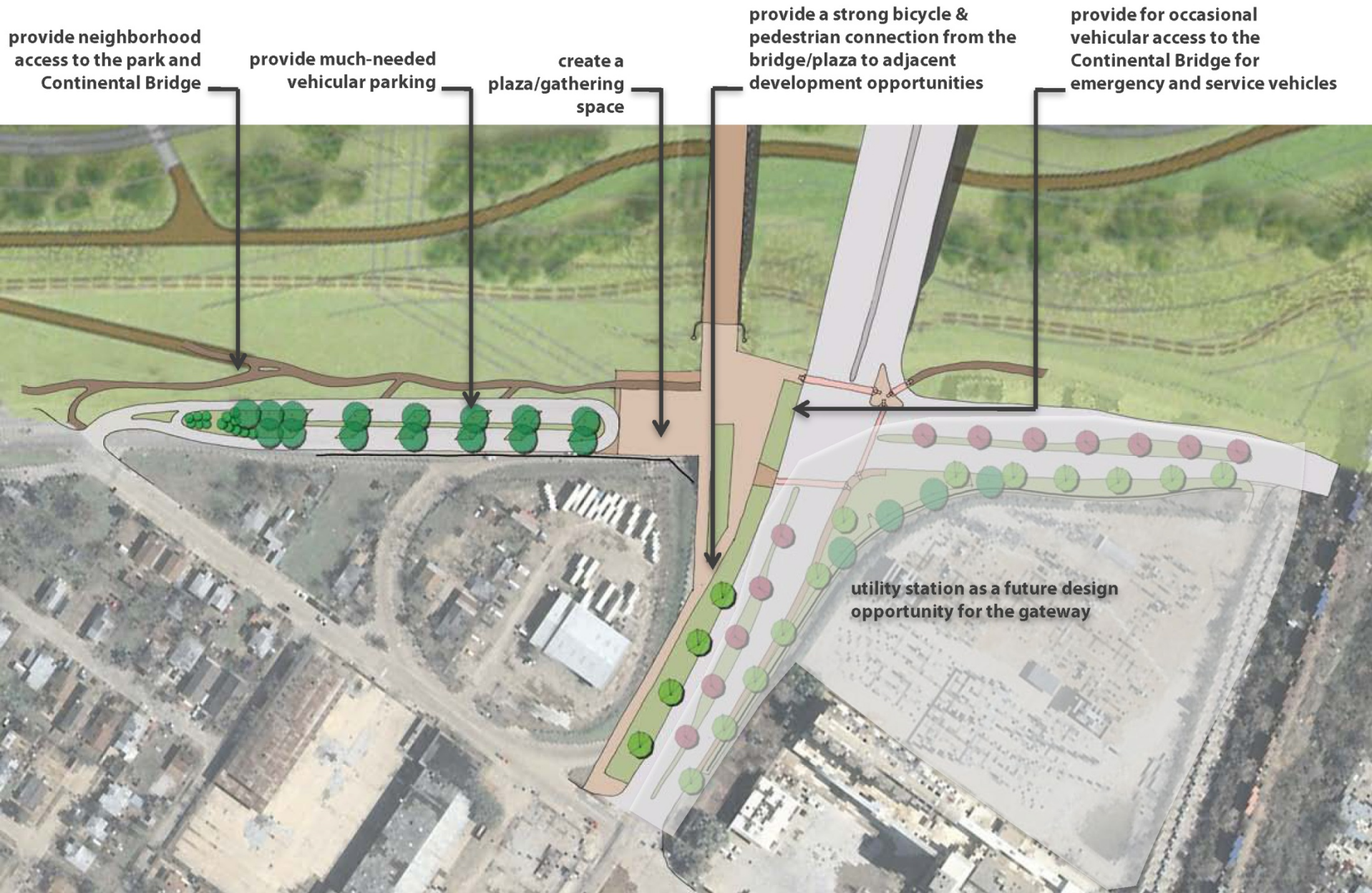
levee top      canada drive      continental  
pedestrian bridge      singleton avenue      margaret hunt hill bridge



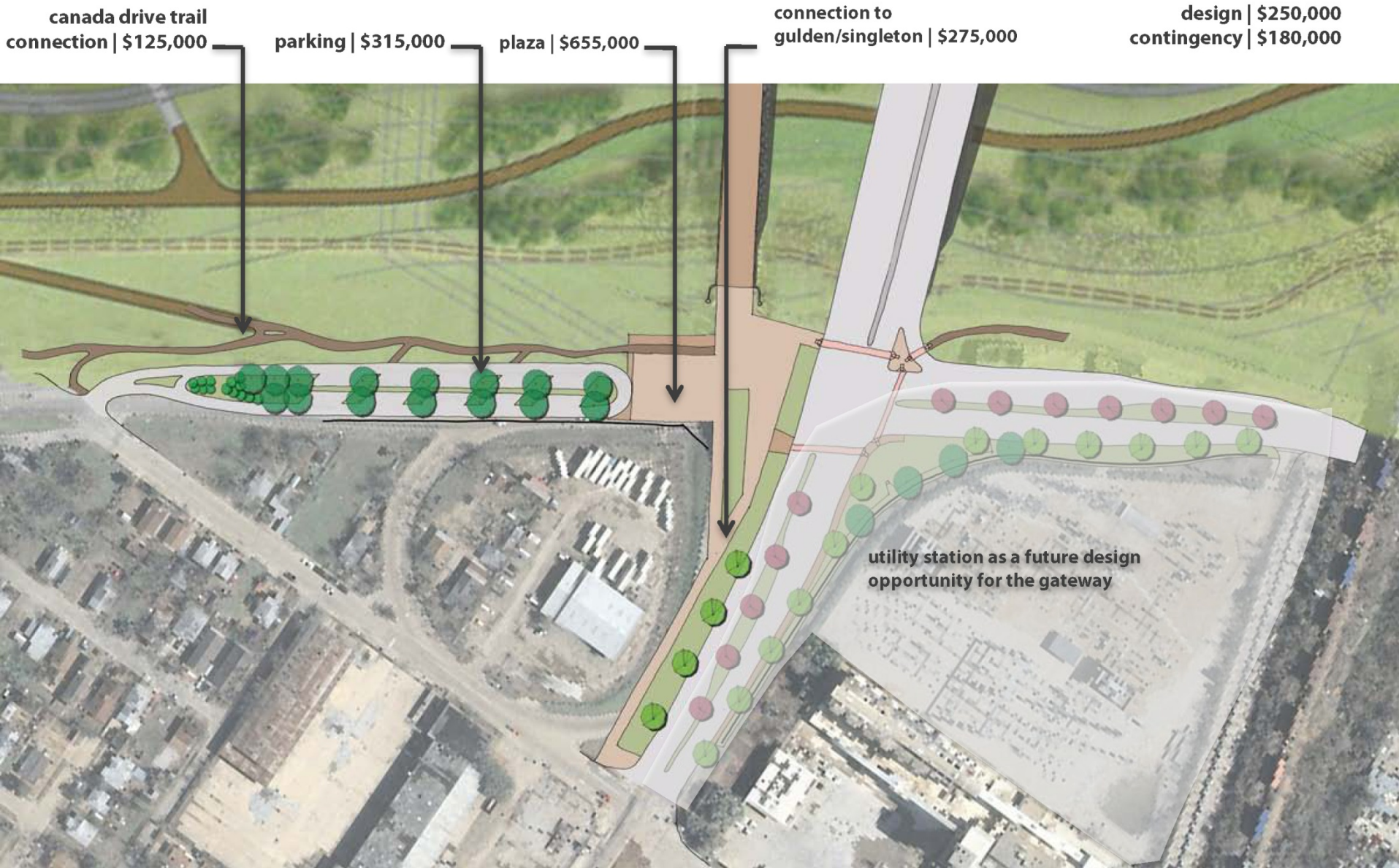
TxDOT reconfigured intersection

dallas citydesign studio | 04









**estimated cost | \$1.8M**

**bond money available | \$1.8M**

streetscape improvements to gulden, singleton, and beckley part of a future phase with potential public art enhancement to the oncor station













- 1 | committee feedback on proposed concept
- 2 | city**design** studio to continue gather input in September/October on design program/schematic design from West Dallas stakeholders: residents/businesses/organizations. initial conversations regarding the concept have taken place
- 3 | city**design** studio to refine design concept based upon committee and community input & assist in rfq preparations
- 4 | rfp process to begin in november to hire design team
- 5 | design team to complete detailed design with continued public input through design development
- 4 | construction to commence following MHH Bridge completion in 2011& coordinated with Continental Pedestrian Bridge conversion

