

Memorandum



CITY OF DALLAS

DATE September 12, 2008


TO Trinity River Committee Members:
David A. Neumann (Chair)
Mayor Pro Tem Dr. Elba Garcia (Vice-Chair)
Deputy Mayor Pro Tem Dwaine Caraway
Carolyn R. Davis
Linda Koop

Pauline Medrano
Mitchell Rasansky
Steve Salazar

SUBJECT Trinity River Corridor Project
Margaret Hunt Hill Bridge

The attached briefing will be presented to the Council Trinity River Corridor Project Committee at the September 16, 2008 meeting. The presenter will be Bill Hale, P.E., District Engineer – Dallas, Texas Department of Transportation. The briefing will provide an update of the progress and schedule for the Margaret Hunt Hill Bridge span and the Approach spans.

If you have additional questions, please let me know.

for 
Jill A. Jordan, P.E.
Assistant City Manager



THE TRINITY
DALLAS

Attachment

c: Honorable Mayor and Members of the City Council
Mary K. Suhm, City Manager
Ryan S. Evans, First Assistant City Manager
Ramon F. Miguez, P.E., Assistant City Manager
A. C. Gonzalez, Assistant City Manager
David O. Brown, Interim Assistant City Manager
David K. Cook, Chief Financial Officer
Deborah A. Watkins, City Secretary
Thomas P. Perkins, Jr., City Attorney
Craig D. Kinton, City Auditor
Judge C. Victor Lander
Helena Stevens-Thompson, Asst. to the City Manager
Frank Libro, Director, Public Information Office

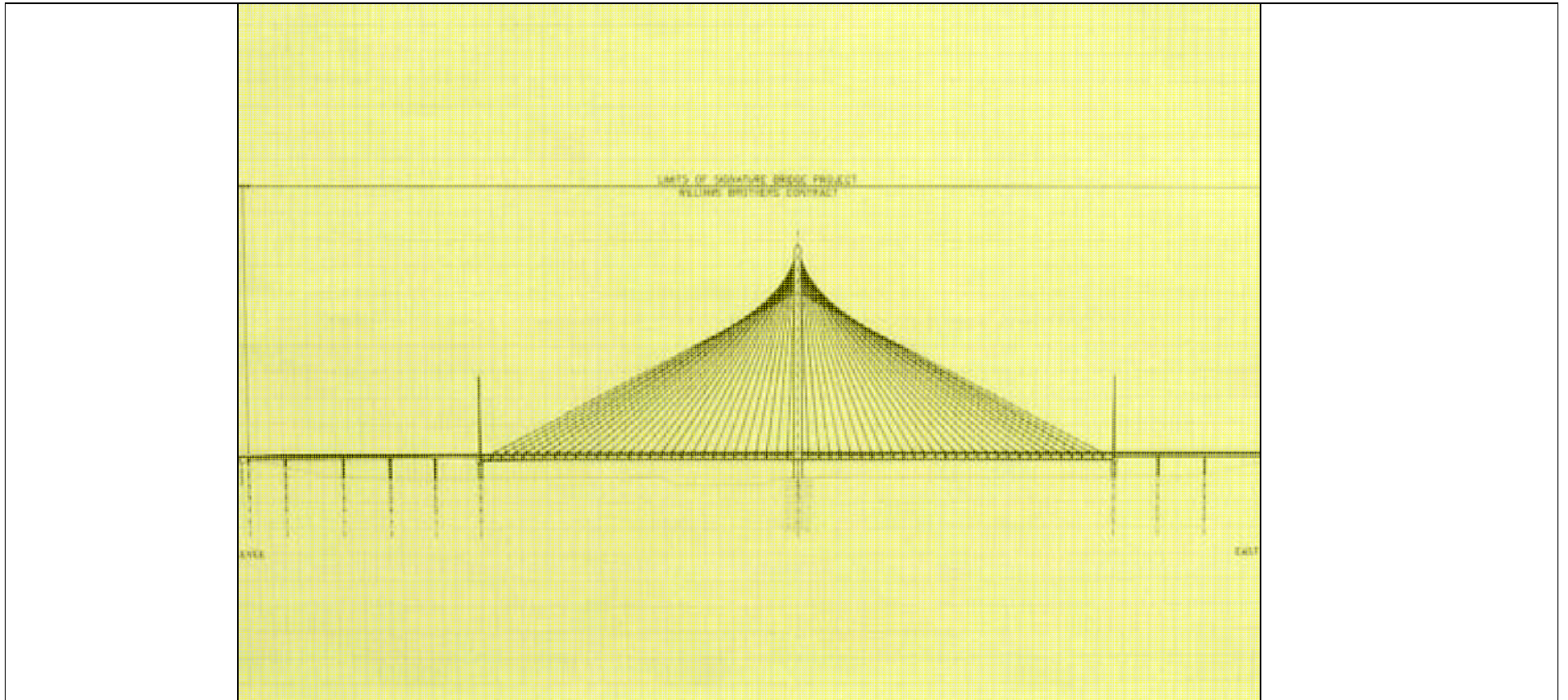
Margaret Hunt Hill Bridge



Trinity River Corridor Project Committee
September 16, 2008
Presenter: Bill Hale, P.E., District Engineer, TxDOT

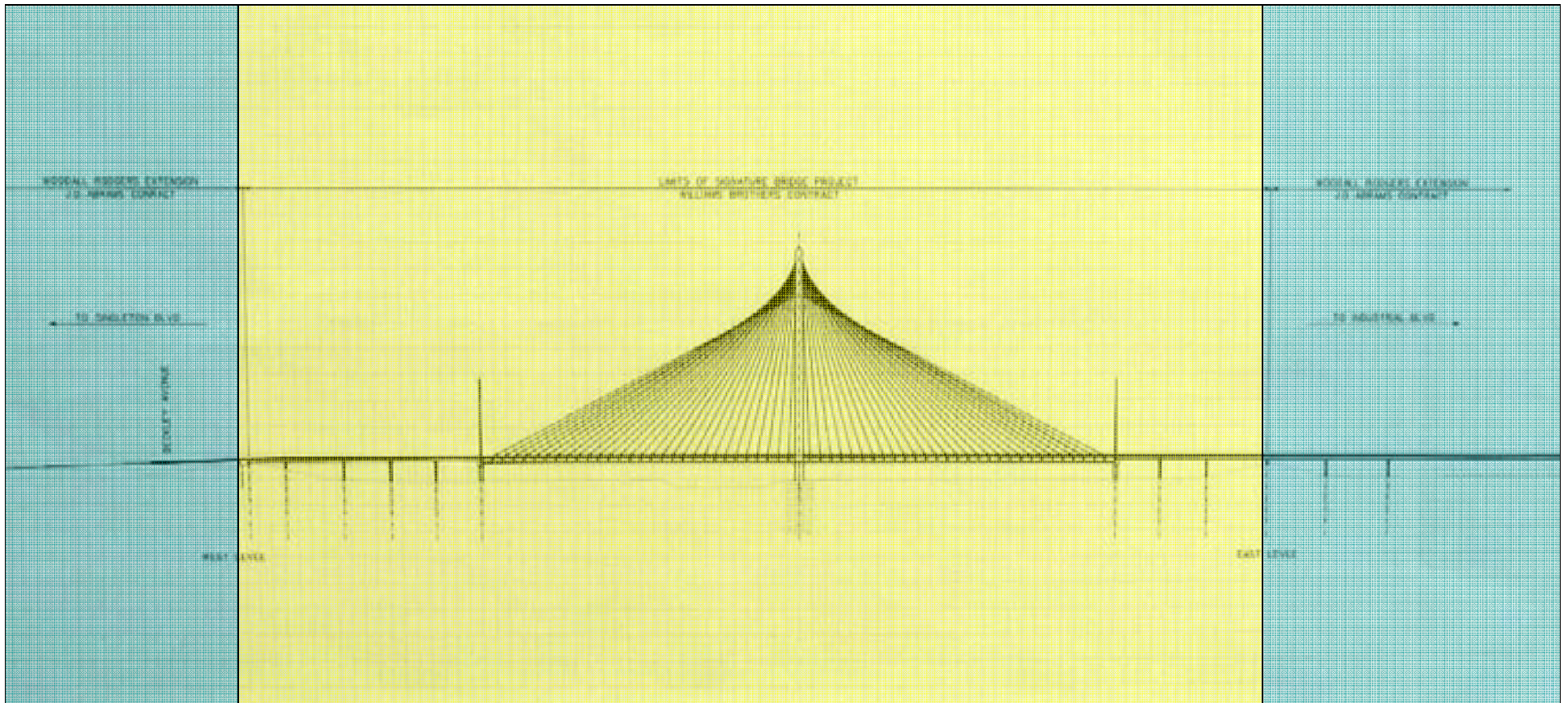


Margaret Hunt Hill Bridge



Bridge
(Williams Bros.)

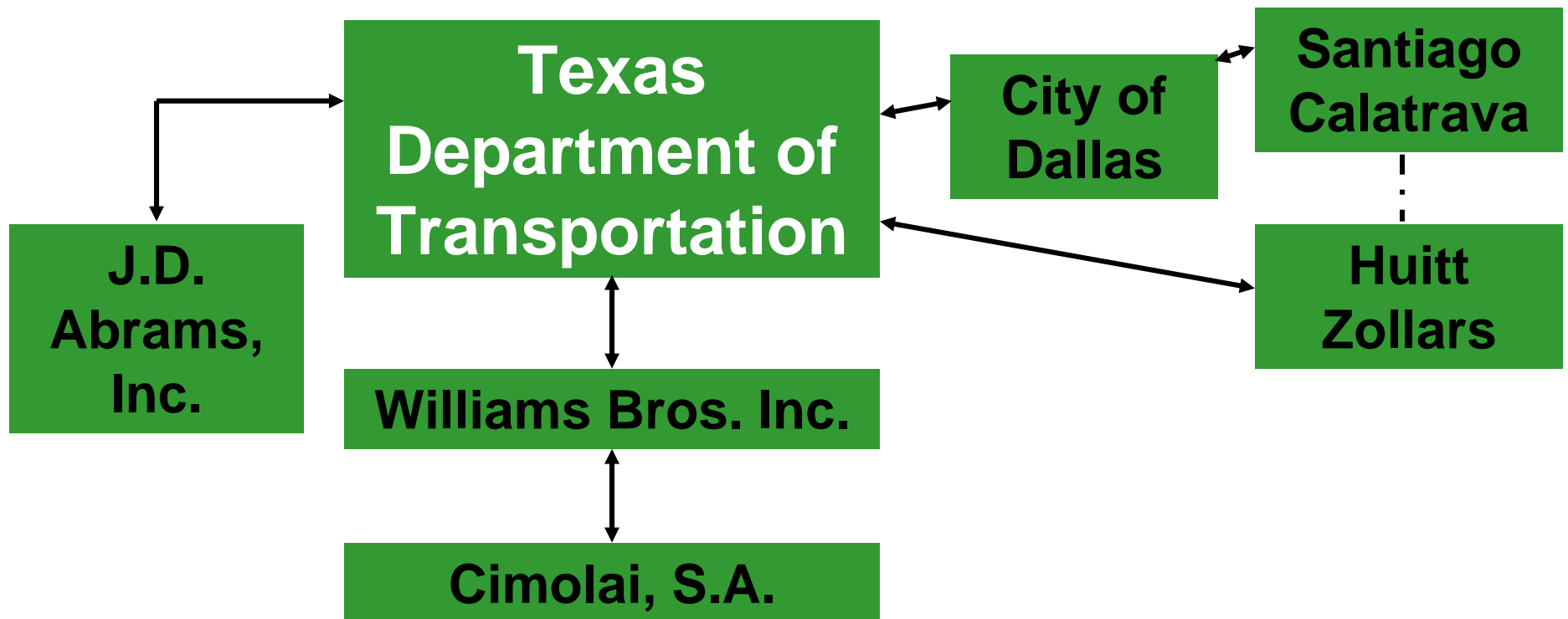
Margaret Hunt Hill Bridge



Approach Project
(J D Abrams, Inc.)

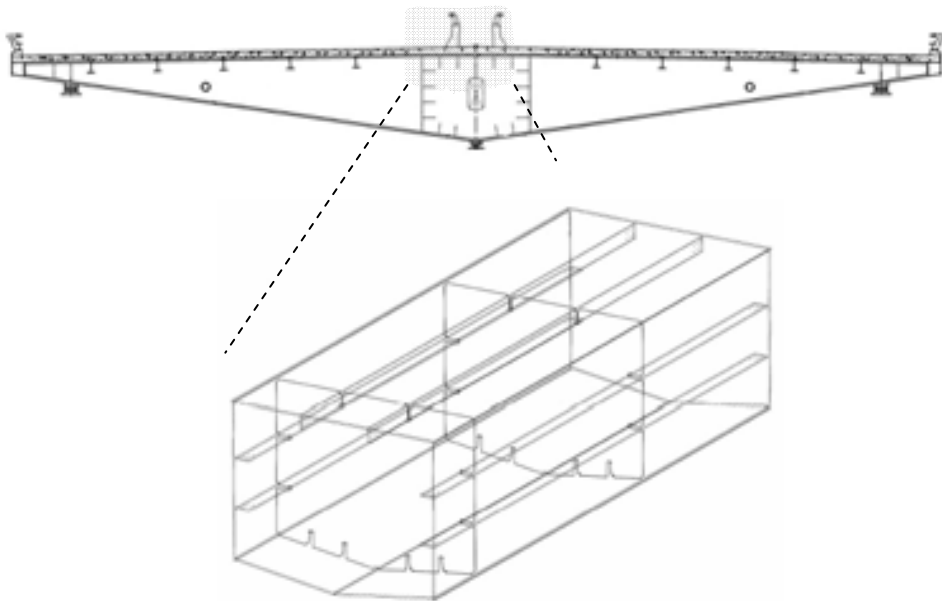
Approach Project
(J D Abrams, Inc.)

Margaret Hunt Hill Bridge Contractual Relationship Structure



Margaret Hunt Hill Bridge

- Why is the project behind schedule?

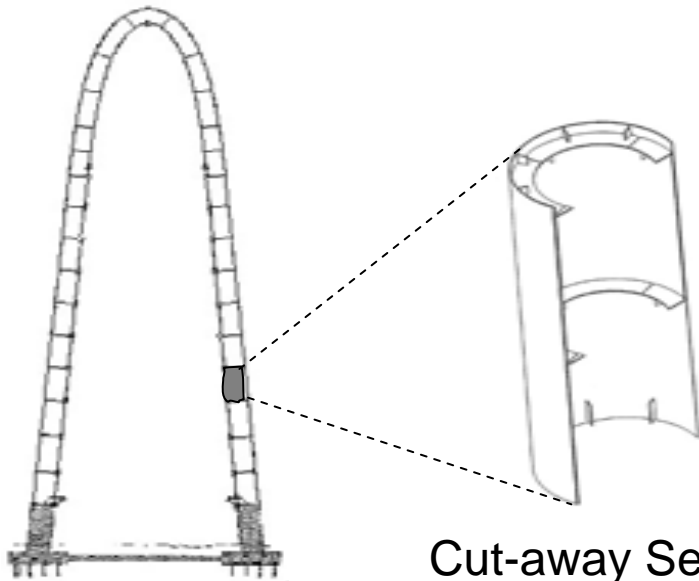


Schematic of
Central Box Girder



Margaret Hunt Hill Bridge

- What are the chances for recovering the time?



Cut-away Section
of the Arch Pylon



Margaret Hunt Hill Bridge Original Schedule for Signature Span

| Activity Description | 2007 | | | | 2008 | | | | 2009 | | | | 2010 | | | | 2011 | | | | | |
|----------------------|---------|---------|---------|---------|---------|---------|---------|---------|---------|---------|---------|---------|---------|---------|---------|---------|---------|---------|---------|---------|--|--|
| | 1st Qtr | 2nd Qtr | 3rd Qtr | 4th Qtr | 1st Qtr | 2nd Qtr | 3rd Qtr | 4th Qtr | 1st Qtr | 2nd Qtr | 3rd Qtr | 4th Qtr | 1st Qtr | 2nd Qtr | 3rd Qtr | 4th Qtr | 1st Qtr | 2nd Qtr | 3rd Qtr | 4th Qtr | | |
| Design Engineering | ■ | | | | | | | | | | | | | | | | | | | | | |
| Fabrication | | | ■ | | | | | | | | | | | | | | | | | | | |
| Transportation | | | | | ■ | | | | | | | | | | | | | | | | | |
| Erection | | | | | ■ | | | | | | | | | | | | | | | | | |

■ Original Schedule for Signature Span as of 2007 Construction Start (Williams Bros, Inc.)

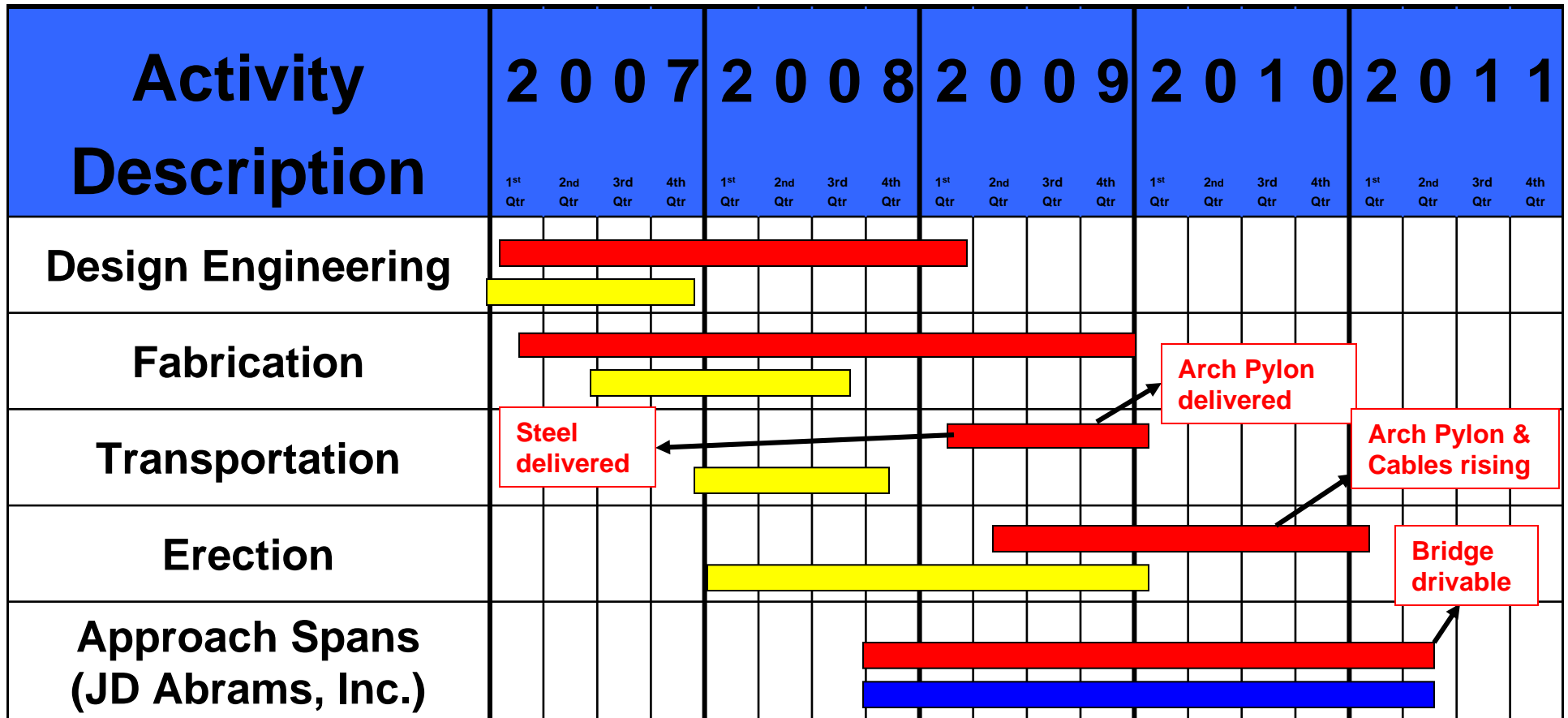
Margaret Hunt Hill Bridge Original Schedule for Signature & Approach Spans

| Activity Description | 2007 | | | | 2008 | | | | 2009 | | | | 2010 | | | | 2011 | | | |
|-------------------------------------|---------|---------|---------|---------|---------|---------|---------|---------|---------|---------|---------|---------|---------|---------|---------|---------|---------|---------|---------|---------|
| | 1st Qtr | 2nd Qtr | 3rd Qtr | 4th Qtr | 1st Qtr | 2nd Qtr | 3rd Qtr | 4th Qtr | 1st Qtr | 2nd Qtr | 3rd Qtr | 4th Qtr | 1st Qtr | 2nd Qtr | 3rd Qtr | 4th Qtr | 1st Qtr | 2nd Qtr | 3rd Qtr | 4th Qtr |
| Design Engineering | ■ | | | | | | | | | | | | | | | | | | | |
| Fabrication | | | ■ | | | | | | | | | | | | | | | | | |
| Transportation | | | | | ■ | | | | | | | | | | | | | | | |
| Erection | | | | | ■ | | | | | | | | | | | | | | | |
| Approach Spans (JD Abrams, Inc.) | | | | | | | | | ■ | | | | | | | | | | | |

■ Original Schedule for Approach Spans as of 2008 Construction Start (JD Abrams, Inc.)

■ Original Schedule for Signature Span as of 2007 Construction Start (Williams Bros, Inc.)

Margaret Hunt Hill Bridge Schedule Comparison Original vs. Current



- Original Schedule for Approach Spans as of 2008 Construction Start (JD Abrams, Inc.)
- Original Schedule for Signature Span as of 2007 Construction Start (Williams Bros, Inc.)
- Current Schedule for Signature Span (Williams Bros. Inc.)

Margaret Hunt Hill Bridge

