

Memorandum



DATE: September 9, 2011

TO: Members of the Public Safety Committee

SUBJECT: Love Field Police Unit

Attached is briefing material on the "Love Field Police Unit" to be presented to the Members of the Public Safety Committee on Monday, September 12, 2011.


A.C. Gonzalez
First Assistant City Manager

Attachment

CC: Honorable Mayor and Members of the Dallas City Council
Mary K. Suhm, City Manager
Rosa Rios, Acting City Secretary
Thomas P. Perkins, Jr., City Attorney
Craig D. Kinton, City Auditor
C. Victor Lander, Administrative Municipal Judge
Ryan S. Evans, Assistant City Manager
Jill A. Jordan, P.E., Assistant City Manager
Forest E. Turner, Assistant City Manager
Joey Zapata, Interim Assistant City Manager
Jeanne Chipperfield, Chief Financial Officer
Frank Libro, Public Information Office
Helena Stevens-Thompson, Assistant to the City Manager Mayor/City Council



Love Field Police Unit Public Safety Presentation

Public Safety Committee

September 12, 2011



Love Field Airport

- 2nd Largest Airport in the DFW Metroplex
- 1,300 Acres
- 3 Runways
- Undergoing a \$500 Million Modernization
- 7,960,809 Passengers in 2010
- 168,544 Aircraft Operations in 2010
 - Air Carrier - 52%
 - General Aviation -32%
 - Air Taxi – 15%
 - Military – 1%

Love Field Public Safety

- Security at Love Field is a partnership of several agencies all working to create a safe environment for passengers and aircraft
 - Dallas Police
 - Department of Aviation
 - Private security contract
 - Transportation Security Administration(TSA)
- Fire Protection is a partnership of 2 departments all working to create a safe environment for passengers and aircraft
 - Dallas Fire Rescue
 - Department of Aviation

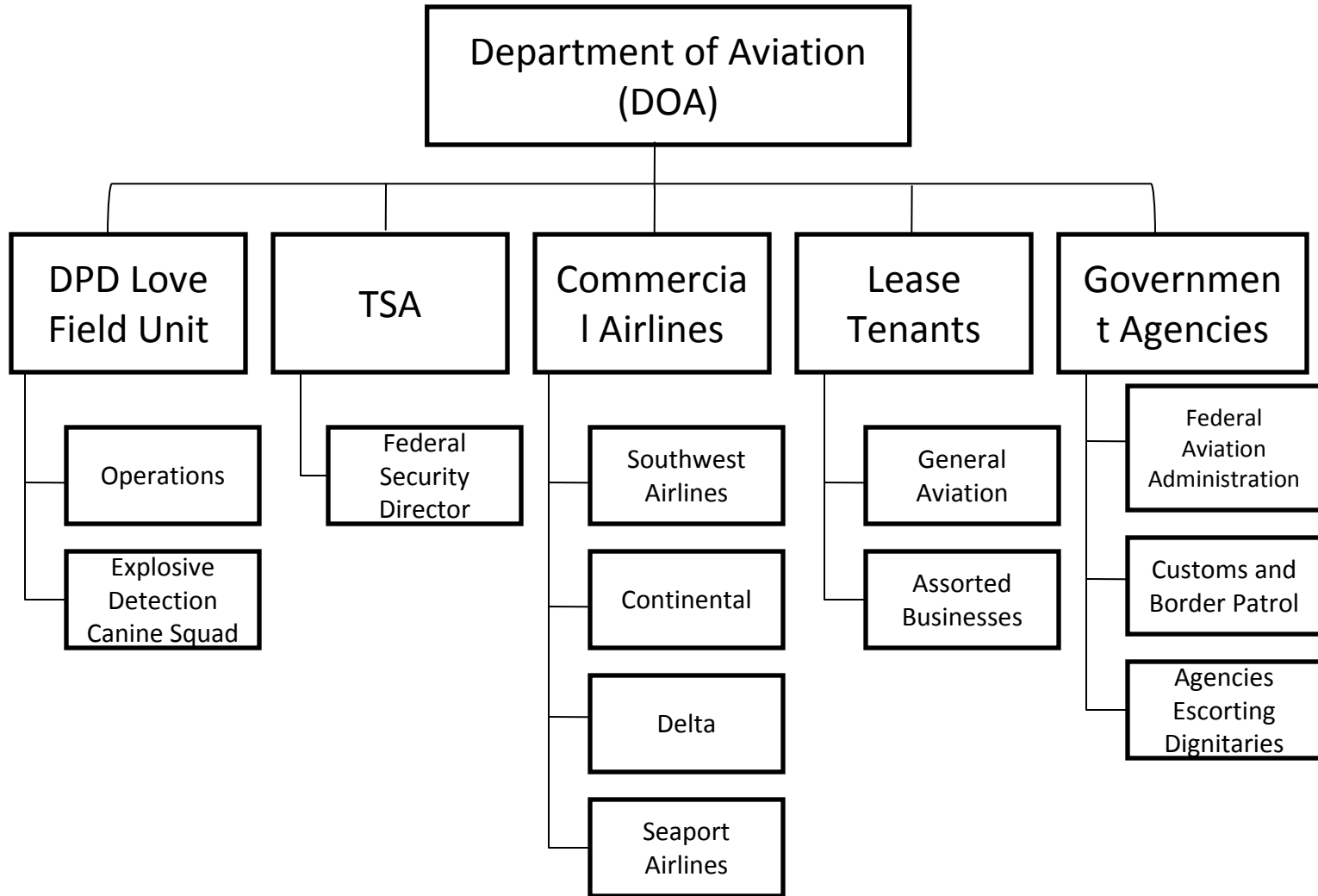
Security Components

- Love Field has an Airport Security Program approved by the TSA
 - Love Field currently is in full compliance with all TSA security requirements
- A working group of Department of Aviation, DPD, and TSA is also reviewing additional improvements that can enhance security

Security Components

- Creating a safe, secure environment includes several aspects including, but not limited to:
 - Airport perimeter Fence/Gates
 - Passenger Screening
 - Airport Identification
 - Access Control Systems
 - Roadway system and markings
- Adequate Police presence is essential for maintaining this sense of safety

Love Field Airport



Love Field Police Unit Mission

To provide and portray a safe environment for travelers, patrons, and employees at Dallas Love Field Airport through honesty, fairness, professionalism and respect for human life and personal dignity.

Love Field Police Unit

- Reimbursed by City of Dallas, Aviation Department
 - Salary Costs (Except for Two Senior Corporals in the Explosive Detection Canine Squad)
 - Overtime
 - Equipment
- Reimbursed Only for Airport Related Expenses

Love Field Police Unit Functions

- Law Enforcement Support
 - Lobby and Airport Perimeter Safety and Security
 - Monitor Secured Areas for Unauthorized Persons
 - Provide Secured Area Escorts (ambulance personnel, other LE, etc.)
 - Traffic Direction and Parking Enforcement
 - Unattended Bags
 - Respond to Calls for Police Service on Airport Property

Love Field Police Unit Functions

- Security for VIP Visits
 - 118 incidents of a dignitary flying in or out of Love Field January through July, 2011
- Customer Service
 - Airport Directions
 - Lost Vehicles
 - Injured or Sick Persons

Love Field Police Unit Functions

- Transportation Security Administration (TSA) Partnership
 - Respond to checkpoint disturbances
 - Arrest persons attempting to pass through checkpoints with weapons
 - Terminal and concourse security
 - Perimeter security
 - Intelligence sharing
- Explosive Detection Canine Duties Airport and City

Love Field Police Unit Crime Review

- Violent Crimes are Rare
- Property Crimes Comprise the Majority
 - BMV's - Burglary of Motor Vehicles (Taking Stereos, Other Loose Items)
 - Other Thefts
 - Failure to Return Rental Vehicles

2010-11 Crime Review (Jan-July)

Love Field Beat 523 (RA 3070)

<u>UCR Category</u>	<u>2010</u>	<u>2011</u>	<u>PCT. CHG.</u>
Murder	0	0	0%
Rape	0	0	0%
Agg. Assault	0	1	100%
Robbery			
Business	0	0	0%
Individual	0	1	100%
Total Violent	0	2	>100%
Burglary			
Business	1	1	0%
Residential	0	0	0%
Theft	17	13	-24%
Shop Lift	0	0	0%
Burglary of Vehicle/Auto Acc	1	5	>100%
Other Theft	16	8	-50%
Auto Theft	0	1	100%
Total Non-Viol	18	15	-17%
Total	18	17	-6%

Operational Activity

May - July 2011

	<u>MAY</u>	<u>JUN</u>	<u>JUL</u>	<u>UNIT TOTALS</u>
Access Alarm	82	77	64	223
Suspicious Packages	63	52	46	161
Checkpoint Detention	30	18	26	74
Security Incident	3	6	9	18
Public Service	262	256	281	799
Aircraft Alert	3	4	4	11
DFD/MICU	11	30	26	67
MIR/Offense Report	51	61	42	154
Dignitaries	30	22	12	64
Totals:	535	526	510	1571

Explosive Detection Canine Squad

- Staffing
 - 4 Senior Corporals (Canine Handlers)
- Required to Conduct 1 Hour of Cargo Searches Per Day
 - Required to Provide Presence and Search Airport Lobby Areas Daily
 - 80% of Time to Be Spent at the Airport
- Responds to Calls for Explosive Canine Detection City-Wide
 - 74 off-airport responses January through July, 2011
 - Secret Service and other Federal Agencies – 45
 - Local Agencies and DPD Intelligence – 26
 - Bomb Threats - 3

Explosive Detection Canine Squad

- Certification Requirements
 - 10 Week Explosive Detection Canine School for Handler with Minimum of 92.3% Find Rate
 - 90 Days Later National Explosive Detection Canine Team Program Evaluators Spend Two Weeks Evaluating Handler and Canine Teams
 - Proficiency and Certify Handler and Canine
 - Annual Re-Certification with Minimum of 92.3% Find Rate

Dallas Fire-Rescue

An All-Hazards Response to Love Field

Fire, Emergency Medical Service (EMS),
Urban Search and Rescue (USAR),
HazMat, Water Rescue



Love Field Station 21

On-Field Response – Aircraft Emergencies



Looking Forward

- Love Field Modernization-estimated completion date 2014
 - Estimated Passenger Increases
 - 11.8 Million in 2015
 - 16 Million in 2025
- Wright Amendment
 - Will be lifted in 2014
 - Will allow nonstop flights to all domestic locations

Questions?