

Memorandum



DATE: November 14, 2008

TO: Members of the Public Safety Committee

SUBJECT: **Crime Report**

Attached is briefing material on the "Crime Report" to be presented to the Members of the Public Safety Committee on Monday, November 17, 2008.

A handwritten signature in black ink that reads "Ryan S. Evans".

Ryan S. Evans
First Assistant City Manager

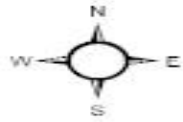
alb

Attachment

PUBLIC SAFETY COMMITTEE CRIME BRIEFING

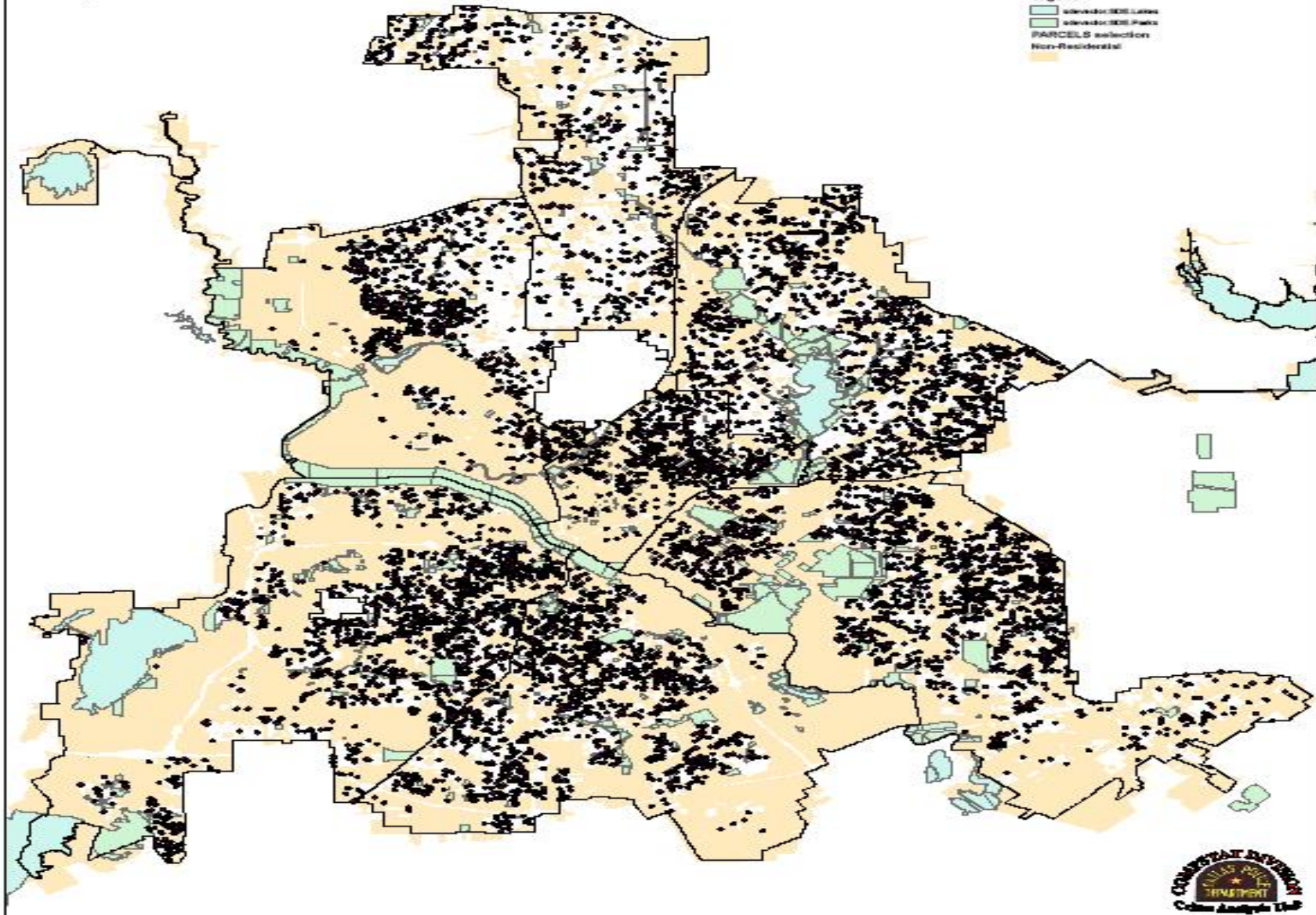
INDEX CRIME YEAR TO DATE 10/31/08

CRIME TYPE	Actual YTD	Actual LYTD	% CHG YTD
Violent Crimes			
Murder	134	177	-24.3%
Rape	443	455	-2.6%
Robbery	5400	5940	-9.1%
Business	1034	1169	-11.5%
Individual	4366	4771	-8.5%
Aggravated Assault	3674	4597	-20.1%
Total Violent Crime	9651	11169	-13.6%
Non-Violent Crimes			
Burglary	17764	18429	-3.6%
Business	5548	6104	-9.1%
Residence	12216	12325	-0.9%
Theft	35776	39466	-9.3%
Auto Theft	10504	11514	-8.8%
Total Non-Violent	64044	69409	-7.7%
Total Index Crimes	73695	80578	-8.5%



Residential Burglary Jan 01- Nov 11, 2008

Legend
 ■ water bodies
 ■ water bodies
 ■ PARCELS selection
 ■ Non-Residential



OFFENSE	CENTRAL	NORTH CENTRAL	NORTHEAST	NORTHWEST	SOUTH CENTRAL	SOUTHEAST	SOUTHWEST	Grand Total
BURGLARY-RESIDENCE	636	1334	3015	1222	1914	2246	2091	12648
Grand Total	636	1334	3015	1222	1914	2246	2091	12648