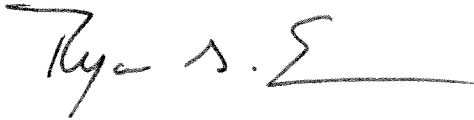


# Memorandum



Date: October 30, 2009  
To: Mayor Pro Tem Dwaine Caraway, Chair  
and Members of the Public Safety Committee  
Subject: Maintenance Division Overview

The Public Safety Committee will be briefed on the Maintenance Division Overview on Monday, November 2, 2009.



Ryan S. Evans  
First Assistant City Manager

## Attachment

- c: Honorable Mayor and Members of the Dallas City Council
  - Mary K. Suhm, City Manager
  - Deborah Watkins, City Secretary
  - Tom Perkins, City Attorney
  - Craig Kinton, City Auditor
  - Victor Lander, Administrative Municipal Judge
  - Jill A. Jordan, P.E., Assistant City Manager
  - A.C. Gonzalez, Assistant City Manager
  - Forest E. Turner, Assistant City Manager
  - Dave K. Cook, Chief Financial Officer
  - Helena Stevens-Thompson, Assistant to the City Manager Mayor/City Council Office



# DALLAS FIRE-RESCUE DEPARTMENT

**Maintenance Division**  
Assistant Chief Louie Bright, III

November 2, 2009



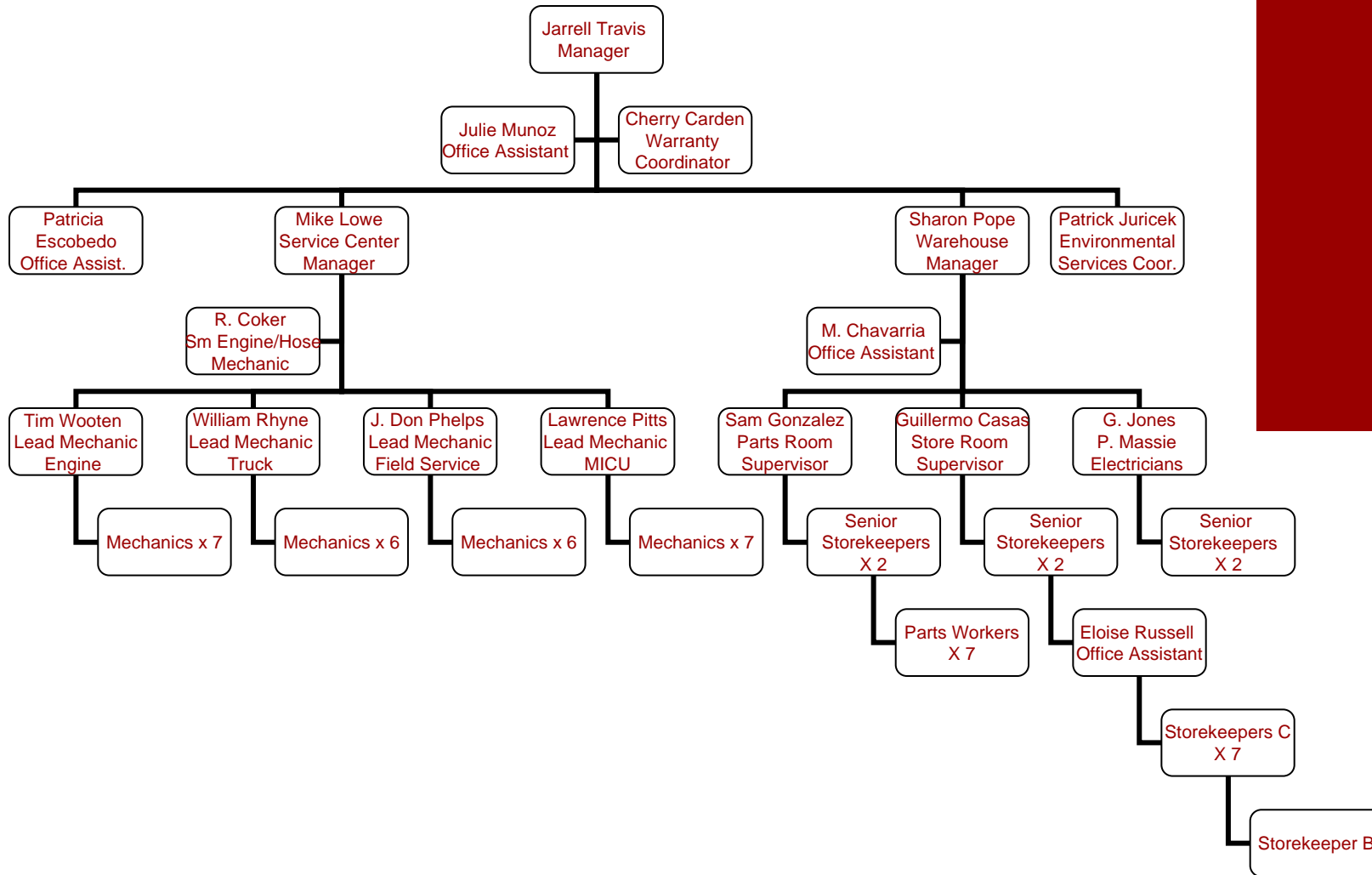


# Maintenance Division

## Purpose:

- To provide information related to the daily operations of the Maintenance Division and its various job functions

# Maintenance Division



# MAINTENANCE DIVISION Fleet Maintenance



- Heavy Apparatus



- EMS Equipment



# MAINTENANCE DIVISION Fleet Maintenance



- Preventive Maintenance



- Equipment Purchasing

  - ✓ Accelerated replacement schedule



# FACILITY COORDINATION



## ■ Bond Program

√2003 Bond Program  
4 - Replaced Stations  
1 - New Station

√2006 Bond Program  
5 - Replaced Stations  
1 - New Station  
1 - Expansion

## ■ New/Replacement Fire Stations

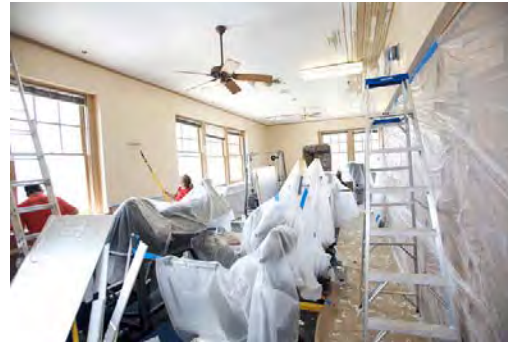
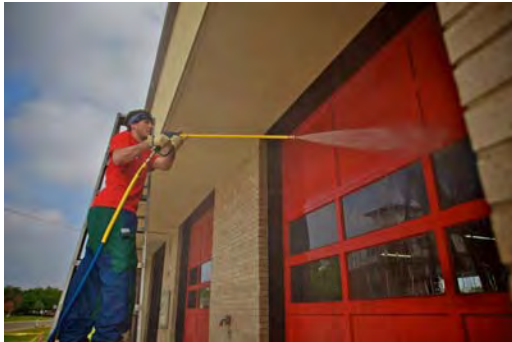




# MAINTENANCE DIVISION Station Maintenance



## ■ Facility Repairs





# MAINTENANCE DIVISION Clothing & Supply



- Station Supplies



- EMS Supplies



# MAINTENANCE DIVISION Clothing & Supply



- Protective Clothing



- Uniforms



# ENVIRONMENTAL PROJECT



- EPA Mandate



- Consent Decree



# ENVIRONMENTAL PROJECT

- City-wide Initiative
- Departmental Procedures





# QUESTIONS