

Memorandum



CITY OF DALLAS

DATE October 30, 2009

TO Trinity River Committee Members:
David Neumann (Chair)
Steve Salazar (Vice-Chair)
Mayor Pro Tem Dwaine Caraway
Deputy Mayor Pro Tem Pauline Medrano
Carolyn R. Davis

Vonciel Jones Hill
Delia Jasso
Linda Koop

SUBJECT **Continental Bridge Design**

At the November 3, 2009 Trinity River Corridor Project Committee Meeting, the attached briefing will be presented on the initial concepts, budget and schedule for the modification of the Continental Ave. Bridge. The presentation will be made by representatives from the City's Lake Design team consultants, Jim Parrish (CH2M-Hill) and Don Raines (Wallace, Roberts and Todd).

Please let me know if you have any additional questions.

Jill A. Jordan, P.E.
Assistant City Manager



THE TRINITY
DALLAS

c: Honorable Mayor and Members of the City Council
Mary K. Suhm, City Manager
Ryan S. Evans, First Assistant City Manager
A. C. Gonzalez, Assistant City Manager
Forest E. Turner, Assistant City Manager
David K. Cook, Chief Financial Officer
Deborah A. Watkins, City Secretary
Thomas P. Perkins, Jr., City Attorney
Craig D. Kinton, City Auditor
Judge C. Victor Lander
Helena Stevens-Thompson, Asst. to the City Manager
Frank Libro, Director, Public Information Office



CONTINENTAL BRIDGE DESIGN November 2009



Project Goals:

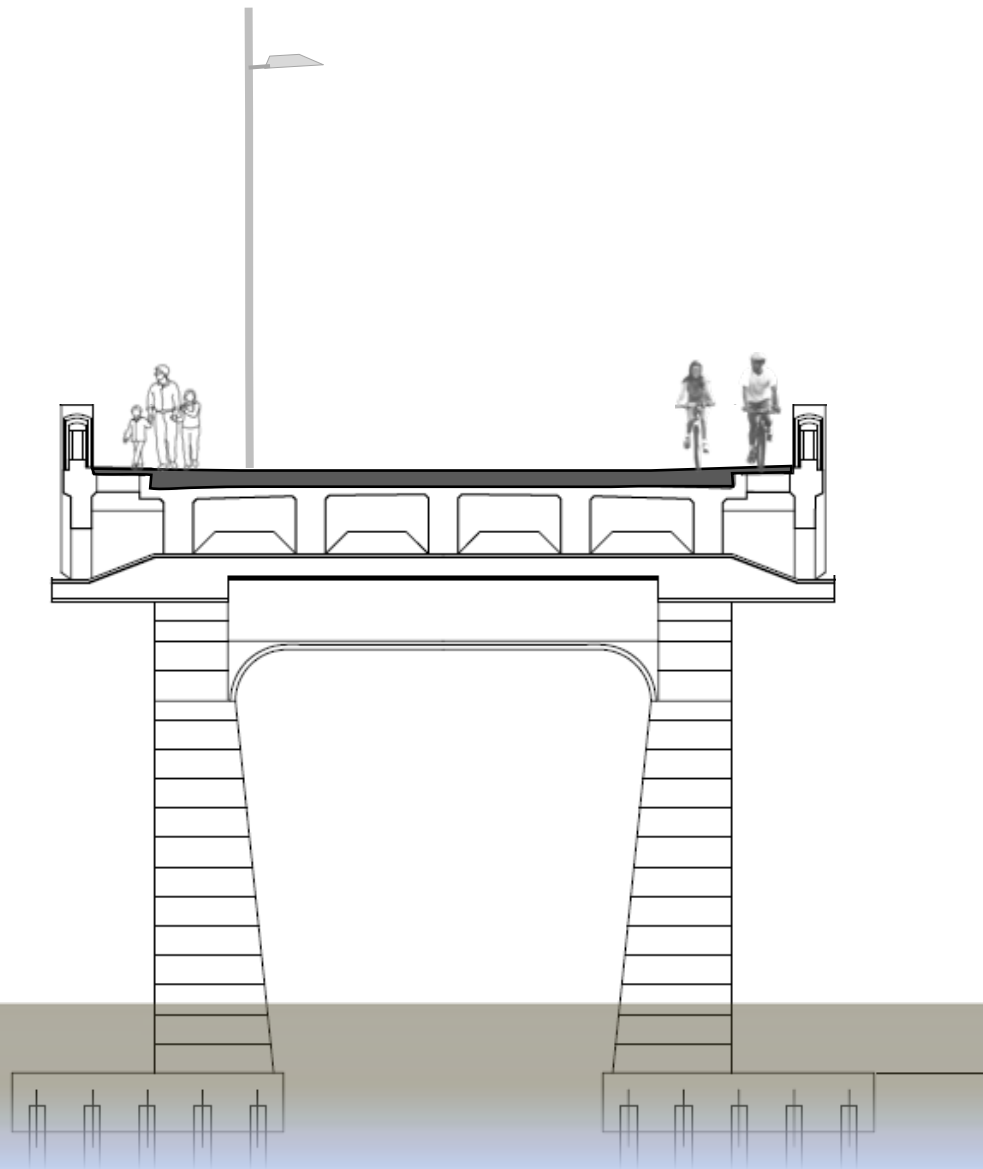
- People Place
- Venue for Celebrations
- Destination and a Connector

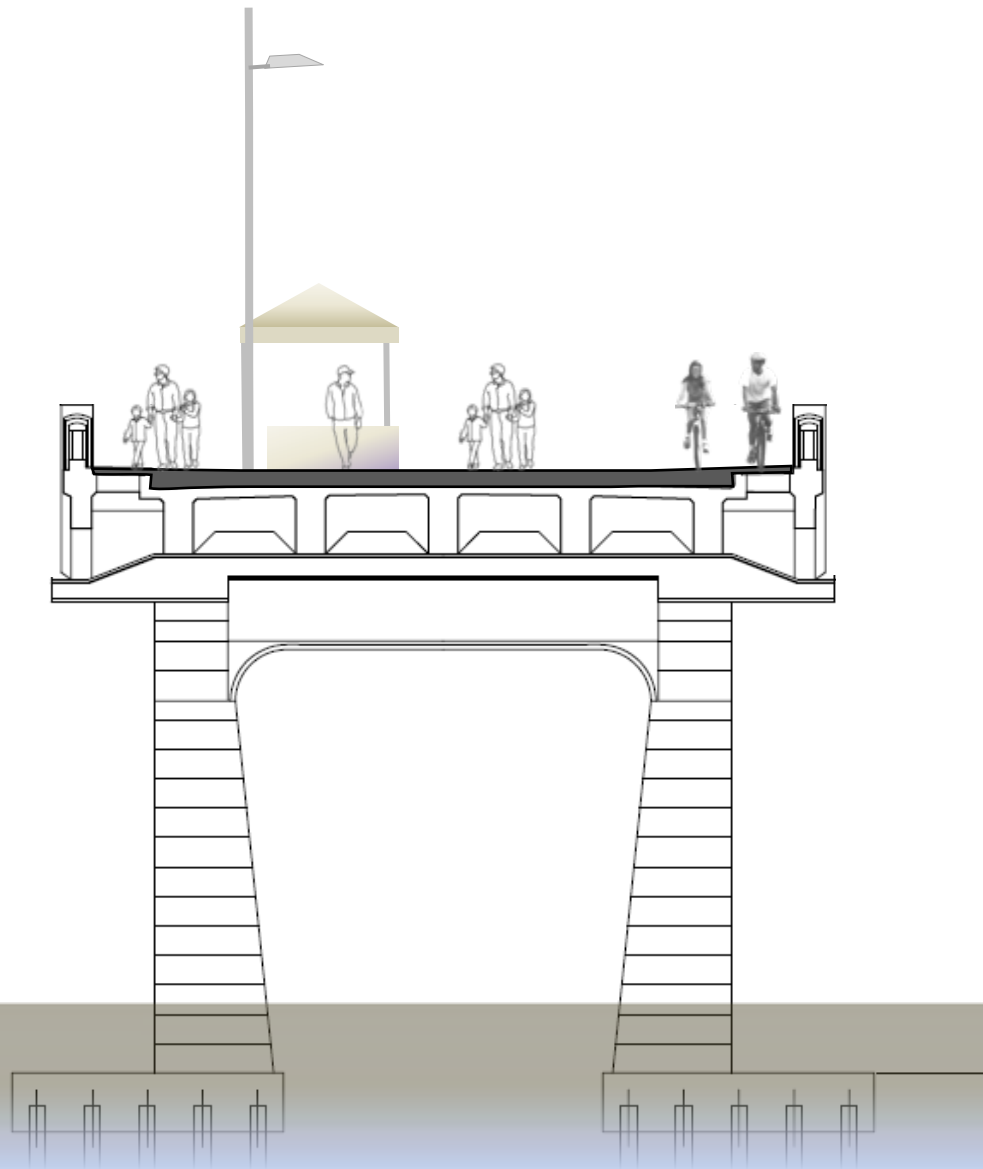


Program Objectives:

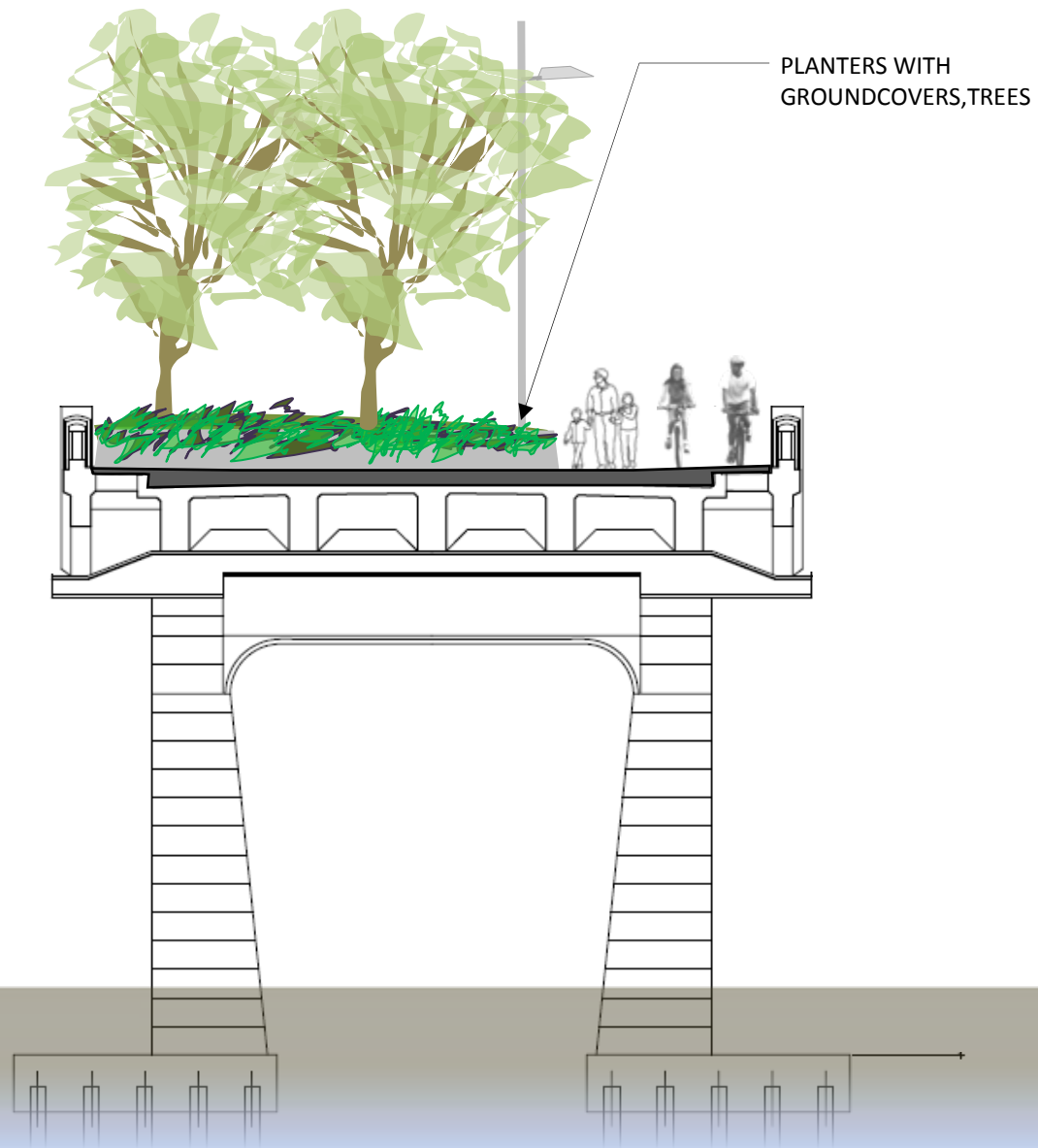
- Balance between open plaza/flex areas and amenity zone
- Multipurpose path meanders across the bridge, connected to Continental – Victory connector trail
- Continuous viewing areas on north and south sides of the bridge

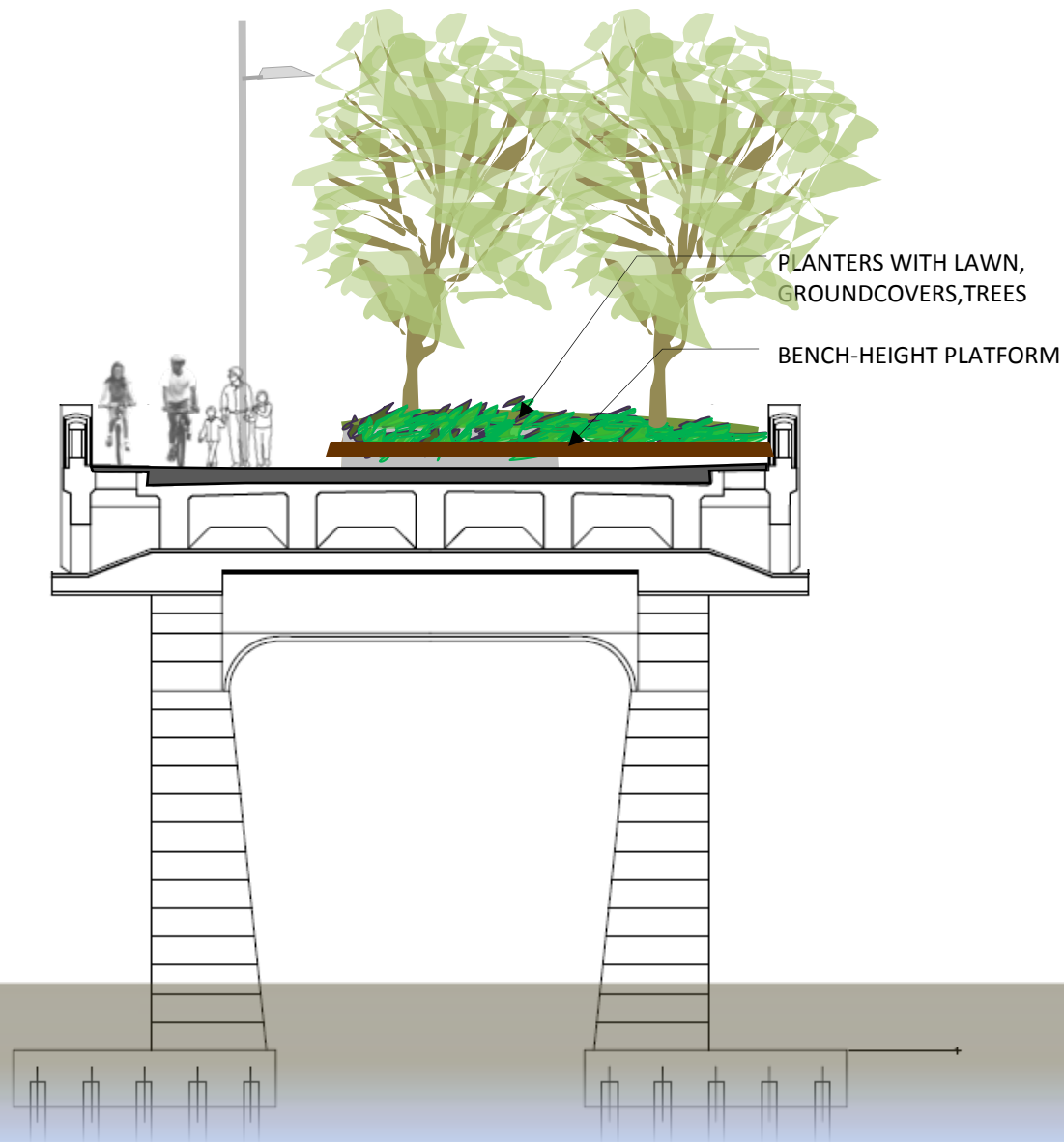


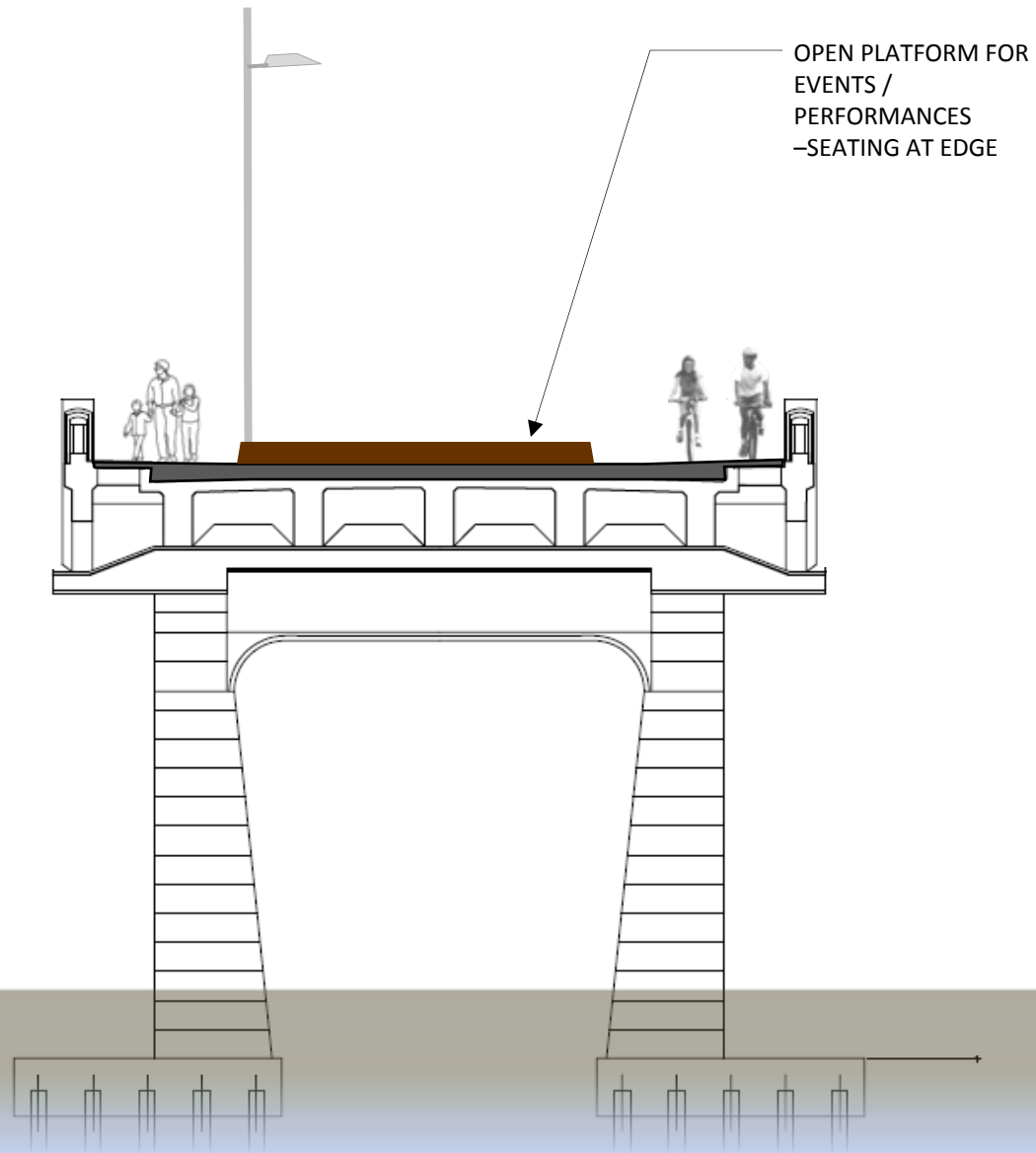








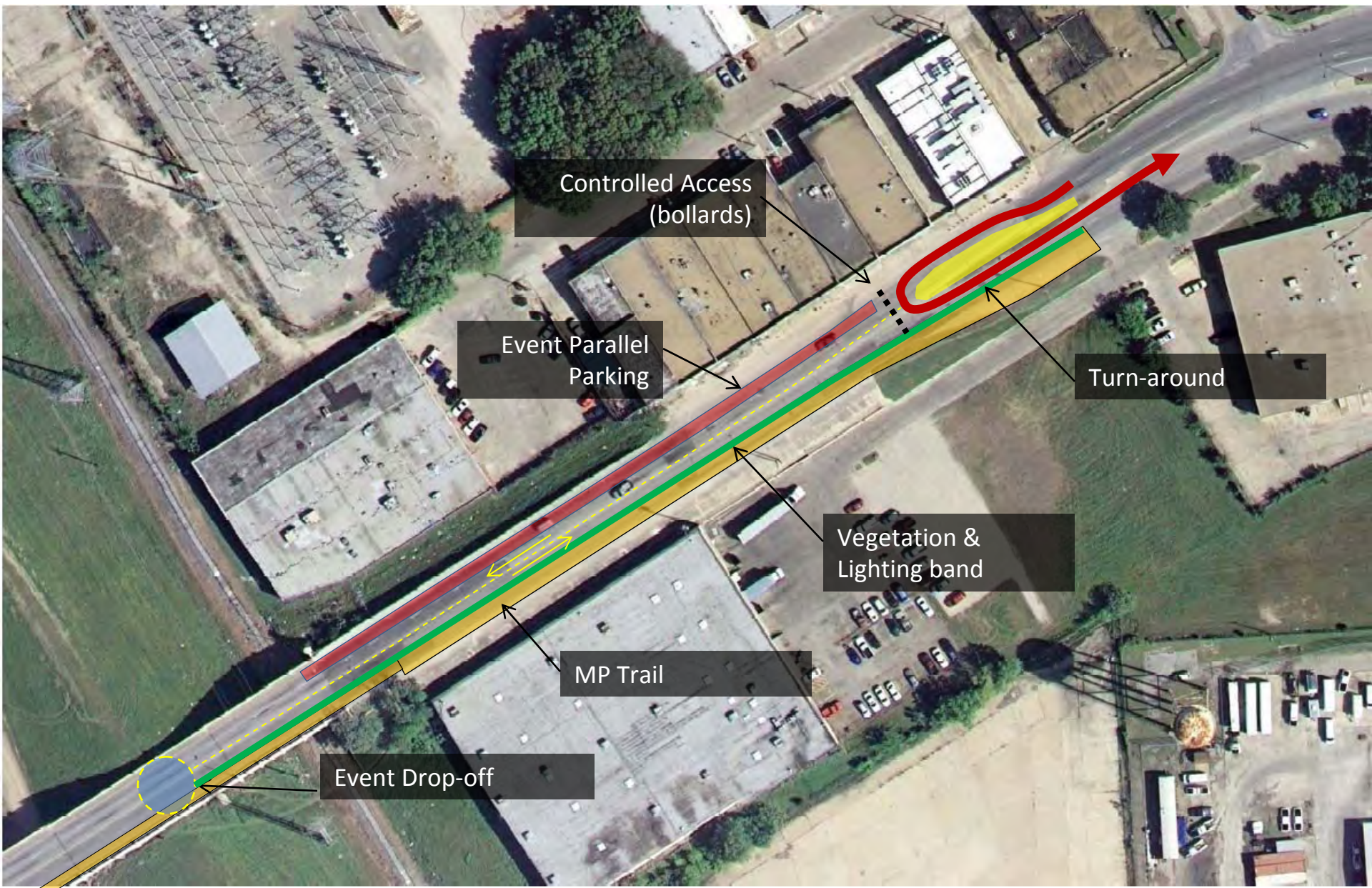






East Entrance

- Phased Approach / Cost Effective solution.
- Existing Continental Ave. between Core Street and Bridge will serve as access until Loop Plaza and Parkway is constructed.
- Two Inside Lanes to serve as vehicle entry and exit lanes with valet turn around on bridge.
- Two Outside lanes to serve as parallel parking (west bound lane) and MP Trail extension (east bound lane).







ESTIMATED COSTS

BRIDGE

	QTY	UNIT	UNIT COST	COST	REMARKS
DEMOLITION	LS			115,000	
MISC REPAIRS	LS			100,000	
UTILITIES	LS			1,000,000	
EDGE PATHS	92,000	SF	6.50	600,000	Concrete
RAILING	2,000	LF	135	270,000	3" OD pipe rail
OPEN PLAZA	35,000	SF	13	455,000	Aggregate paving
AMENITY ZONE	20,000	SF	115	2,300,000	planters , seating, lawn panels, etc.
CONCESSIONS AREA PAVING	4,800	SF	6.50	31,200	std. concrete
LIGHTING	LS			250,000	25 poles + accent lights
SIGNAGE	LS			100,000	
			subtotal	\$5,221,200	

APPROACH

	QTY	UNIT	UNIT COST	COST	REMARKS
DEMOLITION	LS			25,000	
MISC REPAIRS	LS			10,000	
UTILITIES	LS			0	
CURB	670	LF	20	13,400	Concrete
RAILING	500	LF	60	30,000	Galvanized pipes
LANDSCAPE STRIP	5,600	SF	16	89,600	Soil, 22 trees, groundcover, irrig.
LIGHTING	10	EA	5,000	50,000	
BOLLARDS	10	EA	1,200	12,000	6" O.D. galvanized pipes, 4' O.C.
SIGNAGE	LS			25,000	
			subtotal	\$255,000	

BRIDGE + APPROACH \$5,476,200

CONTINGENGY (25%)	1,369,050
CONTRACTOR MARKUP (20.5%)	1,403,276
subtotal	\$8,248,526

ESCALATION (8.25%)	680,503
subtotal	\$8,929,030

DESIGN & ENGINEERING (12%)	1,070,981
PROJECT TOTAL	\$10,000,000

Project Schedule



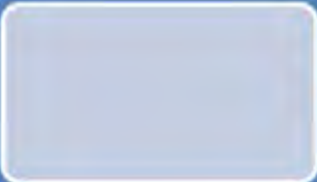
Schematic Design (2 Months)

- Review Period (2 Weeks)




Design Development (3 Months)

- Review Period (2 Weeks)



Construction Documentation (4 Months)

- Review Period (2 Week)



Construction Phase (12-18 Months)

- Bid Period (40-45 Days, Included)

Next Steps



Council Approval of Design Contract

- December 2009



Begin Construction When Margaret Hunt Hill Bridge Opens

- Spring 2011

