

Memorandum



CITY OF DALLAS

DATE October 23, 2009

TO Members of the Transportation and Environment Committee:
Linda Koop (Chair), Sheffie Kadane (Vice Chair), Jerry R. Allen, Tennell Atkins,
Carolyn R. Davis, Angela Hunt, Delia Jasso, Pauline Medrano, Ron Natinsky,
Vonciel Jones Hill

SUBJECT Urban Forestry Inventory using Concurrent Airborne LiDAR and Hyperspectral Remote Sensing Briefing

Attached is the "Urban Forestry Inventory using Concurrent Airborne LiDAR and Hyperspectral Remote Sensing" briefing that will be presented to you on October 26, 2009. The briefing will be presented by Dr. Fang Qiu, Associate Professor of GIS and Remote Sensing, Geospatial Information Sciences, University of Texas at Dallas.

Please contact me if you need additional information.

A handwritten signature in black ink, appearing to read "Jill Jordan".

Jill A. Jordan, P.E.
Assistant City Manager

c: The Honorable Mayor and Members of the City Council
Mary K. Suhm, City Manager
Thomas P. Perkins Jr., City Attorney
Deborah Watkins, City Secretary
Craig Kinton, City Auditor
Judge C. Victor Lander, Administrative Judge
Ryan S. Evans, First Assistant City Manager
A.C. Gonzalez, Assistant City Manager
Forest Turner, Assistant City Manager
David K. Cook, Chief Financial Officer
Jeanne Chipperfield, Director, Official of Financial Services
Edward Scott, City Controller
Helena Stevens-Thompson, Assistant to the City Manager
Rick Galceran, P.E., Director, Public Works and Transportation
Theresa O'Donnell, Director, Sustainable Development and Construction Department

Urban Forest Inventory Using LiDAR & Hyperspectral Images

- Larger existing trees provide 60-70 times the benefit of newly planted trees
- Highest priority in managing any urban forest is a complete tree inventory
- Traditional method of inventory involves volunteers surveying only public trees
- These methods were very labor intensive, time consuming and often inaccurate
- Since public trees comprise only 15-20% of the entire urban forest, the traditional method only provides a small part of the picture

Project History

- Since a traditional survey was not ideal, extensive researched was completed which included hyperspectral images (a new type of image)
- Dr. Fang Qiu was asked by the chair if the new images could be used for a complete tree inventory.
- “It may be possible...but it has never been done”
- Chair works diligently to convince others of the value by personally funding the field work portion of the project (\$13K) and contributing almost a year of time
- Chair raises over \$100K to complete the project
- Chair authorized the project to move forward lacking \$30K of the required budget

Dallas on the “Cutting Edge”

- First complete tree inventory **ever** based on laser scanning and hyperspectral images using highly advanced computer algorithms
- New technology developed by Dr. Qiu and the chair which allows all tree inventory data to be easily accessed and utilized in making critical urban forest management decisions
- This is a **first** in the history of urban forestry in that someone can now effectively manage ALL trees (public & private) by simply sitting at their computer
- Hyperspectral images can also be used to manage water quality & quantity, street markings or light fixtures and many others relating to existing land cover management (grey & green infrastructure)

Cost and Next Steps

- The projected cost to complete all of the city is 1.25 million for collection and 1.25 million for processing
- When other city departments understand the potential use of the images in infrastructure management, the cost can be shared and become very economical
- As the use of hyperspectral images increases in the future, the cost will decrease
- Brief other departments on the potential uses
- Brief NCTCOG, EPA, Texas Forest Service and others to gain backing & financial support in completing a city & regional tree inventory & infrastructure mapping project

Urban Forestry Inventory using Concurrent Airborne LiDAR and Hyperspectral Remote Sensing

Fang Qiu

University of Texas at Dallas

Sponsored by

Dallas Urban Forest Advisory Committee

Outline

- ◆ **Study area**
- ◆ **Remote Sensing Data Collection**
 - ◆ LiDAR, Hyperspectral
- ◆ **Field Data Collection and Analysis**
 - ◆ In situ spectroradiometer data collection and analysis
 - ◆ Field tree specie, GPS location collection
- ◆ **LiDAR Data Filtering**
 - ◆ Segmentation and DTM generation
 - ◆ Ground/non-ground separation
- ◆ **LiDAR Tree Mass Point Extraction**
 - ◆ Hyperspectral NDVI

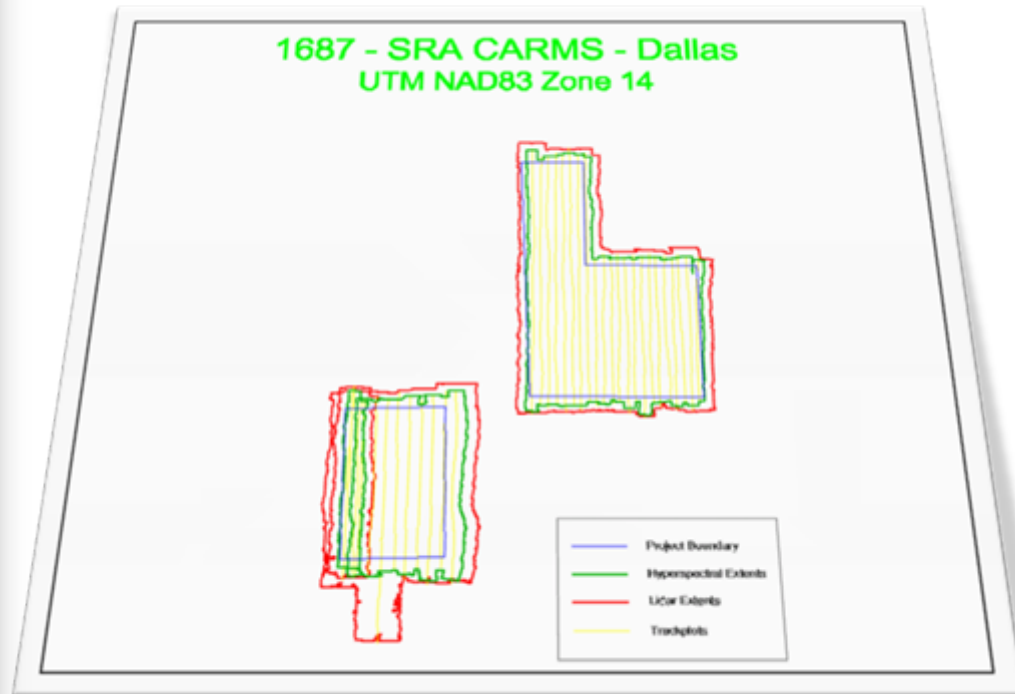
Outline

- ◆ **Urban Tree Top (UTT) Identification**
 - ◆ Tree Top Climbing
 - ◆ Tree height
- ◆ **Urban Tree Canopy (UTC) Delineation**
 - ◆ Donut Expanding and Sliding – Canopy Diameter
 - ◆ Base height, crown depth
- ◆ **Urban Tree Species (UTS) Identification**
 - ◆ Neuro-fuzzy classification
- ◆ **Digital 3D Tree Canopy Model Construction**
 - ◆ Individual Tree Modeling

Study Area

◆ City of Dallas

- ◆ Two pilot study sites, with a total area of 20 square miles



Remote Sensing Data Collection

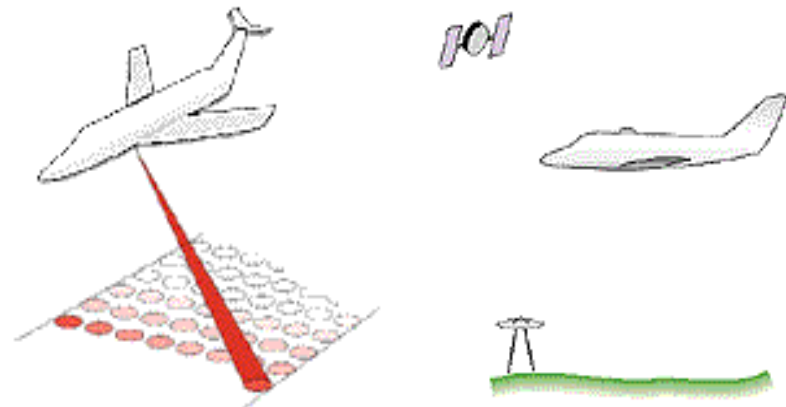
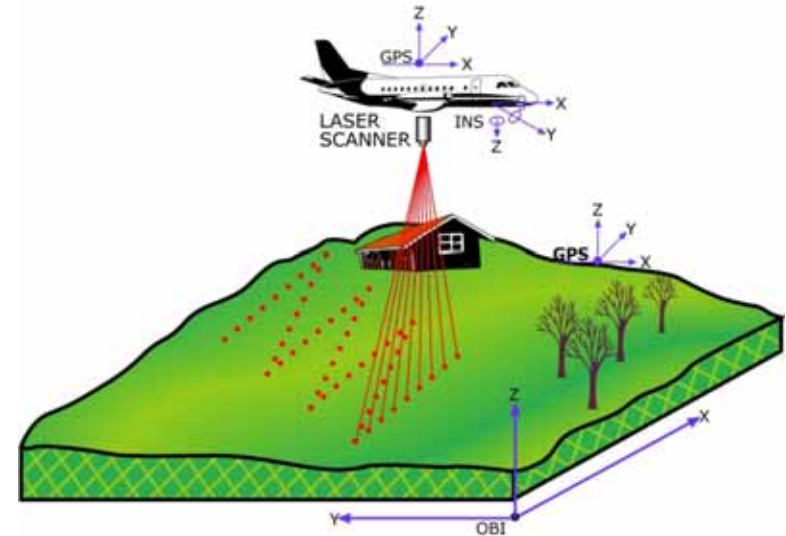
- ◆ Terra Remote Sensing, Inc (TRSI)
 - ◆ Sydney, British Columbia, Canada
- ◆ Mission partner at University of Victoria
- ◆ Date: September, 23-24, 2008
- ◆ Aircraft Type: Piper Navajo
 - ◆ Altitude: 960 m and 1260 m
 - ◆ Flying air speed: 235km/hr
- ◆ Total Data Volume
 - ◆ Hyper-Spectral Imaging Data: 181 GB
 - ◆ Radiance (60.6 GB) + Reflectance (121 GB)
 - ◆ LiDAR Data: 3.4 GB
 - ◆ 64 GB after uncompressed



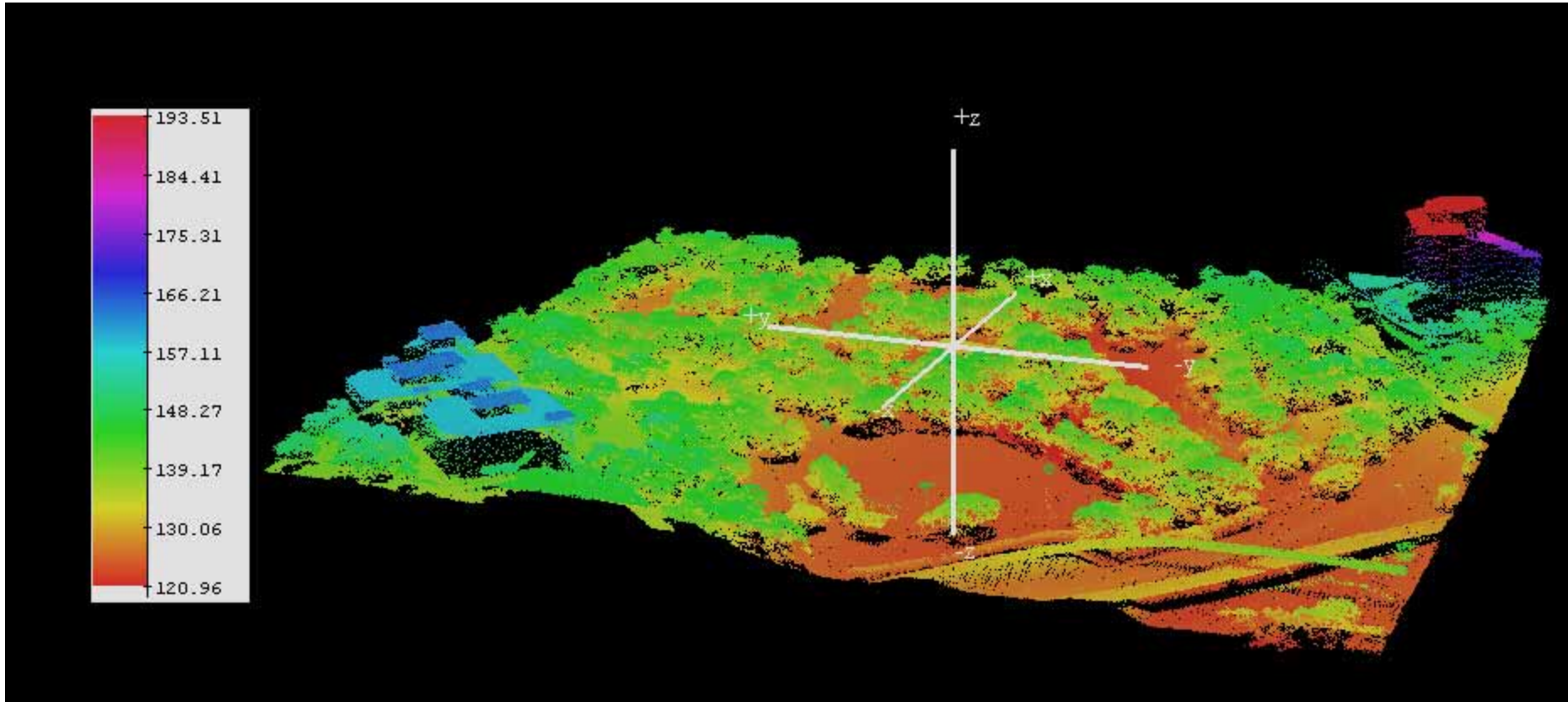
LiDAR Data

- ◆ Terrain Scanning Laser System
- ◆ LiDAR Point Cloud Density
 - ◆ (Average Spacing: $1/D^{1/2}$)
 - ◆ 9/23/2008: 2 pts/m² (0.7 m)
 - ◆ Due to overlap, 3.5 pts/m² (0.53 m)
 - ◆ 9/24/2008: 1.25 pts/m² (0.89 m)
 - ◆ Due to overlap, 2 pts/m² (0.7 m)
- ◆ %Overlap: 80
- ◆ Number of Returns: 2
 - ◆ First and Last Returns
- ◆ Bandwidth: 1064 nm
- ◆ Beam divergence: 0.45 mrad

LASER SCANNING

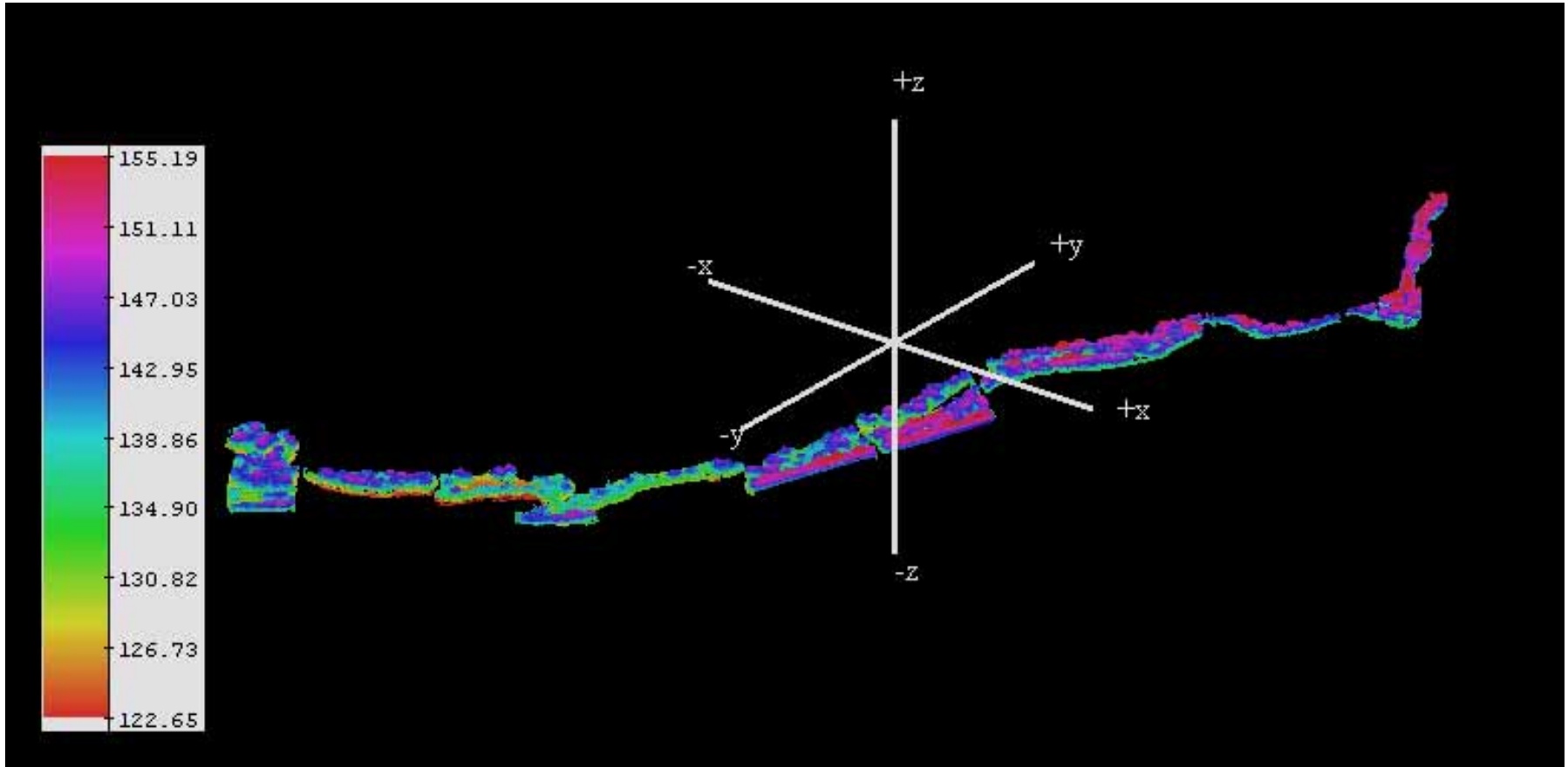


LiDAR Data



3D visualization of elevation of LiDAR points over the Reverchon park study area

LiDAR Data: Turtle Creek Corridor

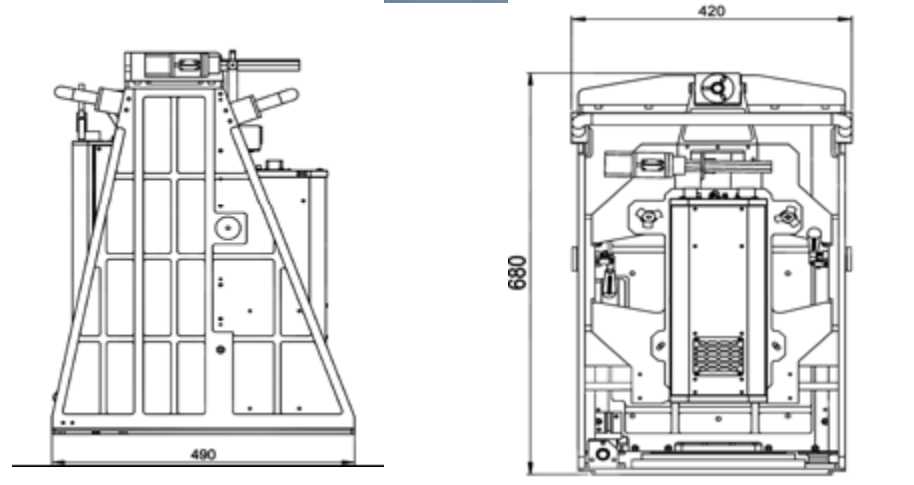
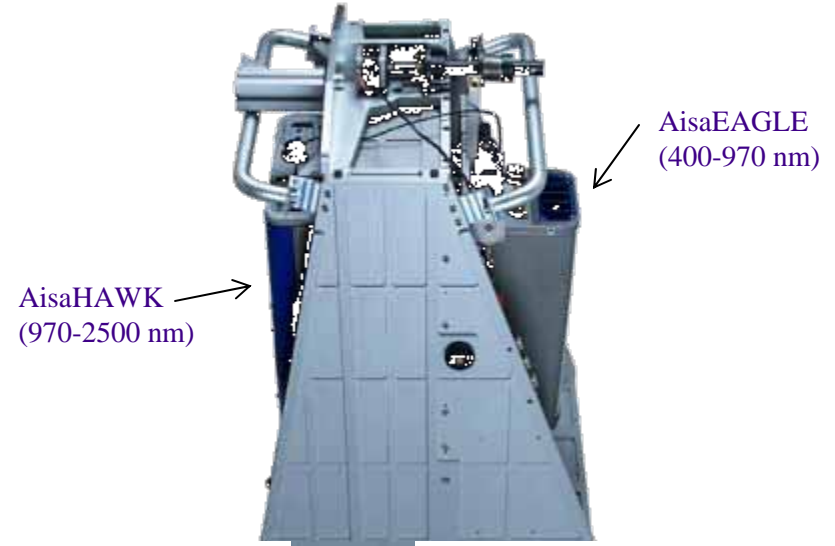


3D visualization of elevation of LiDAR points over the Turtle Creek Corridor

Hyper-spectral Imaging (HSI) Data

◆ AISA DUAL HSI Sensor Spectral Imaging Ltd. Finland

- ◆ Simultaneous acquisition of VNIR and SWIR data
- ◆ AisaEAGLE (VNIR)
- ◆ AisaHawk (SWIR)
- ◆ 492 Band (400-2500 nm)
 - ◆ VNIR (400-970nm, 2.44 nm)
 - ◆ SWIR (970-2500nm, 6.28 nm)
- ◆ Spatial Resolution
 - ◆ 9/23/2008: 1.2 m
 - ◆ 9/24/2008: 1.6 m
- ◆ Sidelap: 22%



AisaDUAL sensor assembly, side view
(AisaEAGLE on the right, AisaHAWK
on the left)

AisaDUAL sensor
assembly, back view

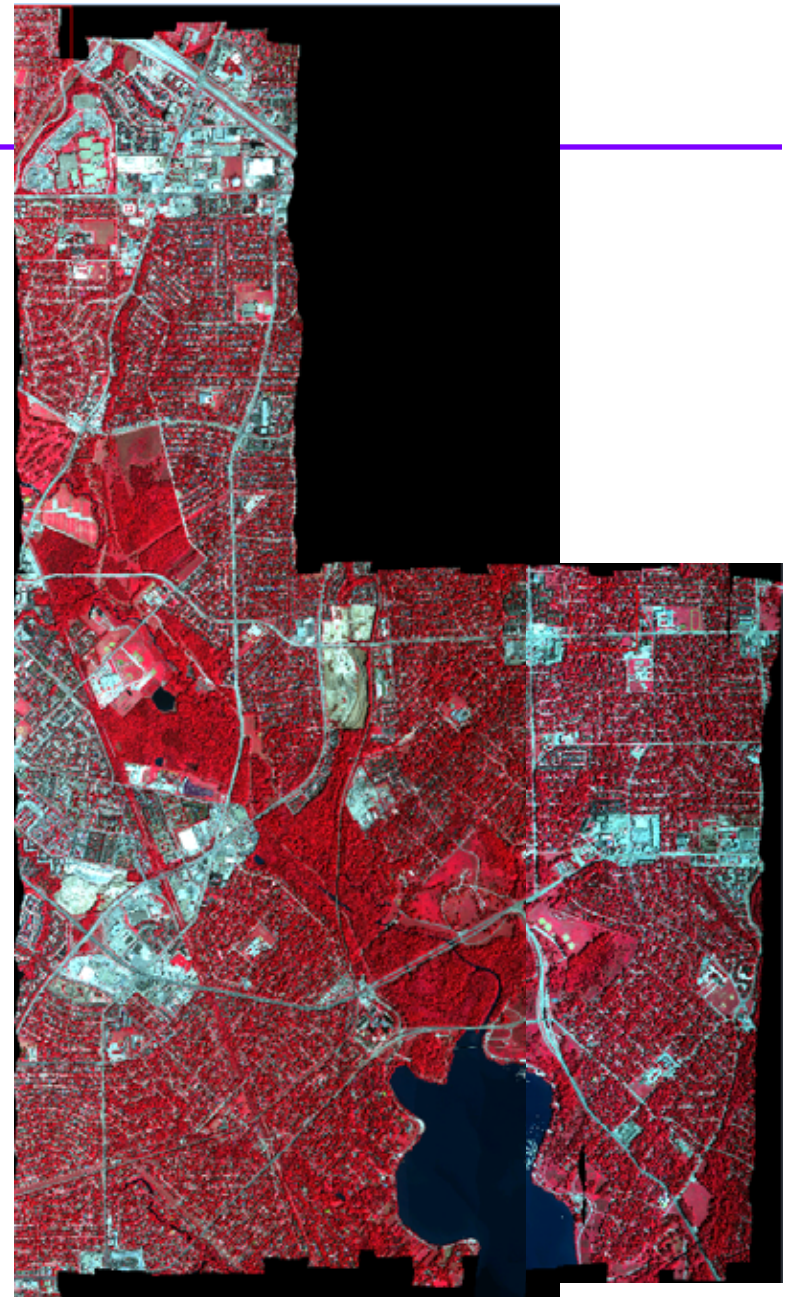
Mosaic of HSI

- ◆ **Color Infrared Composite Image**

- ◆ Red: 841.13 nm
- ◆ Green: 677.11 nm
- ◆ Blue: 561.66 nm

- ◆ **Typical Colors**

- ◆ Trees: Red
- ◆ Buildings: Cyan
- ◆ Water: Blue/black



In Situ Spectroradiometer Data Collection

◆ FieldSpec Pro ASD Spectroradiometer

- ◆ Spectral Range from 350 – 2500 nm
- ◆ Spectral Sampling of 1.4 nm in 350-1050 nm and 2nm in 1050-2050 nm range resulting in 2151 bands
- ◆ Scan time of less than 3 seconds



Spectroradiometer



High Intensity Contact Probe

In Situ Spectroradiometer Data Collection

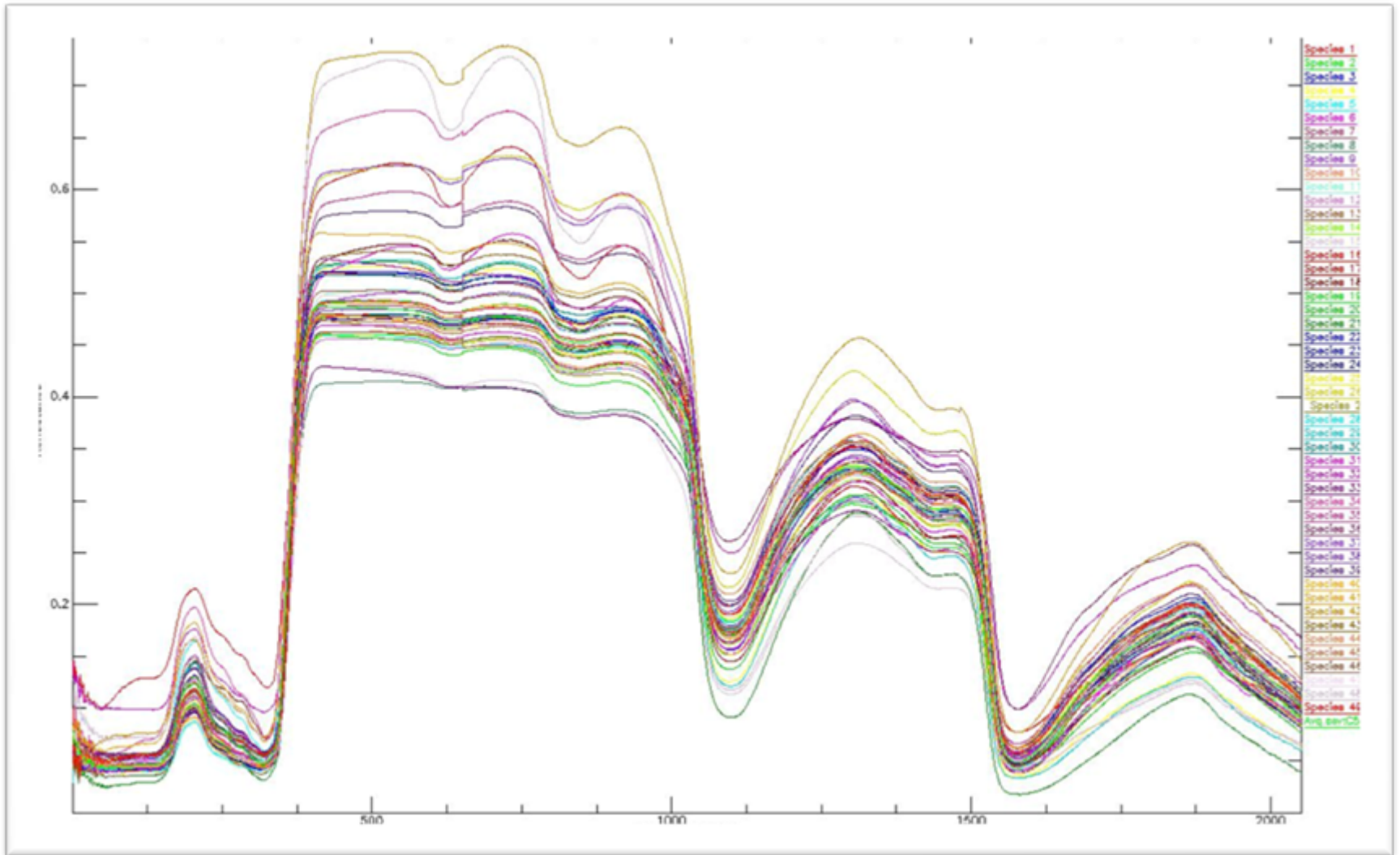
◆ Sampling areas

◆ Reverchon park

◆ Turtle Creek area



Reflectance Spectral Signature for 50 species



Mean Spectral Profile for each species used as Reference Spectra

Species Spectral Seperability analysis

Using GFLVQ approach (50 Testing Samples)

- ◆ About 60-72% of accuracy was achieved
- ◆ Double the % accuracy of the spectral angle mapping

Trial	Accuracy
1	64%
2	62%
3	62%
4	68%
5	64%
6	60%
7	70%
8	72%
9	68%
10	70%

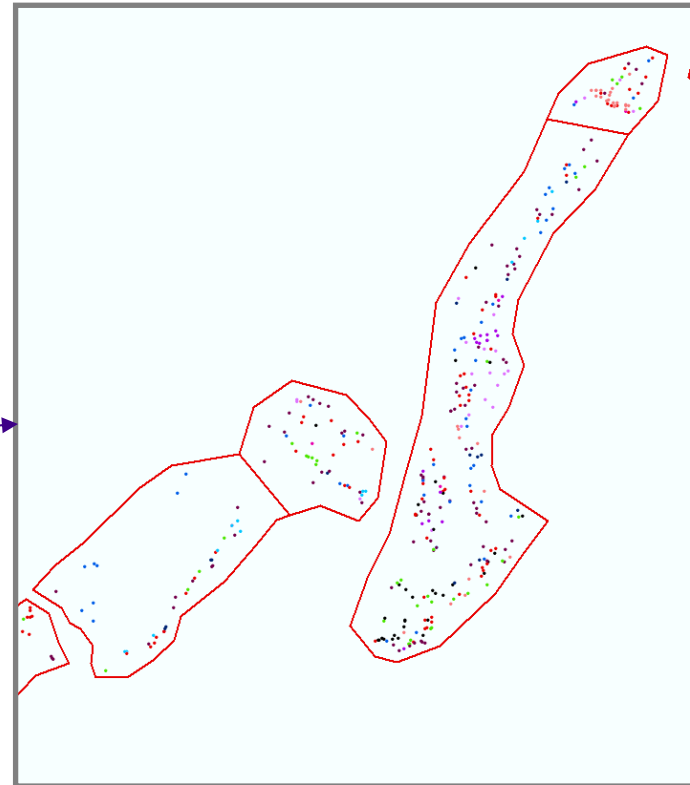
Trial	Accuracy
1	34%
2	30%
3	34%
4	42%
5	42%
6	36%
7	40%
8	42%
9	40%
10	42%

Urban Tree Field Survey Data by Half Association



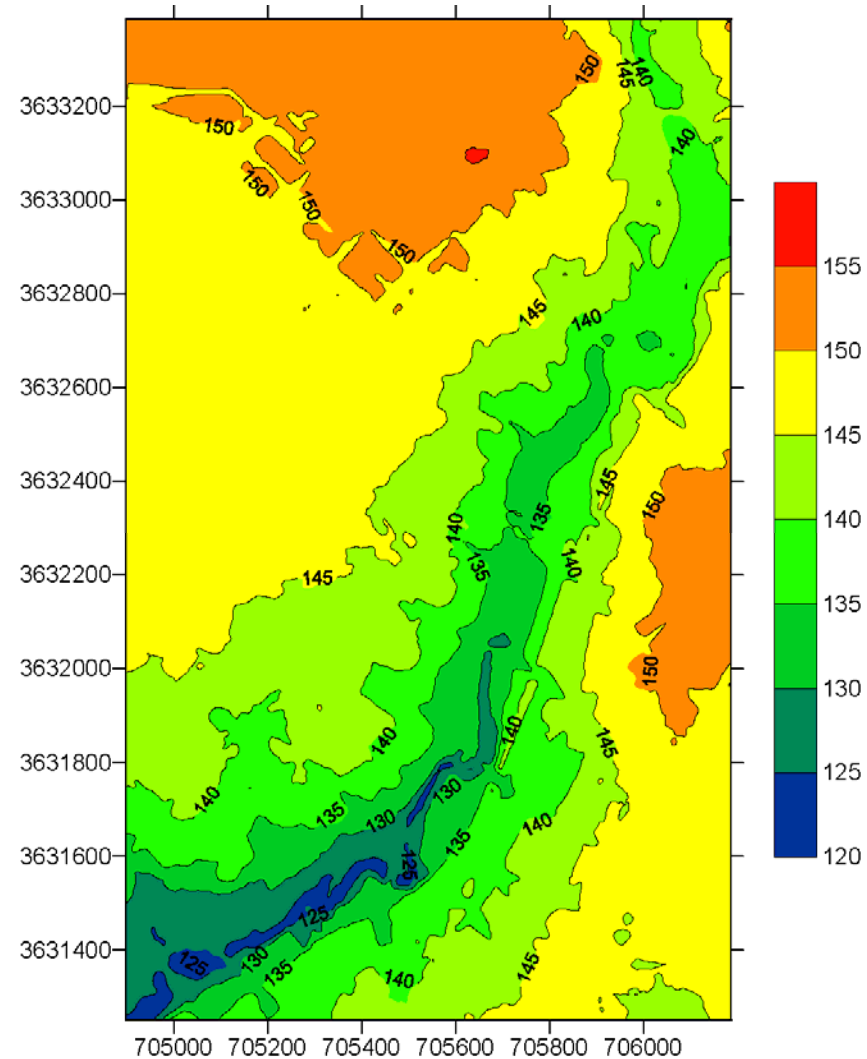
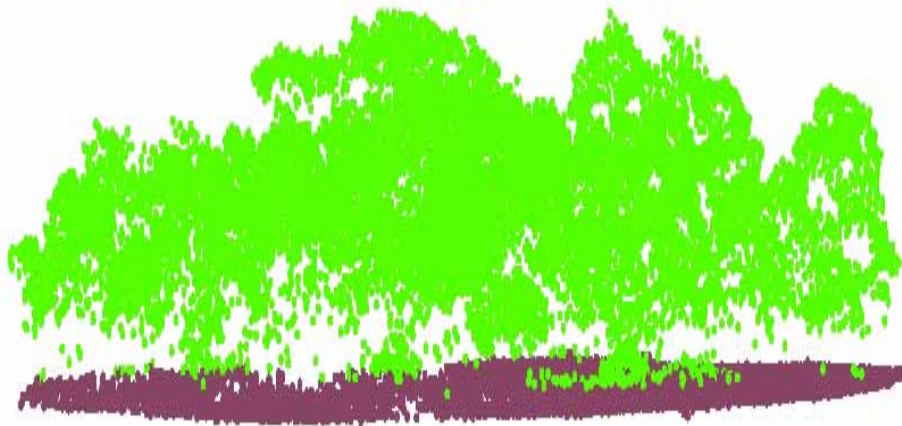
Turtle Creek Corridor

- ◆ Total 2602 trees surveyed.
- ◆ Total 46 species found
- ◆ 10 most frequently occurring species identified.

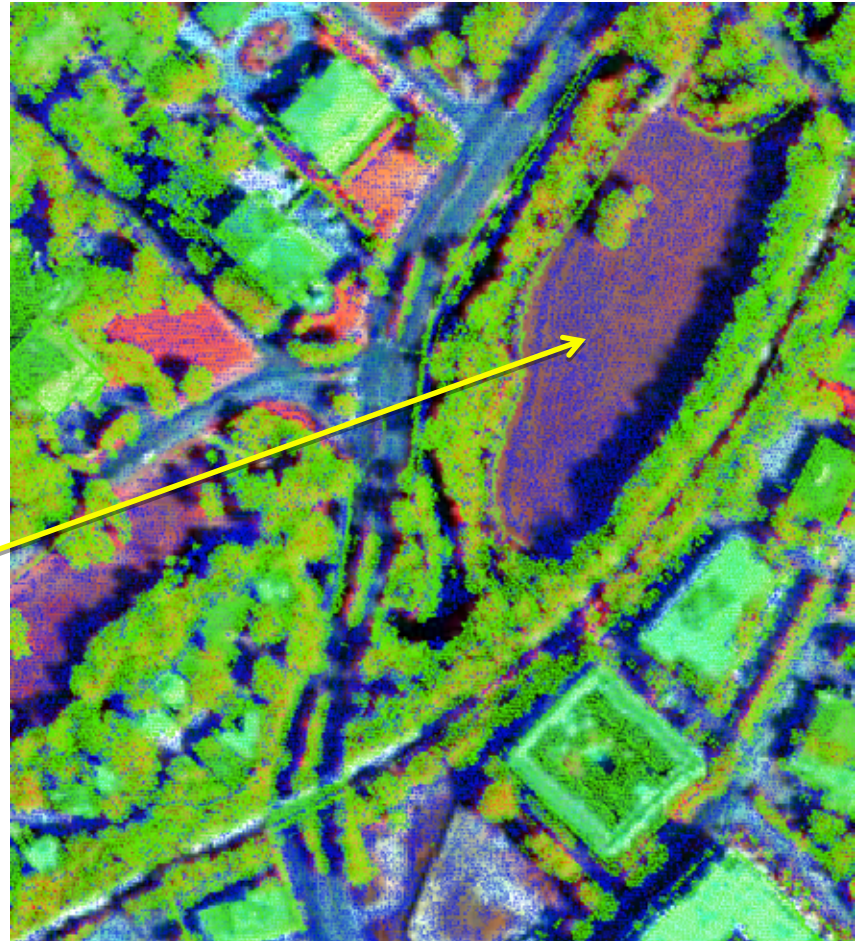
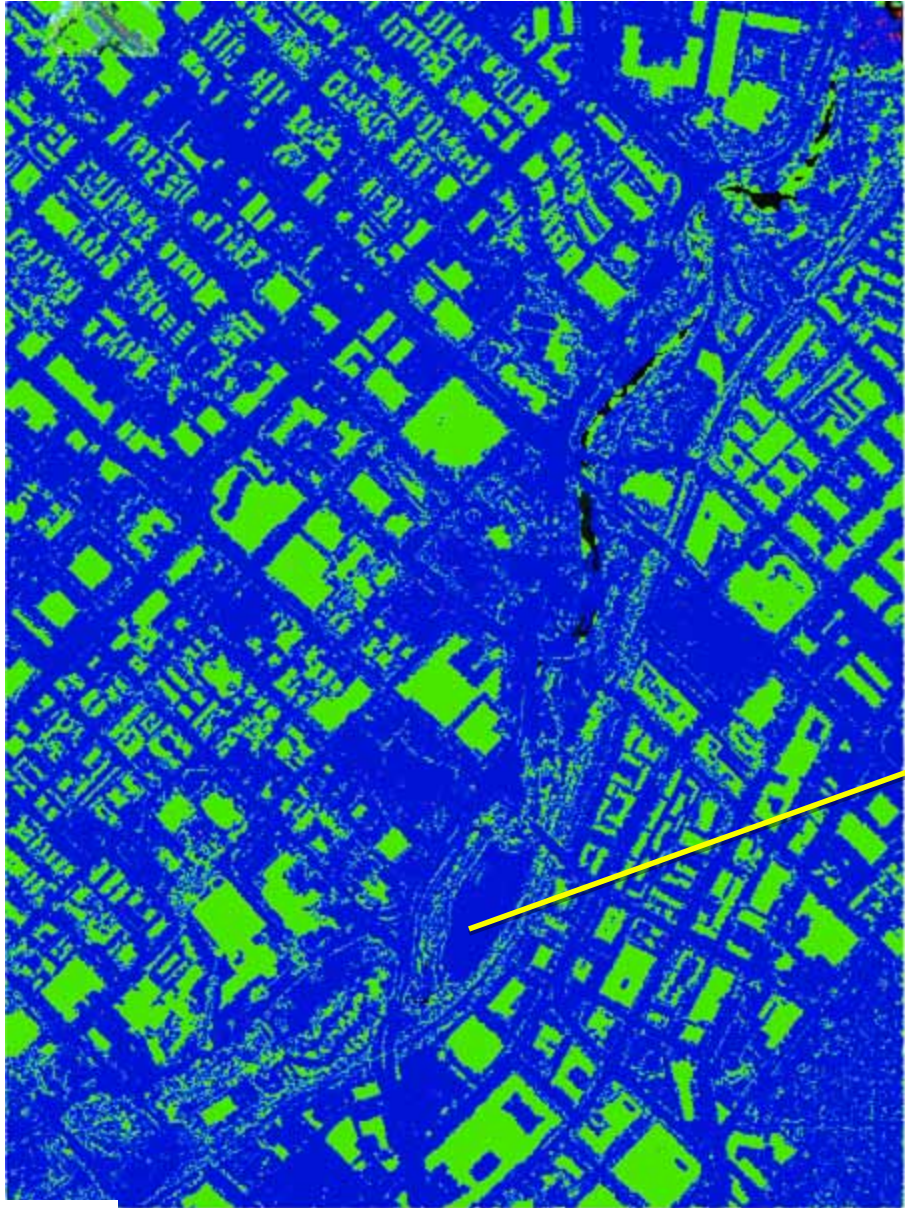


LiDAR Data Filtering

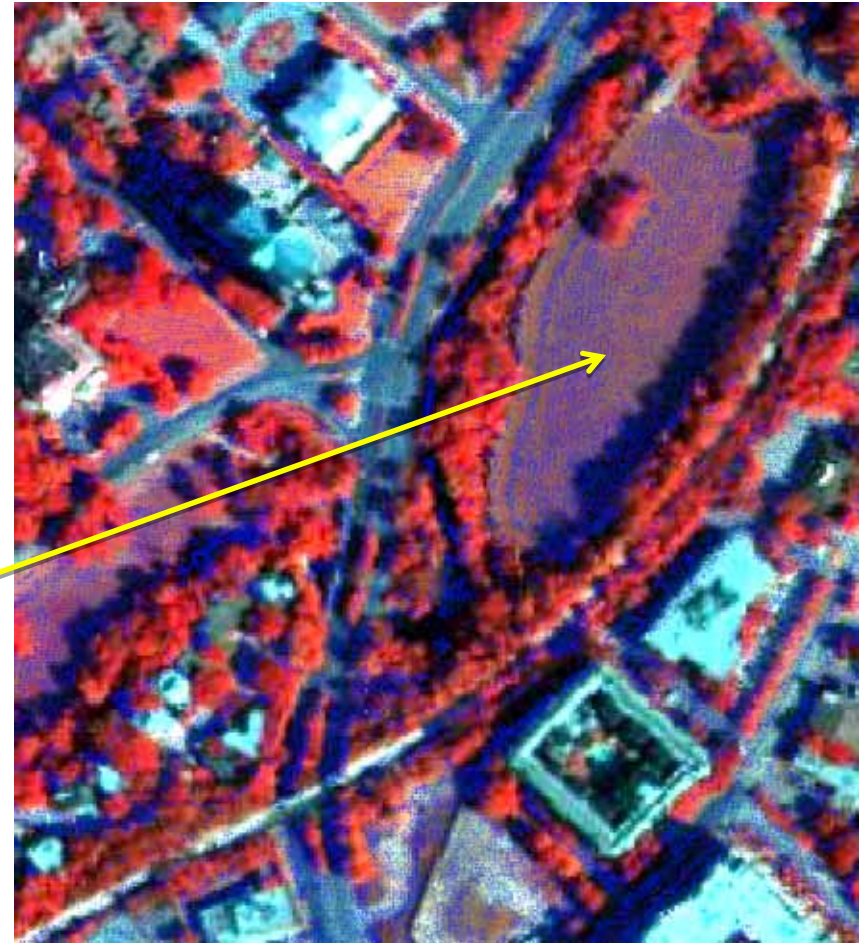
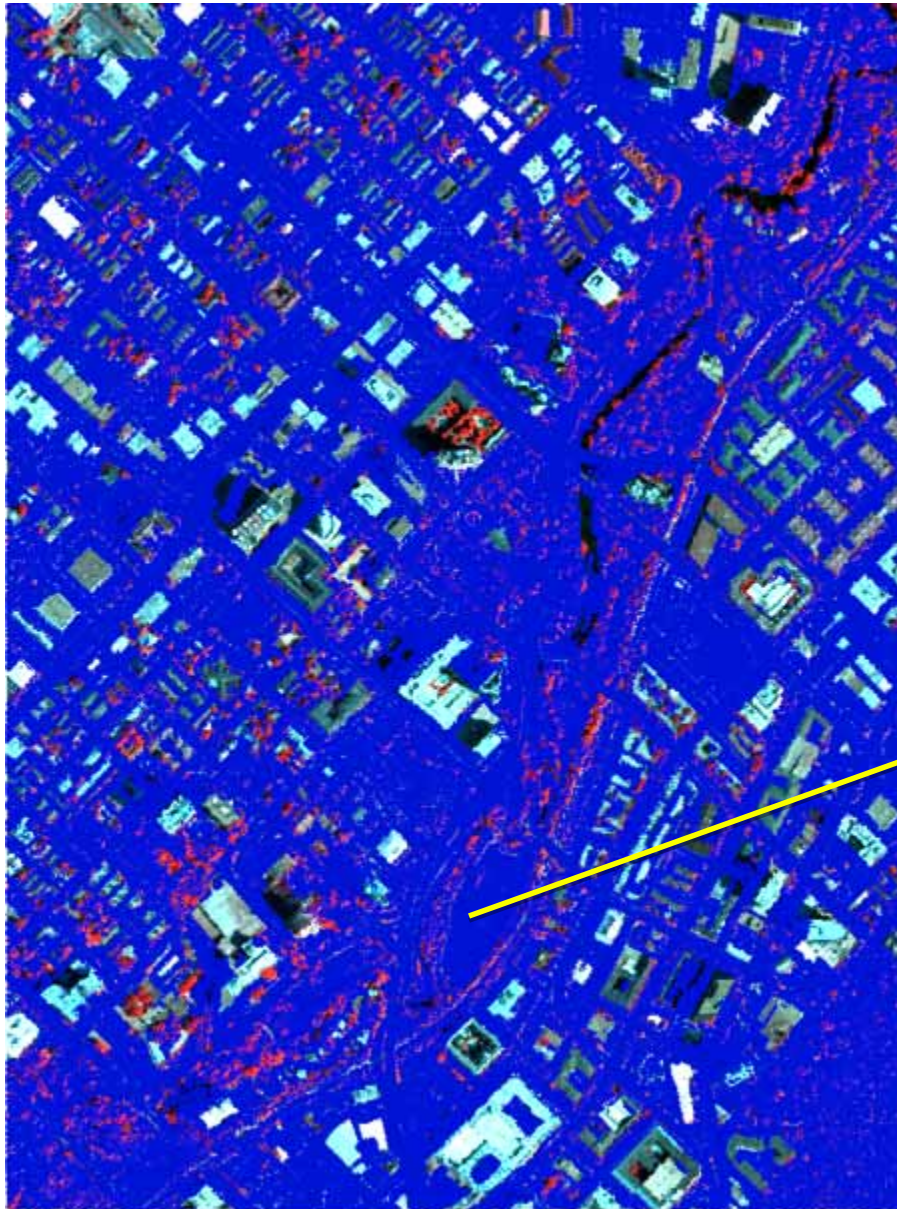
- ◆ Segmentation using MNN
- ◆ Ground and non-ground separation
- ◆ Digital Terrain Model generation



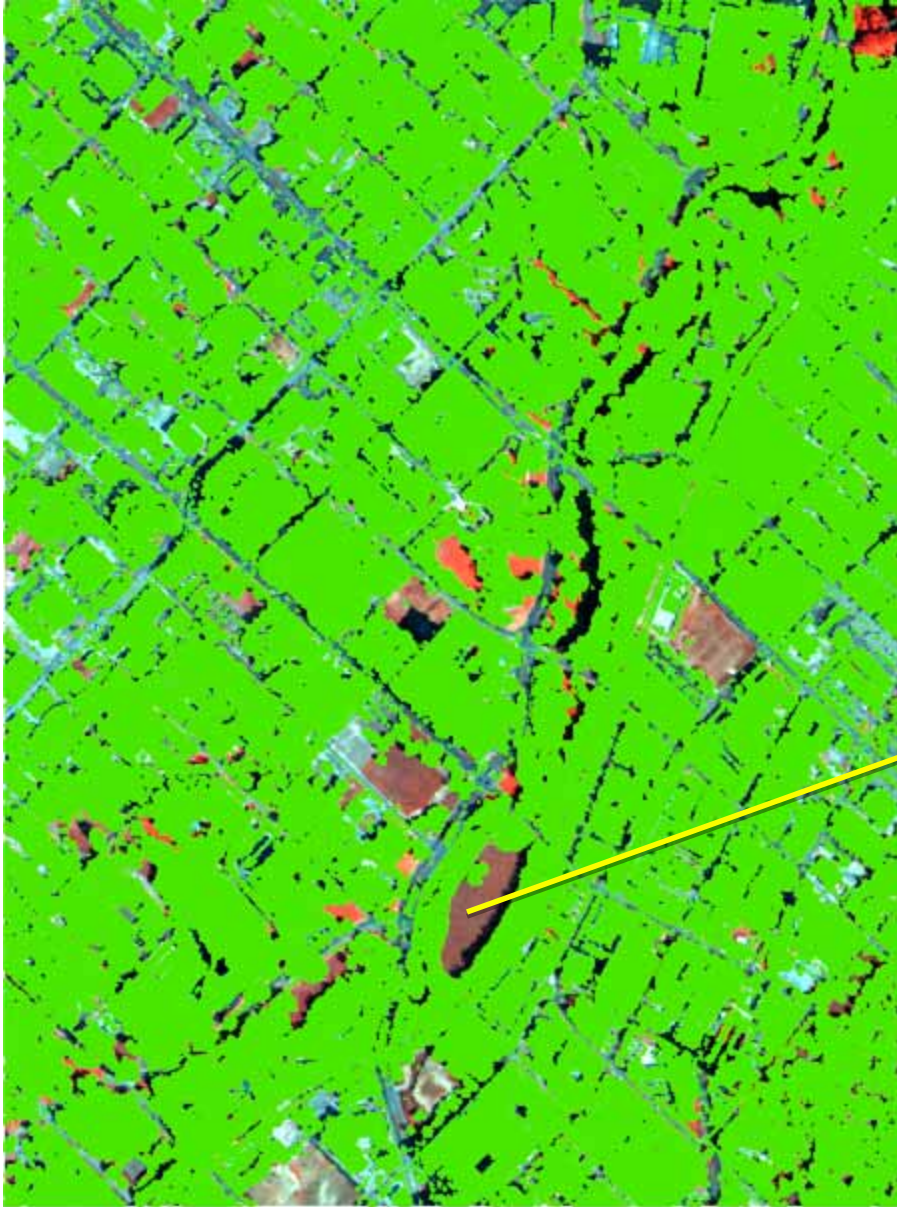
Lidar Filtering



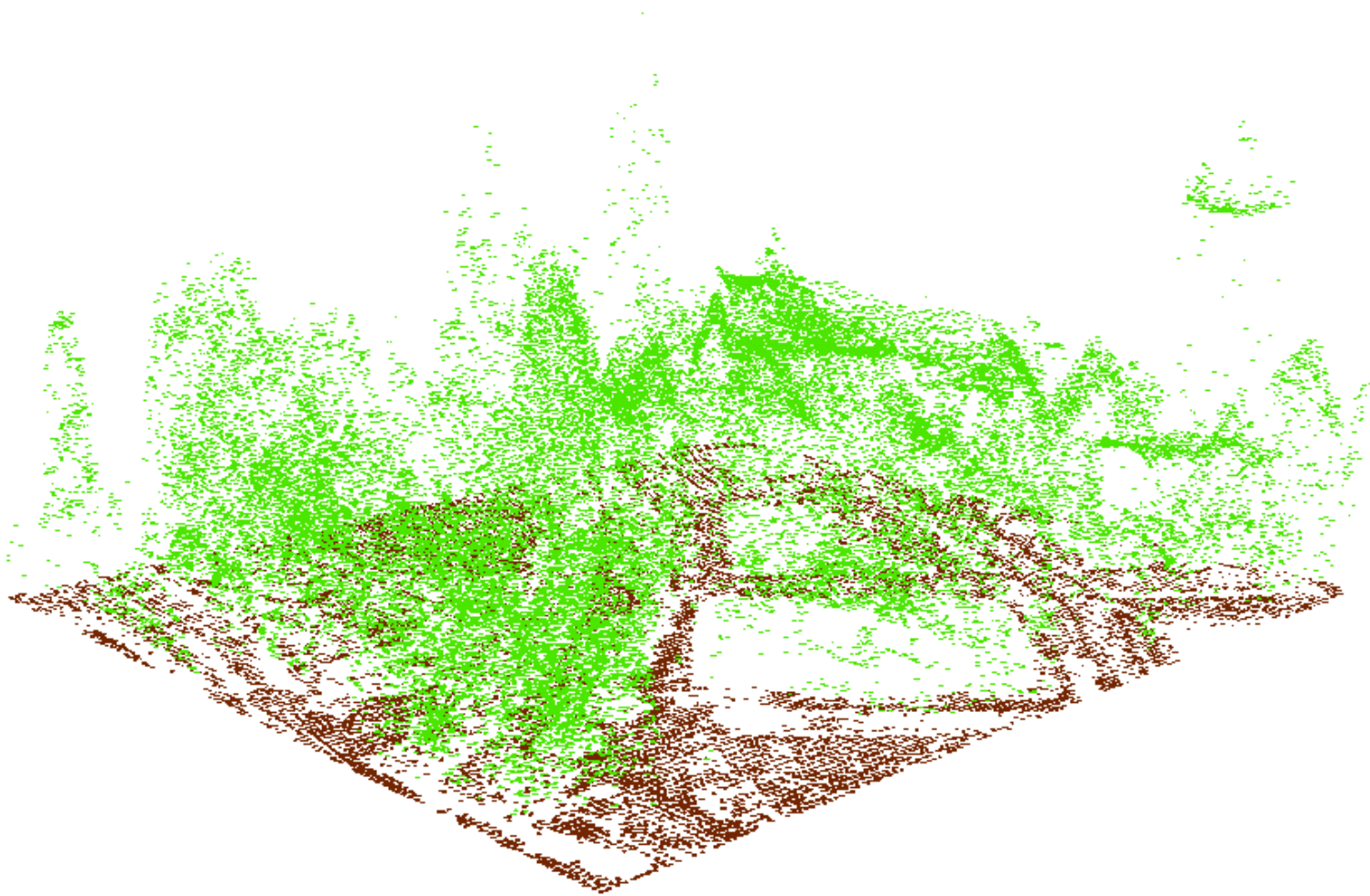
Ground points



Non-ground points



Lidar filtering of ground and non-ground points



LiDAR Data Filtering: Ground points



LiDAR Data Filtering: Non-ground

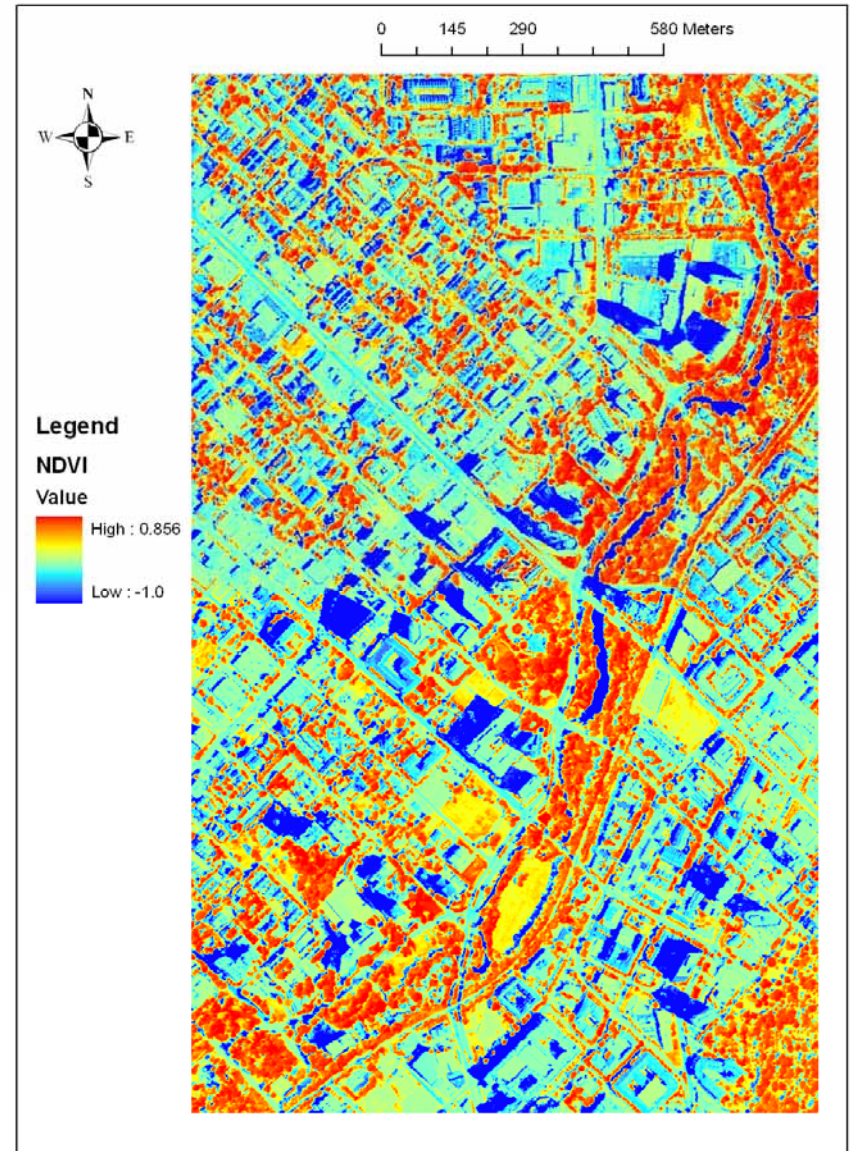


LiDAR Tree Mass Point Extraction

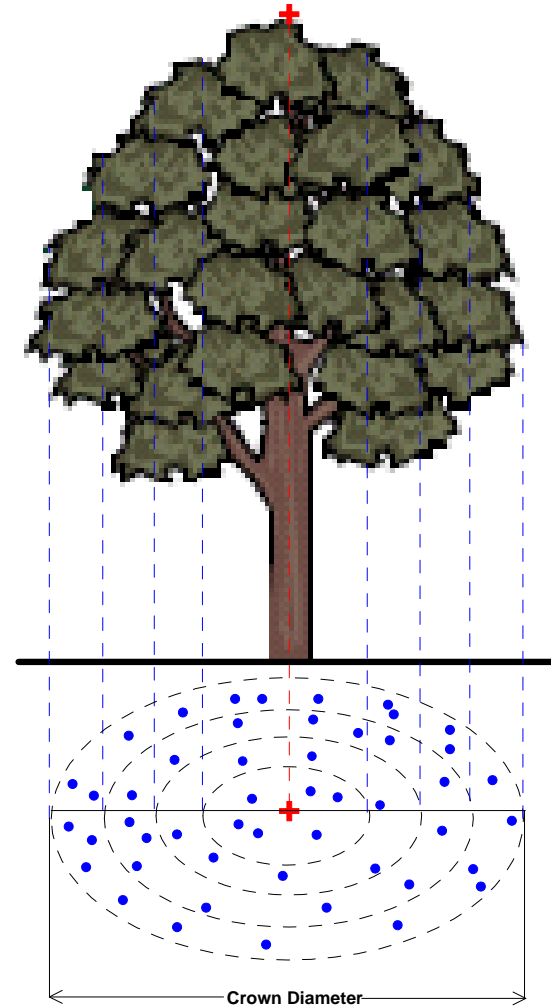
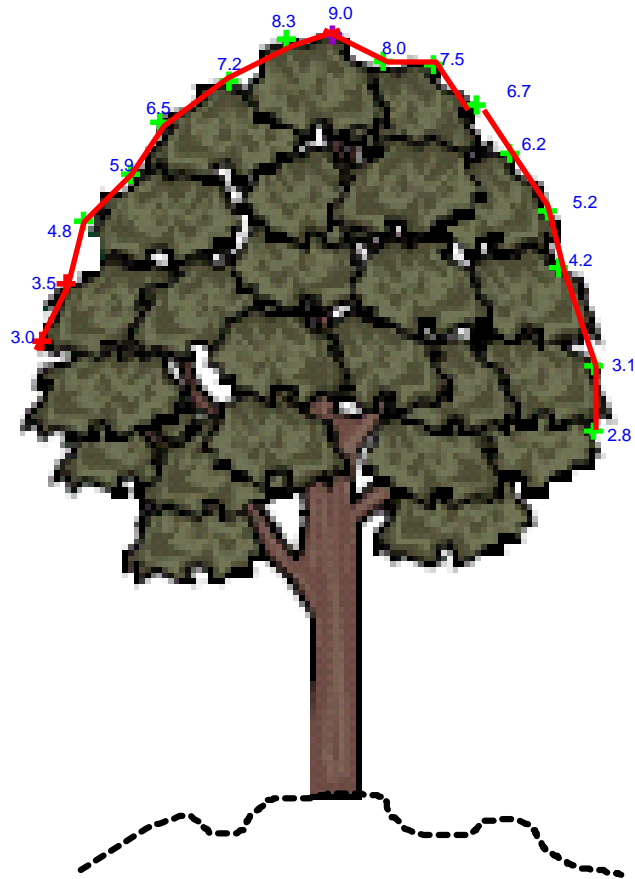
- ◆ Normalized Difference Vegetation Index (NDVI)

$$NDVI = \frac{\rho_{nir} - \rho_{red}}{\rho_{nir} + \rho_{red}}$$

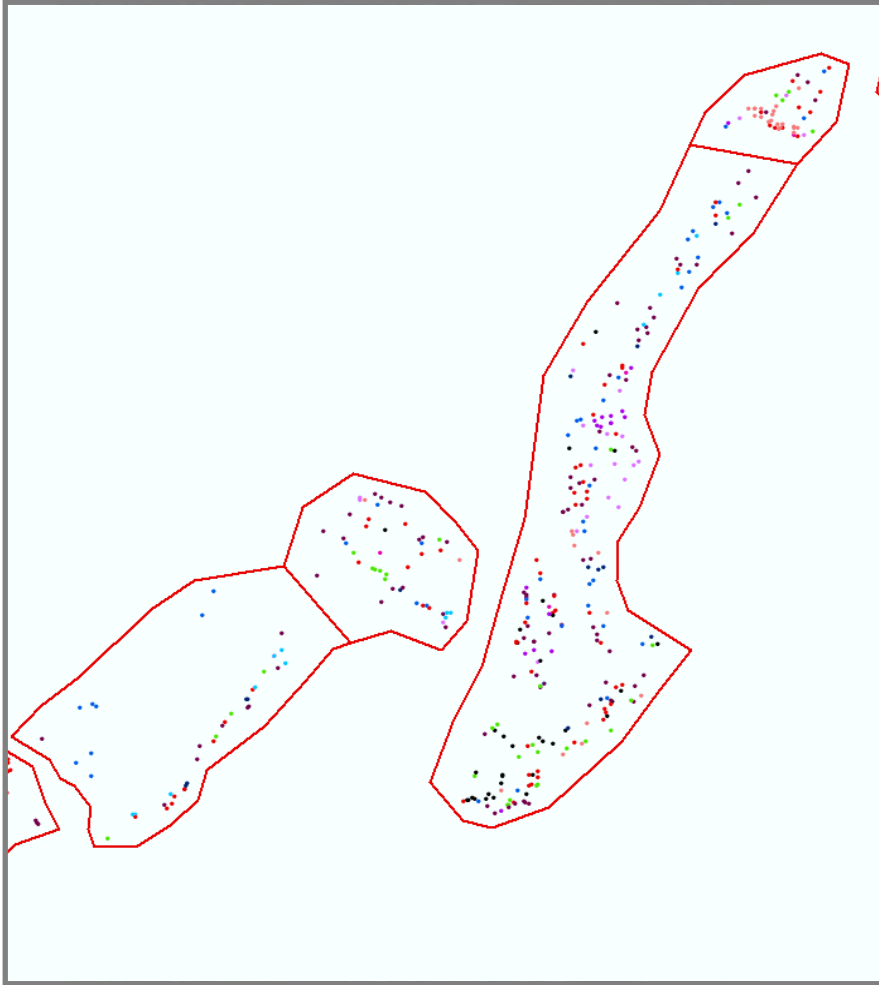
- ◆ Red: 660nm (band 113)
- ◆ Near-infrared: 860nm (band 198)



Urban Tree Top Identification & Canopy Delineation



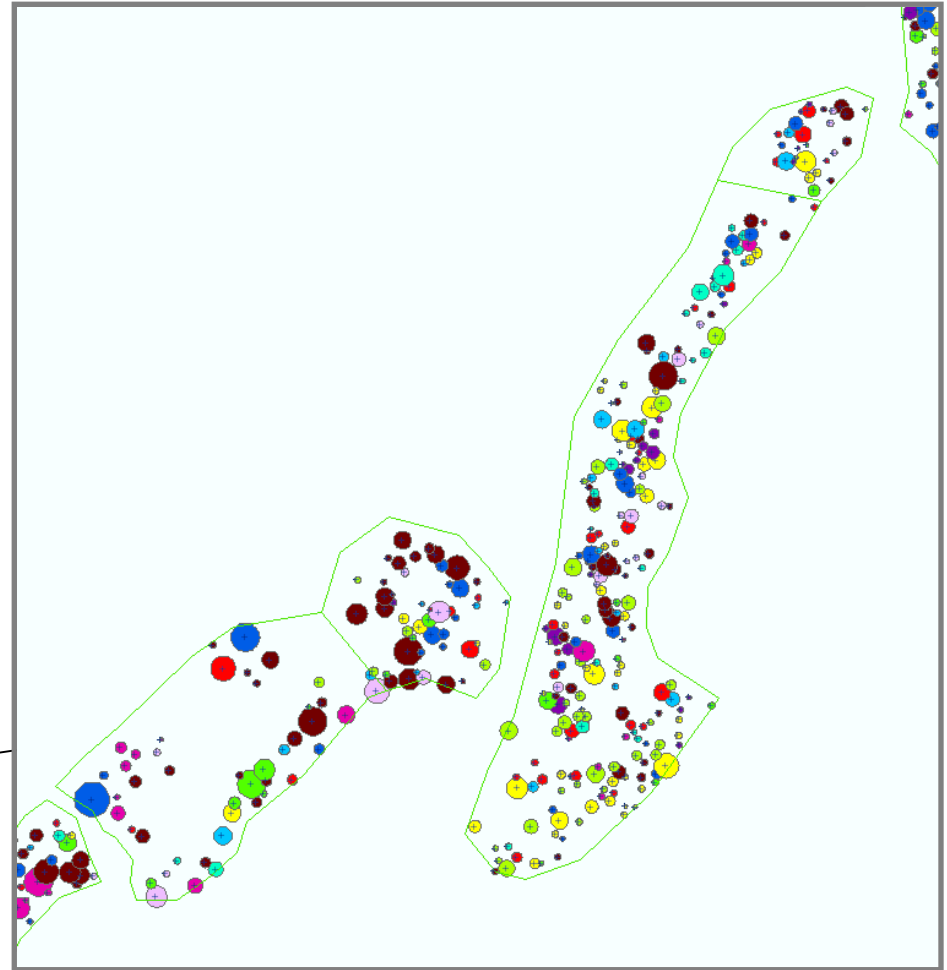
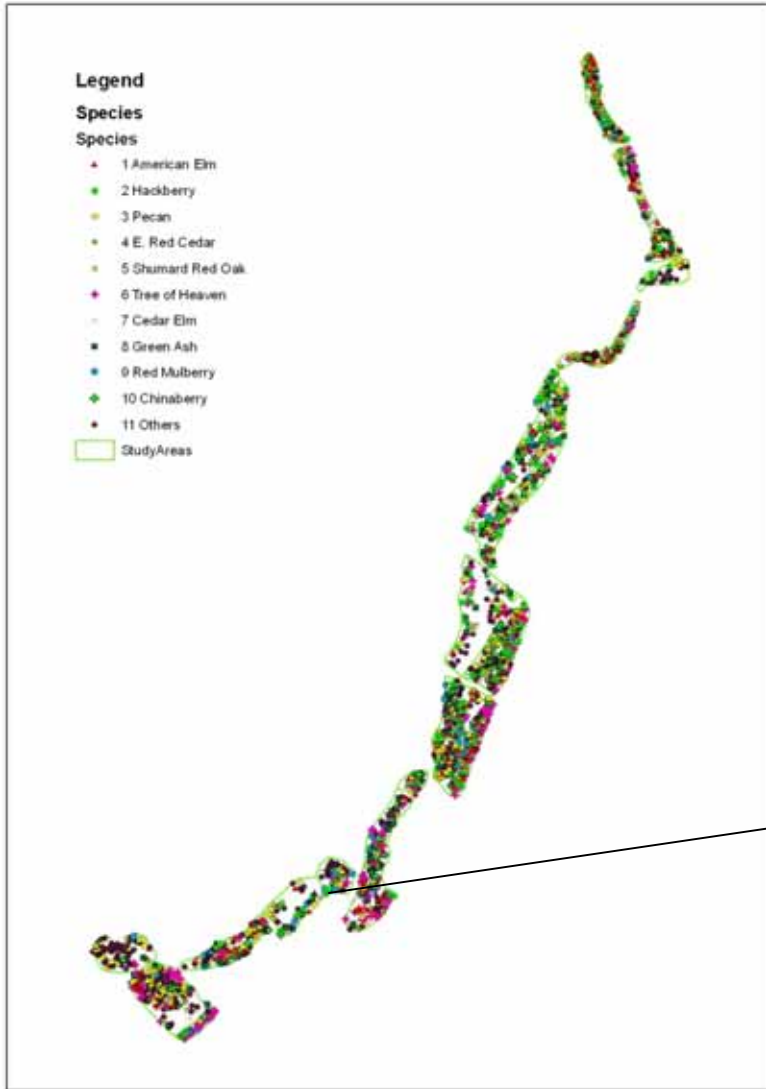
Urban Tree Top: Results



Urban Tree Canopy (UTC) Delineation : Results



Urban Tree Species (UTS) Identification: Results

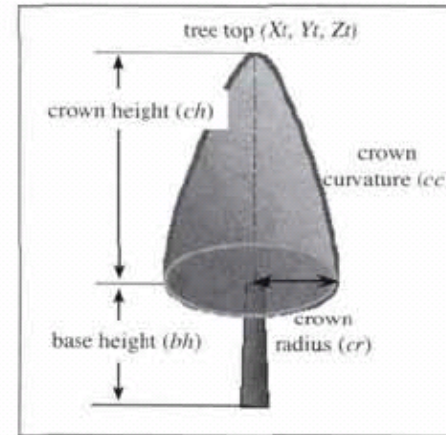


Accuracy Assessment

Species Name	Accuracy	Species Name	Accuracy
American Elm	39.39%	Bois d'arc	91.67%
Hackberry	47.89%	Sycamore	72.73%
Pecan	65.55%	Black Locust	87.50%
E. Red Cedar	62.93%	Redbud	100.00%
Shumard Red Oak	77.27%	Persimmon	100.00%
Tree of Heaven	76.36%	Slash pine	100.00%
Cedar Elm	83.54%	Gingko	100.00%
Green Ash	87.23%	Southern Magnolia	100.00%
Red Mulberry	84.62%	Dogwood	100.00%
Chinaberry	78.79%	White Ash	100.00%
Gum Bumelia	88.89%	Pear	100.00%
Baldcypress	84.00%	Chinese Pistache	100.00%
Cherry Laurel	95.00%	Chinese Tallow	100.00%
Boxelder	90.00%	Southern Catalpa	100.00%
Post Oak	100.00%	Sweetgum	100.00%
Live Oak	89.47%	Golden Raintree	100.00%
Bur Oak	94.12%	Black Walnut	100.00%
	94.12%	Honey Locust	100.00%
Crepe Myrtle	100.00%	Western Soapberry	100.00%
Black	93.75%	Catalpa	66.67%
Kappa	64.4%	Total Accuracy:	68.8%

Digital 3D Tree Canopy Model Construction

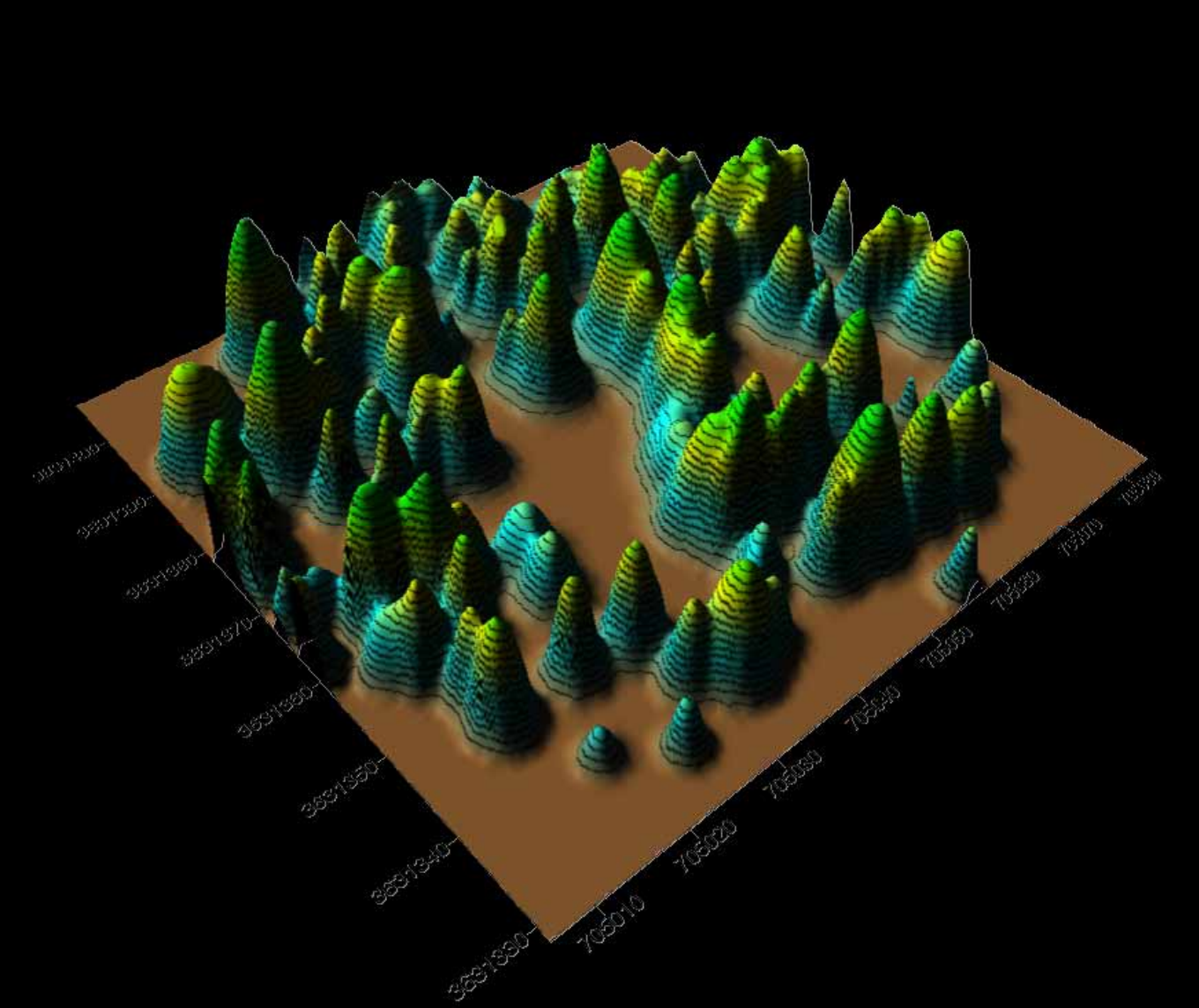
- ◆ Tree top locations (x_t, y_t)
- ◆ Tree heights (z)
- ◆ Tree base heights (bh)
- ◆ Tree crown depths (ch)
- ◆ Tree crown radius (cr)



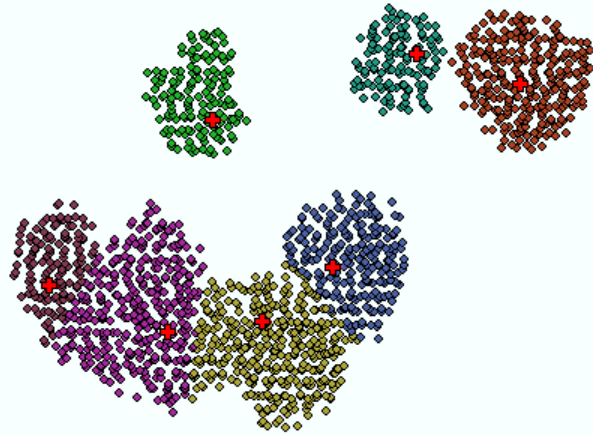
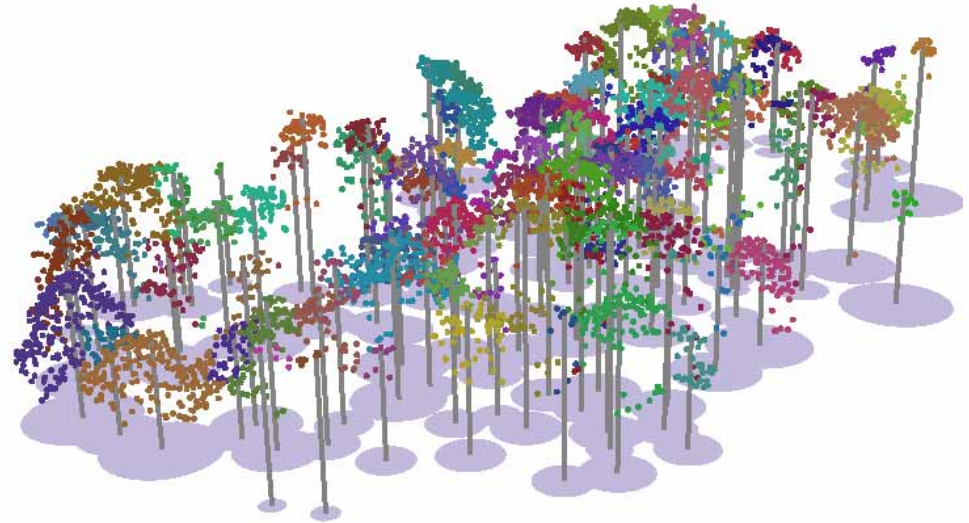
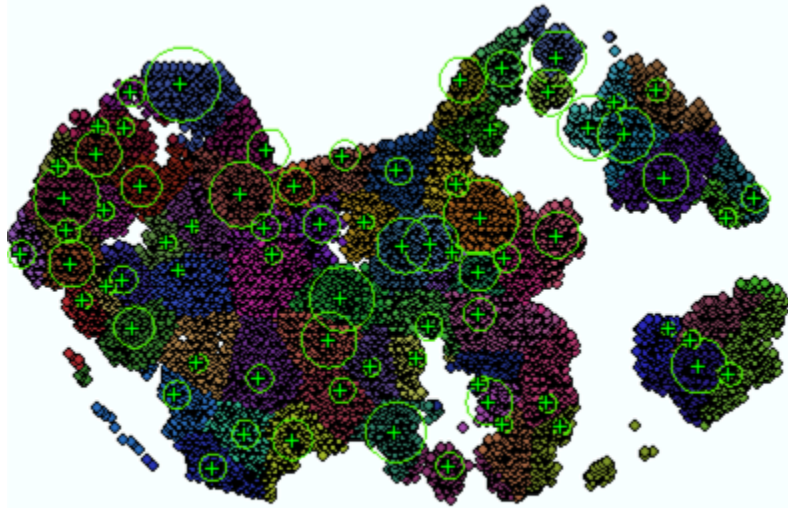
$$\frac{(z - bh)^n}{ch^n} + \frac{(x - x_t)^n + (y - y_t)^n}{cr^n} = 1$$

$$\begin{cases} n = 1 : \text{conical shape} \\ n = 2 : \text{elliptical shape} \end{cases}$$

Tree model: Results



Individual Tree Extraction and Visualization



Individual Tree Structure Model

