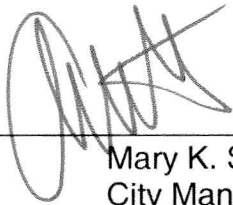


**JANUARY 16, 2013 CITY COUNCIL BRIEFING AGENDA
CERTIFICATION**


This certification is given pursuant to Chapter XI, Section 9 of the City Charter for the City Council Briefing Agenda dated January 16, 2013. We hereby certify, as to those contracts, agreements, or other obligations on this Agenda authorized by the City Council for which expenditures of money by the City are required, that all of the money required for those contracts, agreements, and other obligations is in the City treasury to the credit of the fund or funds from which the money is to be drawn, as required and permitted by the City Charter, and that the money is not appropriated for any other purpose.



Mary K. Suhm
City Manager

1/11/13

Date



Edward Scott
City Controller

1/11/13

Date

RECEIVED

2013 JAN 11 PM 5:31

CITY SECRETARY
DALLAS, TEXAS



COUNCIL BRIEFING AGENDA

January, 16, 2013

Date

(For General Information and Rules of Courtesy, Please See Opposite Side.)
(La Información General Y Reglas De Cortesía Que Deben Observarse
Durante Las Asambleas Del Consejo Municipal Aparecen En El Lado Opuesto, Favor De Leerlas.)

General Information

The Dallas City Council regularly meets on Wednesdays beginning at 9:00 a.m. in the Council Chambers, 6th floor, City Hall, 1500 Marilla. Council agenda meetings are broadcast live on WRR-FM radio (101.1 FM) and on Time Warner City Cable Channel 16. Briefing meetings are held the first and third Wednesdays of each month. Council agenda (voting) meetings are held on the second and fourth Wednesdays. Anyone wishing to speak at a meeting should sign up with the City Secretary's Office by calling (214) 670-3738 before 9:00 a.m. on the meeting date. Citizens can find out the name of their representative and their voting district by calling the City Secretary's Office.

Sign interpreters are available upon request with a 48-hour advance notice by calling (214) 670-5208 V/TDD. The City of Dallas is committed to compliance with the Americans with Disabilities Act. **The Council agenda is available in alternative formats upon request.**

If you have any questions about this agenda or comments or complaints about city services, call 311.

Rules of Courtesy

City Council meetings bring together citizens of many varied interests and ideas. To insure fairness and orderly meetings, the Council has adopted rules of courtesy which apply to all members of the Council, administrative staff, news media, citizens and visitors. These procedures provide:

- That no one shall delay or interrupt the proceedings, or refuse to obey the orders of the presiding officer.
- All persons should refrain from private conversation, eating, drinking and smoking while in the Council Chamber.
- Posters or placards must remain outside the Council Chamber.
- No cellular phones or audible beepers allowed in Council Chamber while City Council is in session.

"Citizens and other visitors attending City Council meetings shall observe the same rules of propriety, decorum and good conduct applicable to members of the City Council. Any person making personal, impertinent, profane or slanderous remarks or who becomes boisterous while addressing the City Council or while attending the City Council meeting shall be removed from the room if the sergeant-at-arms is so directed by the presiding officer, and the person shall be barred from further audience before the City Council during that session of the City Council. If the presiding officer fails to act, any member of the City Council may move to require enforcement of the rules, and the affirmative vote of a majority of the City Council shall require the presiding officer to act." Section 3.3(c) of the City Council Rules of Procedure.

Informacion General

El Ayuntamiento de la Ciudad de Dallas se reúne regularmente los miércoles en la Cámara del Ayuntamiento en el sexto piso de la Alcaidía, 1500 Marilla, a las 9 de la mañana. Las reuniones informativas se llevan a cabo el primer y tercer miércoles del mes. Estas audiencias se transmiten en vivo por la estación de radio WRR-FM 101.1 y por cablevisión en la estación *Time Warner CityCable* Canal 16. El Ayuntamiento Municipal se reúne el segundo y cuarto miércoles del mes para tratar asuntos presentados de manera oficial en la agenda para su aprobación. Toda persona que desee hablar durante la asamblea del Ayuntamiento, debe inscribirse llamando a la Secretaría Municipal al teléfono (214) 670-3738, antes de las 9 de la mañana del día de la asamblea. Para enterarse del nombre de su representante en el Ayuntamiento Municipal y el distrito donde usted puede votar, favor de llamar a la Secretaría Municipal.

Intérpretes para personas con impedimentos auditivos están disponibles si lo solicita con 48 horas de anticipación llamando al (214) 670-5208 (aparato auditivo V/TDD). La Ciudad de Dallas se esfuerza por cumplir con el decreto que protege a las personas con impedimentos, *Americans with Disabilities Act*. **La agenda del Ayuntamiento está disponible en formatos alternos si lo solicita.**

Si tiene preguntas sobre esta agenda, o si desea hacer comentarios o presentar quejas con respecto a servicios de la Ciudad, llame al 311.

Reglas de Cortesia

Las asambleas del Ayuntamiento Municipal reúnen a ciudadanos de diversos intereses e ideologías. Para asegurar la imparcialidad y el orden durante las asambleas, el Ayuntamiento ha adoptado ciertas reglas de cortesía que aplican a todos los miembros del Ayuntamiento, al personal administrativo, personal de los medios de comunicación, a los ciudadanos, y a visitantes. Estos reglamentos establecen lo siguiente:

- Ninguna persona retrasará o interrumpirá los procedimientos, o se negará a obedecer las órdenes del oficial que preside la asamblea.
- Todas las personas deben abstenerse de entablar conversaciones, comer, beber y fumar dentro de la cámara del Ayuntamiento.
- Anuncios y pancartas deben permanecer fuera de la cámara del Ayuntamiento.
- No se permite usar teléfonos celulares o enlaces electrónicos (*paggers*) audibles en la cámara del Ayuntamiento durante audiencias del Ayuntamiento Municipal.

"Los ciudadanos y visitantes presentes durante las asambleas del Ayuntamiento Municipal deben obedecer las mismas reglas de comportamiento, decoro y buena conducta que se aplican a los miembros del Ayuntamiento Municipal. Cualquier persona que haga comentarios impertinentes, utilice vocabulario obsceno o difamatorio, o que al dirigirse al Ayuntamiento lo haga en forma escandalosa, o si causa disturbio durante la asamblea del Ayuntamiento Municipal, será expulsada de la cámara si el oficial que esté presidiendo la asamblea así lo ordena. Además, se le prohibirá continuar participando en la audiencia ante el Ayuntamiento Municipal. Si el oficial que preside la asamblea no toma acción, cualquier otro miembro del Ayuntamiento Municipal puede tomar medidas para hacer cumplir las reglas establecidas, y el voto afirmativo de la mayoría del Ayuntamiento Municipal precisará al oficial que esté presidiendo la sesión a tomar acción." Según la sección 3.3(c) de las reglas de procedimientos del Ayuntamiento.

AGENDA
CITY COUNCIL BRIEFING MEETING
WEDNESDAY, JANUARY 16, 2013
CITY HALL
1500 MARILLA
DALLAS, TEXAS 75201
9:00 A.M.

9:00 am Invocation and Pledge of Allegiance 6ES

 Special Presentations

 Open Microphone Speakers

VOTING AGENDA 6ES

1. Approval of Minutes of the December 5, 2012 City Council Meeting
2. Consideration of appointments to boards and commissions and the evaluation and duties of board and commission members (List of nominees is available in the City Secretary's Office)

Briefings 6ES

- A. Dallas/Fort Worth International Airport: Commercial Development Land Use Plan 2012
- B. Proposed 2012 Bond Program Project Implementation Schedule

Lunch

- C. Dallas/Fort Worth International Airport Board of Directors Nomination/Appointment Process

ITEMS FOR INDIVIDUAL CONSIDERATION

City Secretary's Office

3. Consideration of appointments to the Dallas/Fort Worth International Airport Board of Directors for Places 1, 5 and 11 (Closed Session, if necessary, Personnel, Sec. 551.074, T.O.M.A.) (List of nominees in the City Secretary's Office)

AGENDA
CITY COUNCIL BRIEFING MEETING
WEDNESDAY, JANUARY 16, 2013

Closed Session 6ES

Attorney Briefings (Sec. 551.071 T.O.M.A.)

- City of Dallas v. Viceroy Regal, L.P., et al, Cause Nos. CC-11-05626-A and CC-11-05620-E
- City of Dallas vs. All-Tex Pipe & Supply, II, L.P., et al, Cause No. CC-11-02758-D
- Legal issues regarding gas drilling and production.
- National Solid Wastes Management Association et al. v. City of Dallas et al., Civil Action No. 3:11-cv-03200-0
- Staci Williams v. City of Dallas, Cause No. 3:11-CV-00397-P

Open Microphone Speakers 6ES

The above schedule represents an estimate of the order for the indicated briefings and is subject to change at any time. Current agenda information may be obtained by calling (214) 670-3100 during working hours.

Note: An expression of preference or a preliminary vote may be taken by the Council on any of the briefing items.

A closed executive session may be held if the discussion of any of the above agenda items concerns one of the following:

1. Contemplated or pending litigation, or matters where legal advice is requested of the City Attorney. Section 551.071 of the Texas Open Meetings Act.
2. The purchase, exchange, lease or value of real property, if the deliberation in an open meeting would have a detrimental effect on the position of the City in negotiations with a third person. Section 551.072 of the Texas Open Meetings Act.
3. A contract for a prospective gift or donation to the City, if the deliberation in an open meeting would have a detrimental effect on the position of the City in negotiations with a third person. Section 551.073 of the Texas Open Meetings Act.
4. Personnel matters involving the appointment, employment, evaluation, reassignment, duties, discipline or dismissal of a public officer or employee or to hear a complaint against an officer or employee. Section 551.074 of the Texas Open Meetings Act.
5. The deployment, or specific occasions for implementation of security personnel or devices. Section 551.076 of the Texas Open Meetings Act.
6. Deliberations regarding economic development negotiations. Section 551.087 of the Texas Open Meetings Act.

AGENDA ITEM # 3

KEY FOCUS AREA: Make Government More Efficient, Effective and Economical

AGENDA DATE: January 16, 2013

COUNCIL DISTRICT(S): All

DEPARTMENT: City Secretary

CMO: Rosa Rios, 670-5654

MAPSCO: N/A

SUBJECT

Consideration of appointments to the Dallas/Fort Worth International Airport Board of Directors for Places 1, 5 and 11 (Closed Session, if necessary, Personnel, Sec. 551.074, T.O.M.A.) (List of nominees in the City Secretary's Office)

BACKGROUND

The Dallas/Fort Worth (D/FW) International Airport Board was created by agreement between the City of Dallas and the City of Fort Worth. The Dallas City Council is authorized to appoint six (6) members to the Dallas/Fort Worth International Airport Board (Place Nos. 1, 4, 5, 6, 9 and 11). The terms for Places 1, 5 and 11 expire on January 31st of odd-numbered years; and the terms for Places 4, 6 and 9 expire on January 31st of even-numbered years. Per City Council Resolution No. 76-1888, the “duly elected Mayor of the City of Dallas is automatically appointed to fill Place 10.”

Previous practice of the City Council has been for City Councilmembers to nominate individuals before terms expire (between October and December), with special attention given to including “persons of all races and ethnicity” (Dallas City Charter, Chapter XXIV, Section 13(d)). Nominees then undergo conflict of interest/background checks and are interviewed by the Transportation and Environment Council Committee (TEC), with final recommendations for appointment being presented to the City Council in mid-January (terms expire on January 31st of each year).

The City Council has the opportunity to appoint individuals recommended by the TEC or make substitute appointments as long as the substitute nominee(s) were interviewed by the TEC. The top three recommended nominees are Regina Montoya, Curtis Ransom, and Forrest Smith.

PRIOR ACTION/REVIEW (COUNCIL, BOARDS, COMMISSIONS)

On November 16, 2011, the City Council approved Resolution No. 11-3106 formalizing the selection process for use in appointing members to the DFW Board.

At its December 10, 2012 meeting, the TEC interviewed all four (4) nominees submitted for possible appointment to the board for places 1, 5 and 11 and subsequently selected Regina Montoya, Curtis Ransom, and Forrest Smith as the top three nominees to recommend to the City Council for appointment. Each nominee is recommended for a two-year term.

FISCAL INFORMATION

No cost consideration to the City.

January 16, 2013

WHEREAS, pursuant to the CONTRACT and AGREEMENT between the City of Dallas and the City of Fort Worth, as amended, the City Council of the City of Dallas is authorized to appoint six (6) members to the DALLAS/FORT WORTH INTERNATIONAL AIRPORT BOARD, such appointments to be evidenced by a resolution on file in the Dallas city records; and

WHEREAS, each Dallas board member shall be appointed to occupy designated Place Nos. 1, 4, 5, 6, 9, 11 and Place 10 shall at all times be filled by the duly elected Mayor of the City of Dallas; and

WHEREAS, the terms of office of three of the Dallas appointed members serving in Places 01, 05 and 11 expire January 31, 2013;

WHEREAS, Resolution No. 12-0312 was approved by the City Council on January 25, 2012 reappointing Robert Hsueh to Place 04, Bernice J. Washington to Place 06, and Sam Coats to Place 09 with terms to expire January 31, 2014;

WHEREAS, Resolution No. 12-0312 was approved by the City Council on January 25, 2012 appointing Forrest Smith to Place 01, filling an unexpired term with the term to expire January 31, 2013;

WHEREAS, on September 7, 2012, Brenda Reyes resigned creating a vacancy in Place 11;

Now, Therefore,

BE IT RESOLVED BY THE CITY COUNCIL OF THE CITY OF DALLAS:

Section 1: The following individuals are hereby appointed to Places 01, 05 and 11 on the DALLAS/FORT WORTH INTERNATIONAL AIRPORT BOARD with terms to expire January 31, 2015:

Section 2: That, upon selection of individuals to serve on the DFW Board, the City Secretary's Office shall assign these individuals to one of the available board places.

Section 3: That this resolution shall take effect immediately from and after its passage in accordance with the provisions of the Charter of the City of Dallas, and it is accordingly so resolved.

Memorandum



CITY OF DALLAS

DATE January 11, 2013

TO The Honorable Mayor and Members of the City Council

SUBJECT Dallas/Fort Worth International Airport Briefing on Commercial Development Land Use Plan 2012

On January 16, 2013, the City Council will be briefed on the Commercial Development Land Use Plan 2012. John Terrell, Vice President of Commercial Development will present the attached briefing.

Please let me know if you have questions or need additional information.

A handwritten signature in black ink, appearing to read 'Mary K. Suhm', with a small flourish at the end.

Mary K. Suhm
City Manager

Attachment

c: Thomas P. Perkins, Jr., City Attorney
Rosa Rios, City Secretary
Craig Kinton, City Auditor
Daniel Solis, Administrative Judge
A.C. Gonzalez, First Assistant City Manager
Ryan S. Evans, Assistant City Manager
Forest E. Turner, Assistant City Manager
Joey Zapata, Assistant City Manager
Jeanne Chipperfield, Chief Financial Officer
Stephanie Cooper, Assistant to the City Manager



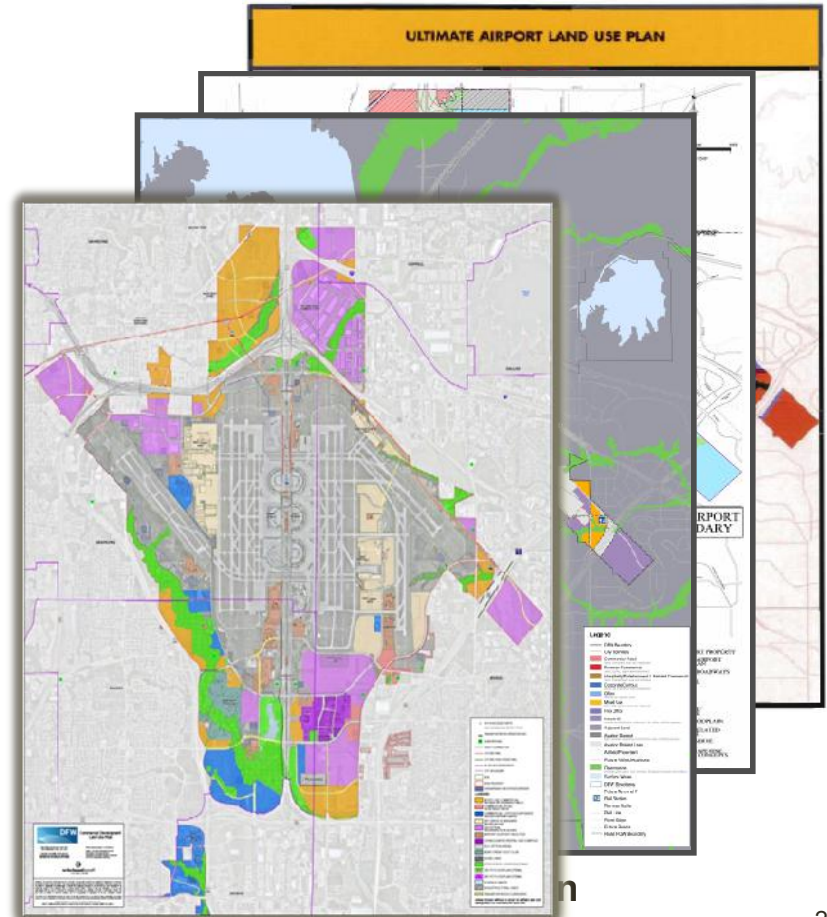
Dallas/Fort Worth International Airport Commercial Development Department

Dallas City Council Briefing
Commercial Development Land Use Plan 2012
January 16, 2013

Commercial Land Use Plan

A Land Use Plan has always been in place and provides the basis and framework for long-term development.

- The current 2012 plan contains fundamental elements of the 1967, 1974, 1987, 1997, 2001, and 2007 plans
- Defines both direct aviation uses and indirect non-aviation commercial uses
- Promotes the highest and best use for compatible development that is enduring, sustainable and financially sound
- Leverages uniqueness of the DFW Airport identity and experience
- 2007 plan approved by the DFW Board and the FAA



2012 Land Use Plan

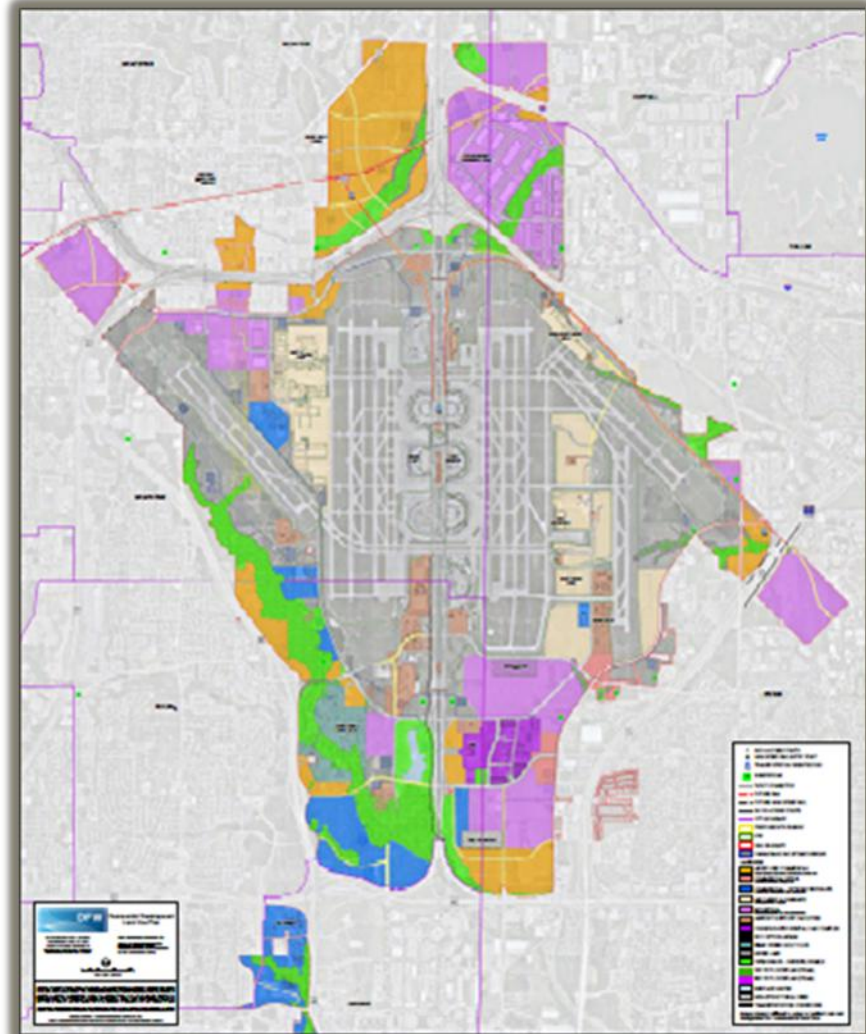
Commercial Development Land Use Plan 2012

- SH114 ACCESS POINTS
- HIGH SPEED RAIL ENTRY POINT
- TOD** TRANSPORTATION ORIENTED DEV.
- SS SUBSTATIONS
- TxDOT CONNECTOR
- FUTURE RAIL
- FUTURE HIGH SPEED RAIL
- SH 161 ACCESS POINTS
- CITY BOUNDARY
- AOA
- DFW PROPERTY
- CHESAPEAKE PAD SITES/CORRIDOR

LANDUSE:

- MIXED USE COMMERCIAL
Retail, restaurant, office, hotel, entertainment, & related uses
- COMMERCIAL RETAIL
Local retail, restaurant, & related uses
- COMMERCIAL - OFFICE/CORPORATE
Campus style & low/mid-rise office & related uses
- AIR CARGO & HANGARS
Direct aviation uses & support
- INDUSTRIAL
Warehouses/distribution, flex office, light assembly
- AIRPORT SUPPORT FACILITIES
- CONSOLIDATED RENTAL CAR COMPLEX
- RCC OPTION AREAS
- BEAR CREEK GOLF CLUB
- NOISE LAND
- OPEN SPACE - UNDEVELOPABLE
- 100 YR FLOODPLAIN (FEMA)
- 500 YR FLOODPLAIN (FEMA)
- SURFACE WATER
- NON-STRUCTURAL USES
- TRANSPORTATION CORRIDORS

Areas shown without a color or pattern are not designated for commercial land use.



Commercial Land Use Plan 2012

Project Outline

DEFINITION

The Commercial Development Land Use Plan is:

- A guideline, not a zoning document
- Reflects a vision for existing and future commercial land uses at DFW
- Land use plan map and land use category descriptions

PURPOSE

•To provide a general pattern for the location, distribution and character of future commercial land uses at DFW, compatible with existing airport components

- Impacted by the physical, environmental, economic, and operational conditions at DFW
- Intended to balance vision, constraints, and flexibility

BACKGROUND

•Updated periodically to reflect changes in market conditions, the Airport Layout Plan, various airport master plans (such as utilities and transportation), and other factors

- The last plan update occurred in 2007

Commercial Land Use Plan 2012

Mapping Update

- **Reflect changes in the Airports property limits and ownerships interests while reviewing & validating current land use areas and designations**
- **Addresses Commercial Real Estate Market Information**
- **Land Use District Refinements**
- **Thoroughfare Updates**
- **Airfield Strategies (Coordination with the Airfield and Cargo Master Plan)**
- **Passenger Rail / TOD**
- **Gas Leasehold Limits**
- **Parking Strategies**
- **Host City Coordination Meetings**
- **Airport Stakeholder Concurrence Meetings (Exec. Staff, CDCT, and Task Force)**

Commercial Land Use Plan 2012

Timeline

Mapping Workshops	Jan.-Feb. 2012
Grapevine – Host City Meeting	April 2, 2012
Eules – Host City Meeting	April 9, 2012
Coppell – Host City Meeting	April 13, 2012
Irving – Host City Meeting	April 30, 2012
Airport Stakeholder Final Meeting	May 14, 2012
Board Briefing and Presentation	June 7, 2012
Board Approval	July 12, 2012
Task Force Review	November 29, 2012
Owner City Briefings	Dec. 2012-Jan. 2013



Project Update

International Commerce Park

International Commerce Park



- **Started in 2001**
- **376 net leasable acres**
- **Total of 6,373,000 SF of building space at build-out**
- **Recently leased additional 63 acres**

Project Update

Sikorsky/CTI

A series of light blue, wavy lines that originate from the left side of the page and curve downwards and to the right, filling the bottom half of the slide. The lines vary in thickness and spacing, creating a dynamic, flowing background element.

Sikorski/CTI Facility



- Leased in May 2008
- Includes state-of-the-art “Whirl Tower”
- Lease premises 9.64 acres



Project Update

Southgate Plaza

Southgate Plaza Aerial Location Map



Southgate Plaza Development Components

- 32 acre development comprised of office, retail/restaurant and hospitality uses
 - Restaurant/Retail pad sites
 - 6 acres
 - Consolidated Headquarters complex and parking garage
 - 6.5 acres
 - Hyatt Place limited service hotel
 - 2.1 acres
 - USPS facility
 - 1.6 acres
 - Future Development
 - 10.7 acres for office, retail and hospitality uses (extended stay)



Anchor Facilities at Southgate Plaza





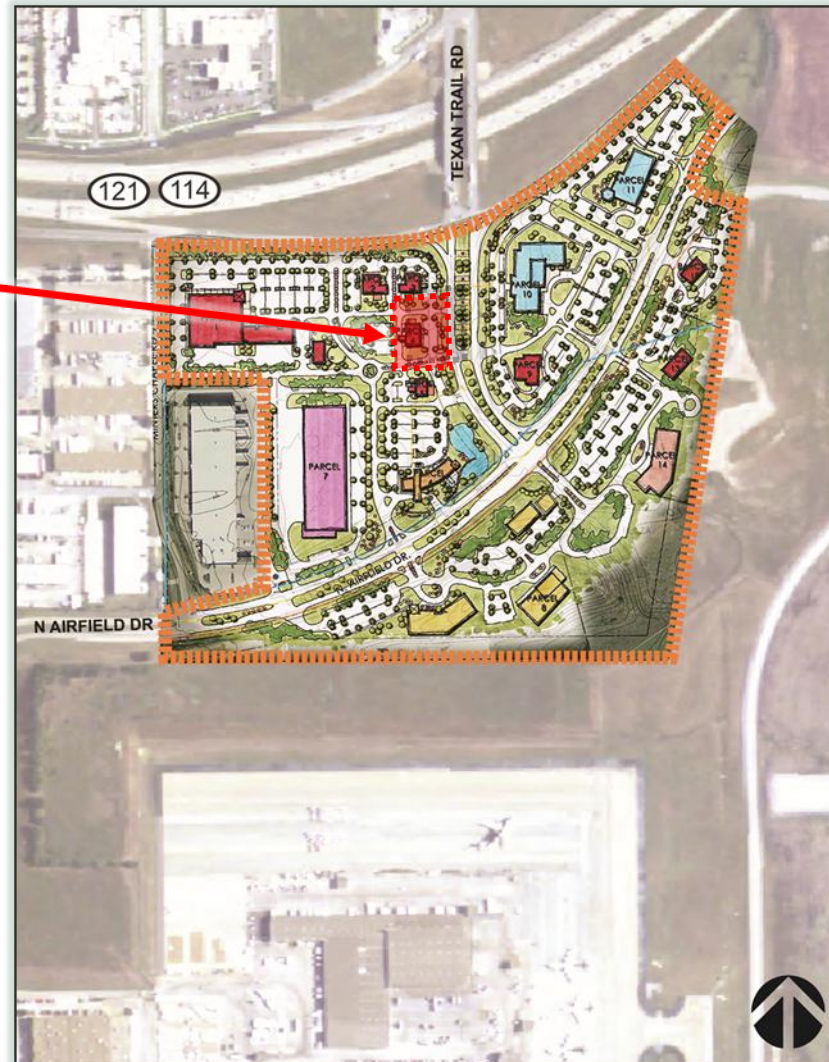
Project Update

Founders' Plaza

Founders' Plaza Phase 1

Airport Plazas Development

Approximately 3 acre site with Fuel Station, Convenience Store and Food Court, Car Wash, Light Auto Repair Shop and Banking Center



Founders' Plaza Conceptual Images





Project Update

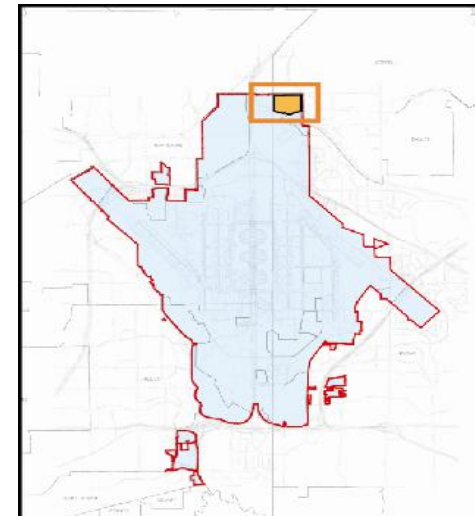
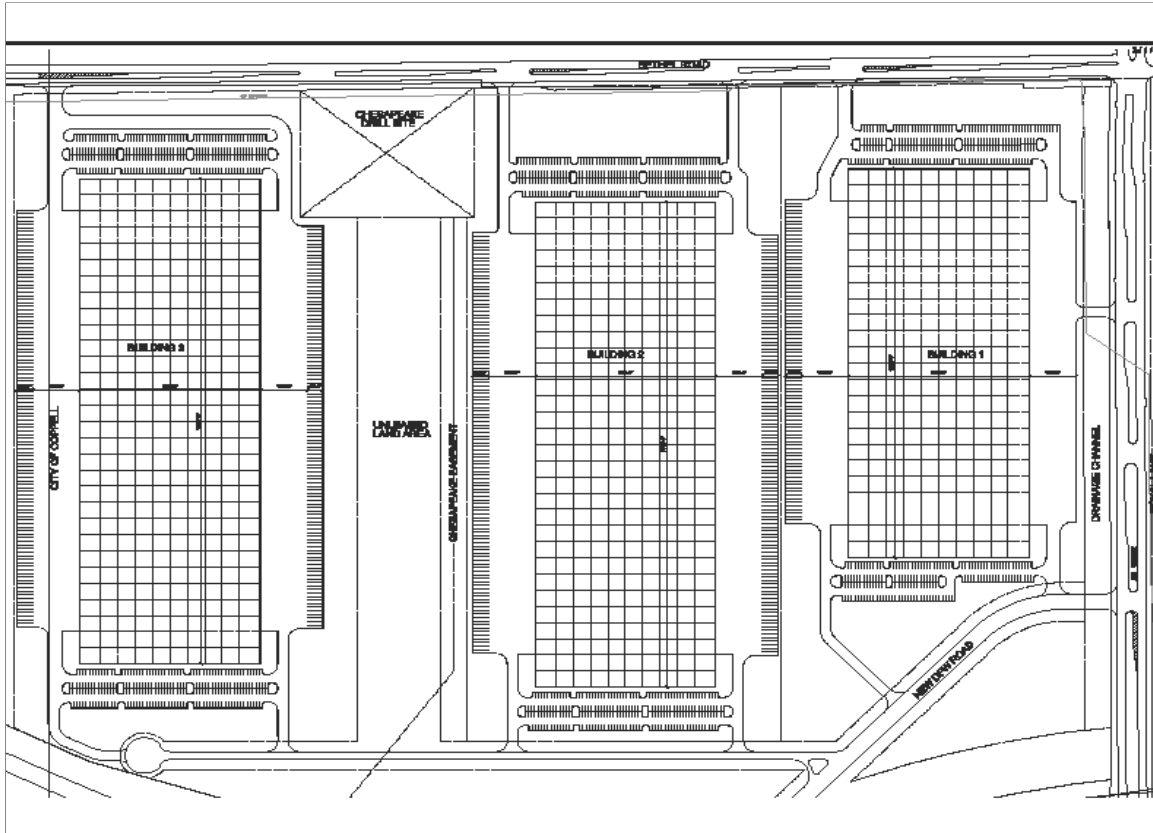
Coppell Industrial

Coppell Industrial

Proposed Development

- Concept plan for three industrial buildings
- Working with two developers (one Build-to-Suit and two spec buildings)
- Coppell agreed to a tax-sharing Inter-local Agreement (ILA), which was executed on September 11, 2012

Coppell Industrial Proposed Development





Dallas/Fort Worth International Airport Commercial Development Department

Dallas City Council Briefing
Commercial Development Land Use Plan 2012
January 16, 2013

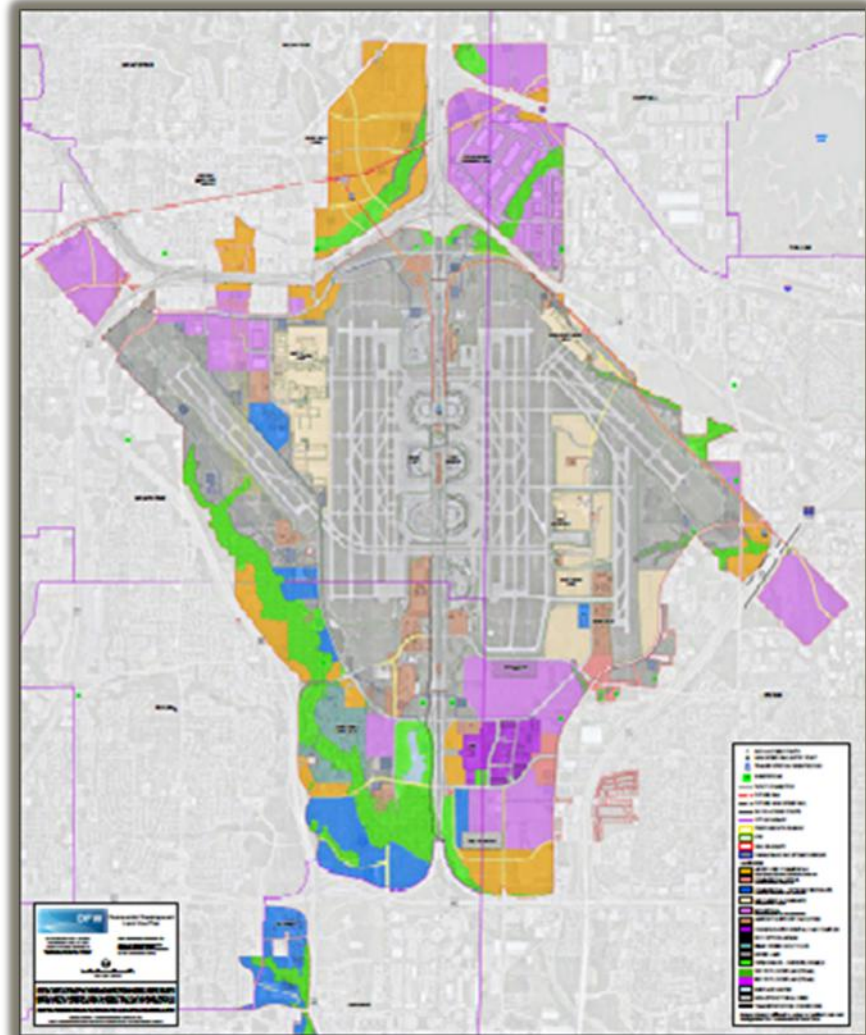
Land Use Plan Map

- SH114 ACCESS POINTS
- HIGH SPEED RAIL ENTRY POINT
- TOD** TRANSPORTATION ORIENTED DEV.
- SUBSTATIONS
- TxDOT CONNECTOR
- FUTURE RAIL
- FUTURE HIGH SPEED RAIL
- SH 161 ACCESS POINTS
- CITY BOUNDARY
- AOA
- DFW PROPERTY
- CHESAPEAKE PAD SITES/CORRIDOR

LANDUSE:

- MIXED USE COMMERCIAL
Retail, restaurant, office, hotel, entertainment, & related uses
- COMMERCIAL RETAIL
Local retail, restaurant, & related uses
- COMMERCIAL - OFFICE/CORPORATE
Campus style & low/mid-rise office & related uses
- AIR CARGO & HANGARS
Direct aviation uses & support
- INDUSTRIAL
Warehouse/distribution, flex office, light assembly
- AIRPORT SUPPORT FACILITIES
- CONSOLIDATED RENTAL CAR COMPLEX
- RCC OPTION AREAS
- BEAR CREEK GOLF CLUB
- NOISE LAND
- OPEN SPACE - UNDEVELOPABLE
- 100 YR FLOODPLAIN (FEMA)
- 500 YR FLOODPLAIN (FEMA)
- SURFACE WATER
- NON-STRUCTURAL USES
- TRANSPORTATION CORRIDORS

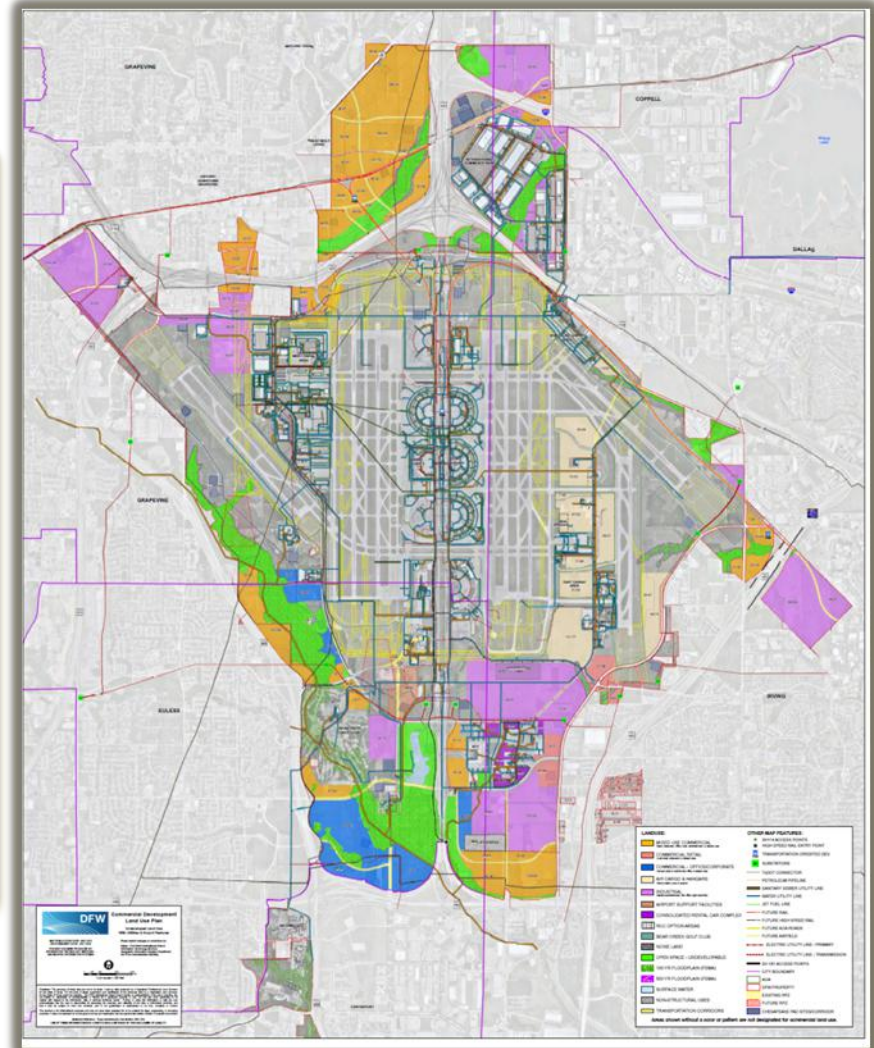
Areas shown without a color or pattern are not designated for commercial land use.



Undeveloped Land Use Map

LANDUSE:	OTHER MAP FEATURES:
MIXED USE COMMERCIAL <i>(Retail, restaurant, office, bank, entertainment, & recreation)</i>	SH114 ACCESS POINTS
COMMERCIAL RETAIL <i>(Retail, restaurant, office, bank, entertainment, & recreation)</i>	HIGH SPEED RAIL ENTRY POINT
COMMERCIAL - OFFICE/CORPORATE <i>(Corporate office & executive office & related use)</i>	TRANSPORTATION ORIENTED DEV.
AIR CARGO & HANGARS <i>(Direct air cargo use & support)</i>	SUBSTATIONS
INDUSTRIAL <i>(Manufacturing, distribution, non-office light assembly)</i>	TxDOT CONNECTOR
AIRPORT SUPPORT FACILITIES	PETROLEUM PIPELINE
CONSOLIDATED RENTAL CAR COMPLEX	SANITARY SEWER UTILITY LINE
RCC OPTION AREAS	WATER UTILITY LINE
BEAR CREEK GOLF CLUB	JET FUEL LINE
NOISE LAND	FUTURE RAIL
OPEN SPACE - UNDEVELOPABLE	FUTURE HIGH SPEED RAIL
100 YR FLOODPLAIN (FEMA)	FUTURE ADA ROADS
500 YR FLOODPLAIN (FEMA)	FUTURE AIRFIELD
SURFACE WATER	ELECTRIC UTILITY LINE - PRIMARY
NON-STRUCTURAL USES	ELECTRIC UTILITY LINE - TRANSMISSION
TRANSPORTATION CORRIDORS	SH 161 ACCESS POINTS
	CITY BOUNDARY
	ADA
	DFW PROPERTY
	EXISTING RPZ
	FUTURE RPZ
	CHESAPEAKE PAD SITES/CORRIDOR

Areas shown without a color or pattern are not designated for commercial land use.



Memorandum



CITY OF DALLAS

DATE January 11, 2013

TO The Honorable Mayor and Members of the City Council

SUBJECT Proposed 2012 Bond Program Project Implementation Schedule Briefing
January 16, 2013 Council Meeting

On Wednesday, January 16, 2013, the City Council will be briefed on the Proposed 2012 Bond Program Project Implementation Schedule. The briefing materials are attached for your review.

Please let me know if you have questions or need additional information.

A handwritten signature in cursive script, appearing to read 'Jill Jordan'.

Jill A. Jordan, P.E.
Assistant City Manager

Attachment

c: The Honorable Mayor and Members of the City Council
Mary K. Suhm, City Manager
Thomas P. Perkins, Jr., City Attorney
Rosa Rios, City Secretary
Craig Kinton, City Auditor
Honorable Daniel F. Solis, Administrative Judge
A.C. Gonzalez, First Assistant City Manager
Ryan S. Evans, Assistant City Manager
Forest E. Turner, Assistant City Manager
Joey Zapata, Assistant City Manager
Jeanne Chipperfield, Chief Financial Officer
Jack Ireland, Director, Financial Services
Edward Scott, Director, Controller's Office
Frank Libro, Public Information Officer
Stephanie Cooper, Assistant to the City Manager, Mayor and Council Office
Rick Galceran, P.E., Director, Public Works Department

Proposed 2012 Bond Program Project Implementation Schedule

**City Council Briefing
January 16, 2013**

Factors that Influence the Scheduling of the 2012 Bond Program Projects

- Ability to pay debt – debt capacity
- Matching commercial paper usage to debt and projects
- Managing projects in an efficient and effective manner

Financial Criteria for Issuing Bonds

- Primary factor in determining the schedule for implementation of the bond projects is financial capacity which assumes:
 - Conservative growth in the value of the ad valorem tax base
 - No change in the tax rate allocated to the debt service fund
- Beginning in FY 2010-11, a \$350m commercial paper program has been used to provide short-term financing and “just-in-time-borrowing” as projects are implemented
- Commercial paper is being used for 1998, 2006, and 2012 bond program projects
- Voter approved general obligation bonds will be issued each year to take-out or retire the commercial paper with permanent long-term financing

Managing Projects Efficiently & Effectively

- Protection of Property and lives are primary considerations for prioritizing projects
- Higher priority is given to projects with a higher technical ranking
- Economic Development projects that are “Now Ready” are priority scheduled - e.g. The Canyon project
- Partnering Entities with “Now Ready” projects are given priority schedule – e.g. Mt. Creek Parkway, Trails
- Projects are grouped to achieve Economies of Scale
- Projects are geographically distributed
- Projects requiring design prior to construction such as Alleys, Street Reconstruction, Complete Streets & Trails require more time, with the design lasting around 12 month and construction lasting 6 to 12 months

Overview of Implementation of Projects of Citywide Significance

- Houston St. Viaduct – Design FY 14, Construction FY 16
- West Dallas Gateway – Design FY 13-15, Construction FY 17
- Able Pump Station – Construction FY 14
- Mill Creek, Peaks Branch, State-Thomas – Flood Protection & Storm Drainage – Easement & other preparation FY13-14, Construction FY 15

Overview of Implementation of Economic Development Projects

- The Canyon – Colorado Blvd. Extension – Design & Phase I Construction - FY 13 \$1.5m & FY 14 \$2.5m; Phase II Construction FY 16 \$6m
- UNT Transit Oriented Development
 - FY13 \$750K, FY14 \$2m & FY16 \$2.25m
- Economic Development & Housing Demand Driven Projects
 - FY 13 \$4m, FY14 \$15.25m, FY15 \$7.5m & FY16 \$13.25m

Highlights for 2013 Drainage Projects

- Design of various Erosion Control projects – Flood Protection & Storm Drainage
- Design of Bahama Dr. Storm Drainage System - Flood Protection & Storm Drainage
- Construction of Mockingbird Ln. & McKamy Swale Storm Drainage Systems - Flood Protection & Storm Drainage

Highlights for 2013 Street Projects

- Design of Complete Streets - Lamar St., Greenville Ave., Jefferson Blvd., Davis St. & Grand Ave.
- Design of Alleys – All Alley Petition and Alley Reconstruction projects
- Design of Thoroughfare - Highland Rd.
- Design of all Street Petition & Target Neighborhood Street projects – includes Arizona Ave., McVey Ave., Gardenview Dr., Fernheath Ln., Gooch St., Hughes Ln., Holly Hill Dr.
- Resurfacing Major Streets – Includes Alpha Rd., Jefferson Blvd., Inwood Rd., Dumbarton St., Mockingbird Ln., & St. Augustine Rd.
- Construction of Sidewalks and Barrier Free Ramps – As demand dictates

2012 Bond Program Annual Project Awards by Category

Category	FY 2012-13	FY 2013-14	FY 2014-15	FY 2015-16	FY 2016-17	Total
Proposition 1: Street and Transportation Improvements						
Alley Petitions	291,450	-	1,651,550	-	-	1,943,000
Alley Reconstructions	3,327,165	-	18,853,935	-	-	22,181,100
Bridge Repair - Houston St Viaduct	-	1,220,000	-	10,980,000	-	12,200,000
Complete Streets	2,061,195	8,190,330	7,981,805	-	3,944,170	22,177,500
West Dallas Gateway	3,430,000	1,715,000	-	-	29,155,000	34,300,000
Intergovernmental Partnerships	700,000	7,833,200	6,701,000	1,714,300	-	16,948,500
Sidewalk Improvements	876,300	935,200	450,000	-	-	2,261,500
Street Petitions	1,120,785	-	5,643,320	-	707,795	7,471,900
Street Reconstruction - Local	-	3,697,095	-	20,950,205	-	24,647,300
Street Reconstruction - Thoroughfare	-	2,736,570	-	15,507,230	-	18,243,800
Street Resurfacing	12,298,900	11,283,800	9,398,130	13,920,100	15,306,270	62,207,200
Target Neighborhoods	1,543,770	-	8,748,030	-	-	10,291,800
Thoroughfares	183,675	-	298,170	1,040,825	1,689,630	3,212,300
Trails	962,760	2,418,105	5,455,640	13,702,595	-	22,539,100
Proposition 1 Totals	\$ 26,796,000	\$ 40,029,300	\$ 65,181,580	\$ 77,815,255	\$ 50,802,865	\$ 260,625,000
Proposition 2: Flood Protection & Storm Drainage						
Erosion Control	46,275	262,225	-	1,736,955	9,842,745	11,888,200
Flood & Storm Drainage	3,696,350	91,700,000	219,090,450	-	-	314,486,800
Proposition 2 Totals	\$ 3,742,625	\$ 91,962,225	\$ 219,090,450	\$ 1,736,955	\$ 9,842,745	\$ 326,375,000
Proposition 3: Economic Development & Housing						
The Canyon – Colorado Blvd. Extension	1,500,000	2,500,000	-	6,000,000	-	10,000,000
Eco Development, Housing and UNT Transit Oriented Development	4,750,000	17,250,000	7,500,000	15,500,000	-	45,000,000
Proposition 3 Totals	\$ 6,250,000	\$ 19,750,000	\$ 7,500,000	\$ 21,500,000	-	\$ 55,000,000
TOTAL	\$ 36,788,625	\$ 151,741,525	\$ 291,772,030	\$ 101,052,210	\$ 60,645,610	\$ 642,000,000

2012 Bond Program - Next Steps

- Award first year group of engineering design projects in Summer 2013
- Award first year street resurfacing in May and sidewalk projects as demand dictates

Appendix A

Implementation Schedule
2012 Bond Program Projects
by Proposition and by Year

Appendix B

Implementation Schedule
2012 Bond Program Projects
by Council District and by Year

2012 Bond Program - Sales Schedules

<i>Proposition</i>	<i>Category</i>	<i>Location</i>	<i>CD</i>	<i>Total</i>	<i>FY2013</i>	<i>FY2014</i>	<i>FY2015</i>	<i>FY2016</i>	<i>FY2017</i>
Economic Development and Housing									
<i>Economic Development and Housing</i>									
		Canyon Boulevard		\$10,000,000	\$1,500,000	\$2,500,000		\$6,000,000	
		Economic Development Demand Driven Projects		\$20,000,000		\$9,250,000	\$4,500,000	\$6,250,000	
		Housing Demand Driven Projects		\$20,000,000	\$4,000,000	\$6,000,000	\$3,000,000	\$7,000,000	
		UNT Transit Oriented Development		\$5,000,000	\$750,000	\$2,000,000		\$2,250,000	
		<i>Summary for 'Category' = Economic Development and Housing (4 detail records)</i>							
		Sum		\$55,000,000	\$6,250,000	\$19,750,000	\$7,500,000	\$21,500,000	
		<i>Summary for 'Proposition' = Economic Development and Housing (4 detail records)</i>							
		Sum		\$55,000,000	\$6,250,000	\$19,750,000	\$7,500,000	\$21,500,000	

<i>Proposition</i>	<i>Category</i>	<i>Location</i>	<i>CD</i>	<i>Total</i>	<i>FY2013</i>	<i>FY2014</i>	<i>FY2015</i>	<i>FY2016</i>	<i>FY2017</i>
Flood Protection and Storm Drainage									
<i>Erosion Control</i>									
		Abrams Road Bridge - hike & bike trail	10	\$48,000			\$7,200	\$40,800	
		Anderson Bonner Park Site 1 - hike & bike trail (WRC 164)	11	\$231,400			\$34,710	\$196,690	
		Audelia 11601 (Audelia Branch - E. Bank downstream of Audelia Bridge)	10	\$617,700			\$92,655	\$525,045	
		Bainbridge 2733	8	\$91,400			\$13,710	\$77,690	
		Beechmont Dr. 2507	9	\$54,800			\$8,220	\$46,580	
		Blackstone 2709	8	\$114,300			\$17,145	\$97,155	
		Blackstone 2729	8	\$91,400			\$13,710	\$77,690	
		Blackstone 2745	8	\$220,500			\$33,075	\$187,425	
		Blue Ridge 3721	3	\$123,500			\$18,525	\$104,975	
		Burninglog 13156	11	\$68,600			\$10,290	\$58,310	
		Caracas 5410 and 5416	5	\$171,400			\$25,710	\$145,690	
		Cavender 445	4	\$73,100			\$10,965	\$62,135	
		Cedar Springs 5910	2	\$185,100			\$27,765	\$157,335	
		Church Road 9233	10	\$160,000			\$24,000	\$136,000	
		Clarendon 3435	1	\$111,200			\$16,680	\$94,520	
		Clubhouse Circle 6523 and 6527	11	\$114,300			\$17,145	\$97,155	
		Colorado (W) 705	3	\$77,700			\$11,655	\$66,045	
		Country Brook Pond between Park Grove Ln and Quail Hollow Rd	12	\$40,000			\$6,000	\$34,000	
		Deep Hill Circle 2671, 2675, 2679, 2683	3	\$553,500			\$83,025	\$470,475	
		Dixon Branch at Easton Road	9	\$182,800			\$27,420	\$155,380	
		Fair Oaks Crossing 8201	10	\$114,300			\$17,145	\$97,155	

<i>Proposition</i>	<i>Category</i>	<i>Location</i>	<i>CD</i>	<i>Total</i>	<i>FY2013</i>	<i>FY2014</i>	<i>FY2015</i>	<i>FY2016</i>	<i>FY2017</i>
Flood Protection and Storm Drainage									
<i>Erosion Control</i>									
		Fair Oaks Crossing 8849	10	\$285,600			\$42,840	\$242,760	
		Five Mile Pkwy W. 922	4	\$222,400			\$33,360	\$189,040	
		Glen Oaks 816	4	\$137,100			\$20,565	\$116,535	
		Glendale Park Site 1 - Pavilion	5	\$68,600			\$10,290	\$58,310	
		Glendale Park Site 3 - S. of footbridge	5	\$34,300			\$5,145	\$29,155	
		Glendale Park Site 4 - N. of footbridge	5	\$34,300			\$5,145	\$29,155	
		Green Oaks Circle 9032	10	\$137,100			\$20,565	\$116,535	
		Greenville Avenue 9320/Vista View 8915	10	\$197,700			\$29,655	\$168,045	
		Hampton Road (S) 3817	3	\$228,500			\$34,275	\$194,225	
		Harry Moss Park Site 1 - S. of pedestrian bridge	10	\$68,600			\$10,290	\$58,310	
		Healey 2116 and Kingsman 9869	9	\$137,100			\$20,565	\$116,535	
		Kalani 6323	11	\$79,100			\$11,865	\$67,235	
		Kiesthill Drive 3431	3	\$222,400			\$33,360	\$189,040	
		Kildare 4927	5	\$85,700			\$12,855	\$72,845	
		Kiltartan 1511	9	\$177,900			\$26,685	\$151,215	
		Kiowa Parkway Hike and Bike Trail	11	\$82,300			\$12,345	\$69,955	
		Lanett Circle N. 10741	10	\$142,800			\$21,420	\$121,380	
		Langdale Circle 8668 and 8656	10	\$285,600			\$42,840	\$242,760	
		Lyre Lane 6909 and Chantilly Court 6916	9	\$68,600			\$10,290	\$58,310	
		Martin Weiss Park Site 1 - Pavilion	1	\$68,600			\$10,290	\$58,310	
		Martin Weiss Park Site 3 - Pedestrian Bridge	1	\$34,900			\$5,235	\$29,665	
		Mercedes 6607, 6615, 6621	9	\$114,300			\$17,145	\$97,155	

<i>Proposition</i>	<i>Category</i>	<i>Location</i>	<i>CD</i>	<i>Total</i>	<i>FY2013</i>	<i>FY2014</i>	<i>FY2015</i>	<i>FY2016</i>	<i>FY2017</i>
Flood Protection and Storm Drainage									
<i>Erosion Control</i>									
		Pagewood 10553	11	\$29,700				\$4,455	\$25,245
		Rocky Branch @ Middle Downs Sites 1, 2, 3, 4	10	\$666,300				\$99,945	\$566,355
		Rosemont Rd. 7322	5	\$114,300				\$17,145	\$97,155
		Royal Lane 7832 and 7920	11	\$493,600				\$74,040	\$419,560
		Royal Lane 9750 (Jackson Branch - E. Bank downstream of Royal Bridge)	10	\$259,400				\$38,910	\$220,490
		Skillman 7920 (Jackson Branch - E. Bank downstream of Skillman Br)	10	\$518,900				\$77,835	\$441,065
		Skillman 8109	10	\$163,400				\$24,510	\$138,890
		Sperry St. 3220	9	\$84,000				\$12,600	\$71,400
		Spring Grove 13316	11	\$74,000				\$11,100	\$62,900
		Spring Valley 8444	11	\$297,100				\$44,565	\$252,535
		Springwater 9204, 9210, 9216	9	\$297,100				\$44,565	\$252,535
		Squaw Valley 17628	12	\$91,400				\$13,710	\$77,690
		Summer Creek Circle 6121, 6123, 6125, 6127, 6139, 6141	9	\$434,200				\$65,130	\$369,070
		Sunland Street 11825	9	\$45,700				\$6,855	\$38,845
		Tamarack 1745, 1739, 1751	9	\$308,500	\$46,275	\$262,225			
		Tranquilla Dr. 1251	9	\$109,700				\$16,455	\$93,245
		Turtle Creek Greenbelt Site 1 - bike trail	14	\$222,800				\$33,420	\$189,380
		Twin Creek 9726	9	\$123,500				\$18,525	\$104,975
		Twin Falls Park Trail	5	\$257,100				\$38,565	\$218,535
		Whitehurst 9727 (Jackson Branch - E. Bank upstream of Whitehurst Br)	10	\$345,900				\$51,885	\$294,015

<i>Proposition</i>	<i>Category</i>	<i>Location</i>	<i>CD</i>	<i>Total</i>	<i>FY2013</i>	<i>FY2014</i>	<i>FY2015</i>	<i>FY2016</i>	<i>FY2017</i>
Flood Protection and Storm Drainage									
<i>Erosion Control</i>									
		Whitehurst 9730 (Audelia Branch - W. Bank downstream of Whitehurst)	10	\$444,800				\$66,720	\$378,080
		Wild Oak 2488	7	\$148,300				\$22,245	\$126,055
		<i>Summary for 'Category' = Erosion Control (65 detail records)</i>							
		Sum		\$11,888,200	\$46,275	\$262,225		\$1,736,955	\$9,842,745
<i>Flood and Storm Drainage</i>									
		Bahama Drive Relief System	3	\$577,000	\$86,550			\$490,450	
		Levee Drainage System - Sump A (Able Pump Station)		\$91,700,000		\$91,700,000			
		McKamy Swale from Mapleshade Ln to Villa Rd	12	\$1,309,800	\$1,309,800				
		Mill Creek, Peaks Branch and State Thomas		\$218,600,000				\$218,600,000	
		Mockingbird Ln from Maple Ave to Forest Park Blvd	2	\$2,300,000	\$2,300,000				
		<i>Summary for 'Category' = Flood and Storm Drainage (5 detail records)</i>							
		Sum		\$314,486,800	\$3,696,350	\$91,700,000	\$219,090,450		
		<i>Summary for 'Proposition' = Flood Protection and Storm Drainage (70 detail records)</i>							
		Sum		\$326,375,000	\$3,742,625	\$91,962,225	\$219,090,450	\$1,736,955	\$9,842,745

<i>Proposition</i>	<i>Category</i>	<i>Location</i>	<i>CD</i>	<i>Total</i>	<i>FY2013</i>	<i>FY2014</i>	<i>FY2015</i>	<i>FY2016</i>	<i>FY2017</i>
Street and Transportation									
<i>Alley Petition</i>									
		Alley between Bishop Avenue and Haines Avenue from Neches Street to Wickford Street	1	\$171,400	\$25,710		\$145,690		
		Alley between Hibernia Street and McKinney Avenue from Routh Street to Boll Street	14	\$94,300	\$14,145		\$80,155		
		Alley between Hibernia Street and State Street from Boll Street to Worthington Street	14	\$91,800	\$13,770		\$78,030		
		Alley between Hurley Way and Lenel Place from Williamsburg Road to "T" alley south of Walnut Hill Lane	13	\$202,000	\$30,300		\$171,700		
		Alley between Idaho Ave and Maryland Ave from Holden Ave an estimated 250' south to Dallas Power & Light property	4	\$85,700	\$12,855		\$72,845		
		Alley between Manana Drive and Park Lane from Larga Drive to Marsh Lane	6	\$391,800	\$58,770		\$333,030		
		Alley between Mt. Nebo Street and Mt. Shasta Street from Mt. Royal Street to Mt. Ranier Street	1	\$251,000	\$37,650		\$213,350		
		Alley between State Street and Thomas Avenue from Routh Street to Boll Street	14	\$91,800	\$13,770		\$78,030		
		Alley southwest and parallel to Shoreview Road from Forest Trail to Nimrod Trail	10	\$189,800	\$28,470		\$161,330		
		Bluffman Drive, Castle Hills Drive & Lovingood Dr. - Lovingood Dr. - Loud Dr.	8	\$226,500	\$33,975		\$192,525		
		Capps Dr & Rexford Dr from. Lemmon Ave parallel to Glencrest Ln	14	\$146,900	\$22,035		\$124,865		
		<i>Summary for 'Category' = Alley Petition (11 detail records)</i>							
		Sum		\$1,943,000	\$291,450		\$1,651,550		
<i>Alley Reconstruction</i>									
		Aldwick Dr (8805-9031) And Fenchurch Rd (8904-9020) A8409	10	\$218,000	\$32,700		\$185,300		
		Allencrest Ln (4608-4732) And Forest Ln (4609-4719) A5246	13	\$209,400	\$31,410		\$177,990		

<i>Proposition</i>	<i>Category</i>	<i>Location</i>	<i>CD</i>	<i>Total</i>	<i>FY2013</i>	<i>FY2014</i>	<i>FY2015</i>	<i>FY2016</i>	<i>FY2017</i>
Street and Transportation									
<i>Alley Reconstruction</i>									
		Allencrest Ln (4807-4931) And Nashwood Ln (4808-4918) A5244	13	\$274,000	\$41,100		\$232,900		
		Alto Caro Dr (7305-7447) And Clearhaven Dr (7306-7446) A9167	12	\$260,200	\$39,030		\$221,170		
		Amberwood Rd (16101-16239) And Wickerwood Dr (6401-6535) A9726	12	\$347,000	\$52,050		\$294,950		
		Arapaho Rd (7630-7630) And El Padre (7707-7707) A9260	12	\$188,800	\$28,320		\$160,480		
		Azalea Ln (6121-6339) And Royalton Dr (6142-6342) A8946	11	\$253,900	\$38,085		\$215,815		
		Azalea Ln (7107-7239) And Currin Dr (7106-7238) A8773	11	\$258,700	\$38,805		\$219,895		
		Baxtershire Dr (7110-7250) And Eudora Dr (7109-7239) A8730	11	\$273,400	\$41,010		\$232,390		
		Beauty Ln (10804-11030) And Royal Ln (3461-3461) A5447	13	\$317,200	\$47,580		\$269,620		
		Blue Mesa Dr (6834-6922) And Hillcrest Rd (17702-17726) A10597	12	\$182,300	\$27,345		\$154,955		
		Boca Bay Dr (4109-4263) And Shady Bend Dr (4110-4264) A5528	13	\$376,600	\$56,490		\$320,110		
		Brookview Dr (4400-4538) And Gloster Rd (4407-4533) A3086	13	\$295,500	\$44,325		\$251,175		
		Buxhill Dr (9405-9735) And Lanshire Dr (9408-9636) A8389	10	\$310,400	\$46,560		\$263,840		
		Buxhill Dr (9406-9734) And Shady Dale Ln (9607-9735) A8390	10	\$244,500	\$36,675		\$207,825		
		Caruth Blvd (7403-7543) And Colgate Ave (7402-7542) A3880	13	\$241,000	\$36,150		\$204,850		
		Catamore Ln (3117-3185) And Flowerdale Ln (3112-3162) A11081	13	\$195,800	\$29,370		\$166,430		
		Caulfield Dr (6701-6805) And Spanky Branch Ct (6904-7000) A9551	12	\$203,500	\$30,525		\$172,975		

<i>Proposition</i>	<i>Category</i>	<i>Location</i>	<i>CD</i>	<i>Total</i>	<i>FY2013</i>	<i>FY2014</i>	<i>FY2015</i>	<i>FY2016</i>	<i>FY2017</i>
--------------------	-----------------	-----------------	-----------	--------------	---------------	---------------	---------------	---------------	---------------

Street and Transportation

Alley Reconstruction

		Cedar Bend Dr (12317-12417) A5499	13	\$191,900	\$28,785		\$163,115		
		Cedarbrush Dr (3809-3951) And Goodfellow Dr (3810-3948) A5588	13	\$305,800	\$45,870		\$259,930		
		Chapel Downs Dr (3108-3256) And Timberview Rd (3111-3253) A5691	13	\$349,000	\$52,350		\$296,650		
		Chattington Dr (7403-7439) And Meandering Pl (15105-15115) A9290	12	\$180,300	\$27,045		\$153,255		
		Chattington Dr (7507-7625) And Woodstone Ln (7524-7624) A9309	12	\$185,300	\$27,795		\$157,505		
		Chesterton Dr (10206-10432) And Walnut Hill Ln (10201-10201) A8448	10	\$302,100	\$45,315		\$256,785		
		Chiswell Rd (9707-9747) And Lanshire Dr (9718-9738) A8384	10	\$85,700	\$12,855		\$72,845		
		Churchill Way (6824-6838) And Hillcrest Rd (12361-12361) A8884	11	\$90,700	\$13,605		\$77,095		
		Claren Ct (7114-7122) And Judi Ct (7104-7112) A10634	12	\$162,500	\$24,375		\$138,125		
		Clearhaven Dr (7206-7246) And Alto Caro Dr (7249-7279) A9160	12	\$125,100	\$18,765		\$106,335		
		Coach Light Rd (7204-7260) And Pecan Ridge Dr (7322-7346) A6160	8	\$316,100	\$47,415		\$268,685		
		Coral Gables Dr (3608-3660) And Pallos Verdas Dr (3627-3675) A5411	13	\$186,000	\$27,900		\$158,100		
		Country Brook Dr (4204-4328) A10502	12	\$270,300	\$40,545		\$229,755		
		Crest Brook Dr (11311-11439) And Parkchester Dr (11402-11468) A8905	11	\$343,700	\$51,555		\$292,145		
		Cromwell Dr (12112-12132) And High Mesa Dr (3404-3416) A5324	13	\$81,700	\$12,255		\$69,445		
		Daybreak Dr (2303-2715) And Harbinger Ln (2304- 2612) A10351	12	\$429,800	\$64,470		\$365,330		

<i>Proposition</i>	<i>Category</i>	<i>Location</i>	<i>CD</i>	<i>Total</i>	<i>FY2013</i>	<i>FY2014</i>	<i>FY2015</i>	<i>FY2016</i>	<i>FY2017</i>
Street and Transportation									
<i>Alley Reconstruction</i>									
		Deep Valley Dr (3920-3980) And Clear Cove Ln (3911-3951) A5561	13	\$318,700	\$47,805		\$270,895		
		Del Roy Dr (5209-5439) And Preston Haven Dr (5208-5438) A8974	13	\$296,400	\$44,460		\$251,940		
		Delmeta Dr (6811-6957) And Quarterway Dr (6810-6950) A9242	11	\$296,800	\$44,520		\$252,280		
		Duffield Dr (6321-6415) And Earthwind Dr (17134-17222) A9589	12	\$136,500	\$20,475		\$116,025		
		Earthwind Dr (17101-17409) And Campbell Rd (6001-6101) A9582	12	\$508,200	\$76,230		\$431,970		
		El Padre Ln (7707-7747) And El Santo Ln (7706-7746) A9257	12	\$156,400	\$23,460		\$132,940		
		Estate Ln (10111-10171) And Caribou Trl (9909-9949) A8686	10	\$165,400	\$24,810		\$140,590		
		Fallmeadow Ln (7612-7668) And Meandering Way (14800-14800) A9273	12	\$220,400	\$33,060		\$187,340		
		Fox Hill Ln (5949-5977) and W. Red Bird (1007-1031) A6358	4	\$115,600	\$17,340		\$98,260		
		Gray Wolf Trl (6203-6251) And Bentwood Trl (6211-6247) A10666	12	\$169,600	\$25,440		\$144,160		
		Harbinger Ln (2303-2423) And Kingsridge Dr (2308-2424) A10354	12	\$215,100	\$32,265		\$182,835		
		Harbinger Ln (2503-2623) And Kingsridge Dr (2504-2624) A10349	12	\$214,700	\$32,205		\$182,495		
		Hillcrest Rd (17726-17820) And Blue Mesa Dr (6926-6930) A10597	12	\$129,500	\$19,425		\$110,075		
		Hillcrest Rd (17920-18014) And Bremerton Dr (7003-7011) A10597	12	\$133,000	\$19,950		\$113,050		
		Hillfawn Cir (7905-7947) And Woodstone Ln (7938-7992) A9246	12	\$135,200	\$20,280		\$114,920		
		Hilton Head Dr (5211-5315) And River Hill Cir (4708-4724) A10672	12	\$159,900	\$23,985		\$135,915		

<i>Proposition</i>	<i>Category</i>	<i>Location</i>	<i>CD</i>	<i>Total</i>	<i>FY2013</i>	<i>FY2014</i>	<i>FY2015</i>	<i>FY2016</i>	<i>FY2017</i>
Street and Transportation									
<i>Alley Reconstruction</i>									
		Hilton Head Dr (5310-5420) And Harbor Town Dr (5305-5323) A18125	12	\$181,200	\$27,180		\$154,020		
		Indian Springs Rd (7609-7679) And Tophill Ln (7614-7652) A9319	12	\$177,000	\$26,550		\$150,450		
		Ivywood Dr (807-955) And Havenwood Dr (806-948) A6501	8	\$263,700	\$39,555		\$224,145		
		Kingsridge Dr (2307-2627) And Silverthorne Dr (2304-2516) A10345	12	\$421,900	\$63,285		\$358,615		
		Kirnwood Dr (306-426) And Ryanridge Dr (7729-7769) A6542	8	\$157,700	\$23,655		\$134,045		
		Knollview Dr (14810-14856) And Tophill Cir (7105-7115) A9244	11	\$143,500	\$21,525		\$121,975		
		La Avenida Dr (7505-7607) And Meandering Way A9187	12	\$183,800	\$27,570		\$156,230		
		La Avenida Dr (7607-7747) And La Bolsa Dr (7616-7748) A9186	12	\$322,500	\$48,375		\$274,125		
		La Cabeza (7707-7765) And Scotia (7702-7718) A9118	12	\$176,800	\$26,520		\$150,280		
		La Cosa Dr (7604-7760) And Chalkstone Dr (7605-7747) A9262	12	\$423,900	\$63,585		\$360,315		
		La Cosa Dr (7705-7761) And El Padre Ln (7706-7746) A9258	12	\$156,000	\$23,400		\$132,600		
		La Cosa Dr (7804-7960) And Fallmeadow Ln (7931-7997) A9265	12	\$296,800	\$44,520		\$252,280		
		La Manga Dr (7707-7765) And La Cabeza Dr (7708-7764) A9119	12	\$178,500	\$26,775		\$151,725		
		Lacehaven Dr (14907-14957) And Knollview Dr (14908-14944) A9299	12	\$249,500	\$37,425		\$212,075		
		Lafayette Way (6207-6263) And Prestoncrest Ln (6206-6262) A8878	11	\$183,800	\$27,570		\$156,230		
		Lakemere Dr (9807-9951) And Crestwick Dr (9806-9940) A8318	10	\$304,500	\$45,675		\$258,825		

<i>Proposition</i>	<i>Category</i>	<i>Location</i>	<i>CD</i>	<i>Total</i>	<i>FY2013</i>	<i>FY2014</i>	<i>FY2015</i>	<i>FY2016</i>	<i>FY2017</i>
Street and Transportation									
<i>Alley Reconstruction</i>									
		Lavendale Ave (6111-6339) And Azalea Ln (6118-6338) A8948	11	\$292,400	\$43,860		\$248,540		
		Lavendale Ave (6120-6338) And Royal Ln (6121-6339) A8951	11	\$265,900	\$39,885		\$226,015		
		Lavendale Ave (6404-6474) And Royal Ln (6405-6475) A8967	11	\$229,200	\$34,380		\$194,820		
		Lavendale Ave (6405-6441) And Royalton Dr (6456-6480) A8952	11	\$156,900	\$23,535		\$133,365		
		Lavendale Ave (6908-7048) And Royal Ln (6907-7047) A8781	11	\$295,300	\$44,295		\$251,005		
		Leameadow Dr (7008-7028) And Knollview Dr (14944-14956) A9298	12	\$149,800	\$22,470		\$127,330		
		Lennox Ln (10545-10615) And Isabella Ln (4611-4611) A3111	13	\$134,300	\$20,145		\$114,155		
		Marbrook Dr (12109-12323) And Madeleine Cir (12104-12136) A8887	11	\$290,300	\$43,545		\$246,755		
		Meadow Bluff Ln (2703-2755) And W Camp Wisdom Rd (2400-2400) A6157	8	\$154,900	\$23,235		\$131,665		
		Meadow Dawn Ln (2705-2759) And Meadow Bluff Ln (2706-2756) A6158	8	\$154,200	\$23,130		\$131,070		
		Meadow Dawn Ln (2706-2760) And Meadow Harvest Ln (2705-2759) A6154	8	\$166,300	\$24,945		\$141,355		
		Meadow Gate Ln (2703-2763) And Meadow Isle Ln (2704-2764) A6161	8	\$195,000	\$29,250		\$165,750		
		Meadow Harvest Ln (2706-2760) And Meadow Isle Ln (2709-2763) A6155	8	\$165,600	\$24,840		\$140,760		
		Meadow Stone Ln (2705-2759) And Meadow Gate Ln (2710-2762) A6156	8	\$162,800	\$24,420		\$138,380		
		Midbury Dr (7806-7848) And Northaven Rd (7807-7847) A8756	11	\$129,000	\$19,350		\$109,650		
		Misty Meadow Dr (3403-3523) And Meadowchase Way (17903-17923) A11583	12	\$230,100	\$34,515		\$195,585		

<i>Proposition</i>	<i>Category</i>	<i>Location</i>	<i>CD</i>	<i>Total</i>	<i>FY2013</i>	<i>FY2014</i>	<i>FY2015</i>	<i>FY2016</i>	<i>FY2017</i>
Street and Transportation									
<i>Alley Reconstruction</i>									
		Overwood Rd (9406-9536) And Parkford Dr (9407-9529) A8357	10	\$241,400	\$36,210		\$205,190		
		Park Grove Ln (18627-18851) And Kirkmeadow Ln (4007-4131) A10466	12	\$302,500	\$45,375		\$257,125		
		Parkford Dr (9819-9963) And Ridgehaven Dr (9806-9950) A8324	10	\$308,400	\$46,260		\$262,140		
		Racine Dr (6507-6711) And Autumn Woods Trl (6506-6658) A6456	5	\$416,900	\$62,535		\$354,365		
		Roundrock Rd (7707-7823) And Briaridge Rd (7708-7820) A9272	12	\$182,000	\$27,300		\$154,700		
		Rustic Valley Dr (7238-7420) And Echo Bluff Dr (7104-7132) A9142	12	\$409,600	\$61,440		\$348,160		
		Seedling Ln (2304-2524) And Old Mill Rd (2311-2519) A10364	12	\$353,100	\$52,965		\$300,135		
		Shoreview Rd (9222-9246) And Deer Trail Dr (8044-8044) A11633	10	\$71,200	\$10,680		\$60,520		
		Shoreview Rd (9506-9748) And Audelia Rd (8725-8725) A8400	10	\$368,900	\$55,335		\$313,565		
		Spring Creek Rd (14906-15022) And Hillfawn Cir (7906-7916) A9248	12	\$147,600	\$22,140		\$125,460		
		Spring Creek Rd (15408-15432) And Fallmeadow Ln (7927-7931) A9266	12	\$86,500	\$12,975		\$73,525		
		Timber Creek Ln (6001-6037) And Gentle Knoll Ln (6002-6030) A9601	12	\$153,600	\$23,040		\$130,560		
		Tophill Ln (7405-7449) And Lynworth Dr (7408-7444) A9302	12	\$165,800	\$24,870		\$140,930		
		Townsley Ct (17203-17215) A9648	12	\$108,000	\$16,200		\$91,800		
		Tree Shadow Trl (5902-5942) And Flintshire Ct (5901-5923) A10769	12	\$244,900	\$36,735		\$208,165		
		<i>Summary for 'Category' = Alley Reconstruction (97 detail records)</i>							
		Sum		\$22,181,100	\$3,327,165		\$18,853,935		

<i>Proposition</i>	<i>Category</i>	<i>Location</i>	<i>CD</i>	<i>Total</i>	<i>FY2013</i>	<i>FY2014</i>	<i>FY2015</i>	<i>FY2016</i>	<i>FY2017</i>
Street and Transportation									
<i>Bridge Repair and Modification</i>									
		Houston Street Viaduct		\$12,200,000		\$1,220,000		\$10,980,000	
		<i>Summary for 'Category' = Bridge Repair and Modification (1 detail record)</i>							
		Sum		\$12,200,000		\$1,220,000		\$10,980,000	
<i>Complete Street</i>									
		Bishop from Jefferson to 8th	1	\$3,061,300		\$3,061,300			
		Cedar Springs Ave from Douglas to Oak Lawn	14	\$1,154,100			\$173,115		\$980,985
		Cedar Springs Ave from Douglas to Oak Lawn	2	\$150,000			\$22,500		\$127,500
		Davis Street from Beckley to Hampton	1	\$979,600	\$146,940		\$832,660		
		Grand from R.B. Cullum to Good Latimer	7	\$2,449,000	\$367,350		\$2,081,650		
		Greenville Ave Retail Areas	14	\$820,400			\$123,060		\$697,340
		Greenville from Belmont to Bell and from Alta to Ross	14	\$3,673,500	\$551,025		\$3,122,475		
		Henderson St from US 75 to Ross Ave	2	\$1,312,100			\$196,815		\$1,115,285
		Jefferson Blvd from Crawford to Van Buren	1	\$1,469,400	\$220,410		\$1,248,990		
		Knox from Katy Trail to US 75	14	\$734,700			\$110,205		\$624,495
		Lamar (S) from IH 45 to Hatcher	7	\$4,898,000	\$734,700	\$4,163,300			
		Main St from Good Latimer to Exposition	2	\$734,700		\$734,700			
		Meadowcreek Drive Arapaho to Campbell - pedestrian and traffic calming improvements	12	\$271,800	\$40,770	\$231,030			
		MLK from R.B. Cullum to S.M. Wright	7	\$468,900			\$70,335		\$398,565
		<i>Summary for 'Category' = Complete Street (14 detail records)</i>							
		Sum		\$22,177,500	\$2,061,195	\$8,190,330	\$7,981,805		\$3,944,170
<i>Gateway</i>									
		West Dallas Gateway		\$34,300,000	\$3,430,000	\$1,715,000			\$29,155,000

<i>Proposition</i>	<i>Category</i>	<i>Location</i>	<i>CD</i>	<i>Total</i>	<i>FY2013</i>	<i>FY2014</i>	<i>FY2015</i>	<i>FY2016</i>	<i>FY2017</i>
Street and Transportation									
<i>Gateway</i>									
<i>Summary for 'Category' = Gateway (1 detail record)</i>									
	Sum			\$34,300,000	\$3,430,000	\$1,715,000			\$29,155,000
<i>Intergovernmental Partnership</i>									
	Denton Drive Phase 1 (Walnut Hill to Royal)	6	\$5,992,300		\$5,992,300				
	Keller Springs / Preston / Westgrove	12	\$306,100		\$306,100				
	LBJ at Skillman Interchange	10	\$1,714,300					\$1,714,300	
	Mountain Creek Parkway from 2400' southeast of Eagle Ford to Clark Road	3	\$6,701,000				\$6,701,000		
	SOPAC Trail Phase 3 (East Dallas Veloway)	9	\$2,081,700	\$700,000	\$1,381,700				
	Spring Valley Rd from Coit Rd to Goldmark sidewalk and pedestrian improvements	11	\$153,100		\$153,100				
<i>Summary for 'Category' = Intergovernmental Partnership (6 detail records)</i>									
	Sum		\$16,948,500	\$700,000	\$7,833,200	\$6,701,000	\$1,714,300		
<i>Sidewalk Improvements</i>									
	Cypress Hills Dr from La Cosa Dr to south of Liberty Hill (east side)	11	\$110,200	\$16,530	\$93,670				
	Denton Dr from Stray Rd to Community Dr (west side only)	6	\$20,000	\$20,000					
	Hughes Lane from Lafayette Way to the alley north of Linden Ln	11	\$137,800	\$20,670	\$117,130				
	Neighborhood Area Sidewalk Improvements in the Vicinity of the Wycliff DART Station	2	\$122,500		\$122,500				
	Sidewalk Improvements Citywide		\$1,500,000	\$600,000	\$450,000	\$450,000			
	Sidewalk Improvements District 12	12	\$7,800		\$7,800				
	Sidewalk Improvements District 2	2	\$75,000	\$75,000					
	Sidewalk Improvements District 4	4	\$288,200	\$144,100	\$144,100				

<i>Proposition</i>	<i>Category</i>	<i>Location</i>	<i>CD</i>	<i>Total</i>	<i>FY2013</i>	<i>FY2014</i>	<i>FY2015</i>	<i>FY2016</i>	<i>FY2017</i>
Street and Transportation									
<i>Sidewalk Improvements</i>									
<i>Summary for 'Category' = Sidewalk Improvements (8 detail records)</i>									
	Sum			\$2,261,500	\$876,300	\$935,200	\$450,000		
<i>Street Petition</i>									
	Crenshaw Dr from Cushing Dr to Old Seagoville Rd	8	\$857,200	\$128,580		\$728,620			
	Elmdale Pl from Polk St to Tyler St	1	\$455,500	\$68,325		\$387,175			
	Fernheath Ln from South Beltline Rd. to Dead End	8	\$1,285,700	\$192,855		\$1,092,845			
	Gardenview Dr from Alto Garden Dr to Loma Garden Av	5	\$1,469,400	\$220,410		\$1,248,990			
	Longhorn Street from Bar X St to Ferguson Rd	7	\$832,700	\$124,905					\$707,795
	Michigan Ave from Saner Ave to Hobson Ave	4	\$446,900	\$67,035		\$379,865			
	Palacios Ave from Ottawa Rd to Canada Dr	6	\$471,400	\$70,710		\$400,690			
	Rockwood St from Jerden Ln to Pembroke Ave	1	\$979,600	\$146,940		\$832,660			
	Stevens St from Cayuga Dr to Davilla Ave and Davilla Ave from Stevens St to Drake St	9	\$673,500	\$101,025		\$572,475			
<i>Summary for 'Category' = Street Petition (9 detail records)</i>									
	Sum		\$7,471,900	\$1,120,785		\$5,643,320			\$707,795
<i>Street Reconstruction - Local</i>									
	Aberdeen Ave From Preston Rd To Tulane St	13	\$909,100		\$136,365		\$772,735		
	Beall Street from Dolphin to Gifford Street	7	\$365,100		\$54,765		\$310,335		
	Berry Trail from Preston Rd to Copperhill Dr	11	\$753,300		\$112,995		\$640,305		
	Bismark Dr from E. Ledbetter to 51st	5	\$900,600		\$135,090		\$765,510		
	Brierfield Dr From Brierfield Cir To W Camp Wisdom Rd	5	\$573,600		\$86,040		\$487,560		

<i>Proposition</i>	<i>Category</i>	<i>Location</i>	<i>CD</i>	<i>Total</i>	<i>FY2013</i>	<i>FY2014</i>	<i>FY2015</i>	<i>FY2016</i>	<i>FY2017</i>
Street and Transportation									
<i>Street Reconstruction - Local</i>									
		Carthage Ln from Chandler Dr to Buckingham Rd (13300 block)	10	\$317,600		\$47,640		\$269,960	
		Chandler Dr from Carthage Ln to Carthage Ln 12900 to 13100	10	\$1,095,300		\$164,295		\$931,005	
		Dahman Cir from Church Rd to end of pavement	10	\$228,800		\$34,320		\$194,480	
		Fern Ave from Godfrey Ave To C F Hawn Serv Rd	5	\$127,200		\$19,080		\$108,120	
		Five Mile Dr from Frio Dr To Burnside Ave	5	\$213,000		\$31,950		\$181,050	
		Gentle River Dr from end of pavement to Hidden Trail Dr	8	\$456,400		\$68,460		\$387,940	
		Haas from Marjorie to 51st	5	\$413,800		\$62,070		\$351,730	
		Heatherdale from Dove Meadow to Abrams	10	\$693,700		\$104,055		\$589,645	
		Highland Hills Dr from Simpson Stuart Rd to Bonnie View Rd	8	\$1,257,600		\$188,640		\$1,068,960	
		Imperial St from Bertrand Ave To Lagow St	7	\$584,200		\$87,630		\$496,570	
		JB Jackson from Grand to MLK	7	\$1,095,300		\$164,295		\$931,005	
		Langdon Ave from Thurston Dr to Denton Dr	2	\$474,000		\$71,100		\$402,900	
		Lazy River Dr From Wagon Wheels Trl To E. Red Bird Ln	5	\$609,400		\$91,410		\$517,990	
		Ledbetter Dr (E) from Kolloch Dr To Mayforge Dr	5	\$578,100		\$86,715		\$491,385	
		Mayforge Dr from Le Forge Ave To E Ledbetter Dr	5	\$1,963,900		\$294,585		\$1,669,315	
		Mingo Street from Dolphin to Gault	7	\$304,300		\$45,645		\$258,655	
		Montie St from Scyene Rd To Junction St	7	\$860,400		\$129,060		\$731,340	
		Red Fern Ln From Coit Rd To Blossomheath Ln	11	\$601,200		\$90,180		\$511,020	
		Reynoldston from Hampton to Heather Glen	5	\$1,079,500		\$161,925		\$917,575	

<i>Proposition</i>	<i>Category</i>	<i>Location</i>	<i>CD</i>	<i>Total</i>	<i>FY2013</i>	<i>FY2014</i>	<i>FY2015</i>	<i>FY2016</i>	<i>FY2017</i>
--------------------	-----------------	-----------------	-----------	--------------	---------------	---------------	---------------	---------------	---------------

Street and Transportation

Street Reconstruction - Local

Rilla Ave from Dasch St To Hillburn Dr	5	\$261,900		\$39,285		\$222,615
Rocky Ridge Rd From E Ledbetter Dr To Woodacre Dr	5	\$408,100		\$61,215		\$346,885
Southview Ln From Coit Rd To Blossomheath Ln	11	\$481,900		\$72,285		\$409,615
Spring Grove from Alpha to Coit	11	\$2,255,500		\$338,325		\$1,917,175
Stratton Dr from Calcutta Dr To Penguin Dr	5	\$213,900		\$32,085		\$181,815
Superior St from Catherine to W. Clarendon	1	\$807,700		\$121,155		\$686,545
Sweet Sue Ln from Hidden Valley Dr to Camp Wisdom (E) Rd	8	\$974,800		\$146,220		\$828,580
Tacoma from Ann Arbor to Marjorie	5	\$608,500		\$91,275		\$517,225
Trails End from Berry Trl to Arapaho Rd	11	\$1,427,500		\$214,125		\$1,213,375
Weeburn from Marsh to Mid Pines	13	\$752,100		\$112,815		\$639,285

Summary for 'Category' = Street Reconstruction - Local (34 detail records)

Sum		\$24,647,300		\$3,697,095		\$20,950,205
------------	--	---------------------	--	--------------------	--	---------------------

Street Reconstruction - Thoroughfare

Bonnie View from Overton to Springview	4	\$523,300		\$78,495		\$444,805
Canada Dr from Tamerisk St to Westmoreland Rd	3	\$2,075,000		\$311,250		\$1,763,750
Canada Dr from Tamerisk St to Westmoreland Rd	6	\$2,075,000		\$311,250		\$1,763,750
Ewing Ave (S) from Galloway Ave to Genoa Ave	4	\$1,161,000		\$174,150		\$986,850
Fordham from Bonnie View to Illinois	4	\$1,521,300		\$228,195		\$1,293,105
Hampton Rd (S) from Crow Creek Dr to north of W. Ledbetter Dr.	3	\$1,855,900		\$278,385		\$1,577,515
Hillcrest Rd from Wester Way to McKamy	12	\$615,800		\$92,370		\$523,430

<i>Proposition</i>	<i>Category</i>	<i>Location</i>	<i>CD</i>	<i>Total</i>	<i>FY2013</i>	<i>FY2014</i>	<i>FY2015</i>	<i>FY2016</i>	<i>FY2017</i>
Street and Transportation									
<i>Street Reconstruction - Thoroughfare</i>									
		Lindsley from Beacon to Munger	2	\$2,284,000		\$342,600		\$1,941,400	
		Maple Ave from 700' south of Mockingbird Ln to Mockingbird Ln	2	\$730,200		\$109,530		\$620,670	
		Merit from Park Central to Clodus Fields	11	\$1,052,700		\$157,905		\$894,795	
		Munger Blvd (N) from Rieger to Tremont	14	\$1,135,500		\$170,325		\$965,175	
		Overton Rd (E) from Biglow to Garrison	4	\$1,510,300		\$226,545		\$1,283,755	
		Woodmeadow from La Prada west to the end of divided roadway	9	\$1,703,800		\$255,570		\$1,448,230	
		<i>Summary for 'Category' = Street Reconstruction - Thoroughfare (13 detail records)</i>							
		Sum		\$18,243,800		\$2,736,570		\$15,507,230	
<i>Street Resurfacing</i>									
		5th (E) from Crawford to Denver	1	\$112,700		\$112,700			
		Abrams Rd from Mockingbird Ln to Lange Cir	14	\$262,300		\$262,300			
		Abrams Rd from Mockingbird Ln to Lange Cir	9	\$262,300		\$262,300			
		Aledo Dr from Crest Ridge Dr to Tisinger Ave	9	\$721,700		\$721,700			
		Alpha from Peyton to Coit	11	\$786,700	\$786,700				
		Ambassador Row from Regal Row to Dividend Drive	6	\$714,600			\$714,600		
		Ann Arbor Ave from Bonnie View Rd To Cranfill Dr	5	\$178,100					\$178,100
		Ann Arbor Ave from Malden Ln to Strobel Ave	4	\$234,800			\$234,800		
		Arboreal Dr from 300' north of NW Highway to Walling Ln	9	\$461,900		\$461,900			
		Autumn Woods Trl from W. Red Bird Ln to Highcrest Dr	5	\$352,200					\$352,200
		Avondale from Throckmorton to Oak Lawn Ave	14	\$106,900	\$106,900				

<i>Proposition</i>	<i>Category</i>	<i>Location</i>	<i>CD</i>	<i>Total</i>	<i>FY2013</i>	<i>FY2014</i>	<i>FY2015</i>	<i>FY2016</i>	<i>FY2017</i>
Street and Transportation									
<i>Street Resurfacing</i>									
		Barnett Ave from Irwindell Blvd to Brooklyndell Ave	1	\$77,600			\$77,600		
		Belgrade Ave from Lawnview Ave to Bisbee Dr	7	\$257,000			\$257,000		
		Belknap Ave from Illinois Ave to Sutter St	4	\$249,200			\$249,200		
		Blossomheath Ln from Coit Rd to Kit Ln	11	\$103,000	\$103,000				
		Blyth Dr from Freeport Dr to Shiloh Rd	7	\$310,100					\$310,100
		Bonnie View from Springview to Fordham	4	\$316,400			\$316,400		
		Bonnie View Rd from Cummings St To Great Trinity Forest Way	5	\$271,500					\$271,500
		Bowen St from McKinney Ave to Turtle Creek	14	\$260,000		\$260,000			
		Bowling Brook Dr from Humoresque Dr To Lazy River Dr	5	\$121,800					\$121,800
		Briar Cliff Rd from Riverside Dr to end of pavement	2	\$240,000	\$240,000				
		Briscoe Blvd (S) from W. 10th to W. 12th	1	\$184,000				\$184,000	
		Brookridge Dr from Spring Valley Rd to end of pavement (14100 block)	11	\$60,100		\$60,100			
		Bruton Rd from McKim to N Prairie Creek	5	\$348,800		\$348,800			
		Camille Ave from Davenport to Cansler	12	\$175,500				\$175,500	
		Camp Wisdom Rd (W) from Woodwick Dr to Polk St	8	\$206,900				\$206,900	
		Campanella Dr from Rialto Dr To TI Blvd	10	\$245,800				\$245,800	
		Canty St (W) from Beckley Ave to Madison Ave	1	\$189,500	\$189,500				
		Caravan Trl from Singing Hills Dr to Lazy River Dr	5	\$263,400					\$263,400
		Caraway from Latham to Northaven	13	\$304,000				\$304,000	
		Carlisle St from Sneed St to N. Hall St	14	\$217,600				\$217,600	

<i>Proposition</i>	<i>Category</i>	<i>Location</i>	<i>CD</i>	<i>Total</i>	<i>FY2013</i>	<i>FY2014</i>	<i>FY2015</i>	<i>FY2016</i>	<i>FY2017</i>
Street and Transportation									
<i>Street Resurfacing</i>									
		Cedar Springs Rd from Inwood Rd to W. Mockingbird Ln	2	\$737,500	\$737,500				
		Channel from Royal to Talisman	13	\$343,700				\$343,700	
		Chaucer Pl from Camp Wisdom Rd to Kirnwood Dr	8	\$486,800				\$486,800	
		Churchill Way from Whitley to Preston	11	\$119,300				\$119,300	
		Claremont Dr from Highland Rd to Ferguson Rd	7	\$426,400				\$426,400	
		Clearwater from Boundbrook to Woodbrook	10	\$130,500				\$130,500	
		Clodus Fields Rd from Merit Rd to Coit Rd	11	\$171,100				\$171,100	
		Cole from Harvard to Lee	14	\$664,700	\$664,700				
		Coolglen Dr from Meadowcreek Dr to end of pavement	12	\$105,700				\$105,700	
		Corinth St (S) from Woodbine Ave to 11th St	4	\$243,400				\$243,400	
		Cotillion Dr from Shiloh Rd to Plummer Dr	9	\$389,400		\$389,400			
		Countess from Camelot to end of pavement north of Regent	13	\$381,200		\$381,200			
		Dale Crest Dr from Park Ln to Walnut Hill Ln	6	\$230,300		\$230,300			
		Dale Crest from Walnut Hill to Citation	13	\$70,100		\$70,100			
		Danbury Ln from Abrams Rd to Kelman St	9	\$112,500		\$112,500			
		Deerwood Dr from Library Ln To End of Pavement	5	\$59,600					\$59,600
		Drummond Dr from Drummond Ct north to Ferguson Rd	9	\$285,800	\$285,800				
		Duchess from Royal Club to Marquis	13	\$181,100		\$181,100			
		Dumbarton Dr from Cotillion to Drummond Dr	9	\$202,800	\$202,800				
		Earlport Dr from Roundrock Rd to Winterwood Ln	12	\$73,400		\$73,400			

<i>Proposition</i>	<i>Category</i>	<i>Location</i>	<i>CD</i>	<i>Total</i>	<i>FY2013</i>	<i>FY2014</i>	<i>FY2015</i>	<i>FY2016</i>	<i>FY2017</i>
Street and Transportation									
<i>Street Resurfacing</i>									
		Earlshire from Regent to Royal	13	\$44,100		\$44,100			
		Easton Rd from Garland Rd to Gus Thomasson (Zacha Dr)	9	\$451,800		\$451,800			
		Easton Rd from Northwest Highway to concrete east of Bon Aire Dr	9	\$710,700		\$710,700			
		Edgefield from Clarendon to Illinois	1	\$889,600		\$889,600			
		Edgemere from Park Lane to Prestonshire	13	\$141,700		\$141,700			
		Eli Ave from Irwindell Blvd to Brooklyndell Ave	1	\$84,000		\$84,000			
		Emerald Isle Dr from Garland Rd to park entrance (1000-1100 blocks)	9	\$115,400		\$115,400			
		Emeraldwood Dr from Harvest Glen Dr to Belt Line Rd	11	\$45,500		\$45,500			
		Empire Central St from Harry Hines Blvd to Heartsill Dr	2	\$374,300		\$374,300			
		Ewing Ave (S) from IH 35 to Viola	1	\$91,300		\$91,300			
		Ewing from 8th to Comal	1	\$305,500		\$305,500			
		Ferndale Rd from Linkwood to Longmont	10	\$66,700		\$66,700			
		Ferndale Rd from Shoreview to NW Highway	10	\$91,500		\$91,500			
		Ferndale Rd from Walnut Hill Ln to Vistadale Dr	10	\$636,000		\$636,000			
		Flagstaff Dr from Simpson Stuart Rd to end of pavement	8	\$165,000		\$165,000			
		Forest from High Meadow to Josey	13	\$1,277,900		\$1,277,900			
		Forest Ln from Preston Haven Dr to High Forest Dr	11	\$273,800		\$273,800			
		Freeport Dr from Gross Rd to Bluffton Dr	7	\$76,700		\$76,700			
		Gaston Ave from Loving Ave to 200' west of Brendenwood Dr	9	\$307,300	\$307,300				

<i>Proposition</i>	<i>Category</i>	<i>Location</i>	<i>CD</i>	<i>Total</i>	<i>FY2013</i>	<i>FY2014</i>	<i>FY2015</i>	<i>FY2016</i>	<i>FY2017</i>
Street and Transportation									
<i>Street Resurfacing</i>									
		Gaston Ave from Loving to 200' west of Brendenwood	14	\$307,300	\$307,300				
		Glen Regal Dr from Rialto Dr To Hallum St	10	\$149,700		\$149,700			
		Goldwood Dr from Polk to Woodspan	8	\$304,300		\$304,300			
		Governor's Row from Regal Row to Empire Central	6	\$421,800					\$421,800
		Graham Ave from Lindsley to Terry St	2	\$176,500		\$176,500			
		Grayport Dr from Harvest Glen Dr to Woodbriar Dr	11	\$122,200		\$122,200			
		Gretchen Ln from Davenport Rd to Peppy Pl	12	\$225,900		\$225,900			
		Gross Rd from Shiloh Rd to La Prada Dr	7	\$171,800		\$171,800			
		Gus Thomasson Rd from Materhorn Dr to Maylee Blvd	9	\$364,100		\$364,100			
		Gus Thomasson Rd from Zacha Dr to Desdemona Dr	9	\$401,600			\$401,600		
		Harry Hines Blvd from Medical District Drive to Butler Street	2	\$591,500			\$591,500		
		Harwich Dr from Park Ln to Walnut Hill Ln	6	\$230,700			\$230,700		
		Harwich from Walnut Hill to Timberview	13	\$121,700			\$121,700		
		Haskell Ave from Lemmon to Ross	14	\$395,500			\$395,500		
		Havenwood Dr from Woodshire Dr to Woodspan Dr	8	\$273,600			\$273,600		
		Henderson Ave (N) from Richard to Ross	2	\$740,200			\$111,030		\$629,170
		Hillburn Dr from Ravehill Ln to Piedmont Dr	4	\$313,000			\$313,000		
		Hillcrest Rd from Northaven to Currin Drive	11	\$164,900			\$164,900		
		Hudspeth Ave from Biglow St to Cardinal Dr	4	\$387,700			\$387,700		
		Hume Dr from Piedmont Dr to Prichard Ln	4	\$217,400			\$217,400		

<i>Proposition</i>	<i>Category</i>	<i>Location</i>	<i>CD</i>	<i>Total</i>	<i>FY2013</i>	<i>FY2014</i>	<i>FY2015</i>	<i>FY2016</i>	<i>FY2017</i>
Street and Transportation									
<i>Street Resurfacing</i>									
		Humphrey Dr from Linfield Rd To Seaton Dr	5	\$84,900					\$84,900
		Illinois Ave from Oriol Ave to Michigan Ave	4	\$657,200			\$657,200		
		Inwood Rd from Forest Park Rd to Cedar Springs	2	\$1,202,400	\$1,202,400				
		Ivywood Dr from Woodspan Dr to Woodshire Dr	8	\$274,100			\$274,100		
		Jefferson (W) from Beckley to Madison	1	\$293,300			\$293,300		
		Jefferson (W) from Rosemont to Hampton	1	\$949,300			\$949,300		
		Jefferson (W) from Walton Walker service road to Flowers Ave	6	\$1,052,700	\$1,052,700				
		Jefferson Blvd (W) from Polk to Rosemont	3	\$836,100			\$836,100		
		Keats Dr from Poinsettia Dr to Illinois Ave	1	\$238,500			\$238,500		
		Kenwood Ave from Sperry St to Frontier Ln	9	\$140,200			\$140,200		
		Kiest Blvd (E) from S. Lancaster Rd to Kellogg Ave	4	\$1,031,000					\$1,031,000
		Kiest Blvd (W) from Beckley Ave to NB IH 35E Service Rd	4	\$314,700			\$314,700		
		Kirwood Dr from Leigh Ann Dr to Woodspan Dr	8	\$228,800			\$228,800		
		La Cabeza Dr from Spring Creek Rd To Querida Ln	12	\$122,900					\$122,900
		Lake Placid from Reynoldston Ln to Swansee St	5	\$486,800					\$486,800
		Lanewood Cir from Neering Dr to Jupiter Rd	9	\$236,800					\$236,800
		Lawnview Ave from Scyene Rd to Fairway Ave	7	\$451,800					\$451,800
		Lazy River Dr from Red Bird Ln to University Hills Blvd	5	\$672,300					\$672,300
		Leavalley Dr from Hillwood Ln to Winterwood Ln	12	\$53,200					\$53,200
		Lemmon Ave from W. University Blvd to Bluffview Blvd	14	\$407,700			\$407,700		

<i>Proposition</i>	<i>Category</i>	<i>Location</i>	<i>CD</i>	<i>Total</i>	<i>FY2013</i>	<i>FY2014</i>	<i>FY2015</i>	<i>FY2016</i>	<i>FY2017</i>
--------------------	-----------------	-----------------	-----------	--------------	---------------	---------------	---------------	---------------	---------------

Street and Transportation

Street Resurfacing

		Linfield Rd from Seay Dr To Humphrey Dr	5	\$57,700					\$57,700
		Main St from Harwood to Lamar	14	\$730,200				\$730,200	
		Marquis from Norcross to Royal	13	\$227,600					\$227,600
		Marsalis Ave (S) from Elmore Ave to Corning Ave	4	\$992,300	\$992,300				
		Matagorda Dr from Marblehead Dr to Lake Placid Dr	5	\$200,800	\$200,800				
		Mather Ct from Albrook St to S. Randolph Dr	1	\$123,400					\$123,400
		McKinney Ave from Hall to Oak Grove	14	\$246,800				\$246,800	
		McKissick Ln from Algebra Dr to W. Wheatland Rd	5	\$507,300	\$507,300				
		McMillan from Willis to Monticello	14	\$375,600				\$375,600	
		Meandering Way from Birchwood Dr to Spring Valley Rd	11	\$207,400				\$207,400	
		Meandering Way from Spring Valley Rd to Belt Line Rd	11	\$654,300				\$654,300	
		Mercer Cir from Mercer Dr to EOP	9	\$40,900				\$40,900	
		Mercer Dr from Vinewood Dr to Buckner Blvd	9	\$497,500				\$497,500	
		Mercer Pl from Mercer Dr to EOP	9	\$46,200				\$46,200	
		Merriman Pkwy from Hyde Park Dr to Sedgewick Dr	10	\$174,300	\$174,300				
		Misty Trl from Golden Creek Rd to Warm Mist Ln	12	\$85,300				\$85,300	
		Mockingbird Ln (E) from Rockaway Dr to Hillgreen Dr	9	\$988,900	\$988,900				
		Mockingbird Ln (W) from Maple to Cedar Springs	14	\$230,300	\$230,300				

<i>Proposition</i>	<i>Category</i>	<i>Location</i>	<i>CD</i>	<i>Total</i>	<i>FY2013</i>	<i>FY2014</i>	<i>FY2015</i>	<i>FY2016</i>	<i>FY2017</i>
Street and Transportation									
<i>Street Resurfacing</i>									
		Mockingbird Ln (W) from Maple to Cedar Springs	2	\$691,000	\$691,000				
		Mockingbird Ln (W) from Maple to Harry Hines	2	\$1,010,100				\$1,010,100	
		Mockingbird Ln (W) from US 183 to Quebec	6	\$1,751,700	\$1,751,700				
		Montclair Ave from Brooklyn Ave to Clarendon Dr	1	\$165,300				\$165,300	
		Montreal Ave (S) from Clarendon Dr to Brandon St	1	\$157,500				\$157,500	
		Mt. Ranier St from Albrook St to N. Randolph St	1	\$226,800				\$226,800	
		Norcross from Webb Chapel to Cromwell	13	\$294,500				\$294,500	
		Ocalla Ave from Garland Rd to San Fernando Way	9	\$88,100				\$88,100	
		Old Ox Rd from Red Bird Ln to Trade Winds Dr	5	\$196,900					\$196,900
		Olusta Dr from Oklaunion Dr to Murdock Rd	8	\$205,100				\$205,100	
		Olusta Dr from S. Murdeaux Ln to Forsythe Dr	8	\$73,800				\$73,800	
		Park Lane from Thackery St to Hillcrest Rd	13	\$171,400				\$171,400	
		Park Lane from Tulane St to Edgemere Rd	13	\$162,600				\$162,600	
		Parkdale Dr from Laverne Ave to Hilltop St	7	\$242,900				\$242,900	
		Parkshire, Lizshire, Sanshire, Danashire, Debshire, Clayshire, Pegshire	10	\$371,200				\$371,200	
		Patton from Davis to 6th	1	\$190,100	\$190,100				
		Peavy Rd from E. Lake Highlands Dr to Northcliff Dr	9	\$351,700				\$351,700	
		Pensive from Walnut Hill to Merrell	13	\$327,900				\$327,900	
		Plummer Dr from Strayhorn Dr to Ferguson Rd	9	\$545,200				\$545,200	
		Polk St (S) from Town Creek Drive to Brook Valley Lane	5	\$49,400				\$49,400	

<i>Proposition</i>	<i>Category</i>	<i>Location</i>	<i>CD</i>	<i>Total</i>	<i>FY2013</i>	<i>FY2014</i>	<i>FY2015</i>	<i>FY2016</i>	<i>FY2017</i>
Street and Transportation									
<i>Street Resurfacing</i>									
		Polk St (S) from Town Creek Drive to Brook Valley Lane	4	\$49,400				\$49,400	
		Polk St from Jefferson Blvd to Davis	1	\$237,300				\$237,300	
		Polk St from Jefferson Blvd to Davis St	3	\$237,300				\$237,300	
		Prestonshire from Tulane to Edgemere	13	\$162,800				\$162,800	
		Racine Dr from Kirnwood to Cleardale	8	\$150,400				\$150,400	
		Ravehill Ln from Waycross Dr to Prichard Ln	4	\$382,900				\$382,900	
		Red Bird Ln (W) from S Polk Street to Bar Harbor Drive	5	\$765,000				\$765,000	
		Regent from Webb Chapel to Countess	13	\$239,500				\$239,500	
		Rialto Dr from Glen Regal Dr to Bunche Dr	10	\$73,000				\$73,000	
		Roanoke Ave from Huron Dr to Mohawk Dr	2	\$53,800				\$53,800	
		Rolling Vista Dr from Woodbriar Dr to Harvest Glen Dr	11	\$168,900				\$168,900	
		Ross Ave from N. Field St to Croquette St	14	\$441,000				\$441,000	
		Royal Club from Merrell to Regent	13	\$270,400				\$270,400	
		Royal Crest Dr from W Ricks Cir to Preston Rd	11	\$263,400					\$263,400
		Royal Ln from Marsh Lane to Cox Lane	13	\$391,100					\$391,100
		Rupley Ln from Sunland St to Jupiter Rd	9	\$153,600					\$153,600
		Rustown Dr from Oates Dr to Inadale Ave	7	\$170,400					\$170,400
		Sandra Lynn Dr from Dunaway Dr to Mandalay Dr	9	\$265,100					\$265,100
		Saner Ave (E) from Michigan Ave to S. Marsalis Ave	4	\$135,600	\$135,600				
		Santa Clara Dr from Lakeland Dr to Ocalla Ave	9	\$242,400					\$242,400

<i>Proposition</i>	<i>Category</i>	<i>Location</i>	<i>CD</i>	<i>Total</i>	<i>FY2013</i>	<i>FY2014</i>	<i>FY2015</i>	<i>FY2016</i>	<i>FY2017</i>
Street and Transportation									
<i>Street Resurfacing</i>									
		Sebring Dr from Tioga St to Soft Wind Dr	8	\$176,500					\$176,500
		Selecman Dr from La Sobrina Dr to Foxworth Dr	12	\$37,000					\$37,000
		Serenade Ln from Singing Hills Dr to Wagon Wheels Trl	5	\$201,300					\$201,300
		Shady Bend from Midway to Haydale	13	\$205,900					\$205,900
		Shiloh Rd from Blyth Dr to Lockhart Ave	7	\$348,400					\$348,400
		Shiloh Rd from Oates Dr to Larry Dr	7	\$177,900					\$177,900
		Silverton from Dennis to Caraway	13	\$124,600					\$124,600
		Silvery Moon Dr from Singing Hills Dr To Silvery Moon Cir	5	\$128,400					\$128,400
		Sondra Dr from Hillside Dr to Wendover Rd	9	\$234,200					\$234,200
		Southwell Rd from Harry Hines Blvd to Denton Dr	6	\$62,600					\$62,600
		Spring Glen Dr from Willow Glen Dr To Cedar Glen Dr	5	\$104,400					\$104,400
		Squaw Valley from End of Pavement to Crested Butte Dr	12	\$124,700					\$124,700
		St. Augustine Rd (N) from Briggs Street to Alta Crest Drive	5	\$126,600	\$126,600				
		St. Augustine Rd (N) from Musgrave Drive to Oak Gate Lane	5	\$123,400	\$123,400				
		Stefani Dr from Thackery St to Hillcrest Rd	13	\$128,500					\$128,500
		Strayhorn Dr from Barnes Bridge Rd to Plummer Dr	9	\$193,700					\$193,700
		Sunnyvale from Kiest to Ann Arbor	4	\$626,800					\$626,800
		Thackery from Waggoner to Royal	13	\$358,800					\$358,800
		Tibbs St from Royal Ln to W Ricks Cir	11	\$206,900					\$206,900

<i>Proposition</i>	<i>Category</i>	<i>Location</i>	<i>CD</i>	<i>Total</i>	<i>FY2013</i>	<i>FY2014</i>	<i>FY2015</i>	<i>FY2016</i>	<i>FY2017</i>
Street and Transportation									
<i>Street Resurfacing</i>									
		Timberview from Pensive to Webb Chapel	13	\$294,800					\$294,800
		Tisinger Ave from Aledo Dr to Estacado Dr	9	\$149,200					\$149,200
		Tomlinson St from Graystone Dr to Meandering Way	12	\$98,200					\$98,200
		Tulane St from Prestonsire Ln to Lupton Dr	13	\$51,100					\$51,100
		Tumbling Creek Trl from Leaning Oaks St to Alta Mesa Dr	8	\$152,100					\$152,100
		Underwood St from Kilburn Ave To Modree Ave	5	\$34,200					\$34,200
		Velasco Ave from Abrams Rd to Pearson Dr	9	\$233,200					\$233,200
		Walmsley Ave from Montclair Ave to Willomet Ave	6	\$222,200					\$222,200
		Walnut Hill Ln from 500' west of Dale Crest Dr to Webb Chapel	13	\$345,000					\$345,000
		Walnut Hill Ln from 500' west of Dale Crest Dr to Webb Chapel	6	\$345,000					\$345,000
		Waterview Rd from Buckner Blvd to dead end	9	\$166,000					\$166,000
		West Shore Dr from Tokalon Dr to Meadow Lake Ave	9	\$273,300					\$273,300
		Western St from Sunnyside Ave to Cockrell Hill Rd	1	\$103,000					\$103,000
		White Rose Trl from end of pavement to Trails End Dr	11	\$100,100					\$100,100
		Wild Oak Dr from Highland Rd to Stonycreek Dr	7	\$140,000					\$140,000
		Wilton Ave from Ravinia Dr to Hampton Rd	1	\$428,900					\$428,900
		Windy Ridge Dr from Meadowcreek Dr to Arbor Downs Dr	12	\$137,000					\$137,000
		Wofford Dr from James St to Elmira St	7	\$179,900					\$179,900

<i>Proposition</i>	<i>Category</i>	<i>Location</i>	<i>CD</i>	<i>Total</i>	<i>FY2013</i>	<i>FY2014</i>	<i>FY2015</i>	<i>FY2016</i>	<i>FY2017</i>
Street and Transportation									
<i>Street Resurfacing</i>									
		Wonderland Trl from Northaven Rd to Peter Pan Dr	13	\$269,200					\$269,200
		Woodshire Dr from Kimwood Dr to Clearwood Dr	8	\$304,300					\$304,300
		<i>Summary for 'Category' = Street Resurfacing (207 detail records)</i>							
		Sum		\$62,207,200	\$12,298,900	\$11,283,800	\$9,398,130	\$13,920,100	\$15,306,270
<i>Target Neighborhood</i>									
		Adams (N) from Davis to 9th	1	\$826,500	\$123,975		\$702,525		
		Arizona from Saner to Kiest	4	\$1,714,300	\$257,145		\$1,457,155		
		Gooch St from S Lancaster Rd To Tracy Rd Block	8	\$1,285,700	\$192,855		\$1,092,845		
		Hendricks from Denley to Moore	4	\$551,000	\$82,650		\$468,350		
		Holly Hill from Phoenix to Pineland	13	\$857,200	\$128,580		\$728,620		
		Hughes Lane from Churchill Way to Lafayette Way	11	\$814,300	\$122,145		\$692,155		
		Madison (N) from 7th to 9th	1	\$1,040,800	\$156,120		\$884,680		
		McVey from Beckley to Marsalis	4	\$1,347,000	\$202,050		\$1,144,950		
		Mican Dr from Schofield Dr to end of pavement	6	\$497,000	\$74,550		\$422,450		
		Phoenix from Fair Oaks to Holly Hill	13	\$857,200	\$128,580		\$728,620		
		Yancy St from Carbondale St to Saipan St	4	\$500,800	\$75,120		\$425,680		
		<i>Summary for 'Category' = Target Neighborhood (11 detail records)</i>							
		Sum		\$10,291,800	\$1,543,770		\$8,748,030		
<i>Thoroughfare</i>									
		Highland Road from Ferguson to north of the entrance to Primrose at Highland (1500' to NE)	7	\$1,224,500	\$183,675			\$1,040,825	

<i>Proposition</i>	<i>Category</i>	<i>Location</i>	<i>CD</i>	<i>Total</i>	<i>FY2013</i>	<i>FY2014</i>	<i>FY2015</i>	<i>FY2016</i>	<i>FY2017</i>
Street and Transportation									
<i>Thoroughfare</i>									
		Red Bird Area Street Improvements	5	\$533,600			\$80,040		\$453,560
		Red Bird Area Street Improvements	8	\$1,454,200			\$218,130		\$1,236,070
		<i>Summary for 'Category' = Thoroughfare (3 detail records)</i>							
		Sum		\$3,212,300	\$183,675		\$298,170	\$1,040,825	\$1,689,630
<i>Trails</i>									
		Bachman Lake Trail	6	\$1,600,000		\$240,000		\$1,360,000	
		Elmwood Parkway pedestrian connection to Kiest Park	1	\$896,300		\$134,445		\$761,855	
		Flag Pole Hill Trail from Goforth to the future Park facility at the Jules Muechart Army Reserve Building	10	\$1,200,000		\$180,000		\$1,020,000	
		Lake Highlands Trail from the White Rock Creek Trail to Skillman	10	\$1,600,000		\$240,000		\$1,360,000	
		Northaven Trail Extension	13	\$1,710,600		\$256,590		\$1,454,010	
		Runyon Creek Greenbelt Trail (Glendale Park Loop Trail from Wagon Wheels Trl. and Lazy River Dr. south along Ricketts Br. onto University Dr.)	5	\$612,300		\$91,845		\$520,455	
		Runyon Creek Greenbelt Trail (Glendale Park Loop Trail from Wagon Wheels Trl. and Lazy River Dr. south along Ricketts Br. onto University Dr.)	8	\$3,061,300		\$459,195		\$2,602,105	
		Trail from Timberglen Park to Barry Barker Park	12	\$2,081,700		\$312,255		\$1,769,445	
		Trinity River Trail from Sylvan to Moore Park		\$6,418,400	\$962,760		\$5,455,640		
		Trinity Strand Phase 2 from IH 35 at Oak Lawn to DART's Inwood Station	2	\$3,358,500		\$503,775		\$2,854,725	
		<i>Summary for 'Category' = Trails (10 detail records)</i>							
		Sum		\$22,539,100	\$962,760	\$2,418,105	\$5,455,640	\$13,702,595	

<i>Proposition</i>	<i>Category</i>	<i>Location</i>	<i>CD</i>	<i>Total</i>	<i>FY2013</i>	<i>FY2014</i>	<i>FY2015</i>	<i>FY2016</i>	<i>FY2017</i>
Street and Transportation									
<i>Summary for 'Proposition' = Street and Transportation (425 detail records)</i>									
Sum				\$260,625,000	\$26,796,000	\$40,029,300	\$65,181,580	\$77,815,255	\$50,802,865
Grand Total				\$642,000,000	\$36,788,625	\$151,741,525	\$291,772,030	101,052,210	\$60,645,610

Bond Sales by Council District

CD	Proposition	Category	Location	FYTotal	FY2013	FY2014	FY2015	FY2016	FY2017
----	-------------	----------	----------	---------	--------	--------	--------	--------	--------

Council District CW

Economic Development and Housing

Economic Development and Housing

Economic Development Demand Driven Projects	\$20,000,000			\$9,250,000	\$4,500,000	\$6,250,000		
Housing Demand Driven Projects	\$20,000,000	\$4,000,000		\$6,000,000	\$3,000,000	\$7,000,000		
UNT Transit Oriented Development	\$5,000,000	\$750,000		\$2,000,000		\$2,250,000		
Canyon Boulevard	\$10,000,000	\$1,500,000		\$2,500,000		\$6,000,000		

Summary for 'Category' = Economic Development and Housing (4 detail records)

Sum \$55,000,000 \$6,250,000 \$19,750,000 \$7,500,000 \$21,500,000

Summary for 'Proposition' = Economic Development and Housing (4 detail records)

Sum \$55,000,000 \$6,250,000 \$19,750,000 \$7,500,000 \$21,500,000

Flood Protection and Storm Drainage

Flood and Storm Drainage

Levee Drainage System - Sump A (Able Pump Station)	\$91,700,000			\$91,700,000				
Mill Creek, Peaks Branch and State Thomas	\$218,600,000				\$218,600,000			

Summary for 'Category' = Flood and Storm Drainage (2 detail records)

Sum \$310,300,000 \$91,700,000 \$218,600,000

Summary for 'Proposition' = Flood Protection and Storm Drainage (2 detail records)

Sum \$310,300,000 \$91,700,000 \$218,600,000

Street and Transportation

<i>CD</i>	<i>Proposition</i>	<i>Category</i>	<i>Location</i>	<i>FYTotal</i>	<i>FY2013</i>	<i>FY2014</i>	<i>FY2015</i>	<i>FY2016</i>	<i>FY2017</i>
<i>Council District CW</i>									
<i>Bridge Repair and Modification</i>									
			Houston Street Viaduct	\$12,200,000		\$1,220,000		\$10,980,000	
			<i>Summary for 'Category' = Bridge Repair and Modification (1 detail record)</i>						
			Sum	\$12,200,000		\$1,220,000		\$10,980,000	
<i>Gateway</i>									
			West Dallas Gateway	\$34,300,000	\$3,430,000	\$1,715,000			\$29,155,000
			<i>Summary for 'Category' = Gateway (1 detail record)</i>						
			Sum	\$34,300,000	\$3,430,000	\$1,715,000			\$29,155,000
<i>Sidewalk Improvements</i>									
			Sidewalk Improvements Citywide	\$1,500,000	\$600,000	\$450,000	\$450,000		
			<i>Summary for 'Category' = Sidewalk Improvements (1 detail record)</i>						
			Sum	\$1,500,000	\$600,000	\$450,000	\$450,000		
<i>Trails</i>									
			Trinity River Trail from Sylvan to Moore Park	\$6,418,400	\$962,760		\$5,455,640		
			<i>Summary for 'Category' = Trails (1 detail record)</i>						
			Sum	\$6,418,400	\$962,760		\$5,455,640		
			<i>Summary for 'Proposition' = Street and Transportation (4 detail records)</i>						
			Sum	\$54,418,400	\$4,992,760	\$3,385,000	\$5,905,640	\$10,980,000	\$29,155,000
			<i>Summary for 'CD' = (10 detail records)</i>						
			Sum	\$419,718,400	\$11,242,760	\$114,835,000	\$232,005,640	\$32,480,000	\$29,155,000

<i>CD</i>	<i>Proposition</i>	<i>Category</i>	<i>Location</i>	<i>FYTotal</i>	<i>FY2013</i>	<i>FY2014</i>	<i>FY2015</i>	<i>FY2016</i>	<i>FY2017</i>
<i>Council District</i>		<i>1</i>							

Flood Protection and Storm Drainage

Erosion Control

Clarendon 3435	\$111,200			\$16,680	\$94,520
Martin Weiss Park Site 3 - Pedestrian Bridge	\$34,900			\$5,235	\$29,665
Martin Weiss Park Site 1 - Pavilion	\$68,600			\$10,290	\$58,310
<i>Summary for 'Category' = Erosion Control (3 detail records)</i>					
Sum	\$214,700			\$32,205	\$182,495
<i>Summary for 'Proposition' = Flood Protection and Storm Drainage (3 detail records)</i>					
Sum	\$214,700			\$32,205	\$182,495

Street and Transportation

Alley Petition

Alley between Mt. Nebo Street and Mt. Shasta Street from Mt. Royal Street to Mt. Ranier Street	\$251,000	\$37,650		\$213,350
Alley between Bishop Avenue and Haines Avenue from Neches Street to Wickford Street	\$171,400	\$25,710		\$145,690
<i>Summary for 'Category' = Alley Petition (2 detail records)</i>				
Sum	\$422,400	\$63,360		\$359,040

Complete Street

Bishop from Jefferson to 8th	\$3,061,300		\$3,061,300	
Jefferson Blvd from Crawford to Van Buren	\$1,469,400	\$220,410		\$1,248,990
Davis Street from Beckley to Hampton	\$979,600	\$146,940		\$832,660
<i>Summary for 'Category' = Complete Street (3 detail records)</i>				
Sum	\$5,510,300	\$367,350	\$3,061,300	\$2,081,650

Street Petition

<i>CD</i>	<i>Proposition</i>	<i>Category</i>	<i>Location</i>	<i>FYTotal</i>	<i>FY2013</i>	<i>FY2014</i>	<i>FY2015</i>	<i>FY2016</i>	<i>FY2017</i>
<i>Council District</i>		<i>1</i>							
			Rockwood St from Jerden Ln to Pembroke Ave	\$979,600	\$146,940		\$832,660		
			Elmdale Pl from Polk St to Tyler St	\$455,500	\$68,325		\$387,175		
			<i>Summary for 'Category' = Street Petition (2 detail records)</i>						
			Sum	\$1,435,100	\$215,265		\$1,219,835		
	<i>Street Reconstruction - Local</i>								
			Superior St from Catherine to W. Clarendon	\$807,700		\$121,155		\$686,545	
			<i>Summary for 'Category' = Street Reconstruction - Local (1 detail record)</i>						
			Sum	\$807,700		\$121,155		\$686,545	
	<i>Street Resurfacing</i>								
			Barnett Ave from Irwindell Blvd to Brooklyndell Ave	\$77,600			\$77,600		
			Jefferson (W) from Beckley to Madison	\$293,300			\$293,300		
			Edgefield from Clarendon to Illinois	\$889,600		\$889,600			
			5th (E) from Crawford to Denver	\$112,700		\$112,700			
			Montreal Ave (S) from Clarendon Dr to Brandon St	\$157,500				\$157,500	
			Montclair Ave from Brooklyn Ave to Clarendon Dr	\$165,300				\$165,300	
			Western St from Sunnyside Ave to Cockrell Hill Rd	\$103,000					\$103,000
			Patton from Davis to 6th	\$190,100	\$190,100				
			Wilton Ave from Ravinia Dr to Hampton Rd	\$428,900					\$428,900
			Eli Ave from Irwindell Blvd to Brooklyndell Ave	\$84,000		\$84,000			
			Mt. Ranier St from Albrook St to N. Randolph St	\$226,800				\$226,800	
			Polk St from Jefferson Blvd to Davis	\$237,300				\$237,300	
			Briscoe Blvd (S) from W. 10th to W. 12th	\$184,000				\$184,000	
			Mather Ct from Albrook St to S. Randolph Dr	\$123,400					\$123,400

<i>CD</i>	<i>Proposition</i>	<i>Category</i>	<i>Location</i>	<i>FYTotal</i>	<i>FY2013</i>	<i>FY2014</i>	<i>FY2015</i>	<i>FY2016</i>	<i>FY2017</i>
<i>Council District</i>		<i>1</i>							
			Ewing Ave (S) from IH 35 to Viola	\$91,300		\$91,300			
			Ewing from 8th to Comal	\$305,500		\$305,500			
			Keats Dr from Poinsettia Dr to Illinois Ave	\$238,500			\$238,500		
			Jefferson (W) from Rosemont to Hampton	\$949,300			\$949,300		
			Canty St (W) from Beckley Ave to Madison Ave	\$189,500	\$189,500				
			<i>Summary for 'Category' = Street Resurfacing (19 detail records)</i>						
			Sum	\$5,047,600	\$379,600	\$1,483,100	\$1,558,700	\$970,900	\$655,300
	<i>Target Neighborhood</i>								
			Madison (N) from 7th to 9th	\$1,040,800	\$156,120		\$884,680		
			Adams (N) from Davis to 9th	\$826,500	\$123,975		\$702,525		
			<i>Summary for 'Category' = Target Neighborhood (2 detail records)</i>						
			Sum	\$1,867,300	\$280,095		\$1,587,205		
	<i>Trails</i>								
			Elmwood Parkway pedestrian connection to Kiest Park	\$896,300		\$134,445		\$761,855	
			<i>Summary for 'Category' = Trails (1 detail record)</i>						
			Sum	\$896,300		\$134,445		\$761,855	
			<i>Summary for 'Proposition' = Street and Transportation (30 detail records)</i>						
			Sum	\$15,986,700	\$1,305,670	\$4,800,000	\$6,806,430	\$2,419,300	\$655,300
	<i>Summary for 'CD' = 1 (33 detail records)</i>								
			Sum	\$16,201,400	\$1,305,670	\$4,800,000	\$6,806,430	\$2,451,505	\$837,795

<i>CD</i>	<i>Proposition</i>	<i>Category</i>	<i>Location</i>	<i>FYTotal</i>	<i>FY2013</i>	<i>FY2014</i>	<i>FY2015</i>	<i>FY2016</i>	<i>FY2017</i>
<i>Council District</i>		<i>2</i>							

Flood Protection and Storm Drainage

Erosion Control

Cedar Springs 5910	\$185,100						\$27,765	\$157,335	
<i>Summary for 'Category' = Erosion Control (1 detail record)</i>									
Sum	\$185,100						\$27,765	\$157,335	

Flood and Storm Drainage

Mockingbird Ln from Maple Ave to Forest Park Blvd	\$2,300,000	\$2,300,000							
<i>Summary for 'Category' = Flood and Storm Drainage (1 detail record)</i>									
Sum	\$2,300,000	\$2,300,000							
<i>Summary for 'Proposition' = Flood Protection and Storm Drainage (2 detail records)</i>									
Sum	\$2,485,100	\$2,300,000					\$27,765	\$157,335	

Street and Transportation

Complete Street

Main St from Good Latimer to Exposition	\$734,700		\$734,700						
Henderson St from US 75 to Ross Ave	\$1,312,100					\$196,815		\$1,115,285	
Cedar Springs Ave from Douglas to Oak Lawn	\$150,000					\$22,500		\$127,500	
<i>Summary for 'Category' = Complete Street (3 detail records)</i>									
Sum	\$2,196,800		\$734,700			\$219,315		\$1,242,785	

Sidewalk Improvements

Neighborhood Area Sidewalk Improvements in the Vicinity of the Wycliff DART Station	\$122,500		\$122,500						
Sidewalk Improvements District 2	\$75,000	\$75,000							
<i>Summary for 'Category' = Sidewalk Improvements (2 detail records)</i>									
Sum	\$197,500	\$75,000	\$122,500						

<i>CD</i>	<i>Proposition</i>	<i>Category</i>	<i>Location</i>	<i>FYTotal</i>	<i>FY2013</i>	<i>FY2014</i>	<i>FY2015</i>	<i>FY2016</i>	<i>FY2017</i>
<i>Council District</i>		<i>2</i>							
		<i>Street Reconstruction - Local</i>							
			Langdon Ave from Thurston Dr to Denton Dr	\$474,000		\$71,100		\$402,900	
			<i>Summary for 'Category' = Street Reconstruction - Local (1 detail record)</i>						
			Sum	\$474,000		\$71,100		\$402,900	
		<i>Street Reconstruction - Thoroughfare</i>							
			Lindsley from Beacon to Munger	\$2,284,000		\$342,600		\$1,941,400	
			Maple Ave from 700' south of Mockingbird Ln to Mockingbird Ln	\$730,200		\$109,530		\$620,670	
			<i>Summary for 'Category' = Street Reconstruction - Thoroughfare (2 detail records)</i>						
			Sum	\$3,014,200		\$452,130		\$2,562,070	
		<i>Street Resurfacing</i>							
			Harry Hines Blvd from Medical District Drive to Butler Street	\$591,500			\$591,500		
			Graham Ave from Lindsley to Terry St	\$176,500		\$176,500			
			Inwood Rd from Forest Park Rd to Cedar Springs	\$1,202,400	\$1,202,400				
			Empire Central St from Harry Hines Blvd to Heartsill Dr	\$374,300		\$374,300			
			Cedar Springs Rd from Inwood Rd to W. Mockingbird Ln	\$737,500	\$737,500				
			Briar Cliff Rd from Riverside Dr to end of pavement	\$240,000	\$240,000				
			Mockingbird Ln (W) from Maple to Cedar Springs	\$691,000	\$691,000				
			Henderson Ave (N) from Richard to Ross	\$740,200			\$111,030		\$629,170
			Roanoke Ave from Huron Dr to Mohawk Dr	\$53,800				\$53,800	
			Mockingbird Ln (W) from Maple to Harry Hines	\$1,010,100				\$1,010,100	
			<i>Summary for 'Category' = Street Resurfacing (10 detail records)</i>						
			Sum	\$5,817,300	\$2,870,900	\$550,800	\$702,530	\$1,063,900	\$629,170

<i>CD</i>	<i>Proposition</i>	<i>Category</i>	<i>Location</i>	<i>FYTotal</i>	<i>FY2013</i>	<i>FY2014</i>	<i>FY2015</i>	<i>FY2016</i>	<i>FY2017</i>
<i>Council District</i>		3							

Flood Protection and Storm Drainage

Erosion Control

Deep Hill Circle 2671, 2675, 2679, 2683	\$553,500			\$83,025	\$470,475
Kiesthill Drive 3431	\$222,400			\$33,360	\$189,040
Hampton Road (S) 3817	\$228,500			\$34,275	\$194,225
Colorado (W) 705	\$77,700			\$11,655	\$66,045
Blue Ridge 3721	\$123,500			\$18,525	\$104,975
<i>Summary for 'Category' = Erosion Control (5 detail records)</i>					
Sum	\$1,205,600			\$180,840	\$1,024,760

Flood and Storm Drainage

Bahama Drive Relief System	\$577,000	\$86,550		\$490,450	
<i>Summary for 'Category' = Flood and Storm Drainage (1 detail record)</i>					
Sum	\$577,000	\$86,550		\$490,450	

Summary for 'Proposition' = Flood Protection and Storm Drainage (6 detail records)

Sum	\$1,782,600	\$86,550		\$490,450	\$180,840	\$1,024,760
------------	--------------------	-----------------	--	------------------	------------------	--------------------

Street and Transportation

Intergovernmental Partnership

Mountain Creek Parkway from 2400' southeast of Eagle Ford to Clark Road	\$6,701,000			\$6,701,000	
<i>Summary for 'Category' = Intergovernmental Partnership (1 detail record)</i>					
Sum	\$6,701,000			\$6,701,000	

Street Reconstruction - Thoroughfare

Hampton Rd (S) from Crow Creek Dr to north of W. Ledbetter Dr.	\$1,855,900		\$278,385	\$1,577,515	
--	-------------	--	-----------	-------------	--

<i>CD</i>	<i>Proposition</i>	<i>Category</i>	<i>Location</i>	<i>FYTotal</i>	<i>FY2013</i>	<i>FY2014</i>	<i>FY2015</i>	<i>FY2016</i>	<i>FY2017</i>
<i>Council District</i>		3							
			Canada Dr from Tamerisk St to Westmoreland Rd	\$2,075,000		\$311,250		\$1,763,750	
			<i>Summary for 'Category' = Street Reconstruction - Thoroughfare (2 detail records)</i>						
			Sum	\$3,930,900		\$589,635		\$3,341,265	
			<i>Street Resurfacing</i>						
			Jefferson Blvd (W) from Polk to Rosemont	\$836,100			\$836,100		
			Polk St from Jefferson Blvd to Davis St	\$237,300				\$237,300	
			<i>Summary for 'Category' = Street Resurfacing (2 detail records)</i>						
			Sum	\$1,073,400			\$836,100	\$237,300	
			<i>Summary for 'Proposition' = Street and Transportation (5 detail records)</i>						
			Sum	\$11,705,300		\$589,635	\$7,537,100	\$3,578,565	
			<i>Summary for 'CD' = 3 (11 detail records)</i>						
			Sum	\$13,487,900	\$86,550	\$589,635	\$8,027,550	\$3,759,405	\$1,024,760

<i>CD</i>	<i>Proposition</i>	<i>Category</i>	<i>Location</i>	<i>FYTotal</i>	<i>FY2013</i>	<i>FY2014</i>	<i>FY2015</i>	<i>FY2016</i>	<i>FY2017</i>
<i>Council District</i>		<i>4</i>							

Flood Protection and Storm Drainage

Erosion Control

Five Mile Pkwy W. 922	\$222,400						\$33,360	\$189,040	
Glen Oaks 816	\$137,100						\$20,565	\$116,535	
Cavender 445	\$73,100						\$10,965	\$62,135	
<i>Summary for 'Category' = Erosion Control (3 detail records)</i>									
Sum	\$432,600						\$64,890	\$367,710	
<i>Summary for 'Proposition' = Flood Protection and Storm Drainage (3 detail records)</i>									
Sum	\$432,600						\$64,890	\$367,710	

Street and Transportation

Alley Petition

Alley between Idaho Ave and Maryland Ave from Holden Ave an estimated 250' south to Dallas Power & Light property	\$85,700	\$12,855					\$72,845		
<i>Summary for 'Category' = Alley Petition (1 detail record)</i>									
Sum	\$85,700	\$12,855					\$72,845		

Alley Reconstruction

Fox Hill Ln (5949-5977) and W. Red Bird (1007-1031) A6358	\$115,600	\$17,340					\$98,260		
<i>Summary for 'Category' = Alley Reconstruction (1 detail record)</i>									
Sum	\$115,600	\$17,340					\$98,260		

Sidewalk Improvements

Sidewalk Improvements District 4	\$288,200	\$144,100	\$144,100						
<i>Summary for 'Category' = Sidewalk Improvements (1 detail record)</i>									
Sum	\$288,200	\$144,100	\$144,100						

<i>CD</i>	<i>Proposition</i>	<i>Category</i>	<i>Location</i>	<i>FYTotal</i>	<i>FY2013</i>	<i>FY2014</i>	<i>FY2015</i>	<i>FY2016</i>	<i>FY2017</i>
<i>Council District</i>		<i>4</i>							
<i>Street Petition</i>									
			Michigan Ave from Saner Ave to Hobson Ave	\$446,900	\$67,035		\$379,865		
			<i>Summary for 'Category' = Street Petition (1 detail record)</i>						
			Sum	\$446,900	\$67,035		\$379,865		
<i>Street Reconstruction - Thoroughfare</i>									
			Ewing Ave (S) from Galloway Ave to Genoa Ave	\$1,161,000		\$174,150		\$986,850	
			Overton Rd (E) from Biglow to Garrison	\$1,510,300		\$226,545		\$1,283,755	
			Bonnie View from Overton to Springview	\$523,300		\$78,495		\$444,805	
			Fordham from Bonnie View to Illinois	\$1,521,300		\$228,195		\$1,293,105	
			<i>Summary for 'Category' = Street Reconstruction - Thoroughfare (4 detail records)</i>						
			Sum	\$4,715,900		\$707,385		\$4,008,515	
<i>Street Resurfacing</i>									
			Polk St (S) from Town Creek Drive to Brook Valley Lane	\$49,400				\$49,400	
			Hudspeth Ave from Biglow St to Cardinal Dr	\$387,700			\$387,700		
			Hillburn Dr from Ravehill Ln to Piedmont Dr	\$313,000			\$313,000		
			Sunnyvale from Kiest to Ann Arbor	\$626,800					\$626,800
			Marsalis Ave (S) from Elmore Ave to Corning Ave	\$992,300	\$992,300				
			Kiest Blvd (W) from Beckley Ave to NB IH 35E Service Rd	\$314,700			\$314,700		
			Illinois Ave from Oriol Ave to Michigan Ave	\$657,200			\$657,200		
			Ravehill Ln from Waycross Dr to Prichard Ln	\$382,900				\$382,900	
			Bonnie View from Springview to Fordham	\$316,400			\$316,400		
			Belknap Ave from Illinois Ave to Sutter St	\$249,200			\$249,200		

<i>CD</i>	<i>Proposition</i>	<i>Category</i>	<i>Location</i>	<i>FYTotal</i>	<i>FY2013</i>	<i>FY2014</i>	<i>FY2015</i>	<i>FY2016</i>	<i>FY2017</i>
<i>Council District</i>		4							
			Hume Dr from Piedmont Dr to Prichard Ln	\$217,400			\$217,400		
			Saner Ave (E) from Michigan Ave to S. Marsalis Ave	\$135,600	\$135,600				
			Kiest Blvd (E) from S. Lancaster Rd to Kellogg Ave	\$1,031,000					\$1,031,000
			Ann Arbor Ave from Malden Ln to Strobel Ave	\$234,800			\$234,800		
			Corinth St (S) from Woodbine Ave to 11th St	\$243,400				\$243,400	
			<i>Summary for 'Category' = Street Resurfacing (15 detail records)</i>						
			Sum	\$6,151,800	\$1,127,900		\$2,690,400	\$675,700	\$1,657,800
			<i>Target Neighborhood</i>						
			Arizona from Saner to Kiest	\$1,714,300	\$257,145		\$1,457,155		
			Yancy St from Carbondale St to Saipan St	\$500,800	\$75,120		\$425,680		
			McVey from Beckley to Marsalis	\$1,347,000	\$202,050		\$1,144,950		
			Hendricks from Denley to Moore	\$551,000	\$82,650		\$468,350		
			<i>Summary for 'Category' = Target Neighborhood (4 detail records)</i>						
			Sum	\$4,113,100	\$616,965		\$3,496,135		
			<i>Summary for 'Proposition' = Street and Transportation (27 detail records)</i>						
			Sum	\$15,917,200	\$1,986,195	\$851,485	\$6,737,505	\$4,684,215	\$1,657,800
			<i>Summary for 'CD' = 4 (30 detail records)</i>						
			Sum	\$16,349,800	\$1,986,195	\$851,485	\$6,737,505	\$4,749,105	\$2,025,510

<i>CD</i>	<i>Proposition</i>	<i>Category</i>	<i>Location</i>	<i>FYTotal</i>	<i>FY2013</i>	<i>FY2014</i>	<i>FY2015</i>	<i>FY2016</i>	<i>FY2017</i>
<i>Council District</i>		<i>5</i>							

Flood Protection and Storm Drainage

Erosion Control

Caracas 5410 and 5416	\$171,400		\$25,710	\$145,690
Glendale Park Site 1 - Pavilion	\$68,600		\$10,290	\$58,310
Glendale Park Site 3 - S. of footbridge	\$34,300		\$5,145	\$29,155
Kildare 4927	\$85,700		\$12,855	\$72,845
Rosemont Rd. 7322	\$114,300		\$17,145	\$97,155
Twin Falls Park Trail	\$257,100		\$38,565	\$218,535
Glendale Park Site 4 - N. of footbridge	\$34,300		\$5,145	\$29,155

Summary for 'Category' = Erosion Control (7 detail records)

Sum	\$765,700		\$114,855	\$650,845
------------	-----------	--	-----------	-----------

Summary for 'Proposition' = Flood Protection and Storm Drainage (7 detail records)

Sum	\$765,700		\$114,855	\$650,845
------------	-----------	--	-----------	-----------

Street and Transportation

Alley Reconstruction

Racine Dr (6507-6711) And Autumn Woods Trl (6506-6658) A6456	\$416,900	\$62,535		\$354,365
---	-----------	----------	--	-----------

Summary for 'Category' = Alley Reconstruction (1 detail record)

Sum	\$416,900	\$62,535		\$354,365
------------	-----------	----------	--	-----------

Street Petition

Gardenview Dr from Alto Garden Dr to Loma Garden Av	\$1,469,400	\$220,410		\$1,248,990
--	-------------	-----------	--	-------------

Summary for 'Category' = Street Petition (1 detail record)

Sum	\$1,469,400	\$220,410		\$1,248,990
------------	-------------	-----------	--	-------------

<i>CD</i>	<i>Proposition</i>	<i>Category</i>	<i>Location</i>	<i>FYTotal</i>	<i>FY2013</i>	<i>FY2014</i>	<i>FY2015</i>	<i>FY2016</i>	<i>FY2017</i>
-----------	--------------------	-----------------	-----------------	----------------	---------------	---------------	---------------	---------------	---------------

Council District 5

Street Reconstruction - Local

Tacoma from Ann Arbor to Marjorie	\$608,500		\$91,275		\$517,225
Stratton Dr from Calcutta Dr To Penguin Dr	\$213,900		\$32,085		\$181,815
Rocky Ridge Rd From E Ledbetter Dr To Woodacre Dr	\$408,100		\$61,215		\$346,885
Rilla Ave from Dasch St To Hillburn Dr	\$261,900		\$39,285		\$222,615
Mayforge Dr from Le Forge Ave To E Ledbetter Dr	\$1,963,900		\$294,585		\$1,669,315
Lazy River Dr From Wagon Wheels Trl To E. Red Bird Ln	\$609,400		\$91,410		\$517,990
Haas from Marjorie to 51st	\$413,800		\$62,070		\$351,730
Five Mile Dr from Frio Dr To Burnside Ave	\$213,000		\$31,950		\$181,050
Brierfield Dr From Brierfield Cir To W Camp Wisdom Rd	\$573,600		\$86,040		\$487,560
Reynoldston from Hampton to Heather Glen	\$1,079,500		\$161,925		\$917,575
Bismark Dr from E. Ledbetter to 51st	\$900,600		\$135,090		\$765,510
Fern Ave from Godfrey Ave To C F Hawn Serv Rd	\$127,200		\$19,080		\$108,120
Ledbetter Dr (E) from Kolloch Dr To Mayforge Dr	\$578,100		\$86,715		\$491,385

Summary for 'Category' = Street Reconstruction - Local (13 detail records)

Sum	\$7,951,500		\$1,192,725		\$6,758,775
------------	-------------	--	-------------	--	-------------

Street Resurfacing

Matagorda Dr from Marblehead Dr to Lake Placid Dr	\$200,800	\$200,800		
Bonnie View Rd from Cummings St To Great Trinity Forest Way	\$271,500			\$271,500
St. Augustine Rd (N) from Musgrave Drive to Oak Gate Lane	\$123,400	\$123,400		
Ann Arbor Ave from Bonnie View Rd To Cranfill Dr	\$178,100			\$178,100

<i>CD</i>	<i>Proposition</i>	<i>Category</i>	<i>Location</i>	<i>FYTotal</i>	<i>FY2013</i>	<i>FY2014</i>	<i>FY2015</i>	<i>FY2016</i>	<i>FY2017</i>
<i>Council District</i>		<i>5</i>							
			Caravan Trl from Singing Hills Dr to Lazy River Dr	\$263,400					\$263,400
			Deerwood Dr from Library Ln To End of Pavement	\$59,600					\$59,600
			Humphrey Dr from Linfield Rd To Seaton Dr	\$84,900					\$84,900
			Lake Placid from Reynoldston Ln to Swansee St	\$486,800					\$486,800
			Polk St (S) from Town Creek Drive to Brook Valley Lane	\$49,400				\$49,400	
			Lazy River Dr from Red Bird Ln to University Hills Blvd	\$672,300					\$672,300
			Autumn Woods Trl from W. Red Bird Ln to Highcrest Dr	\$352,200					\$352,200
			Bruton Rd from McKim to N Prairie Creek	\$348,800		\$348,800			
			Bowling Brook Dr from Humoresque Dr To Lazy River Dr	\$121,800					\$121,800
			McKissick Ln from Algebra Dr to W. Wheatland Rd	\$507,300	\$507,300				
			Old Ox Rd from Red Bird Ln to Trade Winds Dr	\$196,900					\$196,900
			Serenade Ln from Singing Hills Dr to Wagon Wheels Trl	\$201,300					\$201,300
			Silvery Moon Dr from Singing Hills Dr To Silvery Moon Cir	\$128,400					\$128,400
			Spring Glen Dr from Willow Glen Dr To Cedar Glen Dr	\$104,400					\$104,400
			Underwood St from Kilburn Ave To Modree Ave	\$34,200					\$34,200
			Red Bird Ln (W) from S Polk Street to Bar Harbor Drive	\$765,000				\$765,000	
			St. Augustine Rd (N) from Briggs Street to Alta Crest Drive	\$126,600	\$126,600				
			Linfield Rd from Seay Dr To Humphrey Dr	\$57,700					\$57,700
			<i>Summary for 'Category' = Street Resurfacing (22 detail records)</i>						
			Sum	\$5,334,800	\$958,100	\$348,800		\$814,400	\$3,213,500

<i>CD</i>	<i>Proposition</i>	<i>Category</i>	<i>Location</i>	<i>FYTotal</i>	<i>FY2013</i>	<i>FY2014</i>	<i>FY2015</i>	<i>FY2016</i>	<i>FY2017</i>
<i>Council District</i>		6							

Street and Transportation

Alley Petition

Alley between Manana Drive and Park Lane from Larga Drive to Marsh Lane	\$391,800	\$58,770	\$333,030
--	-----------	----------	-----------

Summary for 'Category' = Alley Petition (1 detail record)

Sum	\$391,800	\$58,770	\$333,030
------------	-----------	----------	-----------

Intergovernmental Partnership

Denton Drive Phase 1 (Walnut Hill to Royal)	\$5,992,300	\$5,992,300	
---	-------------	-------------	--

Summary for 'Category' = Intergovernmental Partnership (1 detail record)

Sum	\$5,992,300	\$5,992,300	
------------	-------------	-------------	--

Sidewalk Improvements

Denton Dr from Stray Rd to Community Dr (west side only)	\$20,000	\$20,000	
---	----------	----------	--

Summary for 'Category' = Sidewalk Improvements (1 detail record)

Sum	\$20,000	\$20,000	
------------	----------	----------	--

Street Petition

Palacios Ave from Ottawa Rd to Canada Dr	\$471,400	\$70,710	\$400,690
--	-----------	----------	-----------

Summary for 'Category' = Street Petition (1 detail record)

Sum	\$471,400	\$70,710	\$400,690
------------	-----------	----------	-----------

Street Reconstruction - Thoroughfare

Canada Dr from Tamerisk St to Westmoreland Rd	\$2,075,000	\$311,250	\$1,763,750
---	-------------	-----------	-------------

Summary for 'Category' = Street Reconstruction - Thoroughfare (1 detail record)

Sum	\$2,075,000	\$311,250	\$1,763,750
------------	-------------	-----------	-------------

Street Resurfacing

<i>CD</i>	<i>Proposition</i>	<i>Category</i>	<i>Location</i>	<i>FYTotal</i>	<i>FY2013</i>	<i>FY2014</i>	<i>FY2015</i>	<i>FY2016</i>	<i>FY2017</i>
<i>Council District</i>		6							
			Dale Crest Dr from Park Ln to Walnut Hill Ln	\$230,300		\$230,300			
			Ambassador Row from Regal Row to Dividend Drive	\$714,600			\$714,600		
			Jefferson (W) from Walton Walker service road to Flowers Ave	\$1,052,700	\$1,052,700				
			Harwich Dr from Park Ln to Walnut Hill Ln	\$230,700			\$230,700		
			Mockingbird Ln (W) from US 183 to Quebec	\$1,751,700	\$1,751,700				
			Walmsley Ave from Montclair Ave to Willomet Ave	\$222,200					\$222,200
			Governor's Row from Regal Row to Empire Central	\$421,800					\$421,800
			Southwell Rd from Harry Hines Blvd to Denton Dr	\$62,600					\$62,600
			Walnut Hill Ln from 500' west of Dale Crest Dr to Webb Chapel	\$345,000					\$345,000
			<i>Summary for 'Category' = Street Resurfacing (9 detail records)</i>						
			Sum	\$5,031,600	\$2,804,400	\$230,300	\$945,300		\$1,051,600
			<i>Target Neighborhood</i>						
			Mican Dr from Schofield Dr to end of pavement	\$497,000	\$74,550		\$422,450		
			<i>Summary for 'Category' = Target Neighborhood (1 detail record)</i>						
			Sum	\$497,000	\$74,550		\$422,450		
			<i>Trails</i>						
			Bachman Lake Trail	\$1,600,000		\$240,000		\$1,360,000	
			<i>Summary for 'Category' = Trails (1 detail record)</i>						
			Sum	\$1,600,000		\$240,000		\$1,360,000	
			<i>Summary for 'Proposition' = Street and Transportation (16 detail records)</i>						
			Sum	\$16,079,100	\$3,028,430	\$6,773,850	\$2,101,470	\$3,123,750	\$1,051,600
			<i>Summary for 'CD' = 6 (16 detail records)</i>						
			Sum	\$16,079,100	\$3,028,430	\$6,773,850	\$2,101,470	\$3,123,750	\$1,051,600

<i>CD</i>	<i>Proposition</i>	<i>Category</i>	<i>Location</i>	<i>FYTotal</i>	<i>FY2013</i>	<i>FY2014</i>	<i>FY2015</i>	<i>FY2016</i>	<i>FY2017</i>
<i>Council District</i>		<i>7</i>							

Flood Protection and Storm Drainage

Erosion Control

Wild Oak 2488				\$148,300				\$22,245	\$126,055
				<i>Summary for 'Category' = Erosion Control (1 detail record)</i>					
			Sum	\$148,300				\$22,245	\$126,055
				<i>Summary for 'Proposition' = Flood Protection and Storm Drainage (1 detail record)</i>					
			Sum	\$148,300				\$22,245	\$126,055

Street and Transportation

Complete Street

MLK from R.B. Cullum to S.M. Wright				\$468,900			\$70,335		\$398,565
Grand from R.B. Cullum to Good Latimer				\$2,449,000	\$367,350		\$2,081,650		
Lamar (S) from IH 45 to Hatcher				\$4,898,000	\$734,700	\$4,163,300			
				<i>Summary for 'Category' = Complete Street (3 detail records)</i>					
			Sum	\$7,815,900	\$1,102,050	\$4,163,300	\$2,151,985		\$398,565

Street Petition

Longhorn Street from Bar X St to Ferguson Rd				\$832,700	\$124,905				\$707,795
				<i>Summary for 'Category' = Street Petition (1 detail record)</i>					
			Sum	\$832,700	\$124,905				\$707,795

Street Reconstruction - Local

Beall Street from Dolphin to Gifford Street				\$365,100		\$54,765		\$310,335	
Mingo Street from Dolphin to Gault				\$304,300		\$45,645		\$258,655	
Imperial St from Bertrand Ave To Lagow St				\$584,200		\$87,630		\$496,570	
JB Jackson from Grand to MLK				\$1,095,300		\$164,295		\$931,005	

<i>CD</i>	<i>Proposition</i>	<i>Category</i>	<i>Location</i>	<i>FYTotal</i>	<i>FY2013</i>	<i>FY2014</i>	<i>FY2015</i>	<i>FY2016</i>	<i>FY2017</i>
<i>Council District</i>		<i>7</i>							
			Montie St from Scyene Rd To Junction St	\$860,400		\$129,060		\$731,340	
			<i>Summary for 'Category' = Street Reconstruction - Local (5 detail records)</i>						
			Sum	\$3,209,300		\$481,395		\$2,727,905	
			<i>Street Resurfacing</i>						
			Shiloh Rd from Oates Dr to Larry Dr	\$177,900					\$177,900
			Shiloh Rd from Blyth Dr to Lockhart Ave	\$348,400					\$348,400
			Wild Oak Dr from Highland Rd to Stonycreek Dr	\$140,000					\$140,000
			Belgrade Ave from Lawnview Ave to Bisbee Dr	\$257,000			\$257,000		
			Blyth Dr from Freeport Dr to Shiloh Rd	\$310,100					\$310,100
			Wofford Dr from James St to Elmira St	\$179,900					\$179,900
			Claremont Dr from Highland Rd to Ferguson Rd	\$426,400				\$426,400	
			Rustown Dr from Oates Dr to Inadale Ave	\$170,400					\$170,400
			Parkdale Dr from Laverne Ave to Hilltop St	\$242,900				\$242,900	
			Gross Rd from Shiloh Rd to La Prada Dr	\$171,800		\$171,800			
			Freeport Dr from Gross Rd to Bluffton Dr	\$76,700		\$76,700			
			Lawnview Ave from Scyene Rd to Fairway Ave	\$451,800					\$451,800
			<i>Summary for 'Category' = Street Resurfacing (12 detail records)</i>						
			Sum	\$2,953,300		\$248,500	\$257,000	\$669,300	\$1,778,500
			<i>Thoroughfare</i>						
			Highland Road from Ferguson to north of the entrance to Primrose at Highland (1500' to NE)	\$1,224,500	\$183,675			\$1,040,825	
			<i>Summary for 'Category' = Thoroughfare (1 detail record)</i>						
			Sum	\$1,224,500	\$183,675			\$1,040,825	

<i>CD</i>	<i>Proposition</i>	<i>Category</i>	<i>Location</i>	<i>FYTotal</i>	<i>FY2013</i>	<i>FY2014</i>	<i>FY2015</i>	<i>FY2016</i>	<i>FY2017</i>
<i>Council District</i>		<i>7</i>							
			<i>Summary for 'Proposition' = Street and Transportation (22 detail records)</i>						
		Sum		\$16,035,700	\$1,410,630	\$4,893,195	\$2,408,985	\$4,438,030	\$2,884,860
			<i>Summary for 'CD' = 7 (23 detail records)</i>						
		Sum		\$16,184,000	\$1,410,630	\$4,893,195	\$2,408,985	\$4,460,275	\$3,010,915

<i>CD</i>	<i>Proposition</i>	<i>Category</i>	<i>Location</i>	<i>FYTotal</i>	<i>FY2013</i>	<i>FY2014</i>	<i>FY2015</i>	<i>FY2016</i>	<i>FY2017</i>
<i>Council District</i>		8							

Flood Protection and Storm Drainage

Erosion Control

Blackstone 2729	\$91,400		\$13,710	\$77,690
Blackstone 2745	\$220,500		\$33,075	\$187,425
Bainbridge 2733	\$91,400		\$13,710	\$77,690
Blackstone 2709	\$114,300		\$17,145	\$97,155
<i>Summary for 'Category' = Erosion Control (4 detail records)</i>				
Sum	\$517,600		\$77,640	\$439,960
<i>Summary for 'Proposition' = Flood Protection and Storm Drainage (4 detail records)</i>				
Sum	\$517,600		\$77,640	\$439,960

Street and Transportation

Alley Petition

Bluffman Drive, Castle Hills Drive & Lovingood Dr. - Lovingood Dr. - Loud Dr.	\$226,500	\$33,975	\$192,525
<i>Summary for 'Category' = Alley Petition (1 detail record)</i>			
Sum	\$226,500	\$33,975	\$192,525

Alley Reconstruction

Meadow Harvest Ln (2706-2760) And Meadow Isle Ln (2709-2763) A6155	\$165,600	\$24,840	\$140,760
Meadow Stone Ln (2705-2759) And Meadow Gate Ln (2710-2762) A6156	\$162,800	\$24,420	\$138,380
Kirnwood Dr (306-426) And Ryanridge Dr (7729- 7769) A6542	\$157,700	\$23,655	\$134,045
Meadow Dawn Ln (2706-2760) And Meadow Harvest Ln (2705-2759) A6154	\$166,300	\$24,945	\$141,355

<i>CD</i>	<i>Proposition</i>	<i>Category</i>	<i>Location</i>	<i>FYTotal</i>	<i>FY2013</i>	<i>FY2014</i>	<i>FY2015</i>	<i>FY2016</i>	<i>FY2017</i>
<i>Council District</i>		8							
	Meadow Dawn Ln (2705-2759) And Meadow Bluff Ln (2706-2756) A6158			\$154,200	\$23,130		\$131,070		
	Coach Light Rd (7204-7260) And Pecan Ridge Dr (7322-7346) A6160			\$316,100	\$47,415		\$268,685		
	Ivywood Dr (807-955) And Havenwood Dr (806-948) A6501			\$263,700	\$39,555		\$224,145		
	Meadow Bluff Ln (2703-2755) And W Camp Wisdom Rd (2400-2400) A6157			\$154,900	\$23,235		\$131,665		
	Meadow Gate Ln (2703-2763) And Meadow Isle Ln (2704-2764) A6161			\$195,000	\$29,250		\$165,750		
				<i>Summary for 'Category' = Alley Reconstruction (9 detail records)</i>					
			Sum	\$1,736,300	\$260,445		\$1,475,855		
	<i>Street Petition</i>								
	Crenshaw Dr from Cushing Dr to Old Seagoville Rd			\$857,200	\$128,580		\$728,620		
	Fernheath Ln from South Beltline Rd. to Dead End			\$1,285,700	\$192,855		\$1,092,845		
				<i>Summary for 'Category' = Street Petition (2 detail records)</i>					
			Sum	\$2,142,900	\$321,435		\$1,821,465		
	<i>Street Reconstruction - Local</i>								
	Gentle River Dr from end of pavement to Hidden Trail Dr			\$456,400		\$68,460		\$387,940	
	Sweet Sue Ln from Hidden Valley Dr to Camp Wisdom (E) Rd			\$974,800		\$146,220		\$828,580	
	Highland Hills Dr from Simpson Stuart Rd to Bonnie View Rd			\$1,257,600		\$188,640		\$1,068,960	
				<i>Summary for 'Category' = Street Reconstruction - Local (3 detail records)</i>					
			Sum	\$2,688,800		\$403,320		\$2,285,480	
	<i>Street Resurfacing</i>								
	Goldwood Dr from Polk to Woodspan			\$304,300		\$304,300			

<i>CD</i>	<i>Proposition</i>	<i>Category</i>	<i>Location</i>	<i>FYTotal</i>	<i>FY2013</i>	<i>FY2014</i>	<i>FY2015</i>	<i>FY2016</i>	<i>FY2017</i>
<i>Council District</i>		8							
			Tumbling Creek Trl from Leaning Oaks St to Alta Mesa Dr	\$152,100					\$152,100
			Kirnwood Dr from Leigh Ann Dr to Woodspan Dr	\$228,800			\$228,800		
			Racine Dr from Kirnwood to Cleardale	\$150,400				\$150,400	
			Olusta Dr from Oklaunion Dr to Murdock Rd	\$205,100				\$205,100	
			Olusta Dr from S. Murdeaux Ln to Forsythe Dr	\$73,800				\$73,800	
			Havenwood Dr from Woodshire Dr to Woodspan Dr	\$273,600			\$273,600		
			Woodshire Dr from Kirnwood Dr to Clearwood Dr	\$304,300					\$304,300
			Camp Wisdom Rd (W) from Woodwick Dr to Polk St	\$206,900				\$206,900	
			Chaucer Pl from Camp Wisdom Rd to Kirnwood Dr	\$486,800				\$486,800	
			Sebring Dr from Tioga St to Soft Wind Dr	\$176,500					\$176,500
			Ivywood Dr from Woodspan Dr to Woodshire Dr	\$274,100			\$274,100		
			Flagstaff Dr from Simpson Stuart Rd to end of pavement	\$165,000		\$165,000			
			<i>Summary for 'Category' = Street Resurfacing (13 detail records)</i>						
			Sum	\$3,001,700		\$469,300	\$776,500	\$1,123,000	\$632,900
			<i>Target Neighborhood</i>						
			Gooch St from S Lancaster Rd To Tracy Rd Block	\$1,285,700	\$192,855		\$1,092,845		
			<i>Summary for 'Category' = Target Neighborhood (1 detail record)</i>						
			Sum	\$1,285,700	\$192,855		\$1,092,845		
			<i>Thoroughfare</i>						
			Red Bird Area Street Improvements	\$1,454,200			\$218,130		\$1,236,070
			<i>Summary for 'Category' = Thoroughfare (1 detail record)</i>						
			Sum	\$1,454,200			\$218,130		\$1,236,070
			<i>Trails</i>						

<i>CD</i>	<i>Proposition</i>	<i>Category</i>	<i>Location</i>	<i>FYTotal</i>	<i>FY2013</i>	<i>FY2014</i>	<i>FY2015</i>	<i>FY2016</i>	<i>FY2017</i>
<i>Council District</i>		8							
			Runyon Creek Greenbelt Trail (Glendale Park Loop Trail from Wagon Wheels Trl. and Lazy River Dr. south along Ricketts Br. onto University Dr.)	\$3,061,300		\$459,195		\$2,602,105	
				<i>Summary for 'Category' = Trails (1 detail record)</i>					
			Sum	\$3,061,300		\$459,195		\$2,602,105	
				<i>Summary for 'Proposition' = Street and Transportation (31 detail records)</i>					
			Sum	\$15,597,400	\$808,710	\$1,331,815	\$5,577,320	\$6,010,585	\$1,868,970
				<i>Summary for 'CD' = 8 (35 detail records)</i>					
			Sum	\$16,115,000	\$808,710	\$1,331,815	\$5,577,320	\$6,088,225	\$2,308,930

<i>CD</i>	<i>Proposition</i>	<i>Category</i>	<i>Location</i>	<i>FYTotal</i>	<i>FY2013</i>	<i>FY2014</i>	<i>FY2015</i>	<i>FY2016</i>	<i>FY2017</i>
<i>Council District</i>		<i>9</i>							

Flood Protection and Storm Drainage

Erosion Control

Kiltartan 1511	\$177,900						\$26,685	\$151,215
Healey 2116 and Kingsman 9869	\$137,100						\$20,565	\$116,535
Lyre Lane 6909 and Chantilly Court 6916	\$68,600						\$10,290	\$58,310
Mercedes 6607, 6615, 6621	\$114,300						\$17,145	\$97,155
Sperry St. 3220	\$84,000						\$12,600	\$71,400
Summer Creek Circle 6121, 6123, 6125,6127,6139,6141	\$434,200						\$65,130	\$369,070
Sunland Street 11825	\$45,700						\$6,855	\$38,845
Tamarack 1745, 1739, 1751	\$308,500			\$46,275	\$262,225			
Tranquilla Dr. 1251	\$109,700						\$16,455	\$93,245
Twin Creek 9726	\$123,500						\$18,525	\$104,975
Springwater 9204, 9210, 9216	\$297,100						\$44,565	\$252,535
Beechmont Dr. 2507	\$54,800						\$8,220	\$46,580
Dixon Branch at Easton Road	\$182,800						\$27,420	\$155,380

Summary for 'Category' = Erosion Control (13 detail records)

Sum	\$2,138,200	\$46,275	\$262,225				\$274,455	\$1,555,245
------------	-------------	----------	-----------	--	--	--	-----------	-------------

Summary for 'Proposition' = Flood Protection and Storm Drainage (13 detail records)

Sum	\$2,138,200	\$46,275	\$262,225				\$274,455	\$1,555,245
------------	-------------	----------	-----------	--	--	--	-----------	-------------

Street and Transportation

Intergovernmental Partnership

SOPAC Trail Phase 3 (East Dallas Veloway)	\$2,081,700	\$700,000	\$1,381,700					
---	-------------	-----------	-------------	--	--	--	--	--

<i>CD</i>	<i>Proposition</i>	<i>Category</i>	<i>Location</i>	<i>FYTotal</i>	<i>FY2013</i>	<i>FY2014</i>	<i>FY2015</i>	<i>FY2016</i>	<i>FY2017</i>
<i>Council District</i>		9							
				<i>Summary for 'Category' = Intergovernmental Partnership (1 detail record)</i>					
			Sum	\$2,081,700	\$700,000	\$1,381,700			
			<i>Street Petition</i>						
			Stevens St from Cayuga Dr to Davilla Ave and Davilla Ave from Stevens St to Drake St	\$673,500	\$101,025		\$572,475		
				<i>Summary for 'Category' = Street Petition (1 detail record)</i>					
			Sum	\$673,500	\$101,025		\$572,475		
			<i>Street Reconstruction - Thoroughfare</i>						
			Woodmeadow from La Prada west to the end of divided roadway	\$1,703,800		\$255,570		\$1,448,230	
				<i>Summary for 'Category' = Street Reconstruction - Thoroughfare (1 detail record)</i>					
			Sum	\$1,703,800		\$255,570		\$1,448,230	
			<i>Street Resurfacing</i>						
			Gus Thomasson Rd from Zacha Dr to Desdemona Dr	\$401,600			\$401,600		
			Gaston Ave from Loving Ave to 200' west of Brendenwood Dr	\$307,300	\$307,300				
			Mercer Pl from Mercer Dr to EOP	\$46,200				\$46,200	
			Velasco Ave from Abrams Rd to Pearson Dr	\$233,200					\$233,200
			Danbury Ln from Abrams Rd to Kelman St	\$112,500		\$112,500			
			Aledo Dr from Crest Ridge Dr to Tisinger Ave	\$721,700		\$721,700			
			Arboreal Dr from 300' north of NW Highway to Walling Ln	\$461,900		\$461,900			
			Mercer Dr from Vinewood Dr to Buckner Blvd	\$497,500				\$497,500	
			Mockingbird Ln (E) from Rockaway Dr to Hillgreen Dr	\$988,900	\$988,900				
			Drummond Dr from Drummond Ct north to Ferguson Rd	\$285,800	\$285,800				

<i>CD</i>	<i>Proposition</i>	<i>Category</i>	<i>Location</i>	<i>FYTotal</i>	<i>FY2013</i>	<i>FY2014</i>	<i>FY2015</i>	<i>FY2016</i>	<i>FY2017</i>
<i>Council District</i>		<i>9</i>							
			West Shore Dr from Tokalon Dr to Meadow Lake Ave	\$273,300					\$273,300
			Easton Rd from Northwest Highway to concrete east of Bon Aire Dr	\$710,700		\$710,700			
			Ocala Ave from Garland Rd to San Fernando Way	\$88,100				\$88,100	
			Tisinger Ave from Aledo Dr to Estacado Dr	\$149,200					\$149,200
			Easton Rd from Garland Rd to Gus Thomasson (Zacha Dr)	\$451,800		\$451,800			
			Cotillion Dr from Shiloh Rd to Plummer Dr	\$389,400		\$389,400			
			Emerald Isle Dr from Garland Rd to park entrance (1000-1100 blocks)	\$115,400		\$115,400			
			Gus Thomasson Rd from Materhorn Dr to Maylee Blvd	\$364,100		\$364,100			
			Sondra Dr from Hillside Dr to Wendover Rd	\$234,200					\$234,200
			Sandra Lynn Dr from Dunaway Dr to Mandalay Dr	\$265,100					\$265,100
			Abrams Rd from Mockingbird Ln to Lange Cir	\$262,300		\$262,300			
			Peavy Rd from E. Lake Highlands Dr to Northcliff Dr	\$351,700				\$351,700	
			Santa Clara Dr from Lakeland Dr to Ocala Ave	\$242,400					\$242,400
			Waterview Rd from Buckner Blvd to dead end	\$166,000					\$166,000
			Plummer Dr from Strayhorn Dr to Ferguson Rd	\$545,200				\$545,200	
			Rupley Ln from Sunland St to Jupiter Rd	\$153,600					\$153,600
			Kenwood Ave from Sperry St to Frontier Ln	\$140,200			\$140,200		
			Lanewood Cir from Neering Dr to Jupiter Rd	\$236,800					\$236,800
			Strayhorn Dr from Barnes Bridge Rd to Plummer Dr	\$193,700					\$193,700
			Dumbarton Dr from Cotillion to Drummond Dr	\$202,800	\$202,800				
			Mercer Cir from Mercer Dr to EOP	\$40,900				\$40,900	

<i>CD</i>	<i>Proposition</i>	<i>Category</i>	<i>Location</i>	<i>FYTotal</i>	<i>FY2013</i>	<i>FY2014</i>	<i>FY2015</i>	<i>FY2016</i>	<i>FY2017</i>
<i>Council District</i>	<i>9</i>								
				<i>Summary for 'Category' = Street Resurfacing (31 detail records)</i>					
			Sum	\$9,633,500	\$1,784,800	\$3,589,800	\$541,800	\$1,569,600	\$2,147,500
				<i>Summary for 'Proposition' = Street and Transportation (34 detail records)</i>					
			Sum	\$14,092,500	\$2,585,825	\$5,227,070	\$1,114,275	\$3,017,830	\$2,147,500
				<i>Summary for 'CD' = 9 (47 detail records)</i>					
			Sum	\$16,230,700	\$2,632,100	\$5,489,295	\$1,114,275	\$3,292,285	\$3,702,745

<i>CD</i>	<i>Proposition</i>	<i>Category</i>	<i>Location</i>	<i>FYTotal</i>	<i>FY2013</i>	<i>FY2014</i>	<i>FY2015</i>	<i>FY2016</i>	<i>FY2017</i>
-----------	--------------------	-----------------	-----------------	----------------	---------------	---------------	---------------	---------------	---------------

Council District 10

Flood Protection and Storm Drainage

Erosion Control

Whitehurst 9730 (Audelia Branch - W. Bank downstream of Whitehurst)	\$444,800						\$66,720	\$378,080
Audelia 11601 (Audelia Branch - E. Bank downstream of Audelia Bridge)	\$617,700						\$92,655	\$525,045
Whitehurst 9727 (Jackson Branch - E. Bank upstream of Whitehurst Br)	\$345,900						\$51,885	\$294,015
Greenville Avenue 9320/Vista View 8915	\$197,700						\$29,655	\$168,045
Green Oaks Circle 9032	\$137,100						\$20,565	\$116,535
Royal Lane 9750 (Jackson Branch - E. Bank downstream of Royal Bridge)	\$259,400						\$38,910	\$220,490
Harry Moss Park Site 1 - S. of pedestrian bridge	\$68,600						\$10,290	\$58,310
Skillman 8109	\$163,400						\$24,510	\$138,890
Abrams Road Bridge - hike & bike trail	\$48,000						\$7,200	\$40,800
Church Road 9233	\$160,000						\$24,000	\$136,000
Skillman 7920 (Jackson Branch - E. Bank downstream of Skillman Br)	\$518,900						\$77,835	\$441,065
Rocky Branch @ Middle Downs Sites 1, 2, 3, 4	\$666,300						\$99,945	\$566,355
Langdale Circle 8668 and 8656	\$285,600						\$42,840	\$242,760
Fair Oaks Crossing 8201	\$114,300						\$17,145	\$97,155
Lanett Circle N. 10741	\$142,800						\$21,420	\$121,380
Fair Oaks Crossing 8849	\$285,600						\$42,840	\$242,760

Summary for 'Category' = Erosion Control (16 detail records)

Sum \$4,456,100 \$668,415 \$3,787,685

<i>CD</i>	<i>Proposition</i>	<i>Category</i>	<i>Location</i>	<i>FYTotal</i>	<i>FY2013</i>	<i>FY2014</i>	<i>FY2015</i>	<i>FY2016</i>	<i>FY2017</i>
<i>Council District</i>		10							
			<i>Summary for 'Proposition' = Flood Protection and Storm Drainage (16 detail records)</i>						
		Sum		\$4,456,100				\$668,415	\$3,787,685
Street and Transportation									
			<i>Alley Petition</i>						
			Alley southwest and parallel to Shoreview Road from Forest Trail to Nimrod Trail	\$189,800	\$28,470		\$161,330		
			<i>Summary for 'Category' = Alley Petition (1 detail record)</i>						
		Sum		\$189,800	\$28,470		\$161,330		
			<i>Alley Reconstruction</i>						
			Shoreview Rd (9506-9748) And Audelia Rd (8725-8725) A8400	\$368,900	\$55,335		\$313,565		
			Overwood Rd (9406-9536) And Parkford Dr (9407-9529) A8357	\$241,400	\$36,210		\$205,190		
			Aldwick Dr (8805-9031) And Fenchurch Rd (8904-9020) A8409	\$218,000	\$32,700		\$185,300		
			Parkford Dr (9819-9963) And Ridgheaven Dr (9806-9950) A8324	\$308,400	\$46,260		\$262,140		
			Shoreview Rd (9222-9246) And Deer Trail Dr (8044-8044) A11633	\$71,200	\$10,680		\$60,520		
			Buxhill Dr (9405-9735) And Lanshire Dr (9408-9636) A8389	\$310,400	\$46,560		\$263,840		
			Buxhill Dr (9406-9734) And Shady Dale Ln (9607-9735) A8390	\$244,500	\$36,675		\$207,825		
			Chesterton Dr (10206-10432) And Walnut Hill Ln (10201-10201) A8448	\$302,100	\$45,315		\$256,785		
			Chiswell Rd (9707-9747) And Lanshire Dr (9718-9738) A8384	\$85,700	\$12,855		\$72,845		
			Estate Ln (10111-10171) And Caribou Trl (9909-9949) A8686	\$165,400	\$24,810		\$140,590		

<i>CD</i>	<i>Proposition</i>	<i>Category</i>	<i>Location</i>	<i>FYTotal</i>	<i>FY2013</i>	<i>FY2014</i>	<i>FY2015</i>	<i>FY2016</i>	<i>FY2017</i>
<i>Council District 10</i>									
			Lakemere Dr (9807-9951) And Crestwick Dr (9806-9940) A8318	\$304,500	\$45,675		\$258,825		
			<i>Summary for 'Category' = Alley Reconstruction (11 detail records)</i>						
			Sum	\$2,620,500	\$393,075		\$2,227,425		
<i>Intergovernmental Partnership</i>									
			LBJ at Skillman Interchange	\$1,714,300				\$1,714,300	
			<i>Summary for 'Category' = Intergovernmental Partnership (1 detail record)</i>						
			Sum	\$1,714,300				\$1,714,300	
<i>Street Reconstruction - Local</i>									
			Carthage Ln from Chandler Dr to Buckingham Rd (13300 block)	\$317,600		\$47,640		\$269,960	
			Chandler Dr from Carthage Ln to Carthage Ln 12900 to 13100	\$1,095,300		\$164,295		\$931,005	
			Heatherdale from Dove Meadow to Abrams	\$693,700		\$104,055		\$589,645	
			Dahman Cir from Church Rd to end of pavement	\$228,800		\$34,320		\$194,480	
			<i>Summary for 'Category' = Street Reconstruction - Local (4 detail records)</i>						
			Sum	\$2,335,400		\$350,310		\$1,985,090	
<i>Street Resurfacing</i>									
			Campanella Dr from Rialto Dr To TI Blvd	\$245,800				\$245,800	
			Parkshire, Lizshire, Sanshire, Danashire, Debshire, Clayshire, Pegshire	\$371,200				\$371,200	
			Merriman Pkwy from Hyde Park Dr to Sedgewick Dr	\$174,300	\$174,300				
			Clearwater from Boundbrook to Woodbrook	\$130,500				\$130,500	
			Rialto Dr from Glen Regal Dr to Bunche Dr	\$73,000				\$73,000	
			Glen Regal Dr from Rialto Dr To Hallum St	\$149,700		\$149,700			
			Ferndale Rd from Walnut Hill Ln to Vistadale Dr	\$636,000		\$636,000			

<i>CD</i>	<i>Proposition</i>	<i>Category</i>	<i>Location</i>	<i>FYTotal</i>	<i>FY2013</i>	<i>FY2014</i>	<i>FY2015</i>	<i>FY2016</i>	<i>FY2017</i>
<i>Council District</i>		<i>10</i>							
			Ferndale Rd from Shoreview to NW Highway	\$91,500		\$91,500			
			Ferndale Rd from Linkwood to Longmont	\$66,700		\$66,700			
			<i>Summary for 'Category' = Street Resurfacing (9 detail records)</i>						
			Sum	\$1,938,700	\$174,300	\$943,900		\$820,500	
			<i>Trails</i>						
			Flag Pole Hill Trail from Goforth to the future Park facility at the Jules Muchart Army Reserve Building	\$1,200,000		\$180,000		\$1,020,000	
			Lake Highlands Trail from the White Rock Creek Trail to Skillman	\$1,600,000		\$240,000		\$1,360,000	
			<i>Summary for 'Category' = Trails (2 detail records)</i>						
			Sum	\$2,800,000		\$420,000		\$2,380,000	
			<i>Summary for 'Proposition' = Street and Transportation (28 detail records)</i>						
			Sum	\$11,598,700	\$595,845	\$1,714,210	\$2,388,755	\$6,899,890	
			<i>Summary for 'CD' = 10 (44 detail records)</i>						
			Sum	\$16,054,800	\$595,845	\$1,714,210	\$2,388,755	\$7,568,305	\$3,787,685

<i>CD</i>	<i>Proposition</i>	<i>Category</i>	<i>Location</i>	<i>FYTotal</i>	<i>FY2013</i>	<i>FY2014</i>	<i>FY2015</i>	<i>FY2016</i>	<i>FY2017</i>
-----------	--------------------	-----------------	-----------------	----------------	---------------	---------------	---------------	---------------	---------------

Council District 11

Flood Protection and Storm Drainage

Erosion Control

Anderson Bonner Park Site 1 - hike & bike trail (WRC 164)	\$231,400		\$34,710	\$196,690
Clubhouse Circle 6523 and 6527	\$114,300		\$17,145	\$97,155
Spring Valley 8444	\$297,100		\$44,565	\$252,535
Pagewood 10553	\$29,700		\$4,455	\$25,245
Spring Grove 13316	\$74,000		\$11,100	\$62,900
Kalani 6323	\$79,100		\$11,865	\$67,235
Kiowa Parkway Hike and Bike Trail	\$82,300		\$12,345	\$69,955
Burninglog 13156	\$68,600		\$10,290	\$58,310
Royal Lane 7832 and 7920	\$493,600		\$74,040	\$419,560

Summary for 'Category' = Erosion Control (9 detail records)

Sum \$1,470,100 \$220,515 \$1,249,585

Summary for 'Proposition' = Flood Protection and Storm Drainage (9 detail records)

Sum \$1,470,100 \$220,515 \$1,249,585

Street and Transportation

Alley Reconstruction

Baxtershire Dr (7110-7250) And Eudora Dr (7109-7239) A8730	\$273,400	\$41,010	\$232,390
Marbrook Dr (12109-12323) And Madeleine Cir (12104-12136) A8887	\$290,300	\$43,545	\$246,755
Lavendale Ave (6405-6441) And Royalton Dr (6456-6480) A8952	\$156,900	\$23,535	\$133,365
Lavendale Ave (6404-6474) And Royal Ln (6405-6475) A8967	\$229,200	\$34,380	\$194,820

<i>CD</i>	<i>Proposition</i>	<i>Category</i>	<i>Location</i>	<i>FYTotal</i>	<i>FY2013</i>	<i>FY2014</i>	<i>FY2015</i>	<i>FY2016</i>	<i>FY2017</i>
<i>Council District II</i>									
			Lavendale Ave (6120-6338) And Royal Ln (6121-6339) A8951	\$265,900	\$39,885		\$226,015		
			Lafayette Way (6207-6263) And Prestoncrest Ln (6206-6262) A8878	\$183,800	\$27,570		\$156,230		
			Lavendale Ave (6908-7048) And Royal Ln (6907-7047) A8781	\$295,300	\$44,295		\$251,005		
			Azalea Ln (7107-7239) And Currin Dr (7106-7238) A8773	\$258,700	\$38,805		\$219,895		
			Lavendale Ave (6111-6339) And Azalea Ln (6118-6338) A8948	\$292,400	\$43,860		\$248,540		
			Knollview Dr (14810-14856) And Tophill Cir (7105-7115) A9244	\$143,500	\$21,525		\$121,975		
			Churchill Way (6824-6838) And Hillcrest Rd (12361-12361) A8884	\$90,700	\$13,605		\$77,095		
			Crest Brook Dr (11311-11439) And Parkchester Dr (11402-11468) A8905	\$343,700	\$51,555		\$292,145		
			Delmeta Dr (6811-6957) And Quarterway Dr (6810-6950) A9242	\$296,800	\$44,520		\$252,280		
			Azalea Ln (6121-6339) And Royalton Dr (6142-6342) A8946	\$253,900	\$38,085		\$215,815		
			Midbury Dr (7806-7848) And Northaven Rd (7807-7847) A8756	\$129,000	\$19,350		\$109,650		
			<i>Summary for 'Category' = Alley Reconstruction (15 detail records)</i>						
			Sum	\$3,503,500	\$525,525		\$2,977,975		
<i>Intergovernmental Partnership</i>									
			Spring Valley Rd from Coit Rd to Goldmark sidewalk and pedestrian improvements	\$153,100		\$153,100			
			<i>Summary for 'Category' = Intergovernmental Partnership (1 detail record)</i>						
			Sum	\$153,100		\$153,100			
<i>Sidewalk Improvements</i>									

<i>CD</i>	<i>Proposition</i>	<i>Category</i>	<i>Location</i>	<i>FYTotal</i>	<i>FY2013</i>	<i>FY2014</i>	<i>FY2015</i>	<i>FY2016</i>	<i>FY2017</i>
<i>Council District 11</i>									
			Cypress Hills Dr from La Cosa Dr to south of Liberty Hill (east side)	\$110,200	\$16,530	\$93,670			
			Hughes Lane from Lafayette Way to the alley north of Linden Ln	\$137,800	\$20,670	\$117,130			
			<i>Summary for 'Category' = Sidewalk Improvements (2 detail records)</i>						
			Sum	\$248,000	\$37,200	\$210,800			
			<i>Street Reconstruction - Local</i>						
			Trails End from Berry Trl to Arapaho Rd	\$1,427,500		\$214,125		\$1,213,375	
			Spring Grove from Alpha to Coit	\$2,255,500		\$338,325		\$1,917,175	
			Southview Ln From Coit Rd To Blossomheath Ln	\$481,900		\$72,285		\$409,615	
			Red Fern Ln From Coit Rd To Blossomheath Ln	\$601,200		\$90,180		\$511,020	
			Berry Trail from Preston Rd to Copperhill Dr	\$753,300		\$112,995		\$640,305	
			<i>Summary for 'Category' = Street Reconstruction - Local (5 detail records)</i>						
			Sum	\$5,519,400		\$827,910		\$4,691,490	
			<i>Street Reconstruction - Thoroughfare</i>						
			Merit from Park Central to Clodus Fields	\$1,052,700		\$157,905		\$894,795	
			<i>Summary for 'Category' = Street Reconstruction - Thoroughfare (1 detail record)</i>						
			Sum	\$1,052,700		\$157,905		\$894,795	
			<i>Street Resurfacing</i>						
			White Rose Trl from end of pavement to Trails End Dr	\$100,100					\$100,100
			Hillcrest Rd from Northaven to Currin Drive	\$164,900			\$164,900		
			Royal Crest Dr from W Ricks Cir to Preston Rd	\$263,400					\$263,400
			Grayport Dr from Harvest Glen Dr to Woodbriar Dr	\$122,200		\$122,200			
			Alpha from Peyton to Coit	\$786,700	\$786,700				

<i>CD</i>	<i>Proposition</i>	<i>Category</i>	<i>Location</i>	<i>FYTotal</i>	<i>FY2013</i>	<i>FY2014</i>	<i>FY2015</i>	<i>FY2016</i>	<i>FY2017</i>
<i>Council District 11</i>									
			Meandering Way from Spring Valley Rd to Belt Line Rd	\$654,300				\$654,300	
			Rolling Vista Dr from Woodbriar Dr to Harvest Glen Dr	\$168,900				\$168,900	
			Tibbs St from Royal Ln to W Ricks Cir	\$206,900					\$206,900
			Clodus Fields Rd from Merit Rd to Coit Rd	\$171,100				\$171,100	
			Churchill Way from Whitley to Preston	\$119,300				\$119,300	
			Blossomheath Ln from Coit Rd to Kit Ln	\$103,000	\$103,000				
			Forest Ln from Preston Haven Dr to High Forest Dr	\$273,800		\$273,800			
			Brookridge Dr from Spring Valley Rd to end of pavement (14100 block)	\$60,100		\$60,100			
			Meandering Way from Birchwood Dr to Spring Valley Rd	\$207,400				\$207,400	
			Emeraldwood Dr from Harvest Glen Dr to Belt Line Rd	\$45,500		\$45,500			
			<i>Summary for 'Category' = Street Resurfacing (15 detail records)</i>						
			Sum	\$3,447,600	\$889,700	\$501,600	\$164,900	\$1,321,000	\$570,400
			<i>Target Neighborhood</i>						
			Hughes Lane from Churchill Way to Lafayette Way	\$814,300	\$122,145		\$692,155		
			<i>Summary for 'Category' = Target Neighborhood (1 detail record)</i>						
			Sum	\$814,300	\$122,145		\$692,155		
			<i>Summary for 'Proposition' = Street and Transportation (40 detail records)</i>						
			Sum	\$14,738,600	\$1,574,570	\$1,851,315	\$3,835,030	\$6,907,285	\$570,400
			<i>Summary for 'CD' = 11 (49 detail records)</i>						
			Sum	\$16,208,700	\$1,574,570	\$1,851,315	\$3,835,030	\$7,127,800	\$1,819,985

<i>CD</i>	<i>Proposition</i>	<i>Category</i>	<i>Location</i>	<i>FYTotal</i>	<i>FY2013</i>	<i>FY2014</i>	<i>FY2015</i>	<i>FY2016</i>	<i>FY2017</i>
<i>Council District</i>		<i>12</i>							

Flood Protection and Storm Drainage

Erosion Control

Squaw Valley 17628	\$91,400						\$13,710	\$77,690
Country Brook Pond between Park Grove Ln and Quail Hollow Rd	\$40,000						\$6,000	\$34,000
<i>Summary for 'Category' = Erosion Control (2 detail records)</i>								
Sum	\$131,400						\$19,710	\$111,690

Flood and Storm Drainage

McKamy Swale from Mapleshade Ln to Villa Rd	\$1,309,800	\$1,309,800						
<i>Summary for 'Category' = Flood and Storm Drainage (1 detail record)</i>								
Sum	\$1,309,800	\$1,309,800						
<i>Summary for 'Proposition' = Flood Protection and Storm Drainage (3 detail records)</i>								
Sum	\$1,441,200	\$1,309,800					\$19,710	\$111,690

Street and Transportation

Alley Reconstruction

Country Brook Dr (4204-4328) A10502	\$270,300	\$40,545			\$229,755
Clearhaven Dr (7206-7246) And Alto Caro Dr (7249-7279) A9160	\$125,100	\$18,765			\$106,335
Claren Ct (7114-7122) And Judi Ct (7104-7112) A10634	\$162,500	\$24,375			\$138,125
Chattington Dr (7507-7625) And Woodstone Ln (7524-7624) A9309	\$185,300	\$27,795			\$157,505
Chattington Dr (7403-7439) And Meandering Pl (15105-15115) A9290	\$180,300	\$27,045			\$153,255
Blue Mesa Dr (6834-6922) And Hillcrest Rd (17702-17726) A10597	\$182,300	\$27,345			\$154,955

<i>CD</i>	<i>Proposition</i>	<i>Category</i>	<i>Location</i>	<i>FYTotal</i>	<i>FY2013</i>	<i>FY2014</i>	<i>FY2015</i>	<i>FY2016</i>	<i>FY2017</i>
<i>Council District 12</i>									
			Daybreak Dr (2303-2715) And Harbinger Ln (2304-2612) A10351	\$429,800	\$64,470		\$365,330		
			Arapaho Rd (7630-7630) And El Padre (7707-7707) A9260	\$188,800	\$28,320		\$160,480		
			Amberwood Rd (16101-16239) And Wickerwood Dr (6401-6535) A9726	\$347,000	\$52,050		\$294,950		
			Alto Caro Dr (7305-7447) And Clearhaven Dr (7306-7446) A9167	\$260,200	\$39,030		\$221,170		
			Caulfield Dr (6701-6805) And Spanky Branch Ct (6904-7000) A9551	\$203,500	\$30,525		\$172,975		
			Misty Meadow Dr (3403-3523) And Meadowchase Way (17903-17923) A11583	\$230,100	\$34,515		\$195,585		
			Kingsridge Dr (2307-2627) And Silverthorne Dr (2304-2516) A10345	\$421,900	\$63,285		\$358,615		
			La Avenida Dr (7505-7607) And Meandering Way A9187	\$183,800	\$27,570		\$156,230		
			La Avenida Dr (7607-7747) And La Bolsa Dr (7616-7748) A9186	\$322,500	\$48,375		\$274,125		
			La Cabeza (7707-7765) And Scotia (7702-7718) A9118	\$176,800	\$26,520		\$150,280		
			La Cosa Dr (7604-7760) And Chalkstone Dr (7605-7747) A9262	\$423,900	\$63,585		\$360,315		
			La Cosa Dr (7705-7761) And El Padre Ln (7706-7746) A9258	\$156,000	\$23,400		\$132,600		
			La Cosa Dr (7804-7960) And Fallmeadow Ln (7931-7997) A9265	\$296,800	\$44,520		\$252,280		
			La Manga Dr (7707-7765) And La Cabeza Dr (7708-7764) A9119	\$178,500	\$26,775		\$151,725		
			Indian Springs Rd (7609-7679) And Tophill Ln (7614-7652) A9319	\$177,000	\$26,550		\$150,450		
			Leameadow Dr (7008-7028) And Knollview Dr (14944-14956) A9298	\$149,800	\$22,470		\$127,330		

<i>CD</i>	<i>Proposition</i>	<i>Category</i>	<i>Location</i>	<i>FYTotal</i>	<i>FY2013</i>	<i>FY2014</i>	<i>FY2015</i>	<i>FY2016</i>	<i>FY2017</i>
<i>Council District 12</i>									
			Spring Creek Rd (15408-15432) And Fallmeadow Ln (7927-7931) A9266	\$86,500	\$12,975		\$73,525		
			Park Grove Ln (18627-18851) And Kirkmeadow Ln (4007-4131) A10466	\$302,500	\$45,375		\$257,125		
			Roundrock Rd (7707-7823) And Briaridge Rd (7708-7820) A9272	\$182,000	\$27,300		\$154,700		
			Rustic Valley Dr (7238-7420) And Echo Bluff Dr (7104-7132) A9142	\$409,600	\$61,440		\$348,160		
			Seedling Ln (2304-2524) And Old Mill Rd (2311-2519) A10364	\$353,100	\$52,965		\$300,135		
			Spring Creek Rd (14906-15022) And Hillfawn Cir (7906-7916) A9248	\$147,600	\$22,140		\$125,460		
			Timber Creek Ln (6001-6037) And Gentle Knoll Ln (6002-6030) A9601	\$153,600	\$23,040		\$130,560		
			Townsley Ct (17203-17215) A9648	\$108,000	\$16,200		\$91,800		
			Tree Shadow Trl (5902-5942) And Flintshire Ct (5901-5923) A10769	\$244,900	\$36,735		\$208,165		
			Lacehaven Dr (14907-14957) And Knollview Dr (14908-14944) A9299	\$249,500	\$37,425		\$212,075		
			Hillcrest Rd (17920-18014) And Bremerton Dr (7003-7011) A10597	\$133,000	\$19,950		\$113,050		
			Gray Wolf Trl (6203-6251) And Bentwood Trl (6211-6247) A10666	\$169,600	\$25,440		\$144,160		
			Harbinger Ln (2303-2423) And Kingsridge Dr (2308-2424) A10354	\$215,100	\$32,265		\$182,835		
			Fallmeadow Ln (7612-7668) And Meandering Way (14800-14800) A9273	\$220,400	\$33,060		\$187,340		
			El Padre Ln (7707-7747) And El Santo Ln (7706-7746) A9257	\$156,400	\$23,460		\$132,940		
			Harbinger Ln (2503-2623) And Kingsridge Dr (2504-2624) A10349	\$214,700	\$32,205		\$182,495		
			Duffield Dr (6321-6415) And Earthwind Dr (17134-17222) A9589	\$136,500	\$20,475		\$116,025		

<i>CD</i>	<i>Proposition</i>	<i>Category</i>	<i>Location</i>	<i>FYTotal</i>	<i>FY2013</i>	<i>FY2014</i>	<i>FY2015</i>	<i>FY2016</i>	<i>FY2017</i>
<i>Council District 12</i>									
			Earthwind Dr (17101-17409) And Campbell Rd (6001-6101) A9582	\$508,200	\$76,230		\$431,970		
			Hilton Head Dr (5310-5420) And Harbor Town Dr (5305-5323) A18125	\$181,200	\$27,180		\$154,020		
			Tophill Ln (7405-7449) And Lynworth Dr (7408-7444) A9302	\$165,800	\$24,870		\$140,930		
			Hilton Head Dr (5211-5315) And River Hill Cir (4708-4724) A10672	\$159,900	\$23,985		\$135,915		
			Hillcrest Rd (17726-17820) And Blue Mesa Dr (6926-6930) A10597	\$129,500	\$19,425		\$110,075		
			Hillfawn Cir (7905-7947) And Woodstone Ln (7938-7992) A9246	\$135,200	\$20,280		\$114,920		
			<i>Summary for 'Category' = Alley Reconstruction (45 detail records)</i>						
			Sum	\$10,015,000	\$1,502,250		\$8,512,750		
<i>Complete Street</i>									
			Meadowcreek Drive Arapaho to Campbell - pedestrian and traffic calming improvements	\$271,800	\$40,770	\$231,030			
			<i>Summary for 'Category' = Complete Street (1 detail record)</i>						
			Sum	\$271,800	\$40,770	\$231,030			
<i>Intergovernmental Partnership</i>									
			Keller Springs / Preston / Westgrove	\$306,100		\$306,100			
			<i>Summary for 'Category' = Intergovernmental Partnership (1 detail record)</i>						
			Sum	\$306,100		\$306,100			
<i>Sidewalk Improvements</i>									
			Sidewalk Improvements District 12	\$7,800		\$7,800			
			<i>Summary for 'Category' = Sidewalk Improvements (1 detail record)</i>						
			Sum	\$7,800		\$7,800			

<i>CD</i>	<i>Proposition</i>	<i>Category</i>	<i>Location</i>	<i>FYTotal</i>	<i>FY2013</i>	<i>FY2014</i>	<i>FY2015</i>	<i>FY2016</i>	<i>FY2017</i>
<i>Council District</i>		<i>12</i>							
	<i>Street Reconstruction - Thoroughfare</i>								
			Hillcrest Rd from Wester Way to McKamy	\$615,800		\$92,370		\$523,430	
			<i>Summary for 'Category' = Street Reconstruction - Thoroughfare (1 detail record)</i>						
			Sum	\$615,800		\$92,370		\$523,430	
	<i>Street Resurfacing</i>								
			Gretchen Ln from Davenport Rd to Peppy Pl	\$225,900		\$225,900			
			Squaw Valley from End of Pavement to Crested Butte Dr	\$124,700					\$124,700
			Coolglen Dr from Meadowcreek Dr to end of pavement	\$105,700				\$105,700	
			Camille Ave from Davenport to Cansler	\$175,500				\$175,500	
			Windy Ridge Dr from Meadowcreek Dr to Arbor Downs Dr	\$137,000					\$137,000
			Earlport Dr from Roundrock Rd to Winterwood Ln	\$73,400		\$73,400			
			Tomlinson St from Graystone Dr to Meandering Way	\$98,200					\$98,200
			La Cabeza Dr from Spring Creek Rd To Querida Ln	\$122,900					\$122,900
			Leavalley Dr from Hillwood Ln to Winterwood Ln	\$53,200					\$53,200
			Selecman Dr from La Sobrina Dr to Foxworth Dr	\$37,000					\$37,000
			Misty Trl from Golden Creek Rd to Warm Mist Ln	\$85,300				\$85,300	
			<i>Summary for 'Category' = Street Resurfacing (11 detail records)</i>						
			Sum	\$1,238,800		\$299,300		\$366,500	\$573,000
	<i>Trails</i>								
			Trail from Timberglen Park to Barry Barker Park	\$2,081,700		\$312,255		\$1,769,445	
			<i>Summary for 'Category' = Trails (1 detail record)</i>						
			Sum	\$2,081,700		\$312,255		\$1,769,445	

<i>CD</i>	<i>Proposition</i>	<i>Category</i>	<i>Location</i>	<i>FYTotal</i>	<i>FY2013</i>	<i>FY2014</i>	<i>FY2015</i>	<i>FY2016</i>	<i>FY2017</i>
<i>Council District</i>		<i>12</i>							
<i>Summary for 'Proposition' = Street and Transportation (61 detail records)</i>									
Sum				\$14,537,000	\$1,543,020	\$1,248,855	\$8,512,750	\$2,659,375	\$573,000
<i>Summary for 'CD' = 12 (64 detail records)</i>									
Sum				\$15,978,200	\$2,852,820	\$1,248,855	\$8,512,750	\$2,679,085	\$684,690

<i>CD</i>	<i>Proposition</i>	<i>Category</i>	<i>Location</i>	<i>FYTotal</i>	<i>FY2013</i>	<i>FY2014</i>	<i>FY2015</i>	<i>FY2016</i>	<i>FY2017</i>
<i>Council District</i>		<i>13</i>							

Street and Transportation

Alley Petition

Alley between Hurley Way and Lenel Place from Williamsburg Road to "T" alley south of Walnut Hill Lane	\$202,000	\$30,300	\$171,700
--	-----------	----------	-----------

Summary for 'Category' = Alley Petition (1 detail record)

Sum	\$202,000	\$30,300	\$171,700
------------	------------------	-----------------	------------------

Alley Reconstruction

Del Roy Dr (5209-5439) And Preston Haven Dr (5208-5438) A8974	\$296,400	\$44,460	\$251,940
Deep Valley Dr (3920-3980) And Clear Cove Ln (3911-3951) A5561	\$318,700	\$47,805	\$270,895
Cromwell Dr (12112-12132) And High Mesa Dr (3404-3416) A5324	\$81,700	\$12,255	\$69,445
Lennox Ln (10545-10615) And Isabella Ln (4611-4611) A3111	\$134,300	\$20,145	\$114,155
Chapel Downs Dr (3108-3256) And Timberview Rd (3111-3253) A5691	\$349,000	\$52,350	\$296,650
Brookview Dr (4400-4538) And Gloster Rd (4407-4533) A3086	\$295,500	\$44,325	\$251,175
Boca Bay Dr (4109-4263) And Shady Bend Dr (4110-4264) A5528	\$376,600	\$56,490	\$320,110
Caruth Blvd (7403-7543) And Colgate Ave (7402-7542) A3880	\$241,000	\$36,150	\$204,850
Beauty Ln (10804-11030) And Royal Ln (3461-3461) A5447	\$317,200	\$47,580	\$269,620
Catamore Ln (3117-3185) And Flowerdale Ln (3112-3162) A11081	\$195,800	\$29,370	\$166,430
Cedarbrush Dr (3809-3951) And Goodfellow Dr (3810-3948) A5588	\$305,800	\$45,870	\$259,930

<i>CD</i>	<i>Proposition</i>	<i>Category</i>	<i>Location</i>	<i>FYTotal</i>	<i>FY2013</i>	<i>FY2014</i>	<i>FY2015</i>	<i>FY2016</i>	<i>FY2017</i>
<i>Council District 13</i>									
			Allencrest Ln (4807-4931) And Nashwood Ln (4808-4918) A5244	\$274,000	\$41,100		\$232,900		
			Allencrest Ln (4608-4732) And Forest Ln (4609-4719) A5246	\$209,400	\$31,410		\$177,990		
			Coral Gables Dr (3608-3660) And Pallos Verdas Dr (3627-3675) A5411	\$186,000	\$27,900		\$158,100		
			Cedar Bend Dr (12317-12417) A5499	\$191,900	\$28,785		\$163,115		
			<i>Summary for 'Category' = Alley Reconstruction (15 detail records)</i>						
			Sum	\$3,773,300	\$565,995		\$3,207,305		
<i>Street Reconstruction - Local</i>									
			Aberdeen Ave From Preston Rd To Tulane St	\$909,100		\$136,365		\$772,735	
			Weeburn from Marsh to Mid Pines	\$752,100		\$112,815		\$639,285	
			<i>Summary for 'Category' = Street Reconstruction - Local (2 detail records)</i>						
			Sum	\$1,661,200		\$249,180		\$1,412,020	
<i>Street Resurfacing</i>									
			Silverton from Dennis to Caraway	\$124,600					\$124,600
			Shady Bend from Midway to Haydale	\$205,900					\$205,900
			Dale Crest from Walnut Hill to Citation	\$70,100		\$70,100			
			Park Lane from Thackery St to Hillcrest Rd	\$171,400			\$171,400		
			Regent from Webb Chapel to Countess	\$239,500			\$239,500		
			Park Lane from Tulane St to Edgemere Rd	\$162,600			\$162,600		
			Caraway from Latham to Northaven	\$304,000			\$304,000		
			Marquis from Norcross to Royal	\$227,600					\$227,600
			Pensive from Walnut Hill to Merrell	\$327,900			\$327,900		
			Edgemere from Park Lane to Prestonshire	\$141,700		\$141,700			

<i>CD</i>	<i>Proposition</i>	<i>Category</i>	<i>Location</i>	<i>FYTotal</i>	<i>FY2013</i>	<i>FY2014</i>	<i>FY2015</i>	<i>FY2016</i>	<i>FY2017</i>
<i>Council District 13</i>									
			Countess from Camelot to end of pavement north of Regent	\$381,200		\$381,200			
			Royal Club from Merrell to Regent	\$270,400				\$270,400	
			Duchess from Royal Club to Marquis	\$181,100		\$181,100			
			Royal Ln from Marsh Lane to Cox Lane	\$391,100					\$391,100
			Prestonshire from Tulane to Edgemere	\$162,800				\$162,800	
			Channel from Royal to Talisman	\$343,700				\$343,700	
			Stefani Dr from Thackery St to Hillcrest Rd	\$128,500					\$128,500
			Thackery from Waggoner to Royal	\$358,800					\$358,800
			Timberview from Pensive to Webb Chapel	\$294,800					\$294,800
			Tulane St from Prestonshire Ln to Lupton Dr	\$51,100					\$51,100
			Walnut Hill Ln from 500' west of Dale Crest Dr to Webb Chapel	\$345,000					\$345,000
			Harwich from Walnut Hill to Timberview	\$121,700			\$121,700		
			Wonderland Trl from Northaven Rd to Peter Pan Dr	\$269,200					\$269,200
			Earlshire from Regent to Royal	\$44,100		\$44,100			
			Forest from High Meadow to Josey	\$1,277,900		\$1,277,900			
			Norcross from Webb Chapel to Cromwell	\$294,500				\$294,500	
			<i>Summary for 'Category' = Street Resurfacing (26 detail records)</i>						
			Sum	\$6,891,200		\$2,096,100	\$121,700	\$2,276,800	\$2,396,600
<i>Target Neighborhood</i>									
			Holly Hill from Phoenix to Pineland	\$857,200	\$128,580		\$728,620		
			Phoenix from Fair Oaks to Holly Hill	\$857,200	\$128,580		\$728,620		
			<i>Summary for 'Category' = Target Neighborhood (2 detail records)</i>						
			Sum	\$1,714,400	\$257,160		\$1,457,240		

<i>CD</i>	<i>Proposition</i>	<i>Category</i>	<i>Location</i>	<i>FYTotal</i>	<i>FY2013</i>	<i>FY2014</i>	<i>FY2015</i>	<i>FY2016</i>	<i>FY2017</i>
<i>Council District</i>		<i>14</i>							

Flood Protection and Storm Drainage

Erosion Control

Turtle Creek Greenbelt Site 1 - bike trail	\$222,800						\$33,420	\$189,380	
<i>Summary for 'Category' = Erosion Control (1 detail record)</i>									
Sum	\$222,800						\$33,420	\$189,380	
<i>Summary for 'Proposition' = Flood Protection and Storm Drainage (1 detail record)</i>									
Sum	\$222,800						\$33,420	\$189,380	

Street and Transportation

Alley Petition

Alley between Hibernia Street and McKinney Avenue from Routh Street to Boll Street	\$94,300	\$14,145				\$80,155			
Alley between Hibernia Street and State Street from Boll Street to Worthington Street	\$91,800	\$13,770				\$78,030			
Alley between State Street and Thomas Avenue from Routh Street to Boll Street	\$91,800	\$13,770				\$78,030			
Capps Dr & Rexford Dr from. Lemmon Ave parallel to Glencrest Ln	\$146,900	\$22,035				\$124,865			
<i>Summary for 'Category' = Alley Petition (4 detail records)</i>									
Sum	\$424,800	\$63,720				\$361,080			

Complete Street

Knox from Katy Trail to US 75	\$734,700					\$110,205		\$624,495
Cedar Springs Ave from Douglas to Oak Lawn	\$1,154,100					\$173,115		\$980,985
Greenville from Belmont to Bell and from Alta to Ross	\$3,673,500	\$551,025				\$3,122,475		
Greenville Ave Retail Areas	\$820,400					\$123,060		\$697,340

<i>CD</i>	<i>Proposition</i>	<i>Category</i>	<i>Location</i>	<i>FYTotal</i>	<i>FY2013</i>	<i>FY2014</i>	<i>FY2015</i>	<i>FY2016</i>	<i>FY2017</i>
<i>Council District</i>		<i>14</i>							
				<i>Summary for 'Category' = Complete Street (4 detail records)</i>					
			Sum	\$6,382,700	\$551,025		\$3,528,855		\$2,302,820
			<i>Street Reconstruction - Thoroughfare</i>						
			Munger Blvd (N) from Rieger to Tremont	\$1,135,500		\$170,325		\$965,175	
				<i>Summary for 'Category' = Street Reconstruction - Thoroughfare (1 detail record)</i>					
			Sum	\$1,135,500		\$170,325		\$965,175	
			<i>Street Resurfacing</i>						
			Cole from Harvard to Lee	\$664,700	\$664,700				
			McMillan from Willis to Monticello	\$375,600				\$375,600	
			Carlisle St from Sneed St to N. Hall St	\$217,600				\$217,600	
			Bowen St from McKinney Ave to Turtle Creek	\$260,000		\$260,000			
			Main St from Harwood to Lamar	\$730,200				\$730,200	
			Avondale from Throckmorton to Oak Lawn Ave	\$106,900	\$106,900				
			Abrams Rd from Mockingbird Ln to Lange Cir	\$262,300		\$262,300			
			Ross Ave from N. Field St to Croquette St	\$441,000				\$441,000	
			Lemmon Ave from W. University Blvd to Bluffview Blvd	\$407,700			\$407,700		
			Gaston Ave from Loving to 200' west of Brendenwood	\$307,300	\$307,300				
			Haskell Ave from Lemmon to Ross	\$395,500			\$395,500		
			Mockingbird Ln (W) from Maple to Cedar Springs	\$230,300	\$230,300				
			McKinney Ave from Hall to Oak Grove	\$246,800				\$246,800	
				<i>Summary for 'Category' = Street Resurfacing (13 detail records)</i>					
			Sum	\$4,645,900	\$1,309,200	\$522,300	\$803,200	\$2,011,200	

<i>CD</i>	<i>Proposition</i>	<i>Category</i>	<i>Location</i>	<i>FYTotal</i>	<i>FY2013</i>	<i>FY2014</i>	<i>FY2015</i>	<i>FY2016</i>	<i>FY2017</i>
<i>Council District</i>		<i>14</i>							
<i>Summary for 'Proposition' = Street and Transportation (22 detail records)</i>									
Sum				\$12,588,900	\$1,923,945	\$692,625	\$4,693,135	\$2,976,375	\$2,302,820
<i>Summary for 'CD' = 14 (23 detail records)</i>									
Sum				\$12,811,700	\$1,923,945	\$692,625	\$4,693,135	\$3,009,795	\$2,492,200
Grand Total				\$642,000,000	\$36,788,625	\$151,741,525	\$291,772,030	\$101,052,210	\$60,645,610

Memorandum




DATE: January 11, 2013

TO: The Honorable Mayor and Members of the City Council

SUBJECT: **Dallas/Fort Worth International Airport Board Nomination/Appointment Process**

The Dallas/Fort Worth International Airport Board Nomination/Appointment Process materials will be provided to you by the City Secretary's Office.



A.C. Gonzalez
First Assistant City Manger

CC: Mary K. Suhm, City Manager
Rosa Rios, City Secretary
Thomas P. Perkins, Jr., City Attorney
Craig D. Kinton, City Auditor
Daniel Solis, Administrative Municipal Judge
Ryan S. Evans, Assistant City Manager
Jill A. Jordan, P.E., Assistant City Manager
Forest E. Turner, Assistant City Manager
Joey Zapata, Assistant City Manager
Jeanne Chipperfield, Chief Financial Officer
Frank Libro, Public Information Office
Stephanie Cooper, Assistant to the City Manager Mayor/City Council